

NONCODED CONNECTORS—KS-19087 THROUGH KS-19088

DESCRIPTION

1. GENERAL

1.01 This section lists and illustrates noncoded connectors within the part or type number range of KS-19087 through KS-19088, used for the maintenance and operation of equipment in central offices.

1.02 Revision arrows are used to emphasize significant changes. The reasons for reissue are to revise Table A and Table B to include additional mating connectors.

2. DESCRIPTION OF CONNECTORS

2.01 *KS-19087-Type:* The KS-19087-type are subminiature, female connectors. They consist of molded, rectangular blocks of insulating material equipped with gold-plated, socket-type contacts assembled in polarized, metal shells. The shells are provided with two mounting holes in the flanges. These connectors may be procured with hoods and locking mechanisms for mating. For more information, see Table A.

♦TABLE A♦

KS-19087 AND MATING KS-19088 CONNECTORS

KS-19087 LIST NO.	FIG NO.	NO. OF TERMINALS	MATES WITH CONNECTOR KS-19088 LIST NO.
1	1	15	1,15
2	1	25	2,14,21,22,24,39
3	1	37	3,41
4	1	9	4,5,23,36
5	2	9	4,5,23,36
6	1	25	2,14,21,22,24,39
7	1	9	4,5,23,36
8	1	15	1,15
9	3	9	6,37
10	3	15	7
11	4	25	8
12	4	37	9
13	5	15	10
14	5	9	11
15	6	9	12
16	1	50	13
17	1	25	2,14,21,22,24,39
18	7	15	1,15
19	8	25	17,25

NOTICE

Not for use or disclosure outside the
Bell System except under written agreement

♦TABLE A (Contd)♦

KS-19087 AND MATING KS-19088 CONNECTORS

KS-19087 LIST NO.	FIG NO.	NO. OF TERMINALS	MATES WITH CONNECTOR KS-19088 LIST NO.
20	6	25	16
21	6	9	6,37
22	8	9	19
23	6	15	7
24	9	9	6,37
25	6	9	6,37
26	10	37	20
27	8	15	18
28	9	15	7
29	2	15	1,15
30	11	25	16
31	12	15	1,15
32	12	9	4,5,23,36
33	13	25	2,14,21,22,24
34	14	25	16,25
35	15	25	—
36	14	15	7
37	1	25	2,14,21,22,24
38	16	50	26
39	1	15	28,29
40	1	9	30
41	1	50	27, 31
42	1	15	28,29
43	12	50	27, 31
44	1	25	32
45	2	9	30
46	8	37	33
47	1	37	34
48	1	37	35
49	15	9	38
50	1	25	39
51	1	9	40
52	1	37	3,41
53	6	37	20
54	6	50	42



Fig. 1—KS-19087, L1, L2, L3, L4, L6, L7, L8, L16, L17, L37, L39, L40, L41, L42, L44, L47, L48, L50, L51, or L52 Connector

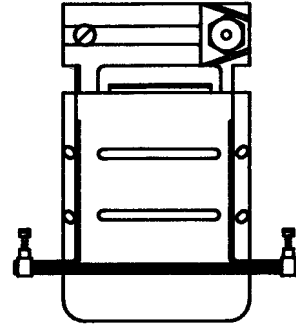


Fig. 5—KS-19087, L13 or L14 Connector

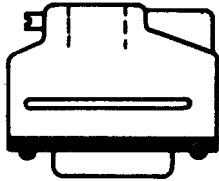


Fig. 2—KS-19087, L5, L29, or L45 Connector

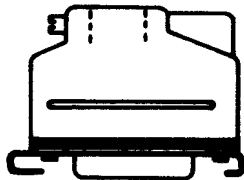


Fig. 3—KS-19087, L9 or L10 Connector

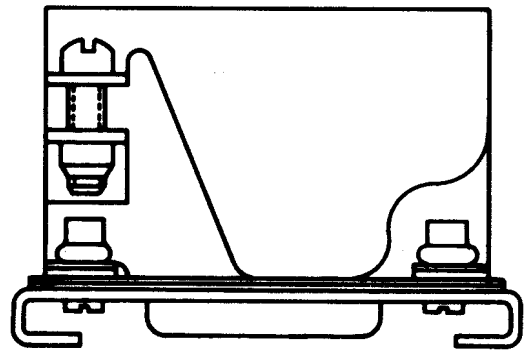


Fig. 6—KS-19087, L15, L20, L21, L23, L25, L53, or L54 Connector

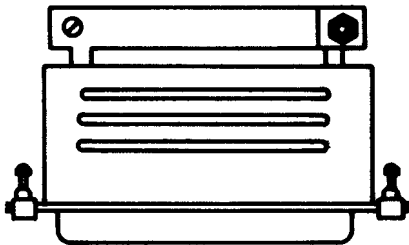


Fig. 4—KS-19087, L11 or L12 Connector

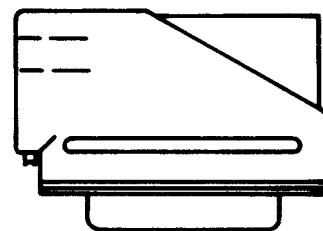


Fig. 7—KS-19087, L18, Connector



Fig. 8—KS-19087, L19, L22, L27, or L46 Connector

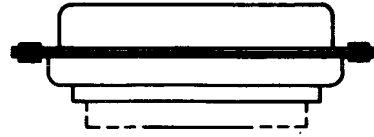


Fig. 12—KS-19087, L31, L32, or L43 Connector

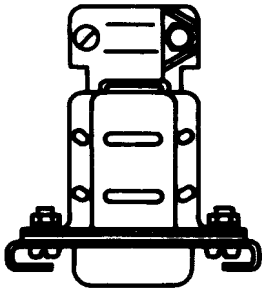


Fig. 9—KS-19087, L24 or L28 Connector

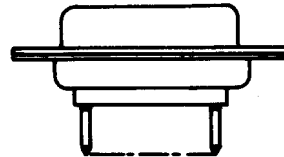


Fig. 13—KS-19087, L33, Connector

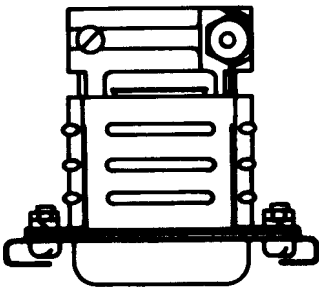


Fig. 10—KS-19087, L26, Connector

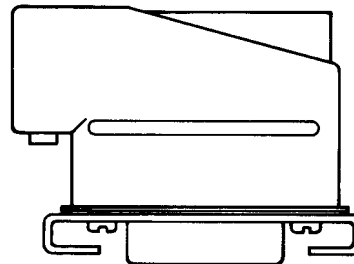


Fig. 14—KS-19087, L34 or L36 Connector

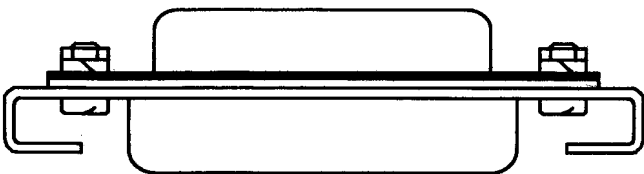


Fig. 11—KS-19087, L30, Connector



Fig. 15—KS-19087, L35 or L49 Connector

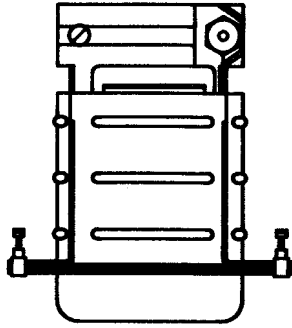


Fig. 16—KS-19087, L38, Connector

2.02 KS-19088-Type: The KS-19088-type are subminiature, male connectors consisting of molded, rectangular blocks of insulating material equipped with gold-plated, pin-type contacts assembled in polarized, metal shells. The flanges of the shells are provided with two mounting holes. These connectors may be procured, equipped with locking mechanisms for mating. For more information, see Table B.

♦TABLE B♦

KS-19088 AND MATING KS-19087 CONNECTORS

KS-19088 LIST NO.	FIG NO.	NO. OF TERMINALS	MATES WITH CONNECTOR KS-19087 LIST NO.
1	17	15	1,8,18,29,31
2	17	25	2,6,17,33,37
3	17	37	3,52
4	17	9	4,5,7,32
5	18	9	4,5,7,32
6	19	9	9,21,24,25
7	19	15	10,23,28,36
8	20	25	11
9	20	37	12
10	20	15	13
11	20	9	14
12	19	9	15
13	17	50	16
14	21	25	2,6,17,33,37
15	22	15	1,8,18,29,31
16	19	25	20,30,34
17	23	25	19
18	24	15	27
19	23	9	22
20	19	37	26,53
21	18	25	2,6,17,33,37
22	17	25	2,6,17,33,37
23	25	9	4,5,7,32
24	17	25	2,6,17,33,37
25	26	25	19,34
26	20	50	38

TABLE B (Contd)

KS-19088 AND MATING KS-19087 CONNECTORS

KS-19088 LIST NO.	FIG NO.	NO. OF TERMINALS	MATES WITH CONNECTOR KS-19087 LIST NO.
27	17	50	41,43
28	17	15	39,42
29	17	15	39,42
30	17	9	40,45
31	17	50	41,43
32	17	25	44
33	19	37	46
34	27	37	47
35	17	37	48
36	17	9	4,5,7,32
37	28	9	9,21,24,25
38	29	9	49
39	17	25	2,6,17,50
40	17	9	51
41	17	37	3,52
42	19	50	54

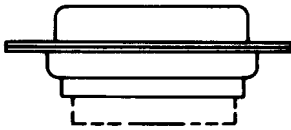


Fig. 17—KS-19088, L1, L2, L3, L4, L13, L22, L24, L27 Through L32, L35, L36, L39, L40, or L41 Connector



Fig. 19—KS-19088, L6, L7, L12, L16, L20, L33, or L42 Connector

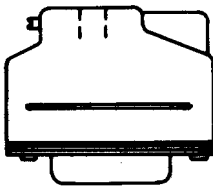


Fig. 18—KS-19088, L5 or L21 Connector

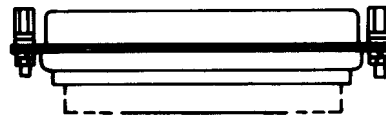


Fig. 20—KS-19088, L8, L9, L10, L11, or L26 Connector

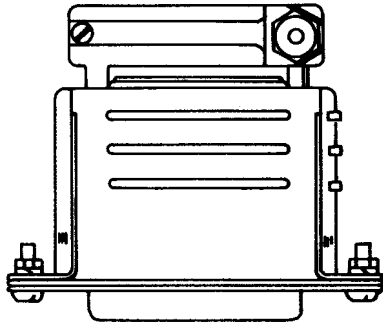


Fig. 21—KS-19088, L14, Connector

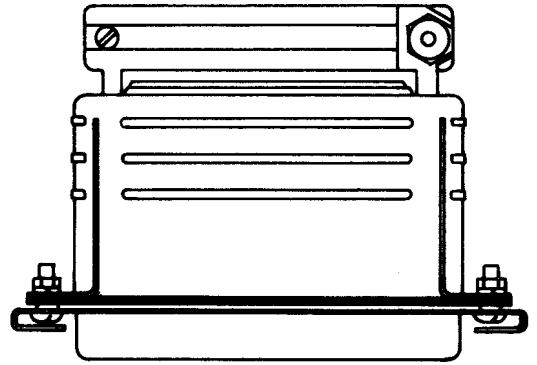


Fig. 24—KS-19088, L18, Connector

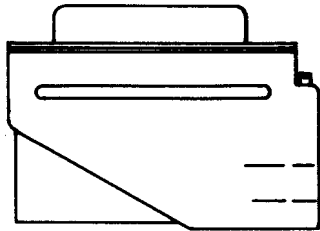


Fig. 22—KS-19088, L15, Connector

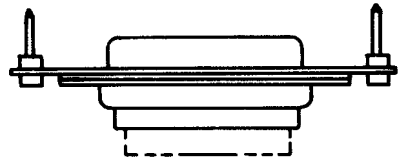


Fig. 25—KS-19088, L23, Connector

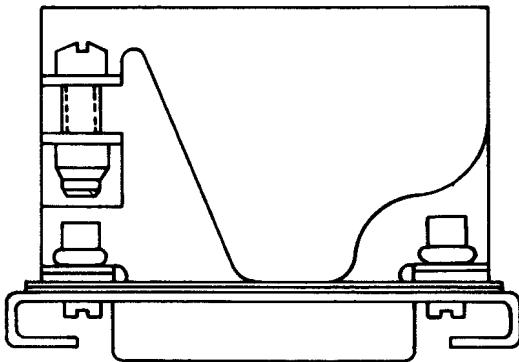


Fig. 23—KS-19088, L17 or L19 Connector

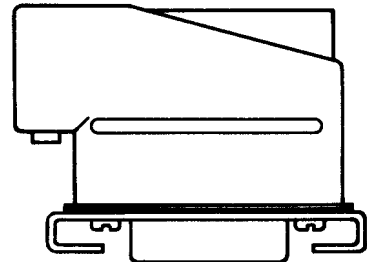


Fig. 26—KS-19088, L25, Connector

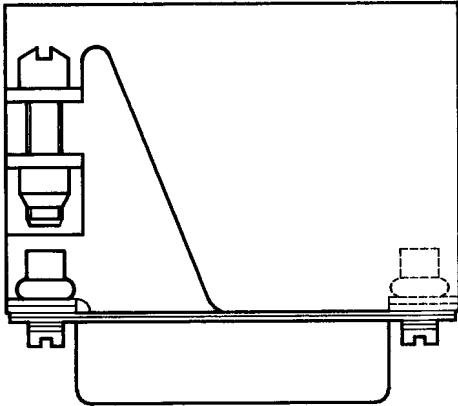


Fig. 27—KS-19088, L34, Connector

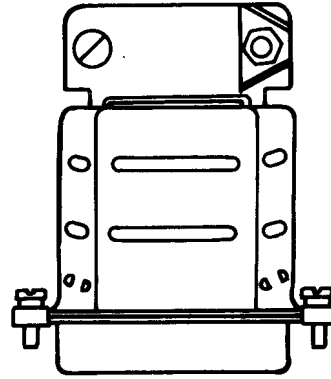


Fig. 29—KS-19088, L38, Connector

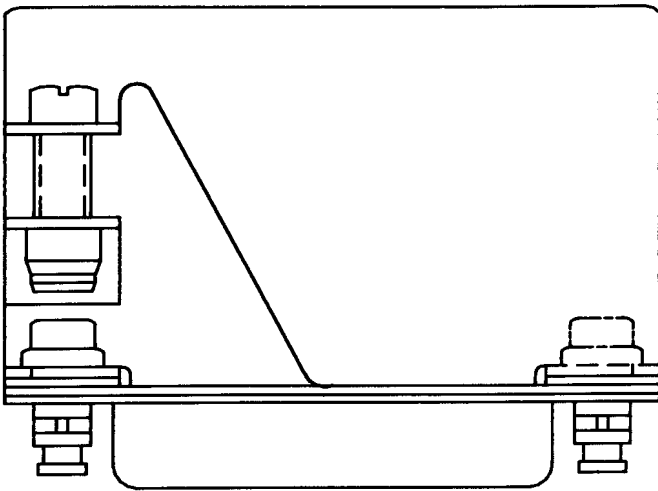


Fig. 28—KS-19088, L37, Connector