

NONCODED CONNECTORS—KS-19331 THROUGH KS-19770

DESCRIPTION

1. GENERAL

1.01 This section lists and illustrates noncoded connectors within the part or type number range of KS-19331 through KS-19770, used for the maintenance and operation of equipment in central offices.

1.02 The information provided in this section was previously shown in Section 032-300-101, Issue 5. The following connectors were added to this section:

- (a) KS-19331, L1
- (b) KS-19341, L1 through L8
- (c) KS-19342, L10
- (d) KS-19401, L1
- (e) KS-19692, L1 and L2
- (f) KS-19758, L1
- (g) KS-19759, L1

2. DESCRIPTION OF CONNECTORS

2.01 *KS-19331, L1*: The KS-19331, L1 (Fig. 1) is a polarized, multicontact, female connector consisting of a rectangular block of insulating material equipped with two mounting tabs, a threaded engaging hole, two guide pin holes, and eighteen pretensioned terminals. The contact end of the terminal is bifurcated, and each prong is provided with a contact button of No. 3 contact metal. The wiring end of the terminal is arranged for solderless wrapped connections suitable for two wraps of 24-gauge wire.

This connector will mate with the 39A apparatus mounting. The connector is used in the coin line monitor and alarm circuit, and in the automatic training of operators for the 100A traffic service position.

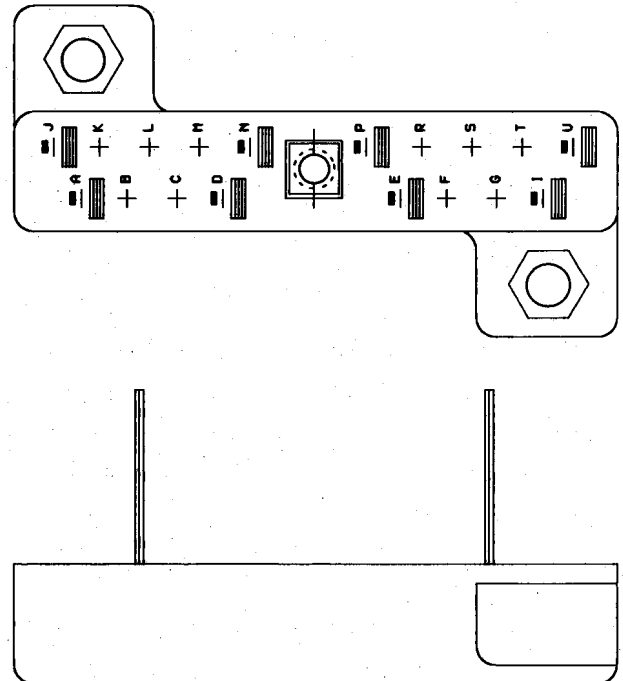


Fig. 1—KS-19333, L1 Connector

2.02 *KS-19341, L1 Through L8*: The KS-19341-type (Fig. 2) are miniature, polarized, multicontact, male connectors consisting of a rectangular block of insulating material equipped with gold-plated, free floating terminals. They mate with the KS-19342 connectors. For more information, see Table A.

NOTICE

Not for use or disclosure outside the
Bell System except under written agreement

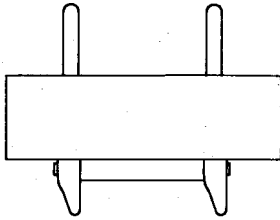


Fig. 2—KS-19341-Type Connector

TABLE A

KS-19341 LIST NO.	NO. OF TERMINALS	MATES WITH CONNECTOR KS-19342 LIST NO.
1	14	1, 5
2	34	2
3	41	3, 6
4	20	7
5	34	8
6	14	4
7	28	9
8	20	10

2.03 **KS-19342, L1 Through L10:** The KS-19342-type (Fig. 3) are miniature, polarized, multicontact, female connectors. For more information, see Table B.

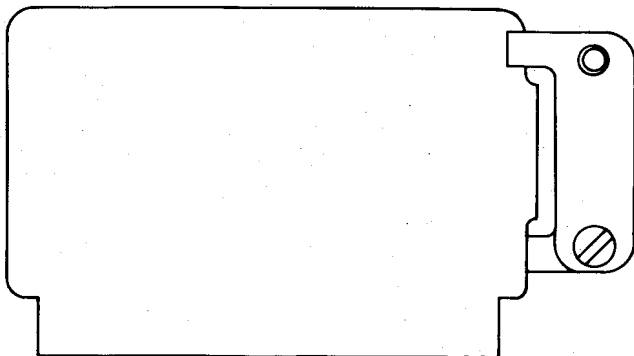


Fig. 3—KS-19342-Type Connector

TABLE B

KS-19342 LIST NO.	NO. OF TERMINALS	MATES WITH CONNECTOR KS-19341 LIST NO.
1	14	1
2	34	2
3	41	3
4	14	6
5	14	1
6	41	3
7	20	4
8	34	5
9	28	7
10	20	8

2.04 **KS-19401, L1 and L2:** The KS-19401, L1 and L2 (Fig. 4) are polarized, coaxial connectors, each consisting of a molded block of insulating material, equipped with 12 miniature, floating, snap-in contacts in two rows of six. The connector is arranged for panel mounting and used on the 301B data set.

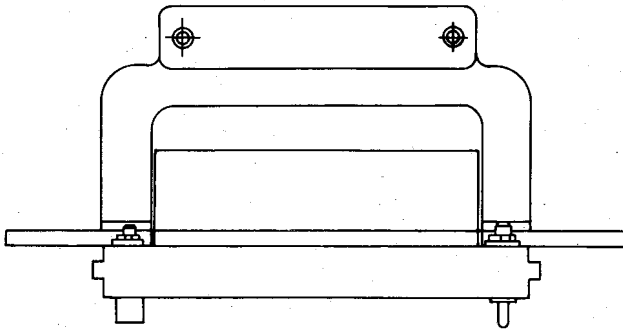


Fig. 4—KS-19401, L2 Connector

- (a) **KS-19401, L1:** The KS-19401, L1 connector mates with the KS-19402, L1 plug.
- (b) **KS-19401, L2:** The KS-19401, L2 connector is equipped with a cable clamp.

2.05 KS-19437, L1: The KS-19437, L1 (Fig. 5) is a polarized, female connector, consisting of a rectangular block of insulating material, equipped with 12 contacts arranged in two rows of six. The wiring end of the contact is arranged for wire-wrapped connections, suitable for two-wraps of 24-gauge wire. This connector will mate with a No. 3A base. The KS-19437, L1 connector is used in 2-inch mounting plates in the No. 5 Crossbar Systems.

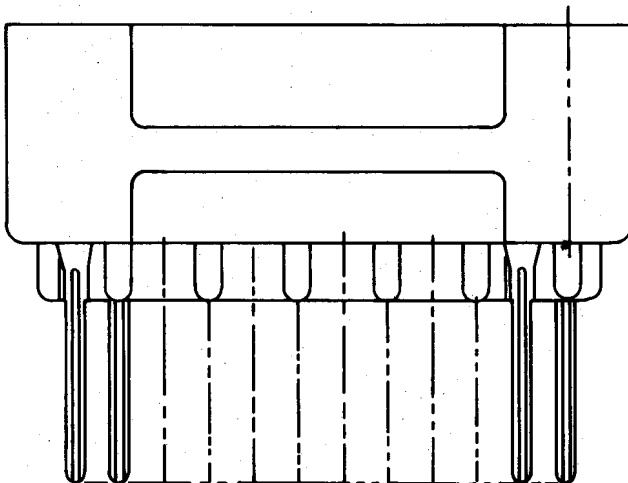


Fig. 5—KS-19437, L1 Connector

2.06 KS-19692, L1 and L2: The KS-19692, L1 and L2 (Fig. 6) are miniature, 50-ohm, coaxial, snap-on, flush-mounted connectors, furnished with a lockwasher and hex nut for mounting. The front end of the connectors is arranged for solder connection, and for mating with a coaxial connector on the 61A detector. The connector is used in the TD-3 Radio System.

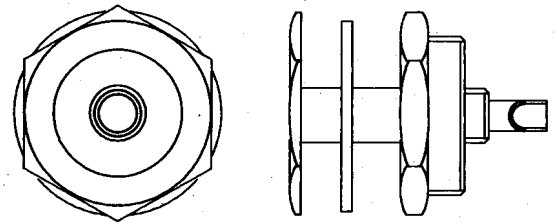


Fig. 6—KS-19692, L1 or L2 Connector

2.07 KS-19758, L1: The KS-19758, L1 (Fig. 7) is a miniature, 50-ohm, coaxial, screw-on, right-angle, panel-mounted connector. This connector will mate with the KS-19759, L1 connector. The connector is used in the TD-3 Radio System.

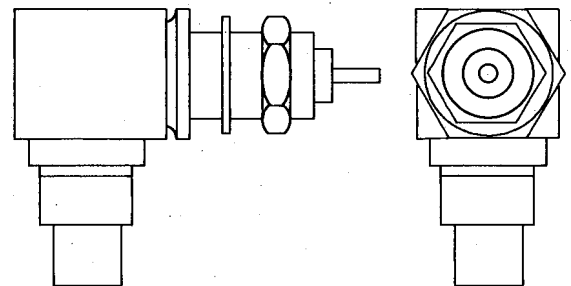


Fig. 7—KS-19758, L1 Connector

2.08 KS-19759, L1: The KS-19759, L1 (Fig. 8) is a miniature, 50-ohm, coaxial, screw-on connector. This connector is arranged for connection to a semirigid coaxial cable. This connector will mate with the KS-19758, L1 connector. The connector is used in the TD-3 Radio System.

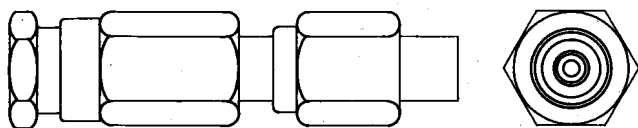


Fig. 8—KS-19759, L1 Connector

2.09 KS-19770-Type: The KS-19770-type are subminiature, multicontact male connectors, consisting of a block of insulating material, equipped with gold-plated, pin-type fixed contacts and arranged to accommodate removable KS-19820 contacts. The block is assembled in a polarized metal shell which is provided with two holes in the flange for panel mounting. Cable termination is provided when the steel is associated with a hood. The wiring end of the fixed contact is arranged for solder connection. For more information, see Table C.

TABLE C

KS-19770 LIST NO.	FIG. NO.	FIXED CONTACTS	REMOVABLE CONTACT POSITIONS	MATES WITH CONNECTOR KS-19771 LIST NO.
1	9	5	4	1
2	10	10	3	2
3	9	15	2	3
4	11	12	5	4
5	11	22	3	5
6	11	17	7	6
7	12	5	2	7
8	13	17	7	8
9	14	15	2	9
10	15	0	8	10
11	15	22	3	11
12	9	12	5	12
13	16	4	1	13
14	12	22	3	14
15	15	10	3	15
16	15	7	6	16
17	15	12	5	17
18	15	17	7	18
19	10	12	5	19
20	17	5	4	20
21	10	15	2	22
22	17	15	2	22
23	10	4	1	23
24	10	3	2	24
25	10	0	3	26
26	10	17	7	28
27	15	15	2	31
28	10	5	4	32
29	10	10	1	33
30	10	25	2	34
31	15	17	7	35
32	11	41	2	36
33	15	17	4	37
*34	10	4	1	39

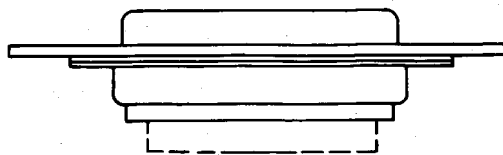


Fig. 9—KS-19770, L1, L3, or L12 Connector

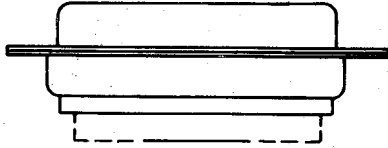


Fig. 10—KS-19770, L2, L19, L21, L23, L24, L25, L26, L28, L29, L30, or L34 Connector

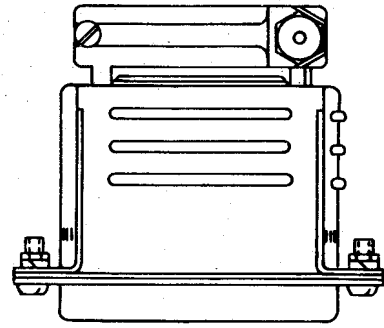


Fig. 14—KS-19770, L9 Connector

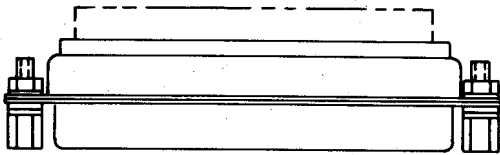


Fig. 11—KS-19770, L4, L5, L6, or L32 Connector

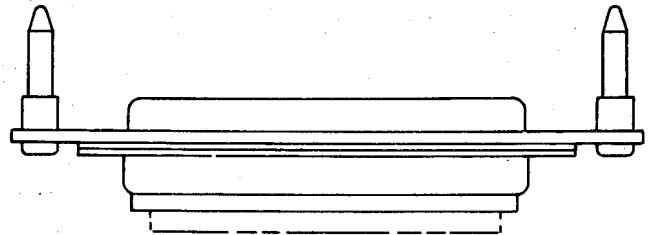


Fig. 15—KS-19770, L10, L11, L15, L16, L17, L18, L27, L31, or L33 Connector

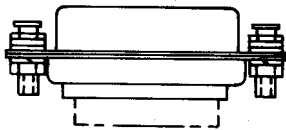


Fig. 12—KS-19770, L7 or L14 Connector

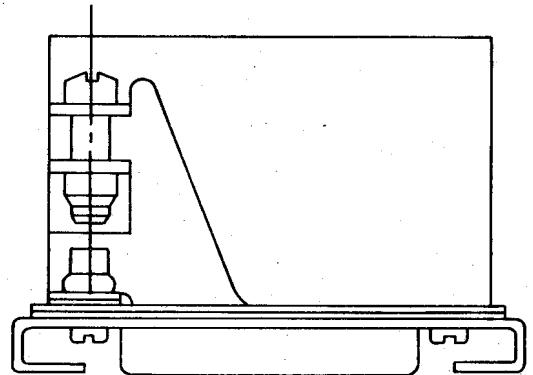


Fig. 16—KS-19770, L13 Connector

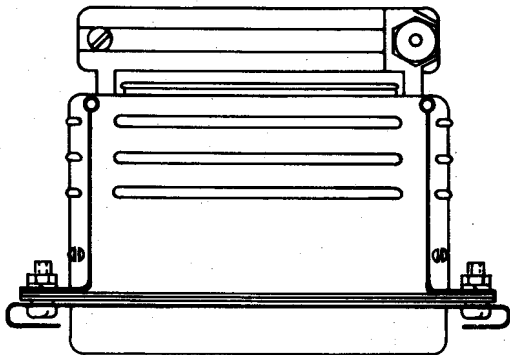


Fig. 13—KS-19770, L8 Connector

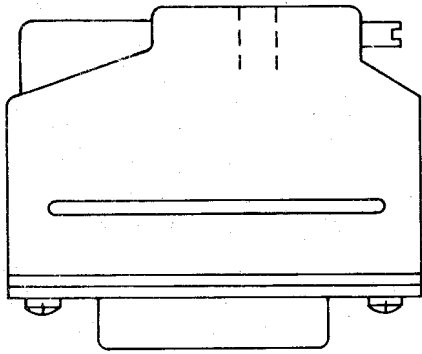


Fig. 17—KS-19770, L20 or L22 Connector