

NONCODED PLUGS—KS-16671 THROUGH KS-16785

DESCRIPTION

TABLE A

LIBRARY
FILE COPY

1. GENERAL

1.01 This section lists and illustrates noncoded plugs within the part or type number range of KS-16671 through KS-16785, used for the maintenance and operation of equipment in central offices.

1.02 The information provided in this section was previously shown in Section 032-302-101, Issue 3. The KS-16785, L14 through L17, and L50 through L55, plugs were added to this section.

2. DESCRIPTION OF PLUGS

2.01 **KS-16671-Type:** The KS-16671-type (Fig. 1) are polarized multicontact plugs equipped with gold-plated, ribbon contacts, assembled in a front-and-back metal shell. The KS-16904, L1, dust cover is available for the KS-16671-type plugs. These plugs mate with the KS-16672-type connectors. For more information, see Table A.



Fig. 1—KS-16671-Type Plug

KS-16671 LIST NO.	CONTACT CAPACITY	CONTACTS USED	PRIMARY USE
1	50	50	D120A and D200A Cords
2	14	14	610 Telephone Set
8	24	24	L-Type
9	36	36	Multiplex Terminals
10	50	50	149B Adapter
11	50	30	584C Panel
13	50	50	584D Panel
14	50	30	584D Panel
15	64	64	Special Test Set
16	50	42	82A Connecting Block
17	50	50	201 Data Set
18	50	50	—
19	50	50	D120A and D200A Cord
20	24	24	D4 Channel Bank
21	50	50	Data Phone
22	50	50	Key Service Units
23	50	50	Key Service Units
24	50	50	D120A and D200A Cord
25	14	14	D3 Dataport DLU
26	24	24	—

NOTICE

Not for use or disclosure outside the Bell System except under written agreement

2.02 KS-16689, L1 Through L20: The KS-16689-type (Fig. 2) are multicontact plugs equipped with gold-plated, ribbon contacts. The KS-16904, L1, dust cover is available for the KS-16689-type plugs. These plugs mate with the KS-16690-type connectors. For more information, see Table B.

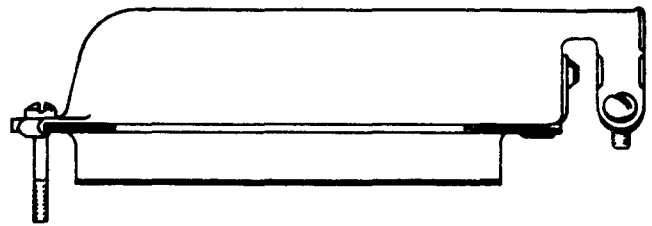


Fig. 2—KS-16689-Type Plug

TABLE B

KS-16689 LIST NO.	CONTACT CAPACITY	CONTACTS USED	PRIMARY USE
1	50	50	D120A and D200A Cords
2	50	50	W50A Cord
3	50	50	233 Key Telephone
4	50	34	D120 and D200 Cords
5	50	40	D120 and D200 Cords
6	50	20	153A Adapter
7	50	50	No. 1 ESS
8	50	8	153A Adapter
9	50	8	153C Adapter
10	50	40	B20A Connector Cable
11	50	42	223 Adapter
12	24	24	Digital Data System
13	36	36	Digital Data System
14	50	50	Digital Data System
15	64	64	Digital Data System
16	64	64	TSPS
17	50	50	TSPS
18	50	50	B25A Cable
19	50	50	SMAS 3B
20	50	50	SMAS 3B

2.03 KS-16785-Type: These are polarized multicontact plugs with gold-plated ribbon contacts assembled in a front-and-back metal shell. For more information, see Table C.

TABLE C

KS-16785 LIST NO.	NO. OF CONTACTS	MATES WITH CONNECTOR KS-16786 LIST NO.	FIG. NO.
1	14	1	3
2	24	2	3
3	36	3	3
4	50	4	3
5	14	1	3
6	24	2	3
7	36	3	3
8	50	4	3
9	14	1	4
10	24	2	5
11	50	4	3
12	36	6	6
13	36	3	3
14	36	—	5
15	36	—	3
16	50	—	3
17	24	—	5
50	50	—	7
51	—	—	8
52	64	54, 55	9
53	—	—	8
54	—	—	7
55	64	54, 55	9

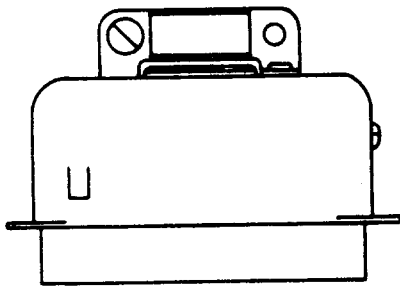


Fig. 3—KS-16785, L1 Through L8, L11, L13, L15, or L16, Plug

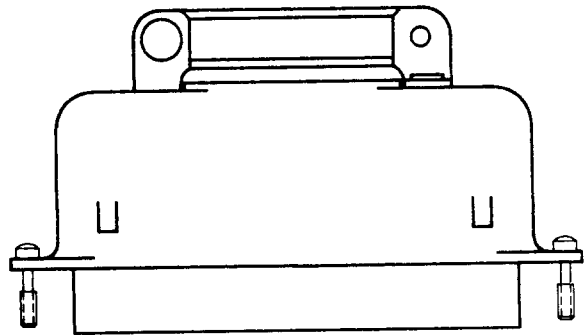


Fig. 7—KS-16785, L50 or L54, Plug

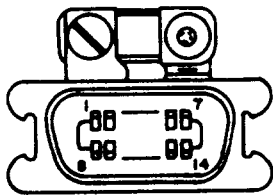


Fig. 4—KS-16785, L9, Plug

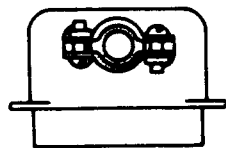


Fig. 5—KS-16785, L10, L14, or L17, Plug

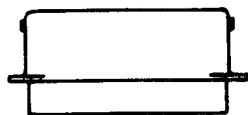


Fig. 6—KS-16785, L12, Plug

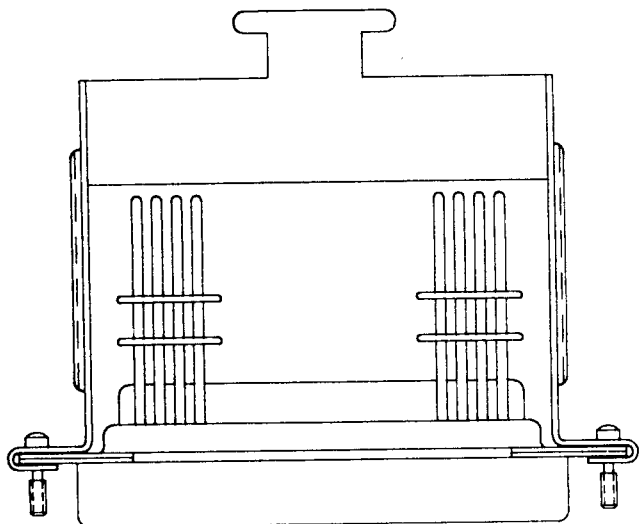


Fig. 8—KS-16785, L51 or L53, Plug

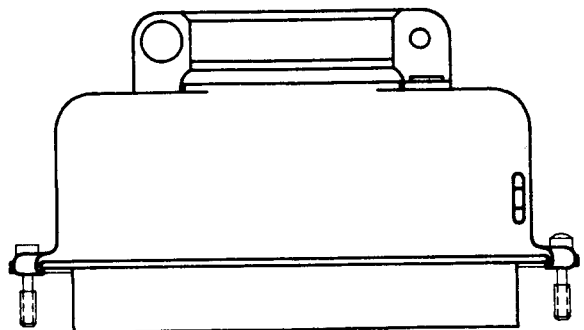


Fig. 9—KS-16785, L52 or L55, Plug