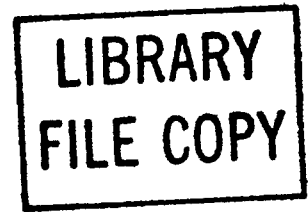


NONCODED PLUGS—KS-19044 THROUGH KS-19183

DESCRIPTION



1. GENERAL

1.01 This section lists and illustrates noncoded plugs within the part or type number range of KS-19044 through KS-19183, used for the maintenance and operation of equipment in central offices.

1.02 The information provided in this section was previously shown in Section 032-302-101, Issue 3. In addition, the KS-19044, L2, and KS-19097-Type were added.

2. DESCRIPTION OF NONCODED PLUGS

2.01 *KS-19044, L1 and L2:* The KS-19044, L1, and L2 (Fig. 1) are polarized, multicontact, male plugs that are equipped with 12 gold-plated, ribbon-type contacts which project at the rear for wire connections. The KS-19044, L1, plug is assembled on a metal bracket for mounting. These plugs mate with the KS-19093, L1, receptacle and are used in the broadband multiplex for plug-in amplifiers.

2.02 *KS-19080-Type:* The KS-19080-type are polarized, multicontact, male plugs equipped with gold-plated terminals which project at the rear for printed wiring board connections.

(a) *KS-19080, L1:* The KS-19080, L1, plug (Fig. 2) has 20 terminals and mates with the KS-19081, L1, connector. This plug is used on the V4 telephone repeater in Common Systems.

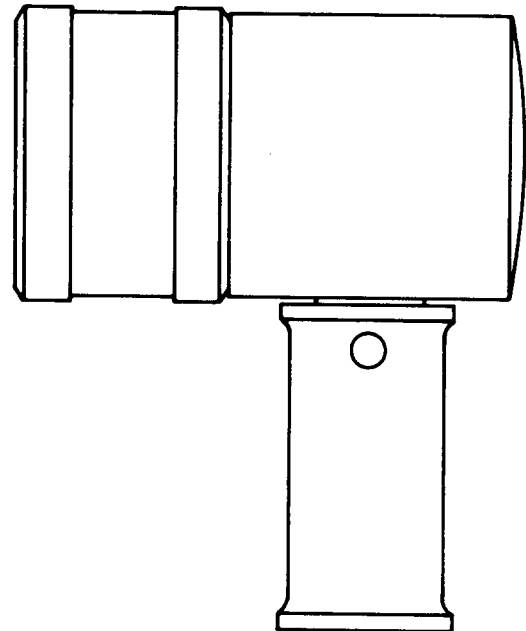


Fig. 1—KS-19044, L1 and L2, Plug

NOTICE

Not for use or disclosure outside the
Bell System except under written agreement

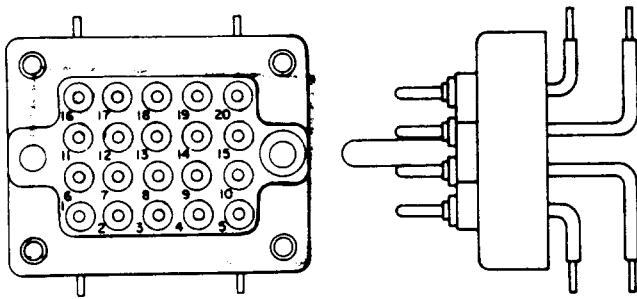


Fig. 2—KS-19080, L1, Plug

- (b) **KS-19080, L2:** The L2 plug (Fig. 3) has 20 terminals and is used on the 334C relay.
- (c) **KS-19080, L3:** The L3 plug (Fig. 3) has 17 terminals and is used on the 334A and D relays.

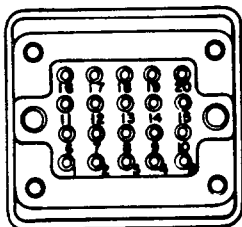
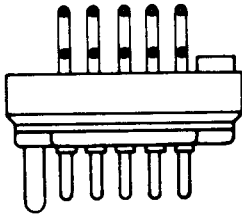


Fig. 3—KS-19080, L2 or L3, Plug

2.03 KS-19097-Type: The KS-19097-type (Fig. 4) are pin-polarized, multicontact, male plugs equipped with gold-plated, ribbon-type contacts which project at the rear for wire connections.

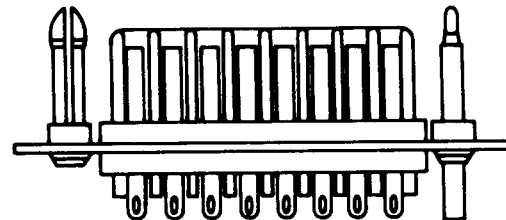
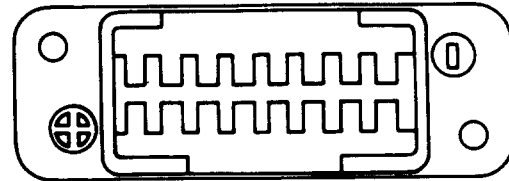


Fig. 4—KS-19097-Type Plug

- (a) **KS-19097, L1:** The L1 has 16 contacts and mates with the KS-19096, L1, receptacle. The KS-19097, L1, plug is used in group and intermediate amplifiers for the J68858A L-multiplex transmitting bay.
- (b) **KS-19097, L2:** The L2 has 32 contacts and mates with the KS-19096, L2, receptacle. The KS-19097, L2, plug is used in the 913A data test set.
- (c) **KS-19097, L3:** The L3 has 24 contacts and mates with the KS-19096, L3, receptacle. The KS-19097, L3, plug is used in the Mobile Transport System.

2.04 KS-19162-Type: These are multicontact plugs. For more information, see Table A.

TABLE A

KS-19162, LIST NO.	FIG. NO	NO. OF TERMINALS	MATES WITH CONNECTOR KS-19163, LIST NO.
1	5	50	1, 2
2	6	50	1, 2
3	7	50	3, 4
4	8	50	3, 4
5	9	72	5
6	10	72	6, 8
7	10	60	7
8	11	72	5
9	12	26	9, 10, 11
10	13	72	5
11	14	72	15, 16
12	15	5 groups, each with 5 terminals	Five L12, L13 or L14 or combi- nation thereof
13	14	72	15, 16
14	16	50	1, 17
17	13	72	5
18	10	66	22
19	17	50	1, 2
20	13	72	5
21	18	30	28, 29, 30
22	6	50	25
23	19	72	31
24	20	60	32
25	20	60	32
26	19	72	31
27	13	72	5
28	12	26	9, 10, 11
29	14	72	15, 16
30	8	50	3, 4
31	13	72	5
32	21	50	1, 17
33	22	72	5
34	23	60	32
35	24	72	31
36	25	60	32

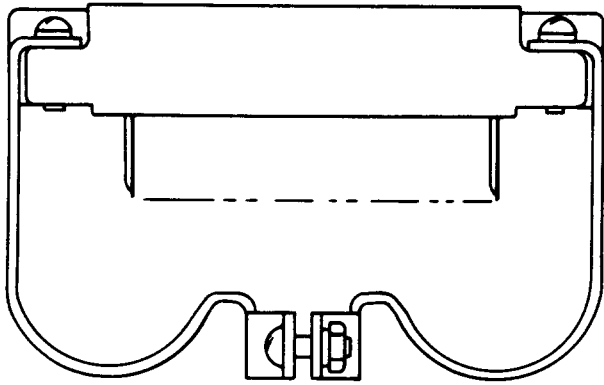


Fig. 5—KS-19162, L1, Plug

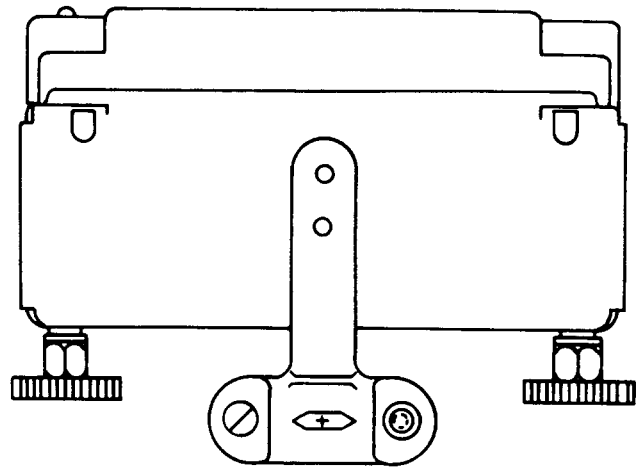


Fig. 8—KS-19162, L4 or L30, Plug

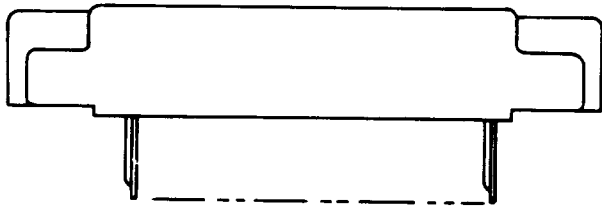


Fig. 6—KS-19162, L2 or L22, Plug

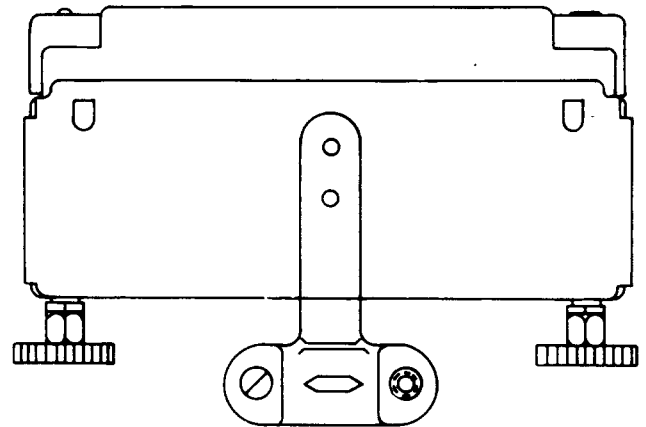


Fig. 9—KS-19162, L5, Plug

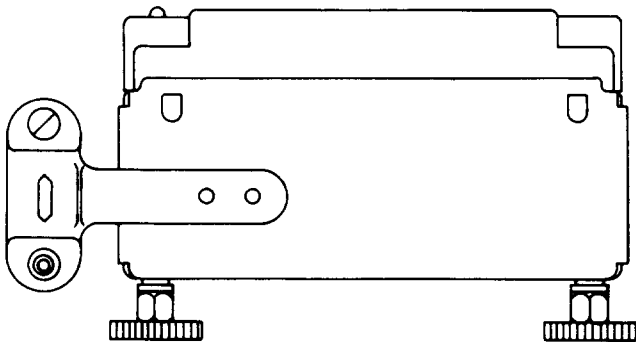


Fig. 7—KS-19162, L3, Plug

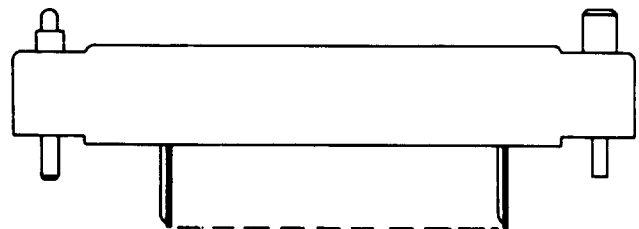


Fig. 10—KS-19162, L6, L7, or L18, Plug

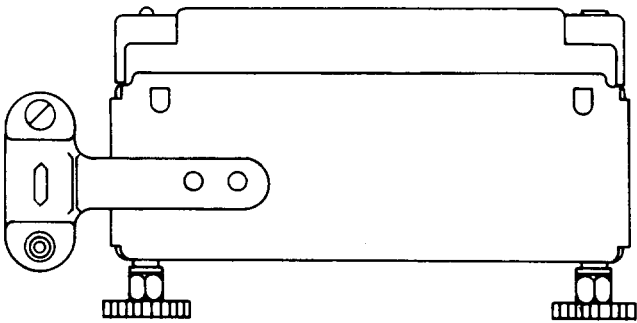


Fig. 11—KS-19162, L8, Plug

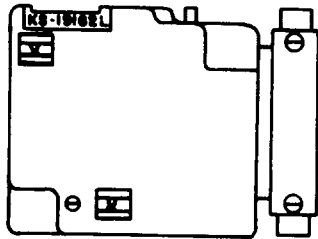


Fig. 12—KS-19162, L9 or L28, Plug

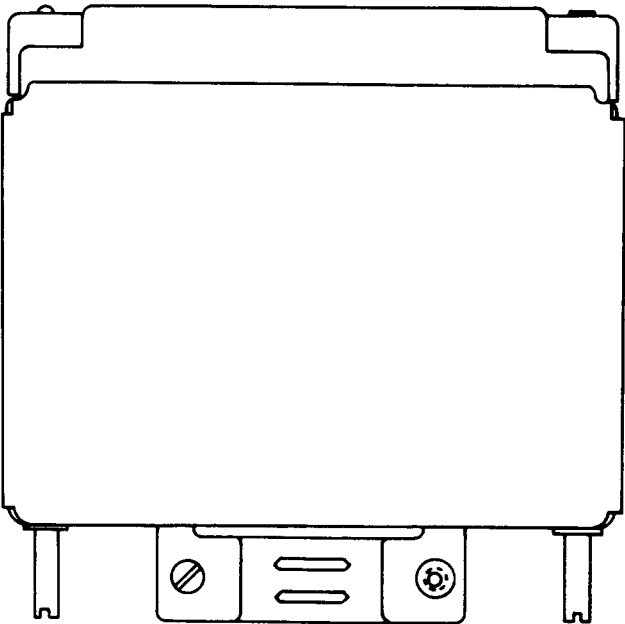


Fig. 13—KS-19162, L10, L17, L20, L27, or L31 Plug

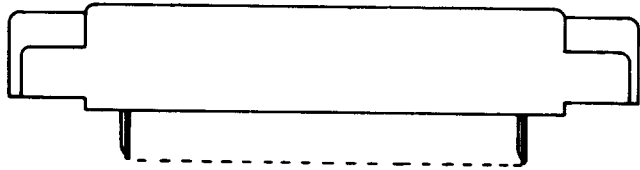


Fig. 14—KS-19162, L11, L13, or L29 Plug

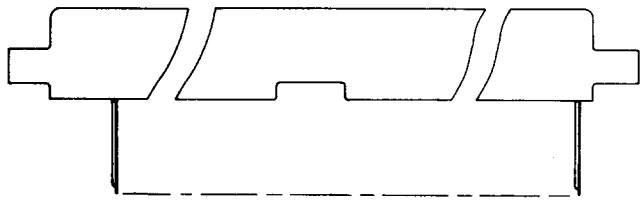


Fig. 15—KS-19162, L12, Plug

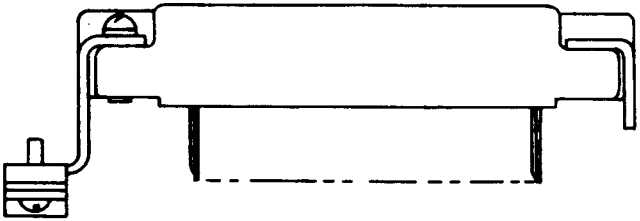


Fig. 16—KS-19162, L14, Plug

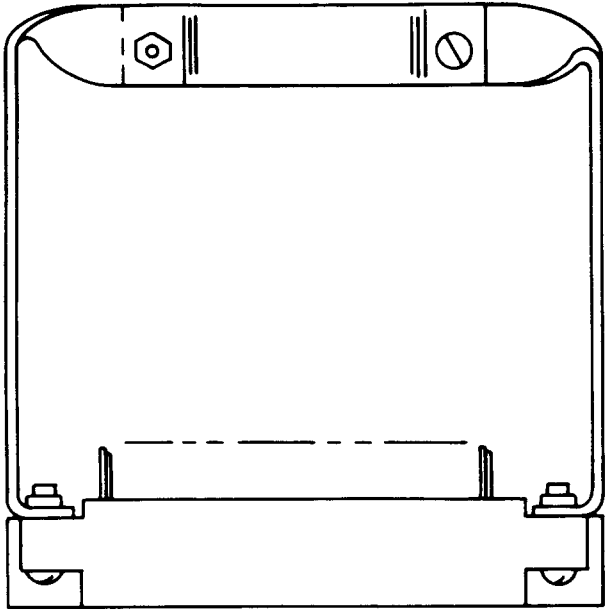


Fig. 17—KS-19162, L19, Plug

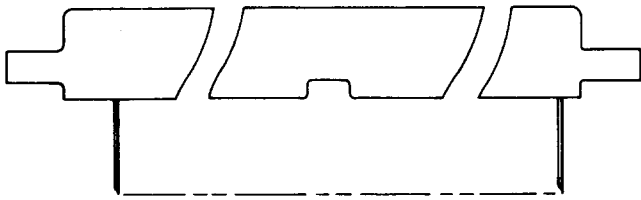


Fig. 18—KS-19162, L21, Plug

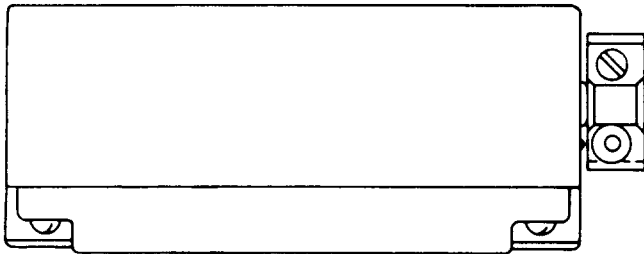


Fig. 19—KS-19162, L23 or L26, Plug

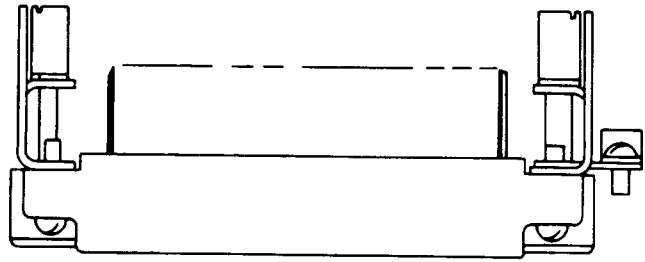


Fig. 20—KS-19162, L24 or L25, Plug

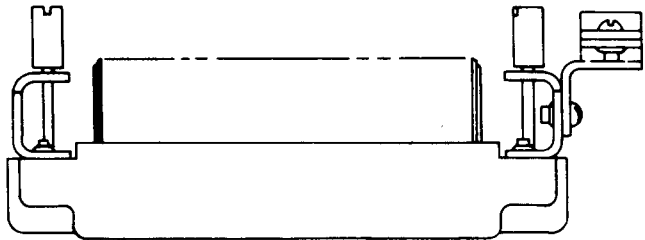


Fig. 21—KS-19162, L32, Plug

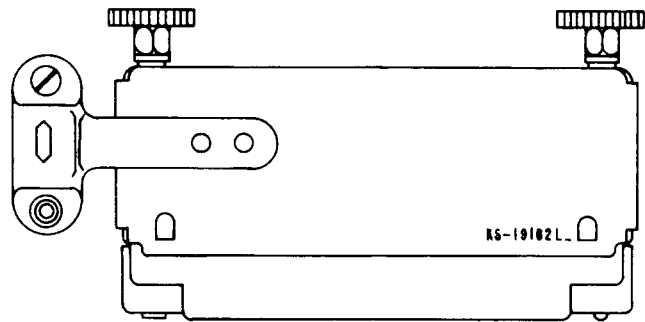


Fig. 22—KS-19162, L33, Plug

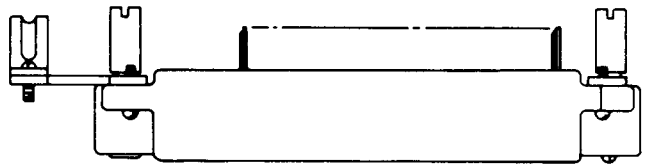


Fig. 23—KS-19162, L34, Plug

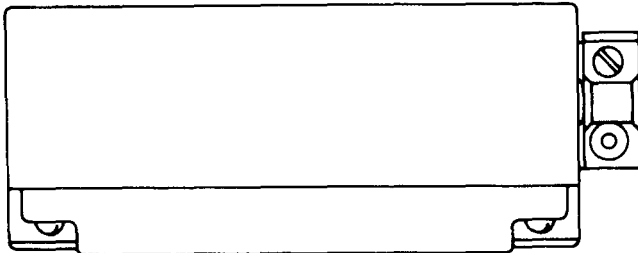
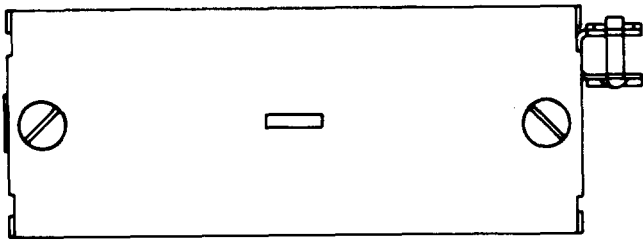


Fig. 24—KS-19162, L35, Plug

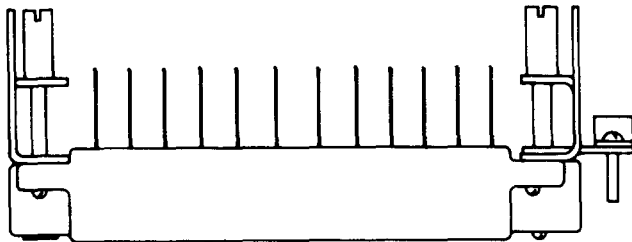
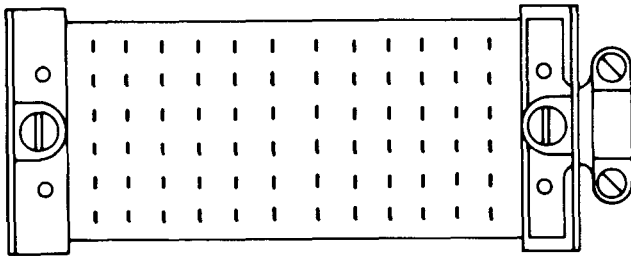


Fig. 25—KS-19162, L36, Plug

2.05 KS-19183, L1: The KS-19183, L1 (Fig. 26) is a miniature, 50-ohm, coaxial, snap-on plug. The KS-19183, L1, plug is arranged for solderless shield connection to a KS-19224 cable by means of a sleeve. This plug will mate with the KS-19180, KS-19181, KS-19182, KS-19185, and KS-19270 connectors. The KS-19183, L1, plug is used in the J68858 L-multiplex carrier telephone in Toll Systems.

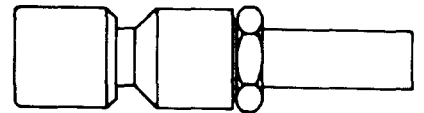


Fig. 26—KS-19183, L1, Plug