

PATCHING CORD ASSEMBLIES

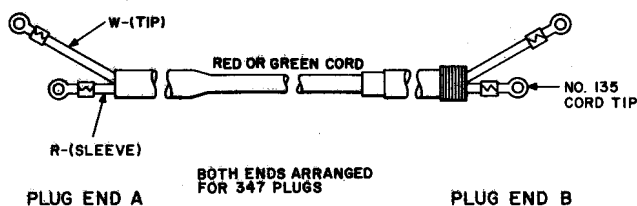
2-CONDUCTOR CORDS

P2A THROUGH P2T

DESCRIPTION

P2A

6 inches, 1, 2, 3, 4, and 6 feet long (Unless otherwise specified, the 3-foot length will be furnished.)

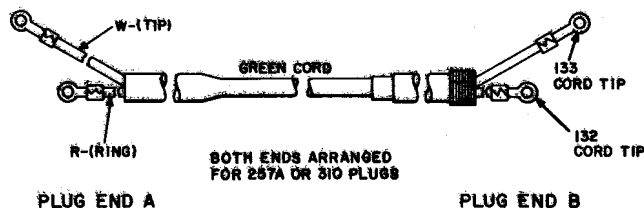


Res 0.21 Ω /ft

The code of the cord includes four 135 cord tips.

P2B

1, 2, 3, 4, and 6 feet long (Unless otherwise specified, the 3-foot length will be furnished.)

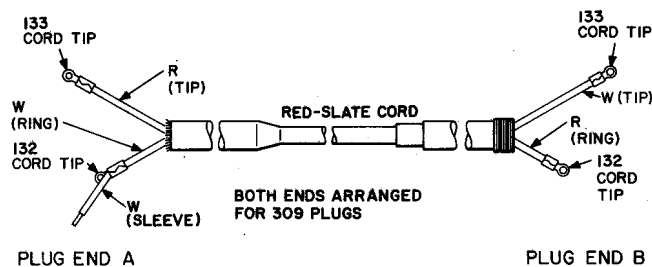


Res 0.21 Ω /ft

The code of the cord includes two 132 cord tips and two 133 cord tips.

P2G

10 feet long

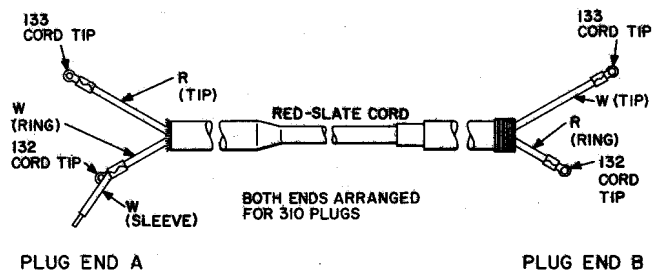


Res 0.18 Ω /ft

The code of the cord includes two 132 cord tips and two 133 cord tips. The cord was initially intended for use in dial system "A" switchboards equipped with 92- and 49-type jacks, respectively.

P2H

10 feet long



Res 0.18 Ω /ft

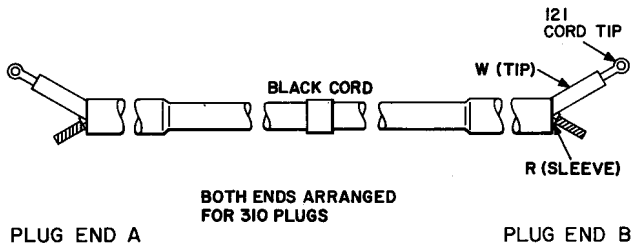
The code of the cord includes two 132 cord tips and two 133 cord tips. The cord was initially intended for use in dial system "A" switchboards equipped with 92- and 49-type jacks, respectively.

NOTICE

Not for use or disclosure outside the Bell System except under written agreement

P2J

6 and 9 feet long (Unless otherwise specified, the 9-foot cord will be furnished.)

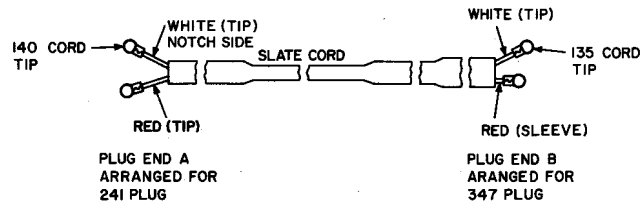


Res 0.01 Ω /ft

The code of the cord includes two 121 cord tips. The cord was initially intended for use in connection with battery control systems.

P2T

6 feet long

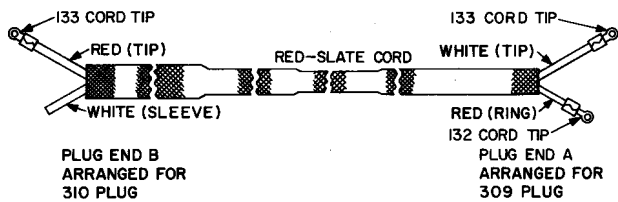


Res 0.18 Ω /ft

The code of the cord includes two 135 cord tips and two 140 cord tips.

P2P

10 feet long

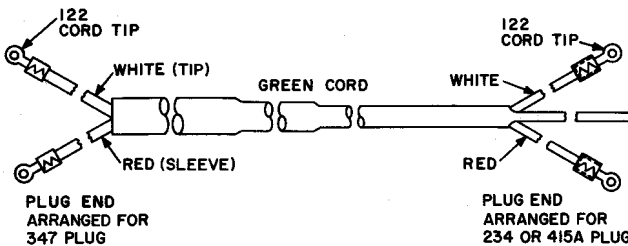


Res 0.18 Ω /ft

The code of the cord includes one 132 cord tip and two 133 cord tips.

P2R

19 feet 6 inches long



Res 0.21 Ω /ft

The code of the cord includes four 122 cord tips, two on each end.