

PATCHING CORD ASSEMBLIES

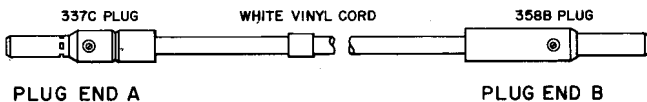
2-CONDUCTOR CORDS

P2EA THROUGH P2EY

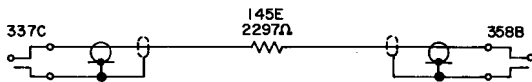
DESCRIPTION

→P2EA←

4 feet long



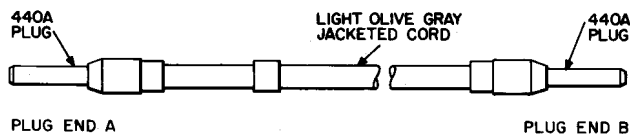
Res 0.2  $\Omega$ /ft



The code of the cord includes one 358B plug and one 337C plug. A 145E resistor (2297 ohms) is wired in series with the center conductor. This cord was initially intended for use with the KS-19895 test set.

→P2EB←

1 foot, 2, 3, 6, 8, 9, and 10 feet long (Length required must be specified when ordering.)



Res 0.055  $\Omega$ /ft



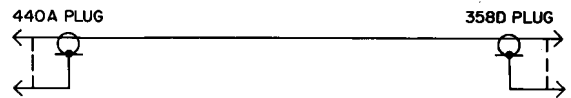
The code of the cord includes two 440A plugs. The cord was initially intended for use in the mastergroup multiple L4 carrier.

→P2EC←

1 foot 6, 8, and 10 feet long (Unless otherwise specified, 1-foot length will be furnished.)



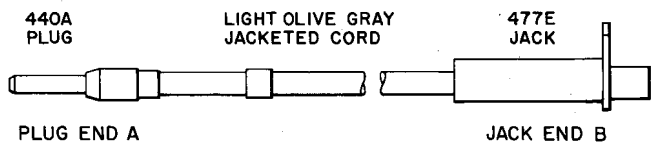
Res 0.055  $\Omega$ /ft



The code of the cord includes one 440A plug and one 358A plug. The cord was initially intended for use in the mastergroup multiplex L4 carrier.

→P2ED←

1 foot long



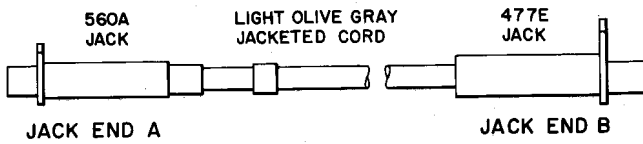
Res 0.055  $\Omega$ /ft



The code of the cord includes one 440A plug and one 477E jack. The cord was initially intended for use in the mastergroup multiplex L4 carrier.

→P2EE←

1 foot long



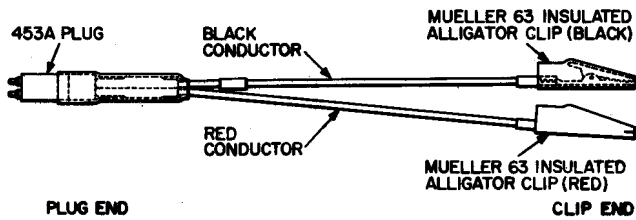
Res 0.055 Ω/ft



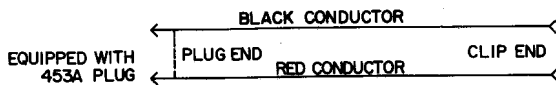
The code of the cord includes one 560A jack and one 477E jack. The cord was initially intended for use in the mastergroup multiplex L4 carrier.

→P2EF←

8 inches long (usable length)



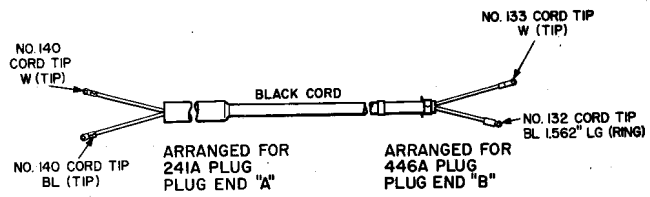
Res 0.21 Ω/ft



The code of the cord includes two Mueller 63 insulated alligator clips (one red and one black) and one 453A plug. The cord was initially intended for use with 302 and 303 connectors used in ESS offices.

→P2EG←

6 feet long

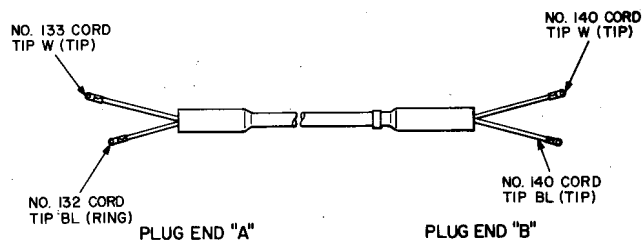


Res 0.21 Ω/ft

The code of the cord includes two 140 cord tips, one 133 cord tip, and one 132 cord tip. The cord was initially intended for use with the KS-19935 L7 telegraph carrier test set.

→P2EH←

6 feet long

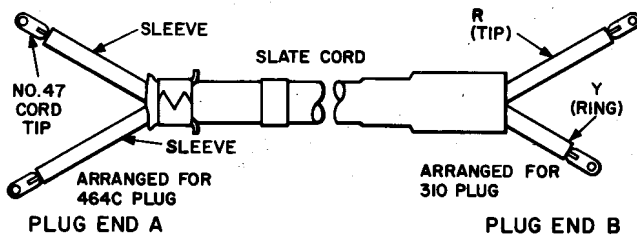


Res 0.21 Ω/ft

Plug end A is finished for assembly of a 291B plug. Plug end B is finished for assembly of a 241A plug. Initially intended for use on the KS-19935 L7 telegraph carrier test set.

→P2EJ←

4 feet long

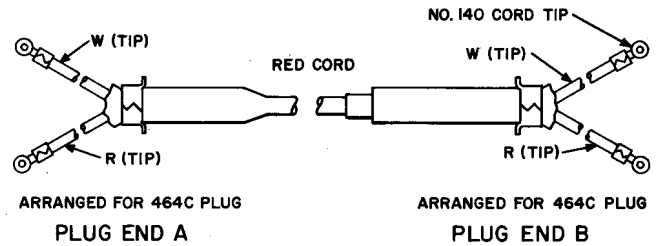


Res 0.006 Ω/ft

The code of the cord includes four 47 cord tips. The cord was initially intended for use in a varistor test circuit. Recommended in place of the P2AE cord.

→P2EL←

2 feet long (1-, 3-, 4-, 6-, and 8-foot cords can be obtained when specified.)

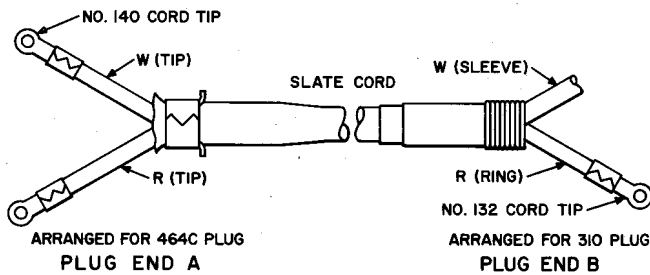


Res 0.18 Ω/ft

The code of the cord includes four 140 cord tips. The cord forms part of the 2P21A cord and is recommended in place of the P2AL cord.

→P2EK←

6 feet long

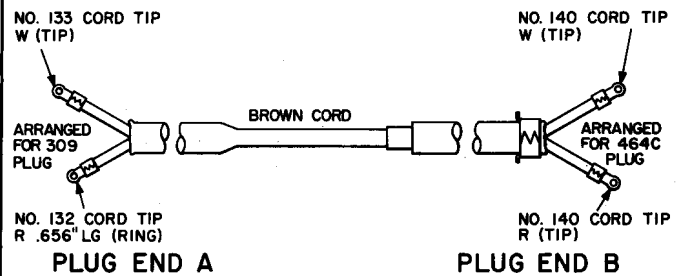


Res 0.18 Ω/ft

The code of the cord includes two 140 cord tips and one 132 cord tip. The cord forms part of the 2P27A cord and is recommended in place of the P2BL cord.

→P2EM←

8 feet long

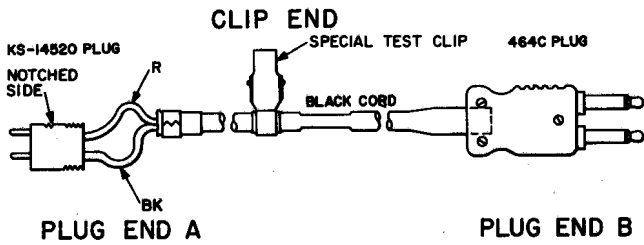


Res 0.18 Ω/ft

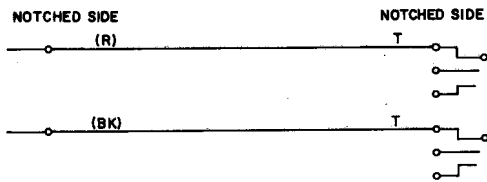
The code of the cord includes two 140 cord tips, one 133 cord tip, and one 132 cord tip. The cord forms part of the 2P22A cord and is recommended in place of the 2PAM cord.

→P2EN←

13 feet long



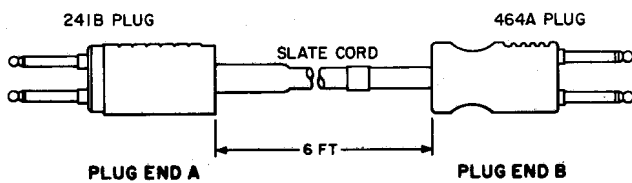
Res 0.21  $\Omega$ /ft



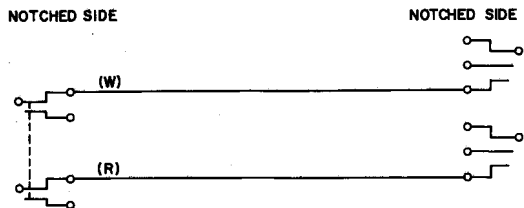
The code of the cord includes a KS-14520 plug and a 464C plug. The cord was initially intended for use in testing 2400 or 2600 cycle single frequency signal units and is recommended in place of the P2BN cord.

→P2EP←

6 feet long



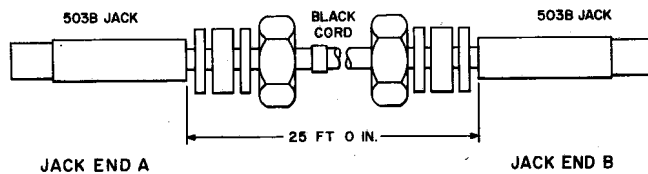
Res 0.21  $\Omega$ /ft



The code of the cord includes a 241B plug on one end and a 464A plug on the other end. The cord was initially intended for use in making transmission measurements of the 100A traffic service position operator's telephone circuit. This cord is recommended in place of the P2DP cord.

→P2ER←

25 feet long

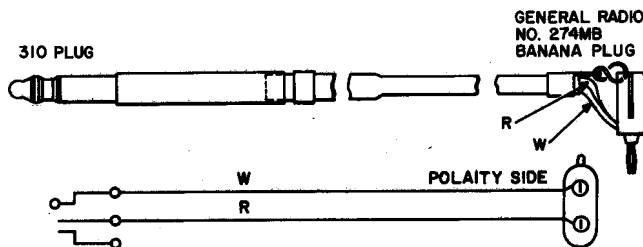


Res 0.01  $\Omega$ /ft

The code of the cord includes 25 feet of 729A coaxial cable and each end equipped with a 503B jack. A sealing gland arrangement is provided on each end of the cord for assembly to a 472-type apparatus case cover to maintain the integrity of the pressure system. Initially intended for use in the L4 Carrier System.

→P2ES←

4, 8, and 12 feet long (Unless otherwise specified, 4-foot length will be furnished.)

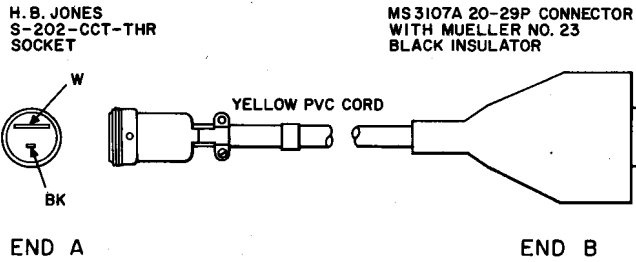


Res 0.18  $\Omega$ /ft

The code of the cord includes one 310 plug and one General Radio 274MB twin-banana plug. Initially intended for use in testing PICTUREPHONE® codexes. The white conductor terminates on the polarity side of the banana plug.

→P2ET←

23 feet long

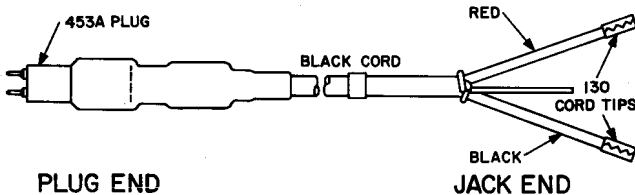


Res 0.006  $\Omega$ /ft

The code of the cord includes one H. B. Jones S-202-CCT-THR socket and one MS-3107A 20-29P connector with a Mueller 23 black insulator. Initially intended for use with KS-14103 L6 test set in central offices. The white conductor terminates at terminal N of the MS-3107A 20-29P connector, and the black conductor terminates at terminal G of the connector.

→P2EU←

2 feet long

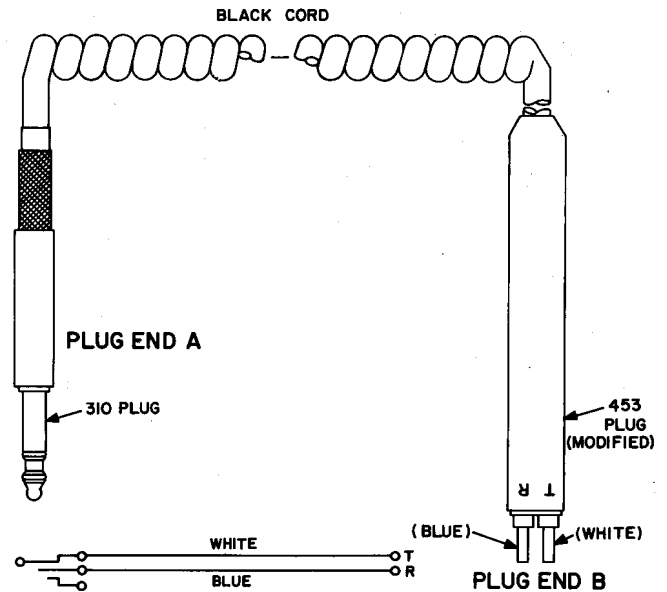


Res 0.21  $\Omega$ /ft

The code of the cord includes one 453A plug and two 130 cord tips. The cord was initially intended for use with 302 and 303 connectors.

→P2EW←

7 feet long (nominal length) (Retracted length is 17 inches.)



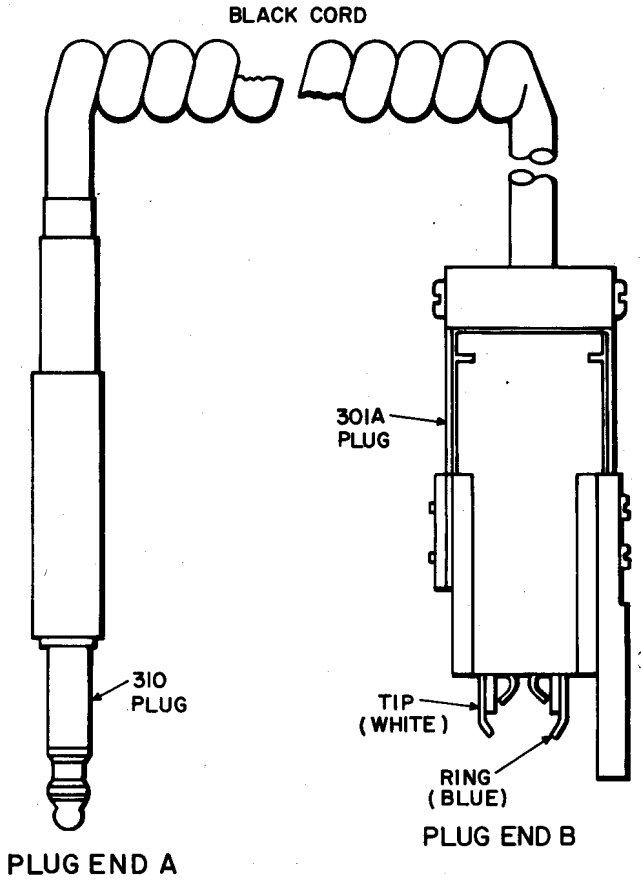
Res 0.21  $\Omega$ /ft

The code of the cord includes a 310 plug and a modified 453 plug. The plug was initially intended for use with the AT-8592 L1A test set.

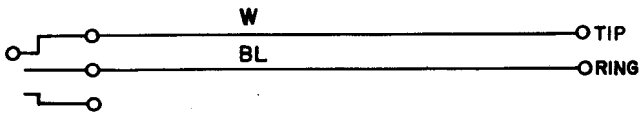
SECTION 032-312-113

→P2EY←

7 feet long (nominal length) (Retracted length is 17 inches.)



Res 0.21  $\Omega$ /ft



The code of the cord includes a 310 plug with tip and ring connection only and a 301A plug. The cord was initially intended for use with the AT-8592 L1A test set.