

TESTING AND ASSEMBLIES
2-CONDUCTOR CORDS
2W49A THROUGH 2W53A
DESCRIPTION

1. GENERAL

1.01 This section lists and illustrates the 2W49A through 2W53A 2-conductor cords.

1.02 This section is reissued to:

- Update the format
- Add the 2W52A and 2W53A cords.

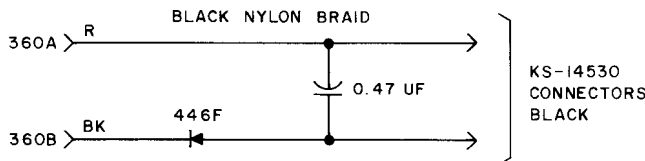
Revision arrows have been used to emphasize the more significant changes. The Equipment Test List is not affected.

1.03 For general information on these cords, refer to Section 032-312-100.

2. DESCRIPTION OF CORDS

2W49A

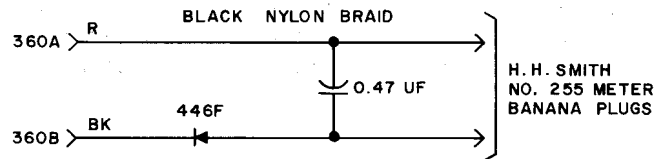
- 1 W2FU cord, 10 feet long, equipped with:
 - 1 360A tool
 - 1 360B tool
 - 2 KS-14530 connectors



The 2W49A cord includes two 47 cord tips. The cord was initially intended for use with the KS-14510, L1, meter.

2W49B

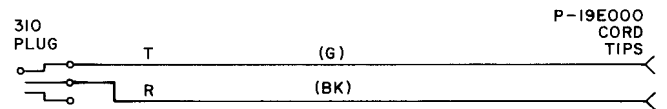
- 1 W2FU cord, 10 feet long, equipped with:
 - 1 360A tool
 - 1 360B tool
 - 2 255 H. H. Smith banana plugs



The 2W49B cord includes two 47 cord tips. The cord was initially intended for use with the Simpson 260- and 270-type VOMs and Triplet 630-type VOM.

2W50A

- 1 W2FT cord, 4 feet long (usable), equipped with:
 - 1 310 plug



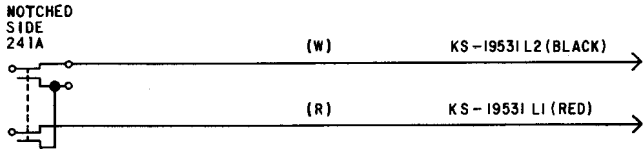
NOTICE

Not for use or disclosure outside the Bell System except under written agreement

SECTION 032-312-123

2W51A

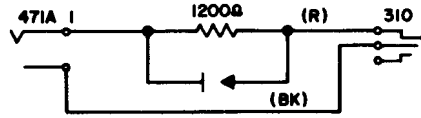
- 1 W2GB cord, 6 feet long, equipped with:
- 1 241A plug
- 1 KS-19531, L1, plug (Red)
- 1 KS-19531, L2, plug (Black)



The 2W51A cord includes two 120 cord tips and two 35 cord tips. This cord was initially intended for use with F-type signaling (SD-1C224-01).

2W52A

Consists of a W2GR cord, 5 feet long, equipped with a 471A jack and a 310 plug.



2W53A

Consists of a W2GS cord equipped with a 471A jack on one end and a 360A and B tool on the other end.

