

TESTING CORD ASSEMBLIES
4-CONDUCTOR CORDS
4W1A THROUGH 4W12A
DESCRIPTION

1. GENERAL

1.01 This section lists and illustrates the 4W1A through 4W12A 4-conductor cords.

1.02 This section is reissued to:

- Update the format
- Rate the 4W5A cord Mfr Disc.

Revision arrows have been used to indicate the changes. The Equipment Test List is not affected.

1.03 For general information on these cords, refer to Section 032-314-100.

2. DESCRIPTION OF CORDS

4W1A—MFR DISC.

No replacement.

4W1B—MFR DISC.

No replacement.

4W1C—MFR DISC.

No replacement.

4W1D—MFR DISC.

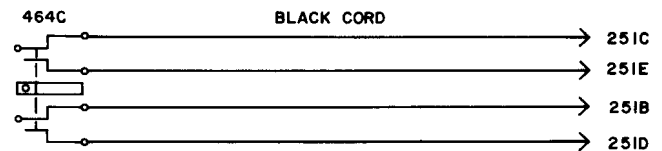
No replacement.

4W2A—MFR DISC.

No replacement.

4W3A

1 W4BW cord, 6 feet long, equipped with:
1 464C plug
1 251B plug
1 251C plug
1 251D plug
1 251E plug

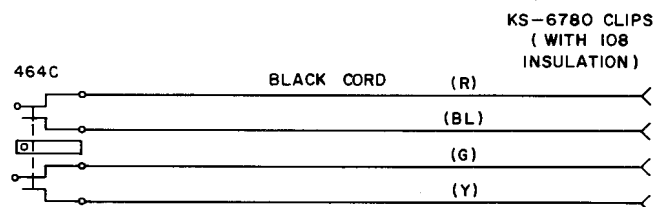


Res 0.21 Ω /ft

4W4A

1 W4CA cord, 6 feet long, equipped with:
1 464C plug

4 KS-6780 connecting clips (with four 108 cord tips, rubber insulators)



Res 0.21 Ω /ft

4W5A—MFR DISC.

No replacement.

NOTICE

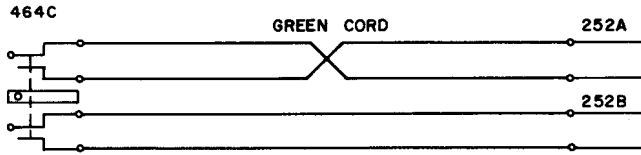
Not for use or disclosure outside the Bell System except under written agreement

SECTION 032-314-121

4W6A

1 W4CC cord, 12 feet long, equipped with:

- 1 464C plug
- 1 252A plug
- 1 252B plug

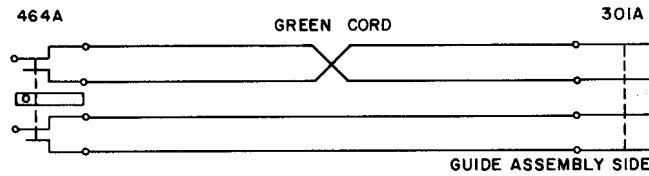


Res 0.21 Ω /ft

4W7A

1 W4CD cord, 12 feet long, equipped with:

- 1 464A plug
- 1 301A plug



Res 0.21 Ω /ft

4W8A—MFR DISC.

Replaced by the W4BT cord.

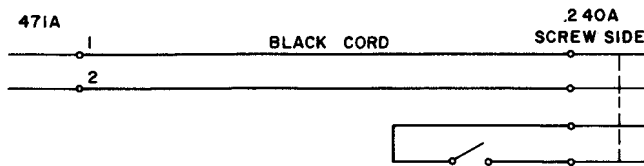
4W9A—MFR DISC.

No replacement.

4W10A

1 W4AY cord, 8 feet long, equipped with:

- 1 240A plug
- 1 471A jack

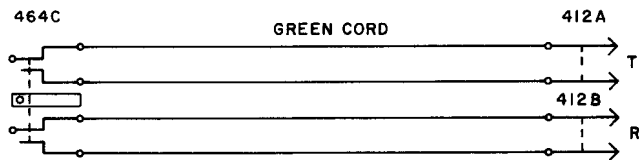


Res 0.16 Ω /ft

4W11A

1 W4CC cord, 12 feet long, equipped with:

- 1 464C plug
- 1 412B plug
- 1 412A plug



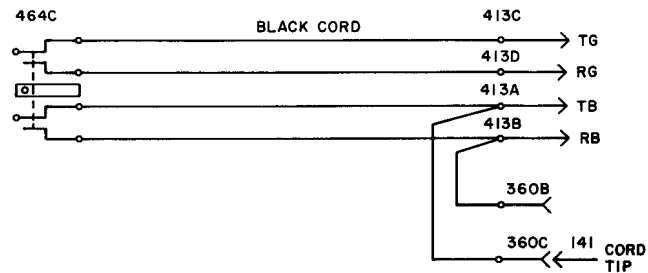
Res 0.16 Ω /ft

The 4W11A cord was initially intended for use at distributing frames for connecting such circuits as plugging-up and test trunk circuits to circuits terminated on 300-type connectors.

4W12A

1 W4CF cord, 6 feet long, equipped with:

- 1 464C plug
- 1 413A plug
- 1 413B plug
- 1 413C plug
- 1 413D plug
- 1 360B tool
- 1 360C tool
- 1 141 cord tip



Res 0.16 Ω /ft

The 4W12A cord was initially intended for use at distributing frames for connecting Varley test trunks to conductors terminated on 300-type connectors.