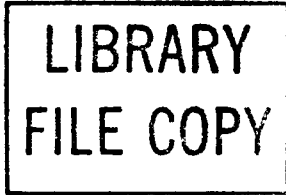


CODED PLUGS—1 THROUGH 199
DESCRIPTION



1. GENERAL

1.01 This section lists and illustrates coded plugs within the part or type number range of 1 through 199, used for the maintenance and operation of equipment in central offices.

1.02 This section is reissued for the following reasons. Since this is a major revision, revision arrows have been omitted. The Equipment Test List is not affected.

- (1) To update to the standard BSP format.
- (2) To divide this section into smaller sections for easier access and maintainability.
- (3) To rate the 169 and 174 plugs Mfr Disc.
- (4) To rate the 32 and 187 plugs A&M only.

1.03 Information previously shown in Issue 11 of this practice is now provided in the following Sections:

SECTION	TITLE
032-510-104	Coded Plugs—200 Through 249, Description
032-510-107	Coded Plugs—250 Through 299, Description
032-510-110	Coded Plugs—300 Through 324, Description
032-510-113	Coded Plugs—325 Through 349, Description
032-510-116	Coded Plugs—350 Through 374, Description
032-510-119	Coded Plugs—375 Through 399, Description

SECTION

TITLE

032-510-122	Coded Plugs—400 Through 424, Description
032-510-125	Coded Plugs—425 Through 449, Description
032-510-128	Coded Plugs—450 Through 474, Description
032-510-131	Coded Plugs—475 Through 499, Description
032-510-134	Coded Plugs—500 Through 514, Description
032-510-137	Coded Plugs—515 Through 526, Description

2. DESCRIPTION OF PLUGS

2.01 1D and E: The 1D and E plugs (Fig. 1) have single conductors and are equipped with long shells which cover the cord ends of the plug bodies to provide additional insulation. The plugs are used with the 99- or similar-type jacks and replace the 1B and 1C plugs.

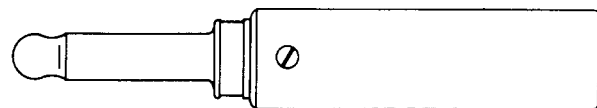


Fig. 1 — 1D or E Plug

- (a) The 1D plug has a black shell.
- (b) The 1E plug has a red shell.

2.02 32: The 32 plug (A&M Only) (Fig. 2) replaces the 65 plug. The 32 plug is used with the 7-, 15-, 19-, 21-, 36-, 37-, 51-, 66-, 85-, 87-, 100-, 110-, 112-, 113-, and 127-jacks.

NOTICE

Not for use or disclosure outside the Bell System except under written agreement

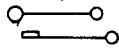


Fig. 2—32 Plug

2.03 **150:** The 150 plug (Fig. 3) is used in connection with common battery switchboards equipped with cut-off jacks, but not equipped with plug-up cords, to clear permanent signal by opening the lines. This plug is used with 280- or similar-type jacks.

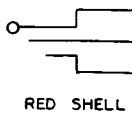


Fig. 3—150 Plug

2.04 **153D, E, and F:** The 153-type plugs (Fig. 4) are provided with resistances which bridge across the tip and sleeve springs of the jacks when the plugs are inserted. The 153-type plugs are used with the 99-, 215-, and similar-type jacks.

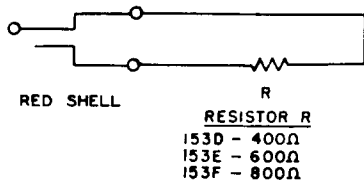


Fig. 4—153-Type Plug

(a) **153D:** The butt end of the 153D plug is colored red, with one groove cut in the shell, to show that it has a 400 ohm resistance.

(b) **153E:** The butt end of the 153E plug is colored white, with two grooves cut in the shell, to show that it has a 600 ohm resistance.

(c) **153F:** The butt end of the 153F is colored blue, with three grooves cut in the shell, to show that it has 800 ohm resistance.

2.05 **165C, E, and F:** The 165-type plugs (Fig. 5) are dummy plugs intended for switchboard cutover work and for use at test boards. The plugs are used with 218- or similar-type jacks.

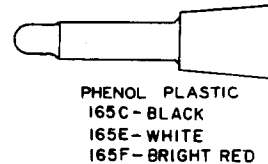


Fig. 5—165-Type Plug

(a) **165C:** The 165C plug replaces the 165B plug and has black insulating material.

(b) **165E:** The 165E has white insulating material.

(c) **165F:** The 165F plug replaces the 165D plug and has bright red insulating material.

2.06 **169:** The 169 plug is rated Mfr Disc.

2.07 **174:** The 174 plug is rated Mfr Disc.

2.08 **184B:** The ring connector of the 184B plug (Fig. 6) is strapped to the plug body. The 184B plug is furnished with a red shell, but can be obtained with a gray or black shell. The 184B plug replaces the 184 and D-93279 plugs and is used with the 49- or similar-type jacks.

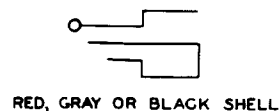


Fig. 6—184B Plug

2.09 **186:** The 186 plug (Fig. 7) consists of two separately insulated plugs encased in a nickel finished shell. The 186 plug is used with the 19C test set.

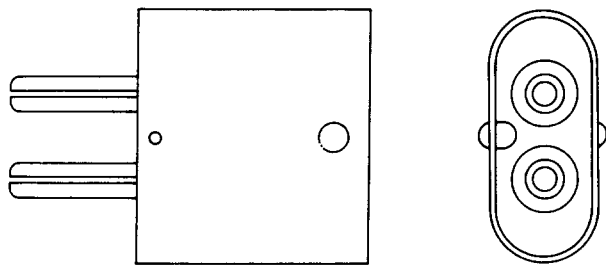


Fig. 7—186 Plug

2.10 **187:** The 187 plug (A&M Only) (Fig. 8) is equipped with a wooden handle to facilitate removal of the plug from the jack. The 187 plug is used with the 283 jack in either of two positions, and is provided with two guide posts for centering the plug in the jack. The plug is used in the panel dial line

finder equipment as an emergency switching plug for patching purposes.

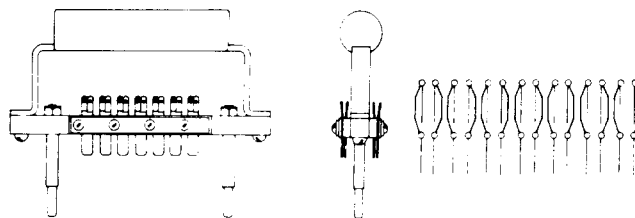


Fig. 8—187 Plug