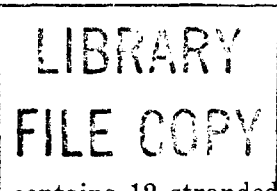


## CODED JACKS—650 THROUGH 700 DESCRIPTION



### 1. GENERAL

1.01 This section lists and illustrates coded jacks within the part or type number range of 650 through 700, used for the maintenance and operation of equipment in central offices.

1.02 Whenever this section is reissued, the reason for reissue will be listed in this paragraph.

### 2. DESCRIPTION OF JACKS

2.01 **651A and B:** The 651A and B jacks (Fig. 1) each consists of a modular-type frame, a 12-lead block spring assembly, and a clear plexiglass cover. These jacks will accept the D8W-type cord and provide a bridged connection when used with a 4-position D4BU type-cord or 6-position D6AP-type cord.

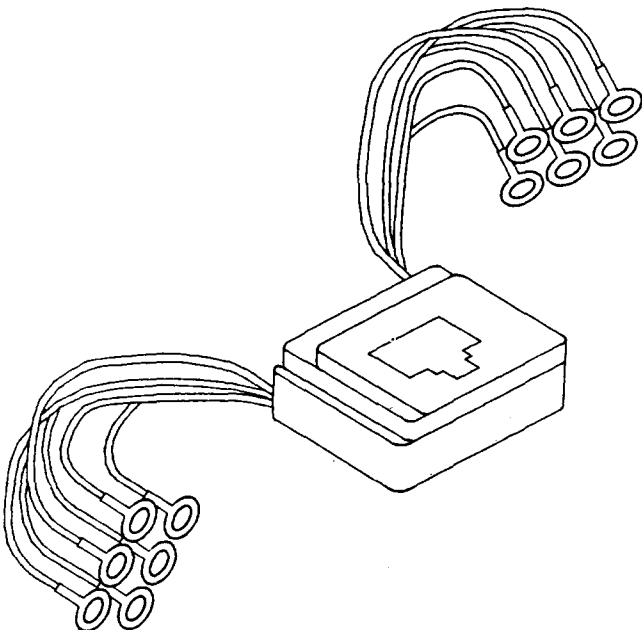


Fig. 1—651A or B Jack

(a) **651A:** The 651A jack contains 12 stranded leads, each approximately 5.0 inches in length. The 651A jack is used on the 635B connecting block.

(b) **651B:** The 651B jack contains 12 solid leads, each 8 inches in length. Each lead is stripped back 2.2 inches. The 651B jack is used on the 100A-12 connecting block.

2.02 **652A4, A6, A6C, A6D, B4, B6, C2D, C4, C4C, D4, D6, E, E2B, E4P, and WP4:** The 652-type jacks (Fig. 2) are modular-type jacks that consist of a gray thermoplastic frame.

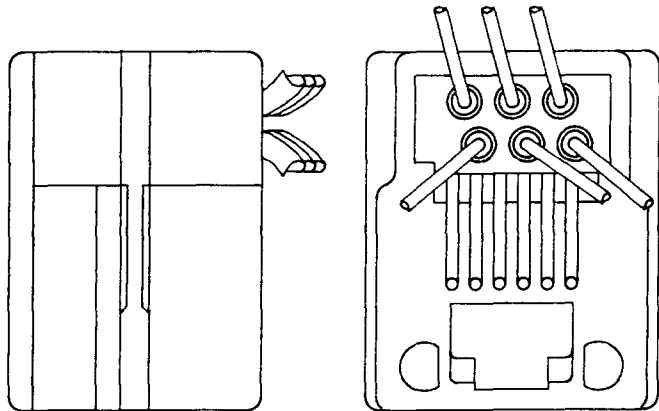


Fig. 2—652-Type Jacks

(a) **652A4:** The 652A4 jack uses a 645A4 jack (spring block) and is equipped with four spade-tipped leads (red, green, yellow, and black). The jack is used with the 750-type and the 2750-type panel telephone sets.

### NOTICE

Not for use or disclosure outside the  
Bell System except under written agreement

(b) **652A6:** The 652A6 jack uses a 645A6 jack (spring block) and is equipped with six spade-tipped leads (red, green, yellow, blue, white, and black). The jack is used on the E1-type ringer and 153AM1 and 153BM1 adapters.

(c) **652A6C:** The 652A6C jack uses a 645A6C jack (spring block) and is equipped with six spade-tipped leads (red, green, yellow, blue, white, and black). The jack is used with the B50BE-87 cord.

(d) **652A6D:** The 652A6D jack uses a 645A6D jack (spring block) and is equipped with six spade-tipped leads (red, green, yellow, blue, white, and black). The jack is used with the B25G and B50C connector cables.

(e) **652B4:** The 652B4 jack uses a 645B4 jack (spring block) and is equipped with four spade-tipped leads (red, green, yellow, and black). The jack is used with the 153AM2 and 153BM2 adapters.

(f) **652B6:** The 652B6 jack uses a 645B6 jack (spring block) and is equipped with six spade-tipped leads (red, green, yellow, blue, white, and black). The jack is used on the E1-type ringer and 153AM1 and 153BM1 adapters.

(g) **652C2D:** The 652C2D jack consists of a violet thermoplastic frame and a 645C2D jack equipped with two leads, 9.25 inches long. The 652C2D jack is used with the 30AM apparatus unit.

(h) **652C4:** The 652C4 jack is equipped with a 645C4 jack (top) violet in color and wired for telephone set use. The jack is used on the L1AM ringer.

(i) **652C4C:** The 652C4C jack consists of a violet thermoplastic frame and a 645C4C jack equipped with four leads 4.5 inches long with ring tip terminals. The 652C4C jack is used with the 91B connecting block.

(j) **652D4:** The 652D4 jack uses a modified 645B4 (841394232) jack and is used with the 153-type adapters.

(k) **652D6:** The 652D6 jack consists of a gray thermoplastic frame and a modified 645B6 (841394240) jack.

(l) **652E:** The 652E jack is a snap-in 4-conductor modular jack, equipped with four leads (yellow, green, red, and black). The jack is used on the 652A, C, and CW connecting blocks.

(m) **652E2B:** The 652E2B jack is violet. The jack will use only two leads (one green and one red) in the standard position of the tip and ring. The leads are 3 to 3-1/2 inches long with solder terminals. The jack is used in the 5001T01A telephone set.

(n) **652E4P:** The 652E4P jack is equipped with four leads with push-on connectors per housing assembly. The 652E4P jack is used as part of the 725C connecting block.

(o) **652WP4:** The 652WP4 jack is a weather-proof, modular-type jack used in outdoor locations or where severe environmental conditions exist. The jack has a spring-loaded swinging cover which closes and seals the jack opening when a modular-type plug is not inserted. A newly coded modular-type cord which has a cap and seal to protect the modular connection is required for use with this jack.

**2.03 653AM:** The 653AM jack is a singly-mounted, 3-conductor, twin-type jack (Fig. 3) for mating with a 338- or similar-type twin plug. Each jack's tip and ring elements contains an isolating (break) contact with each jack having two additional terminals for additional connections. All terminals are equipped for solderless wrap connections and the frame has one centrally located mounting hole. This jack is used on the DSX1 test jack assembly.

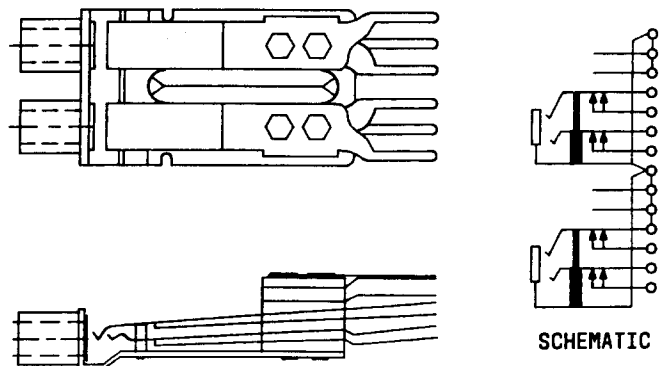


Fig. 3—653AM Jack

**2.04 654AM:** The 654AM jack is a singly-mounted, 3-conductor, twin-type jack (Fig. 4) for mating with a 338- or similar-type twin plug. Each jack's tip and ring elements contains an isolating (break) contact. All terminals are equipped for solderless wrap connections, and the frame has one centrally located mounting hole. This jack is used on the DSX1 test jack assembly.

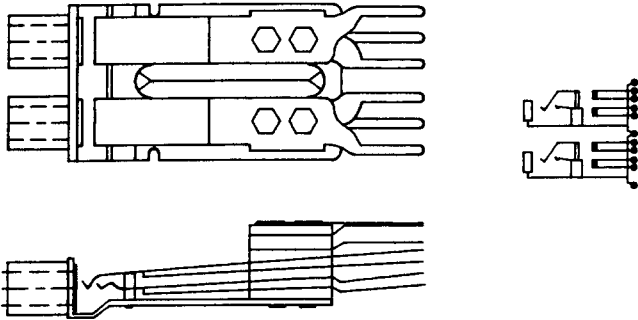


Fig. 4—654AM Jack

**2.05 655AM:** The 655AM jack is a singly-mounted, 3-conductor, twin-type jack (Fig. 5) for mating with a 338- or similar-type twin plug. Each jack's tip and ring elements contains an isolating (break) contact with one twin having an insulated break contact and the other an insulated make contact. All terminals are equipped for solderless wrap connections and the frame has one centrally located mounting hole. The jack is used on the DSX1 interbay patching jack circuit.

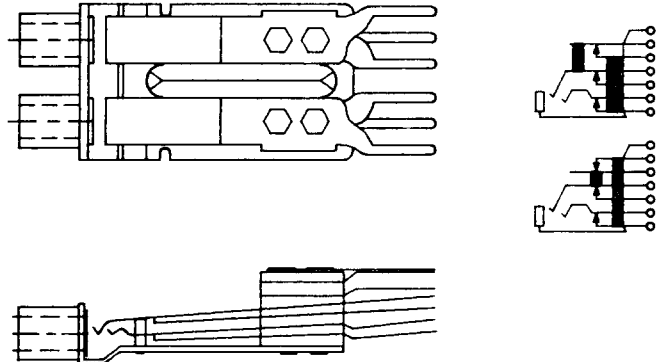


Fig. 5—655AM Jack