

SIGNALS
34, 39, AND 41 TYPES
AND
ASSOCIATED SIGNAL MOUNTINGS
PIECE-PART DATA AND REPLACEMENT PROCEDURES

1. GENERAL

1.01 This section covers the information necessary for ordering parts to be used in the maintenance of 34-, 39-, and 41-type signals. It also covers approved procedures for replacing these parts.

1.02 Part 2 of this section covers the piece-part numbers and the corresponding names of the parts which it is practical to replace in the field in the maintenance of these signals. No attempt should be made to replace parts not designated. Part 2 also contains explanatory figures showing the different parts. This information is called Piece-part Data.

1.03 Part 3 of this section covers the approved procedures for the replacement of the parts covered in Part 2. This information is called Replacement Procedures.

1.04 Before making any replacements on the apparatus covered herein, remove the circuit from service.

2. PIECE-PART DATA

2.01 The figures included in this part show the various piece parts in their proper relation to other parts of the signal. The piece-part numbers of the various parts are given together with the names of the parts as listed by the Western Electric Company merchandise department. When these names differ from those in general use in the field, the latter names, in some cases, are shown in parentheses.

2.02 When ordering parts for replacement purposes, give both the piece-part number and the name of the part, for example, P-81367 screw. Do not refer to the BSP number or to any information shown in parentheses following the piece-part number.

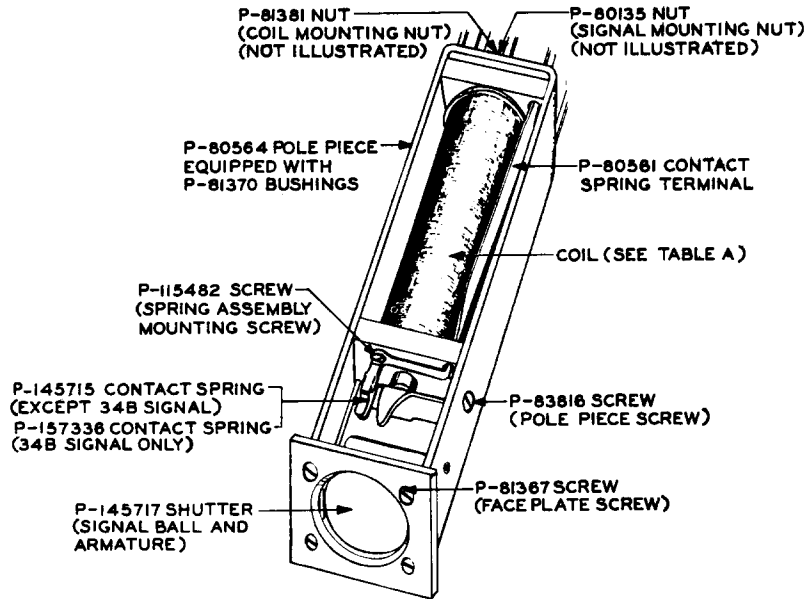


Fig. 1 - 34- and 39-type Signals

TABLE A

When ordering coils specify the P number followed by the word "Coil."

Signal Code	Coil	Signal Code	Coil	Signal Code	Coil	Signal Code	Coil
34A	P-126655	34D	P-126658	34G	P-126661	39B	P-132469
34B	P-132471	34E	P-126659	34H	P-126662	39C	P-132467
34C	P-126657	34F	P-126660	39A	P-132468		

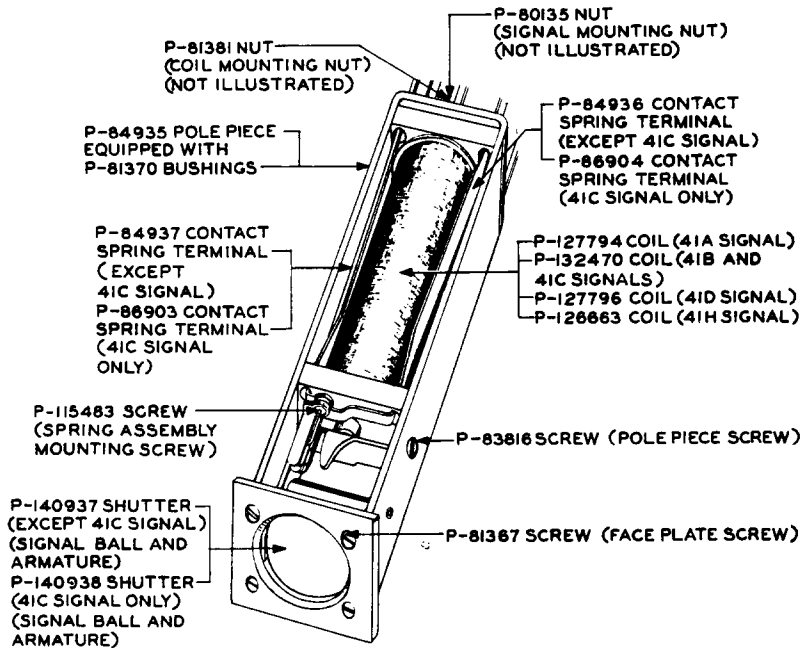
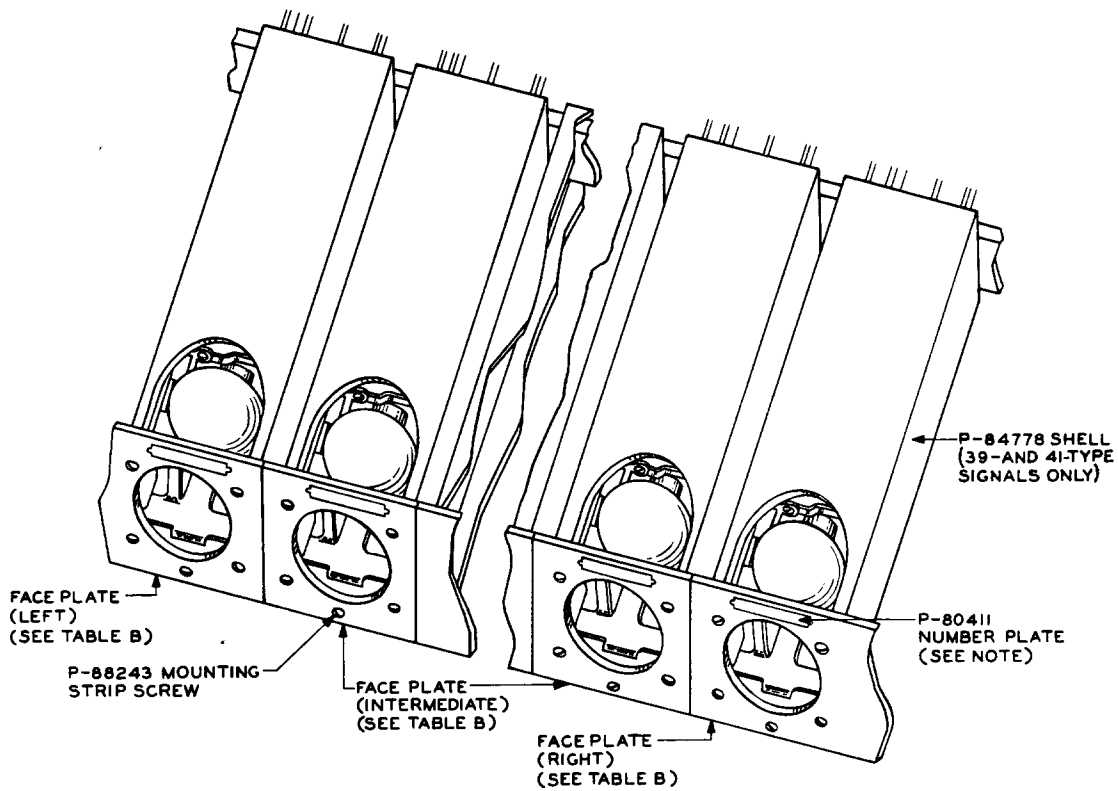


Fig. 2 - 41-type Signals



NOTE - FOR MOUNTINGS EQUIPPED WITH 41-TYPE SIGNALS NUMBER PLATES P-135137 (VERMILLION), P-135138 (WHITE), AND P-135139 (GREEN) MAY BE ORDERED.

Fig. 3 - Faceplates and Associated Parts for Signal Mountings, and Shell for 39- and 41-type Signals

TABLE B

When ordering faceplates, specify the P number followed by the word "Faceplate."

Signal Mounting Code	Faceplate (Left)	Faceplate (Intermediate)	Faceplate (Right)
30	P-80578	P-80568	P-80579
31	-	P-80569	-
32	P-80572	P-80566	P-80573
33	P-80574	P-80568	P-80575
34	P-80580	P-80566	P-80581
42	P-80578	P-80568	P-80579
44	P-80576	P-80567	P-80577
49	P-80580	P-80566	P-80581
53	P-84439	P-84436	P-84440
54	P-84438	P-84436	P-84437
56	P-80640	P-80568	P-80641
60	P-84783	P-80568	P-84784
61	P-80580	P-80566	P-80581
62	-	P-85743	-
68	P-80572	P-80566	P-80573
69	P-87674	P-87680	P-87675
70	-	P-88533	-
71	-	P-88533	-
72	-	P-88533	-
73	-	P-88533	-
74	-	P-88533	-
96	P-80574	P-80568	P-80575
97	P-131509	P-80568	P-131510

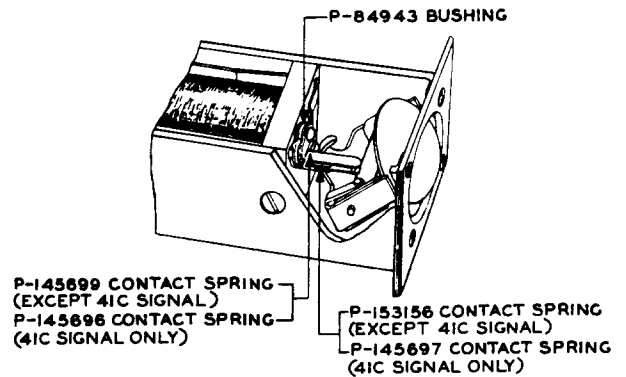


Fig. 4 - Contact Spring Assembly on 41-type Signals