

251-TYPE KEYS
REQUIREMENTS
(CONDENSED SECTION FOR 032-708-701)

1. REQUIREMENTS (Also See Section 020-012-711)

1.01 *Lever and Plunger Segment Movement:*
No bind.

1.02 *Contact Separation:* .010" (Readj. .012").

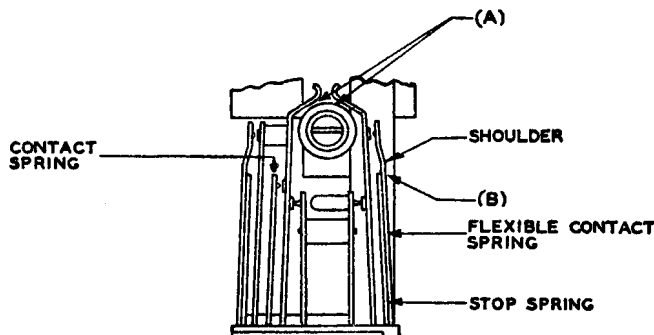


Fig. 1

1.03 *Spring Clearance:* Between springs designed never to make contact and between spring and frame .014" (Readj. .016").

1.04 *Plunger Spring Clearance*

(a) Fig. 1(A): .005" between plunger springs and rubber plunger.

(b) Max. .025" (Readj. Max. .020") between plunger springs and rubber plunger of one

unit with plunger of the paired unit resting against its plunger springs.

1.05 *Contact Pressure*

(a) 150 grams (Readj. .170 grams) between normally closed contacts. 62B gauge.

(b) 50 grams (Readj. 55 grams) between normally open contacts when closed. 68B gauge.

1.06 *Contact Follow:* .008" (Readj. .010") for normally open contacts.

1.07 *Flexible Spring Position*—Fig. 1(B): Rest on stop spring, at least on end nearest contact, when spring is unoperated.

1.08 *Contact Sequence Requirements*

(a) *Normal Contact Sequence Break-Make Combinations:* Closed contacts shall break before associated open contacts make by —.005" (Readj. .006").

(b) *Cross Sequence — Break-Make Spring Combinations on Ringing Spring Assemblies:* All closed contacts operated by a plunger shall break before any open contacts make by .005" (Readj. .006").

1.09 *Lever Operate Pressure:* 420 grams, max. 1590 grams (Readj. 450 grams, max. 1360 grams). 79B and 79F gauges.

1.10 *Lever Release:* 75 grams (Readj. 85 grams). 62B gauge.