

TIME-DELAY RELAY, KS-15513
WESTINGHOUSE ELECTRIC CORPORATION
MODIFICATION TO PROVIDE AN OILING DEVICE

1. GENERAL

1.01 This section covers the procedures for modifying the KS-15513 time-delay relays, manufactured by Westinghouse Electric Corporation to provide for the lubrication of the motor bearings without removing the relays from the panel. The relays are primarily used with the 900-type power plant control circuits.

1.02 This modification consists of mounting an oiling device on the KS-15513 time-delay relay. The oiling device provides means for lubricating the motor bearing through an oil tube without disconnecting the relay from the power supply.

1.03 Names of parts shown in parentheses on the figure should not be used for ordering information. The oiling device is the only part that should be ordered to make this modification.

2. TOOLS AND MATERIALS

CODE OR SPEC NO.	DESCRIPTION
TOOLS	
R-5850 (modified)	3/4-inch Open End Wrench (with head thickness ground down to 3/32 inch)
—	6-1/2-inch P-Long-nose Pliers
—	4-inch Regular Screwdriver
—	5-inch Regular Screwdriver
—	Westinghouse Electric Corporation No. S-1724230 Oiling Device

3. PROCEDURE FOR MOUNTING OILING DEVICE

3.01 Before making any modifications on the relay, make sure service is maintained as covered in the section covering the equipment with which the relay is associated.

3.02 Disconnect the leads from all of the terminals using either the 4-inch regular screwdriver or P-long-nose pliers as required. Tag the leads to facilitate reconnecting them. Remove the relay mounting screws using the 5-inch regular screwdriver. Remove the relay from its mounting, and remove the cover.

3.03 Place the relay on a bench with the oil reservoir cap at the front and uppermost. Hold the motor fastening nut with the modified R-5850 wrench to prevent it from loosening. Remove the cap using the P-long-nose pliers.

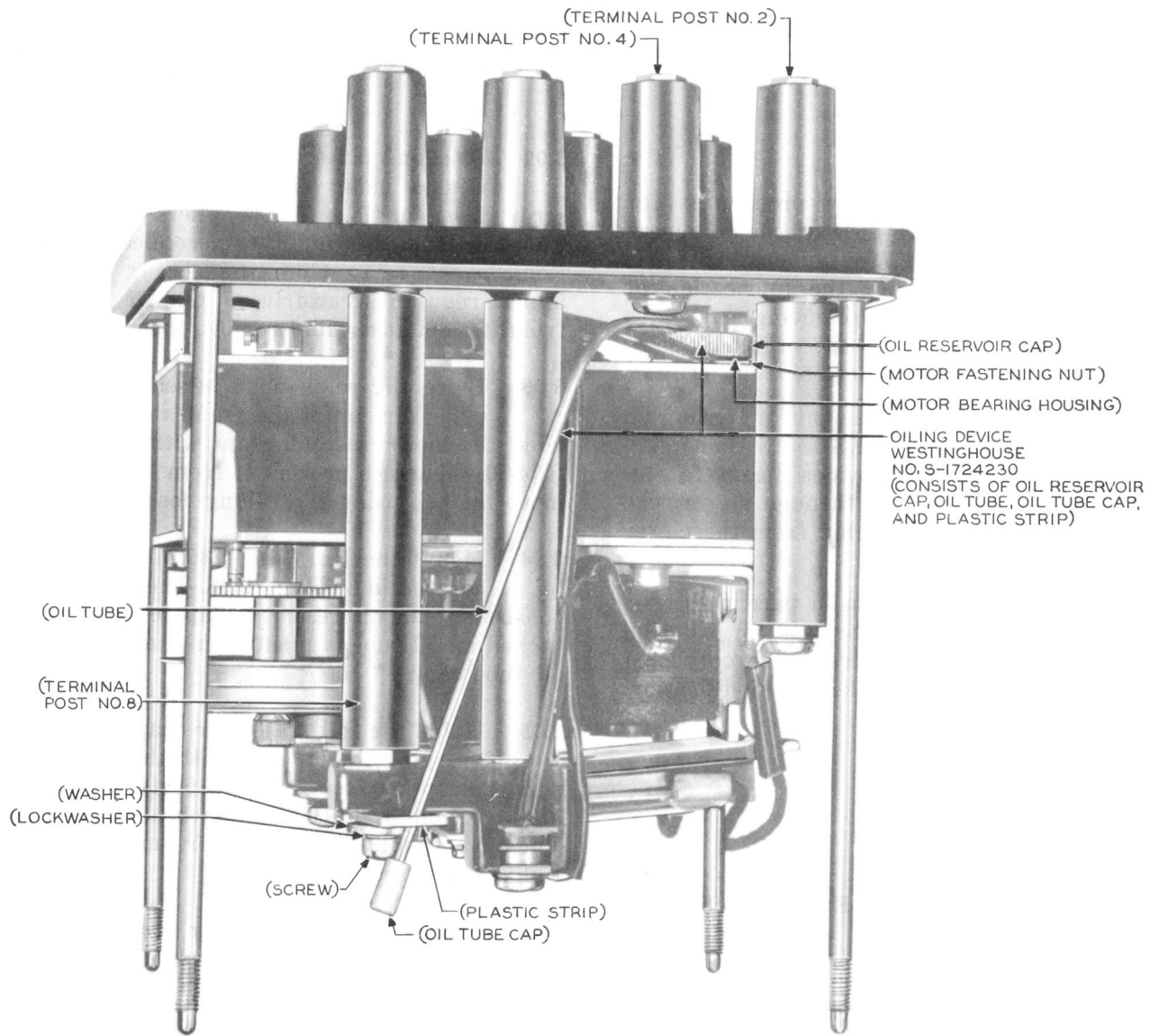
3.04 Mount the No. S-1724230 oiling device as covered in 3.05 and 3.06. The oiling device consists of an oil reservoir cap to which is attached an oil tube, a plastic strip, and a knurled oil tube cap.

3.05 Hold the oil reservoir cap uppermost grasping the oil tube with the fingers. Insert the cap between terminal posts No. 2 and 4 and position it on the motor bearing housing. Then using the P-long-nose pliers, mount the cap, tightening it securely in place.

3.06 Using the 4-inch regular screwdriver, remove the screw, lockwasher, and washer from terminal post No. 8. With the lockwasher and washer still on the screw, insert the screw through the large hole in the plastic strip and into the mounting hole in terminal post No. 8. Tighten the screw securely.

3.07 Remove the knurled oil tube cap and lubricate the motor as covered in Section 040-664-701.

3.08 Mount the relay securely in place and connect the leads to the proper terminals. Check that the relay meets the requirements as covered in Section 040-664-701.



**Fig. 1 – KS-15513 Time-Delay Relay (Relay Cover Removed)
Side View Showing Oiling Device**