

## METHOD OF CONNECTING WIRES TO SPLIT TERMINALS

### 1. GENERAL

1.01 This section covers the method of connecting wires at split terminals such as those on the "EN" and "GN" terminal strips on translator frames in No. 1 and No. 5 crossbar central offices equipped for automatic message accounting.

### 2. TOOLS AND MATERIALS

- 2.01 5" "V" Notch Diagonal Pliers.
- 2.02 P-Long Nose Pliers.
- 2.03 22-gauge "K" Type Wire-Single.

### 3. PROCEDURE

3.01 Remove the insulation from the end of the wire for a distance of approximately  $1/8$ ".

3.02 Using the long nose pliers, insert the wire in the slot of the terminal and push it back approximately half the depth of the slot with the insulation drawn up against the side of the terminal.

3.03 Pull the insulated portion of the wire around the terminal, and make a full wrap as shown in Fig. 1.

3.04 Allow approximately one inch of slack in the jumper in the case of translator frames, the slack to be dressed back in the coil field after the connections at the terminals are completed.

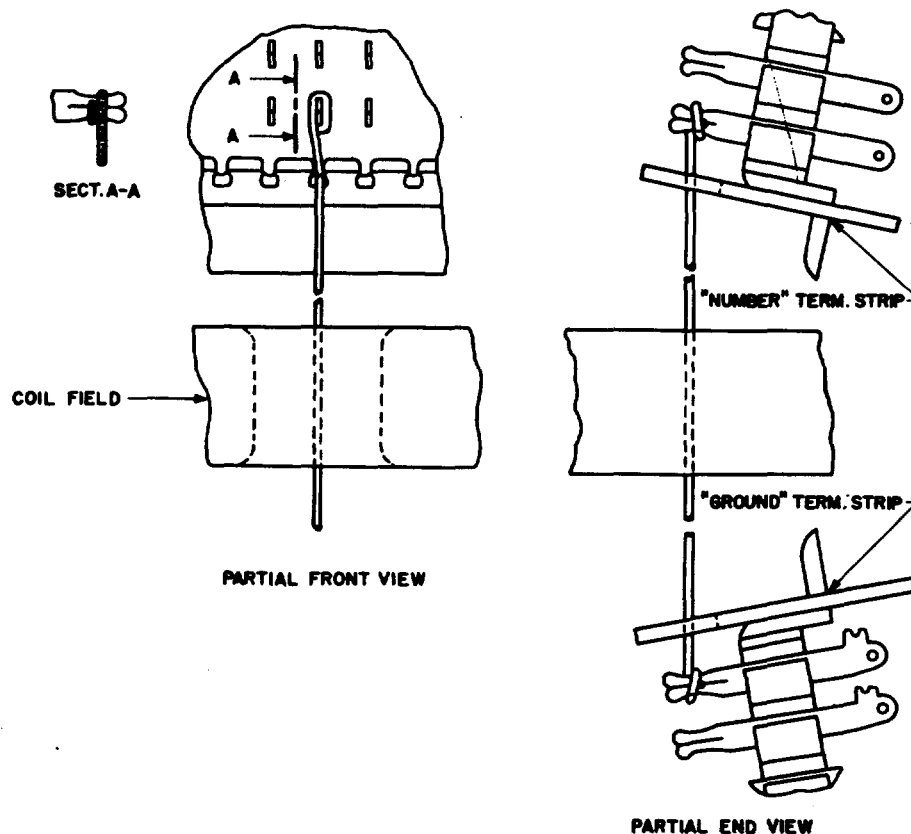


FIG. 1 - METHOD OF CONNECTING WIRE TO  
SPLIT TERMINALS