

TOOLS

ADJUSTERS III - DESCRIPTION

1. GENERAL

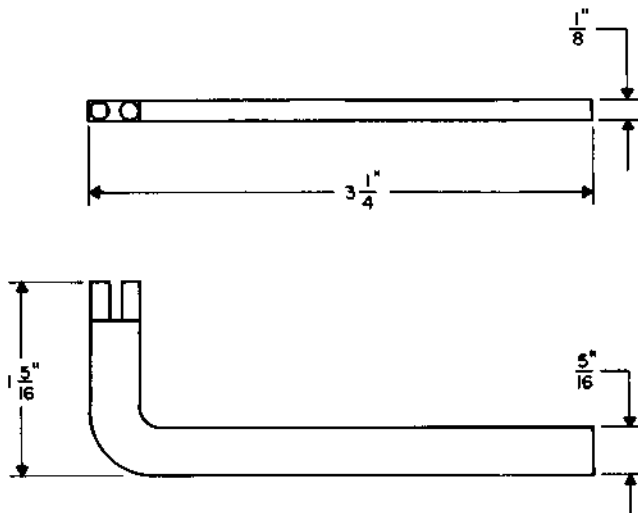
1.01 This section covers coded Bell System adjuster tools.

1.02 When this section is reissued, the reason for reissue will be listed in this paragraph.

1.03 The information contained in this section supersedes the corresponding information in Sections 074-124-101, 074-126-101, 074-127-101, 074-128-101, 074-129-101, 074-131-101, 074-132-101, 074-133-101, and 074-134-101.

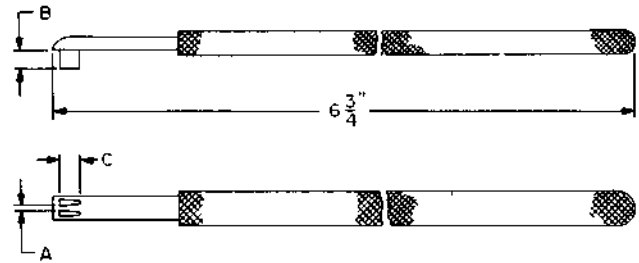
1.04 See tool index for other Adjuster practices.

483A



For use on universal-type keys.

505A
506A
506B
507A



TOOL	DIM. A	DIM. B	DIM. C
505A	0.015"	5/32"	5/32"
506A	0.024"	5/32"	5/32"
506B	0.024"	3/32"	3/16"
507A	0.032"	5/32"	5/32"

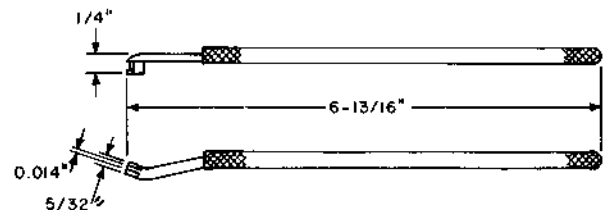
Spring adjusters with insulated handles.

The 506B tool replaces the D-157398 spring adjuster.

The 505A, 506A, and 507A tools are for use on U-, Y-, and similar-type relays and 1- and 2-type timers.

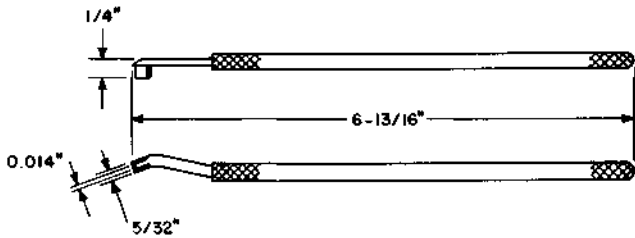
The 506B tool is for use on 444-type jacks.

524A



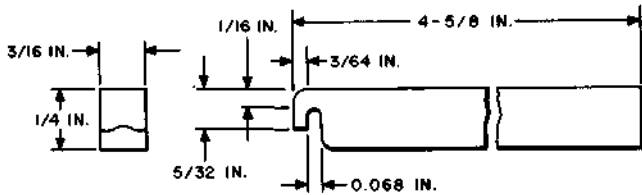
Spring adjuster. For use on 245-, 254-, 263-, and 264-type relays.

524B



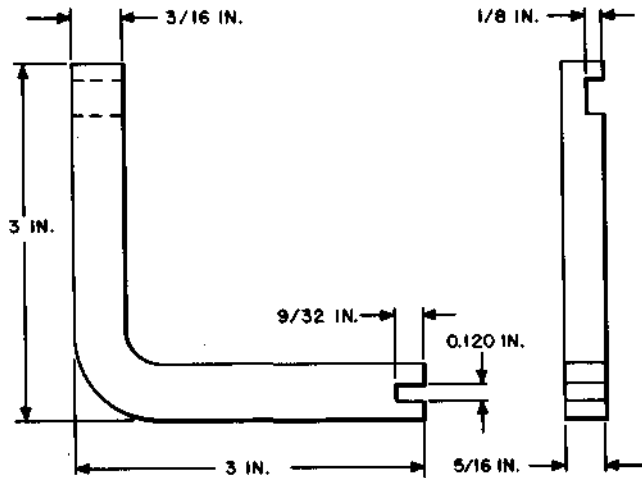
Spring adjuster. For use on 245-, 254-, 263-, and 264-type relays.

532B



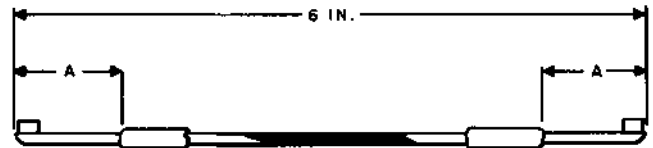
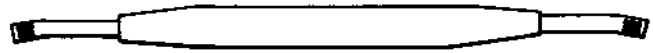
Replaces the 532A tool. For use on 300-, 304-, 314-, 324-, and similar-type switches and 245-, 254-, 263-, and 264-type relays.

533A

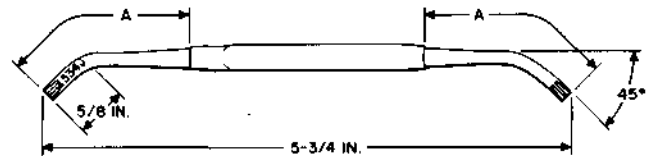


Bearing lug adjuster. For use on 300-, 304-, 314-, 324-, and similar-type switches.

- 534A
- 534B
- 534C
- 534D
- 534E
- 534F
- 534G
- 534H



534J



TOOL	SLOT WIDTH	DIM. A
534A	.025"	1"
534B	.031"	1"
534C	.035"	1"
534D	.043"	1"
534E	.018"	1"
534F	.025"	1-11/16"
534G	.031"	1-11/16"
534H	.043"	1-11/16"
534J	.025"	1-9/16"

Spring adjusters.

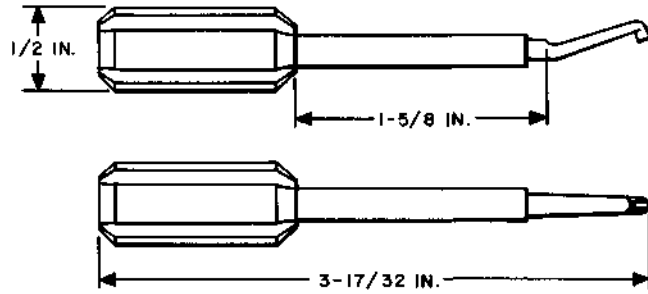
The 534A, 534B, 534C, 534D, and 534E tools are for use on 300-, 304-, 314-, 324-, and similar-type switches.

The 534D tool is also for use on 266-type relays.

The 534F, 534G, and 534H tools are for use on AF-, AG-, AJ-, and AK-type relays.

The 534J tool is for use on AM-type relays.

535A
535B



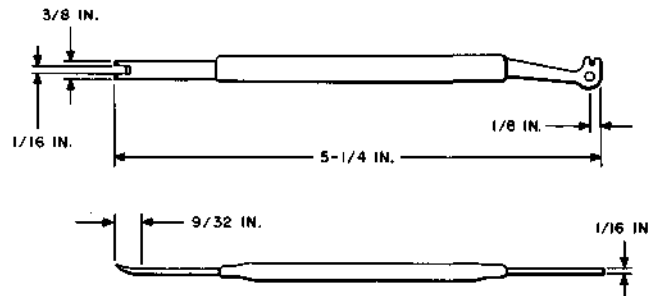
TOOL	SLOT WIDTH
535A	.018"
535B	.020"

Spring adjusters.

The 535A tool is for use on 300- and similar-type switches, 216-type switches, and 245-, 254-, 263-, and 264-type relays.

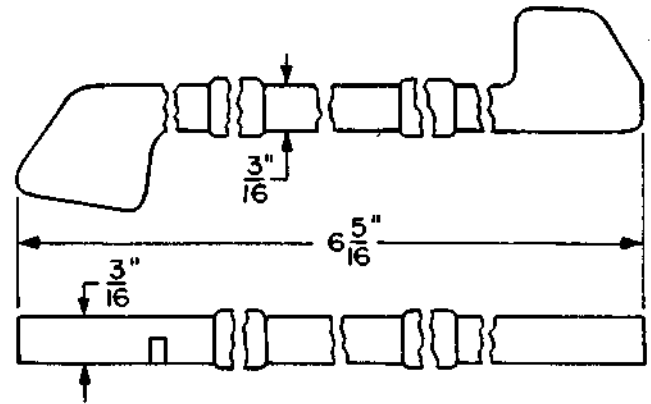
The 535B tool replaces the D-178348 tool and is for use on KS-13835 readers.

537A



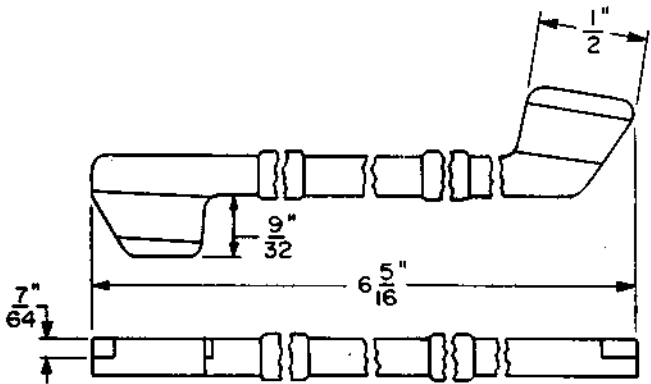
Strap wire tool. For use on 300-, 304-, 314-, 324-, and similar-type switches and 245-, 254-, 263-, and 264-type relays.

545A



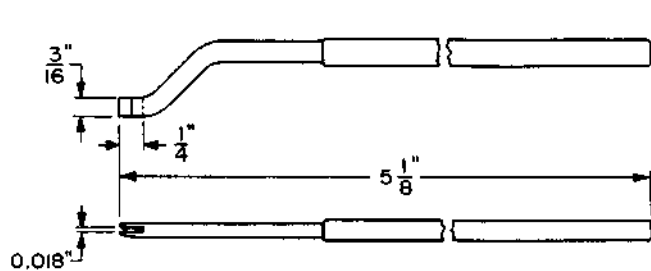
For use on 245-, 254-, 263-, and 264-type relays.

546A



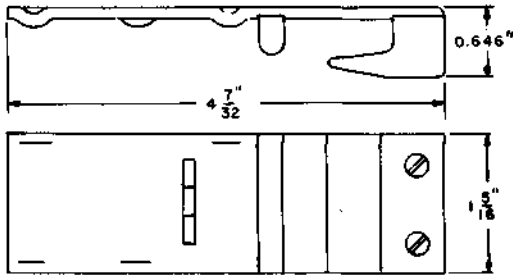
For use on 245- and 254-type relays.

549A



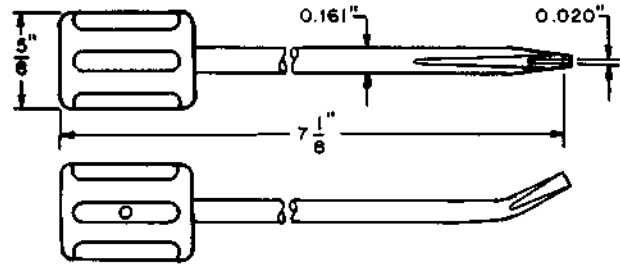
Spring adjuster. For use on 300- and similar-type switches.

575A



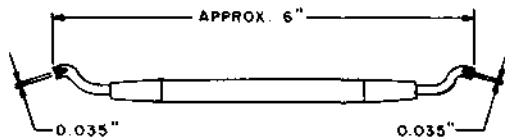
Feeder brush aligner. For replacing feeder brushes in the 10-, 11-, 26-, and 27-type banks.

583A



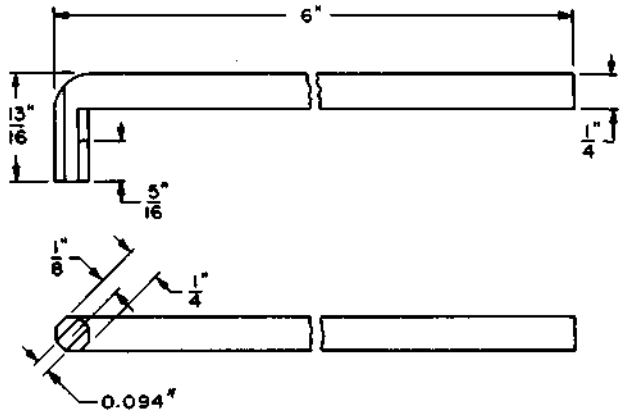
Spring adjuster. Replaces the D-159890 multiple brush adjuster. For adjusting panel multiple brushes.

579A



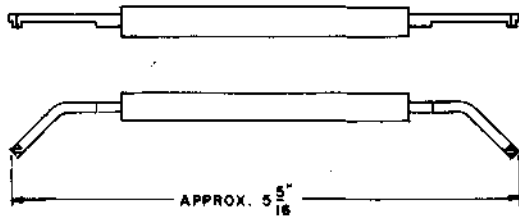
For adjusting vertical unit multiple strips of the 300-, 304-, 324-, and similar-type switches.

589A



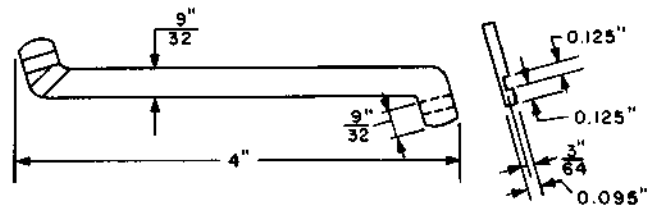
Spring adjuster. For use on helical spring-type clutches.

582A



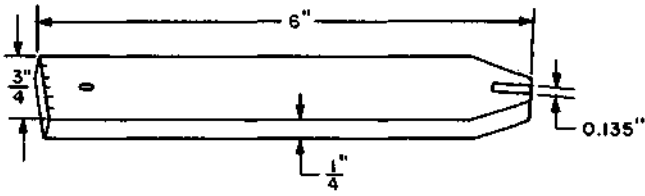
Spring adjuster. For adjusting the 0.030-inch spring tangs next to the core on UA-type relays.

597A



Armature adjuster. Replaces the AECo H-14768 tool. For use on step-by-step relays.

606A



Armature tab adjuster. For use on 263- and 264-type relays.