

TOOLS

PANEL OFFICE - DESCRIPTION

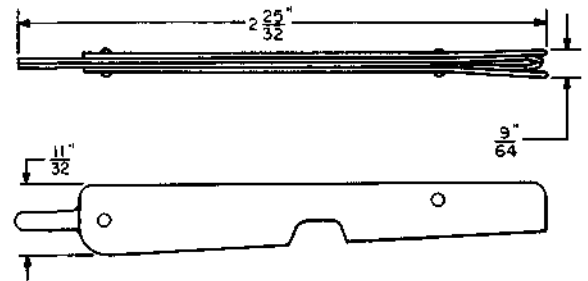
1. GENERAL

1.01 This section covers coded and noncoded Bell System panel office tools.

1.02 When this section is reissued, the reason for reissue will be listed in this paragraph.

1.03 The information contained in this section supersedes the corresponding information in Sections 074-110-101, 074-112-101, 074-116-101, 074-118-101, 074-122-101, 074-125-101, 074-127-101, 074-130-101, 074-134-101, 074-625-101, 074-680-101, 074-750-101, 074-760-102, 074-775-101, 074-785-101, 074-800-101, and 074-890-101.

357



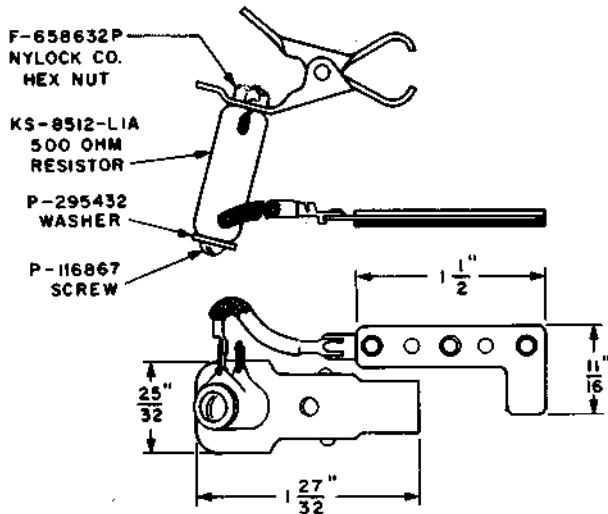
Spring contact clip and insulator. Replaces the 250 tool. For use on A- and B-type sequence switches and panel elevator apparatus.

332

MFR DISC

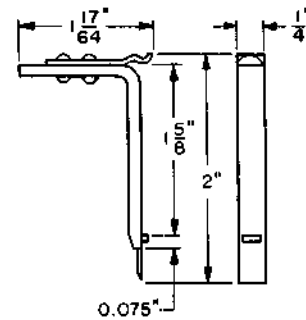
Bearing staking tool.

337



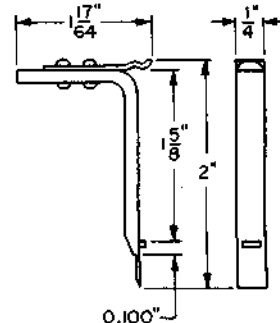
A 500-ohm grounding fixture. For use in placing a 500-ohm-to-ground connection on the ring spring of panel-type line finder multiple brushes when making service observing tests.

396A



Rack locator. For use on panel selector elevator apparatus.

404A

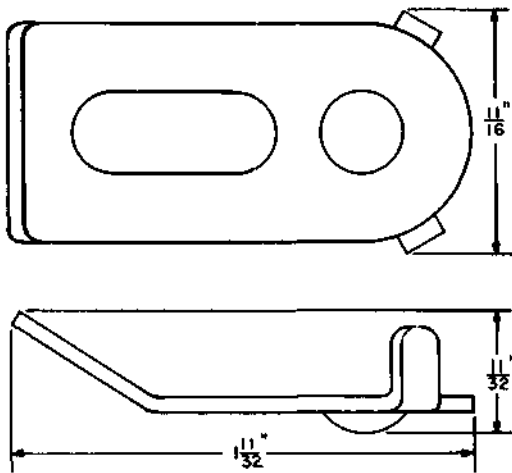


Rack locator. For use on panel tandem and cordless "B" link elevator apparatus.

NOTICE

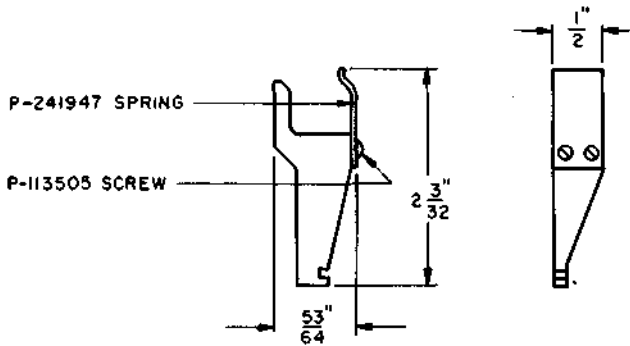
Not for use or disclosure outside the Bell System except under written agreement

427A



Shaft supporting tool. For use on vertical drive shafts.

450A



Substitute disc. Replaces substitute disc R-1648, detail 3. For use on vertical drive shafts.

499A

MFR DISC

500A

MFR DISC

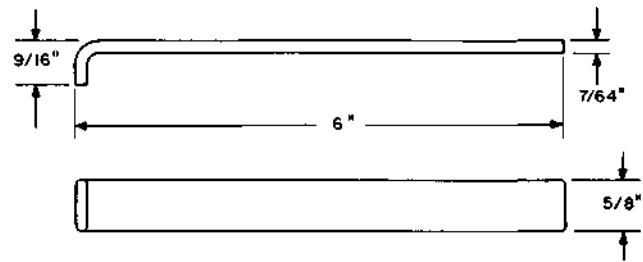
501A

MFR DISC

502A

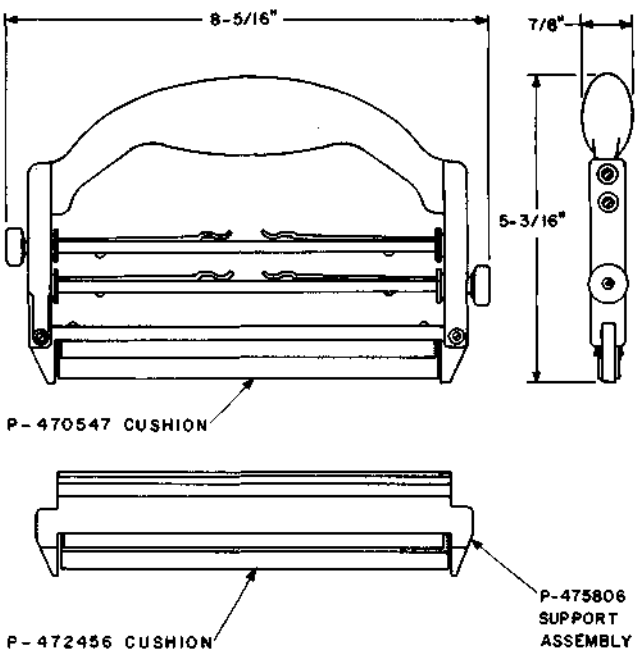
MFR DISC

521A



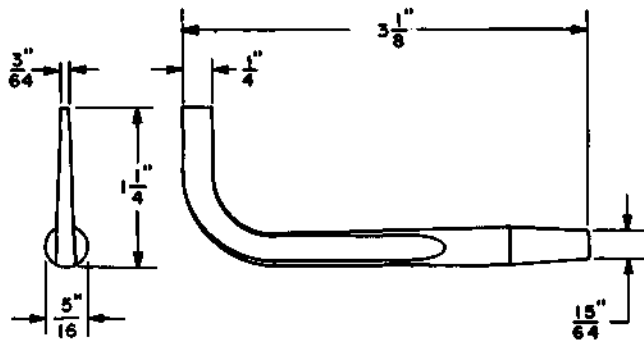
Offset screwdriver. For use on friction roll drives.

526A



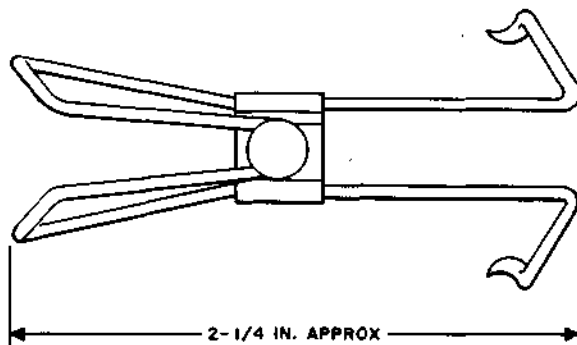
Treating tool. For holding an oiled cloth used in cleaning and treating terminals of 40- and 100-point panel banks.

562A



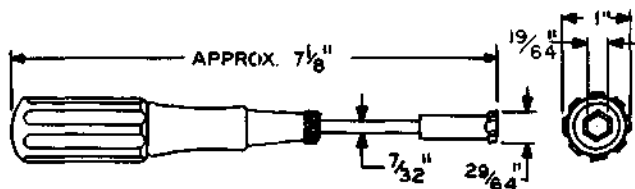
Offset tip. Used in conjunction with the 510C tool. See Lamps, Section 074-235-109, for a description of the 510C tool. For use on panel elevator apparatus.

621A



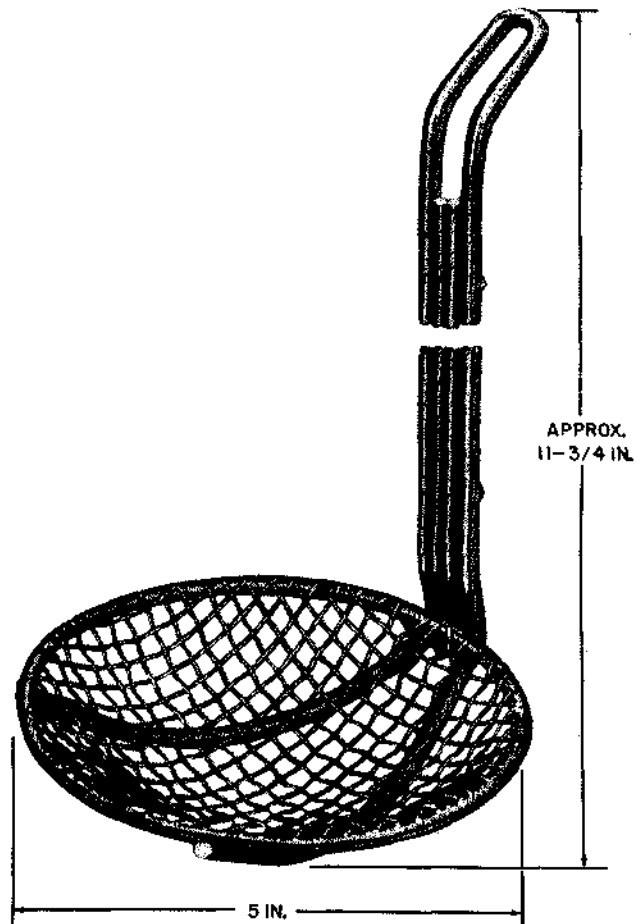
Spreader. For use in spreading panel commutator wiper pads when checking and adjusting commutator brush springs.

KS-6263



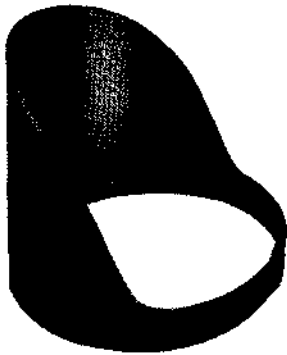
A 19/64-inch screwdriver-handle hex. socket wrench. For use on panel vertical drive shaft couplings and sequence switches. Replaces the KS-6079 wrench.

KS-16917 L1



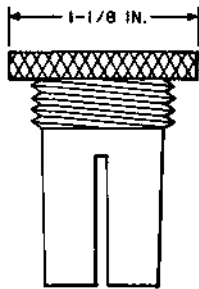
Stirrer. For use in stirring KS-16885 L2 contact protectant compound for panel multiple bank tip and ring terminals.

KS-16918 L1



Spout. For use in pouring contact protectant compound into the applicator tools used for treating tip- and ring-panel bank terminals.

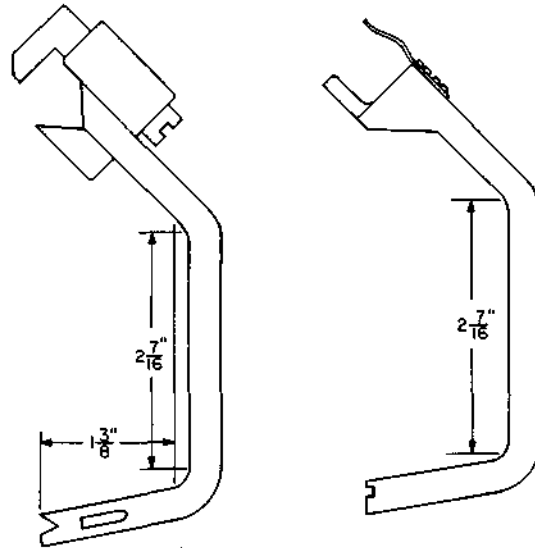
R-1026



Gear case setting tool. For use on friction roll drives.

R-2003

(Includes two Detail 2 and one Detail 3 unless otherwise specified in order.)

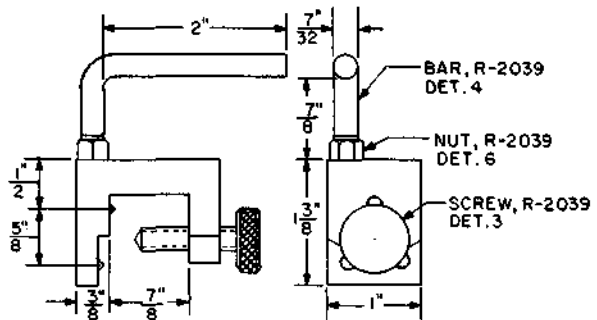


Detail 2

Detail 3

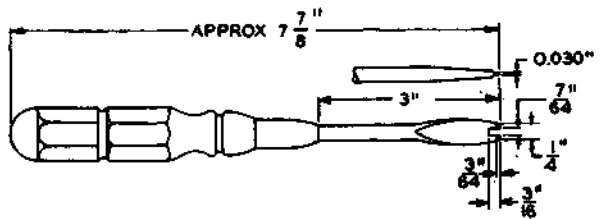
Aligning fixture. For use on vertical drive shafts.

R-2039



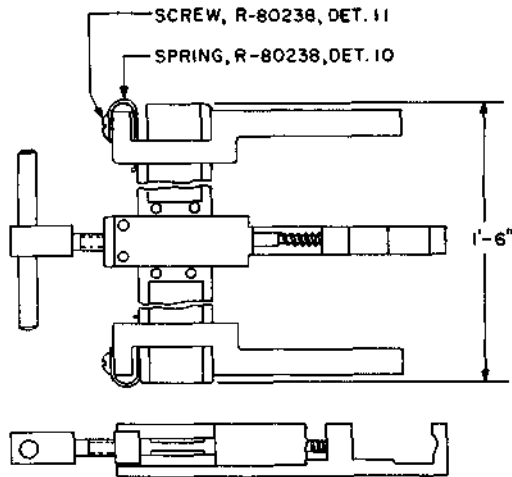
Indicator clamping fixture. For use on vertical drive shafts and associated apparatus.

R-6770



Slotted screwdriver. For use on panel multiple banks.

R-80238

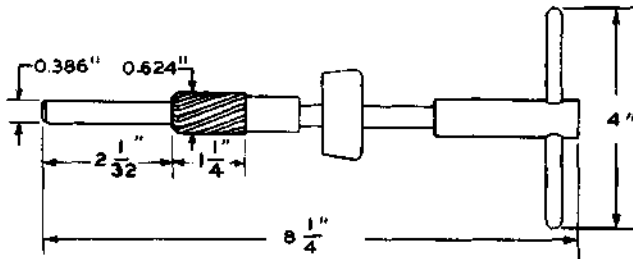


Shaft-straightening fixture. For use on vertical drive shafts and associated apparatus.

R-1648, DET. 3

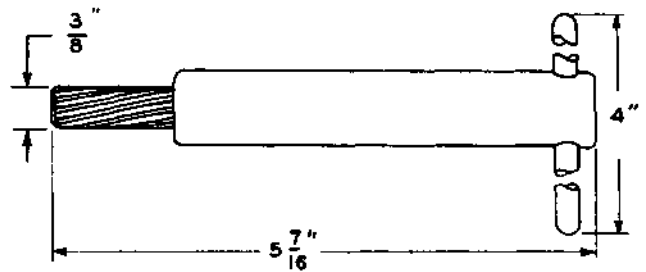
Substitute disc. Replaced by the 450A tool.

D-97083, 0.624-INCH



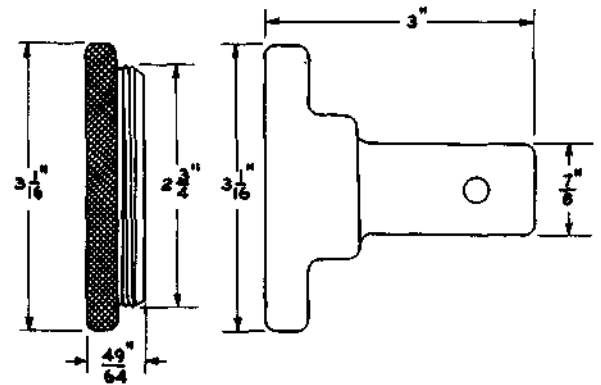
Reamer and handle. For use with the D-97084 tapered bushing in reaming bearings in worm case housings of friction roll drives to relieve overheating.

D-97085, 3/8-INCH



Reamer and handle. For use with the D-97086 guide and clamp nut for reaming housing assembly bearings of friction roll drives to relieve overheating.

D-97086



Guide and clamp nut. For use with the D-97085 reamer and handle when reaming housing assembly bearings of friction roll drives.