

S AND T KNOBS

1. GENERAL

1.01 These knobs are used as first attachments for drop wires when porcelain insulated building attachments are required.

1.02 The S knob (Fig. 1) is designed to accommodate one drop wire.

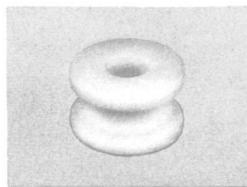


Fig. 1 - S Knob

1.03 The T knob (Fig. 2) is designed to accommodate two drop wires.

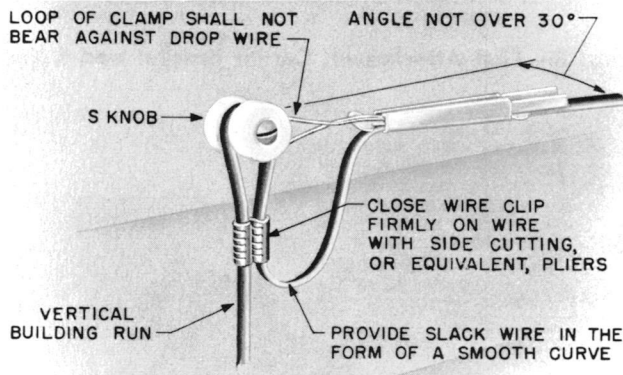


Fig. 2 - T Knob

1.04 Fig. 3, 4, 5, 6, 7, 8, and 9 illustrate various applications of the S and T knobs with angle screws, house brackets, corner brackets, and insulator supports. Additional applications are shown in the section entitled, *Drop and Block Wiring, Fastening and Equipping First Attachments for Drop Wire Runs on Buildings.*

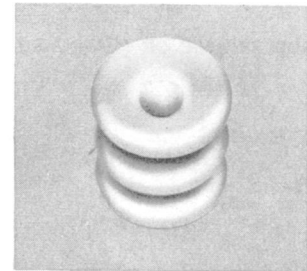
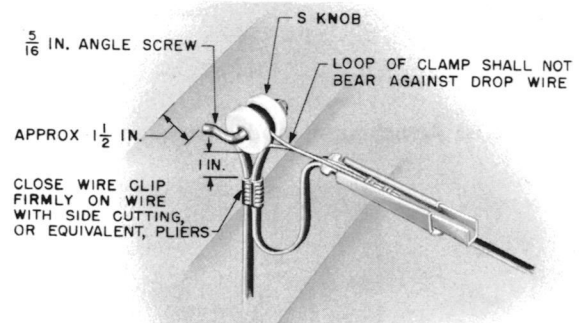


Fig. 3 - First Attachment, S Knob



NOTE: ALIGN ANGLE SCREW SO THAT PULL OF DROP WILL NOT TEND TO TURN IT.

Fig. 4 - First Attachment, Angle Screw and S Knob

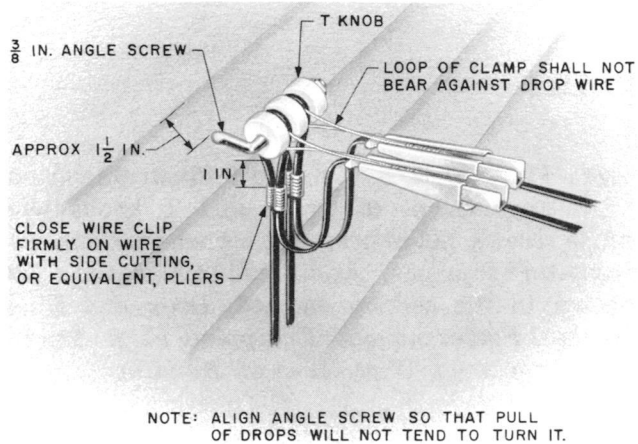


Fig. 5 — First Attachment, Angle Screw and T Knob

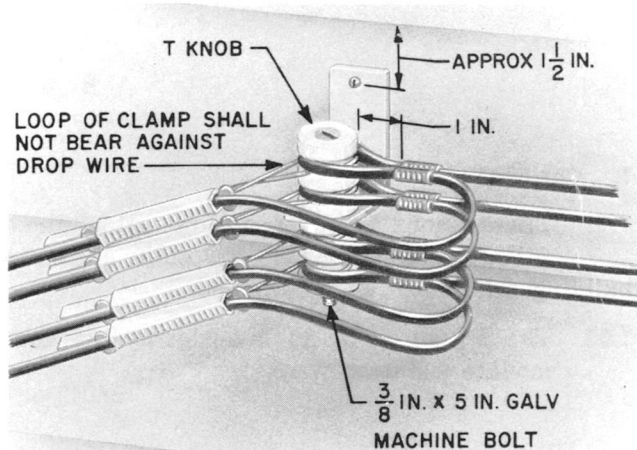


Fig. 7 — First Attachment, House Bracket and T Knobs

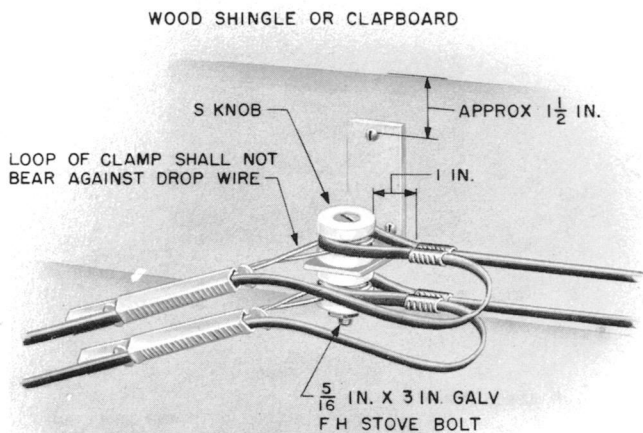


Fig. 6 — First Attachment, House Bracket and S Knobs

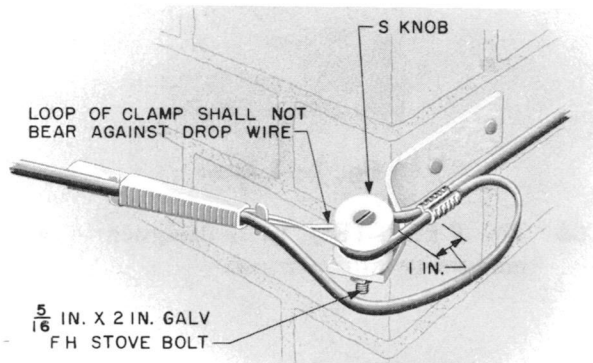


Fig. 8 — First Attachment, Corner Bracket and S Knob

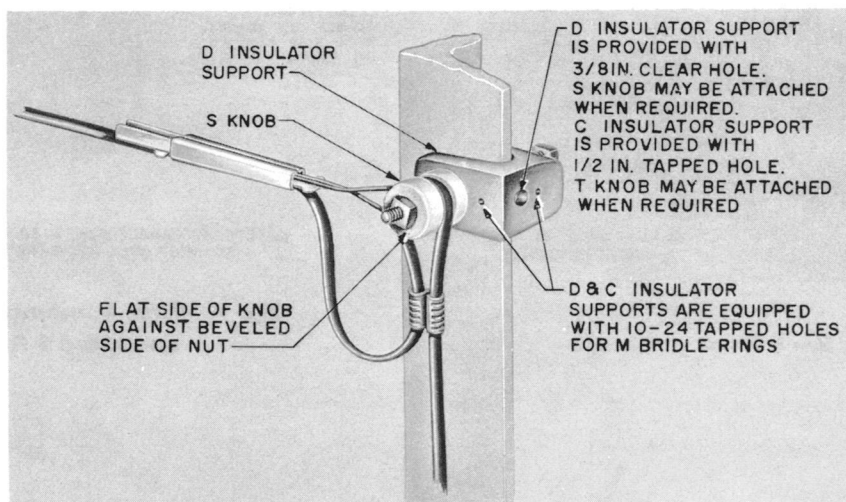


Fig. 9 — First Attachment, Insulator Support and S or T Knob