

ANGLE SCREWS

1. GENERAL

1.01 Angle screws (Fig. 1), equipped with S or T knobs, are used as first attachments for drop wires to building when:

- (a) The angle between the drop wire and the wall is 30 degrees or more.
- (b) Porcelain insulated building attachments are required.

1.02 These screws are furnished in two sizes, designated 5/16-inch and 3/8-inch.

1.03 The 5/16-inch angle screw is used with the S knob (Fig. 2).

1.04 The 3/8-inch angle screw is used with the T knob (Fig. 3).

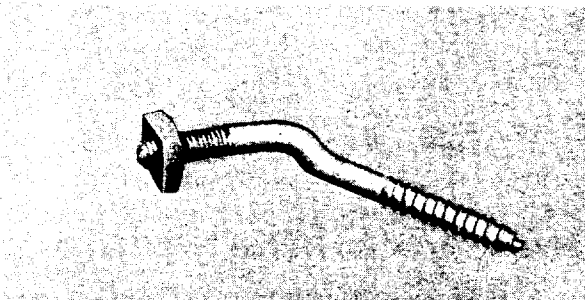
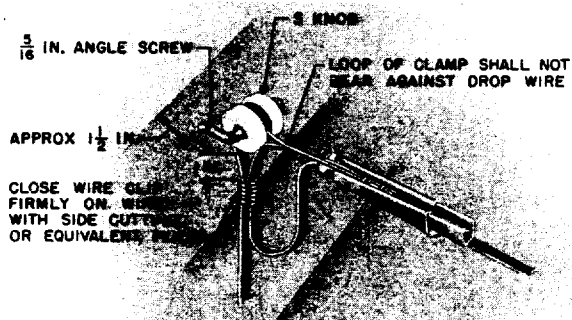
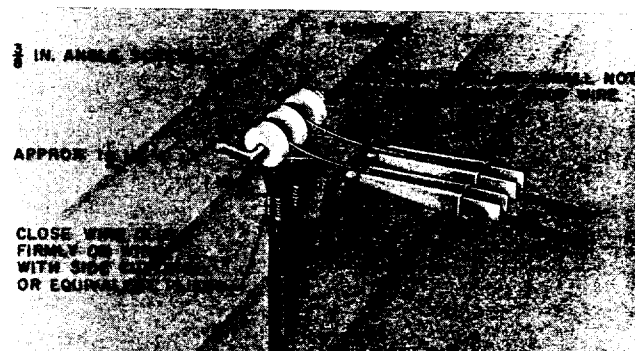


Fig. 1 — Angle Screw



NOTE: ALIGN ANGLE SCREW SO THAT PULL OF DROP WILL NOT TEND TO TURN IT.

Fig. 2 — 5/16-Inch Angle Screw Equipped with T Knob



NOTE: ALIGN ANGLE SCREW SO THAT PULL OF DROPS WILL NOT TEND TO TURN IT.

Fig. 3 — 3/8-Inch Angle Screw Equipped with T Knob