

HOUSE BRACKET

1. GENERAL

1.01 House brackets (Fig. 1) equipped with porcelain knobs or a B wire hook are used as first attachments for drop wires to buildings.

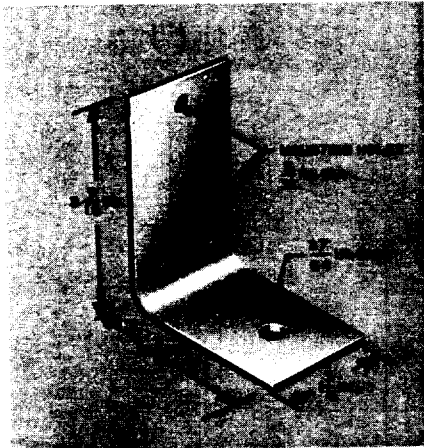


Fig. 1 - House Bracket

1.02 S and T knobs (Fig. 2 and 3) are used with the house bracket for attaching drop wires to building when:

- (a) Porcelain insulated building attachments are required.

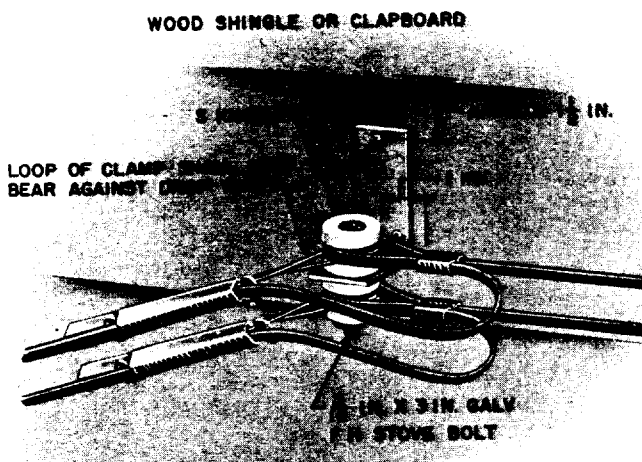


Fig. 2 - House Bracket Equipped with S Knob

- (b) Two or more drops are to be attached (Fig. 3).

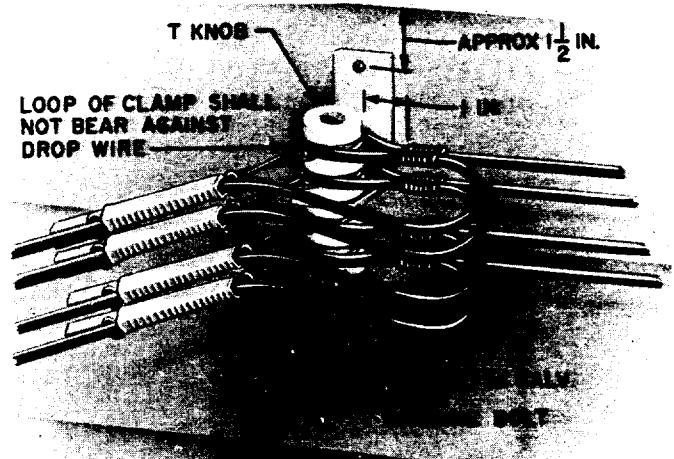


Fig. 3 - House Bracket Equipped with T Knob

1.03 Drop wire hooks are used with the house bracket when:

- (a) Porcelain insulated building attachments are not required.
- (b) Two or fewer drop wires are to be attached (Fig. 4).

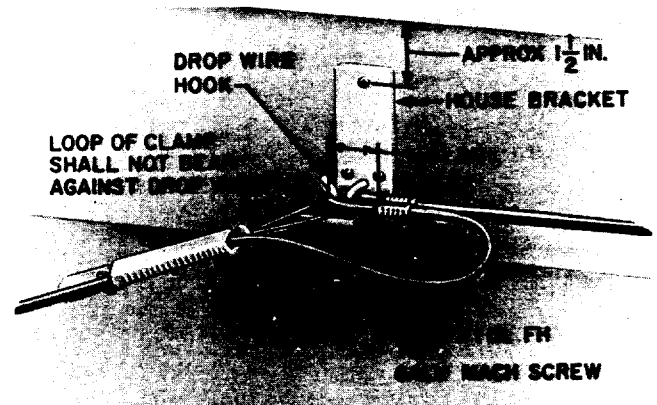


Fig. 4 - House Bracket Equipped with Drop Wire Hook