

B, K, AND M BRIDLE RINGS DESCRIPTION

1. GENERAL

1.01 The B, K, and M bridle rings are intended for use with B, C, and D insulator supports and B beam clips to support wires and cable from structural steel framework.

1.02 This section is reissued to change:

- (a) Titles of Fig. 1 and 2 for clarity
- (b) Section title to include description.

Since this reissue is a general revision, no revision arrows have been used to denote significant changes.

1.03 The B bridle ring (Fig. 1) is the open-eye-type which permits wires to be inserted with a wire-raising tool. It has a galvanized finish, a 1-1/4 inch diameter opening, and a No. 10-24 threaded shank.

1.04 The K and M bridle rings (Fig. 2) are the closed-eye-type which require the wiring to be dressed through the eye opening. These bridle rings have a galvanized finish, a 3/4-inch and 1-1/4 inch diameter opening, respectively, and a No. 10-24 threaded shank.

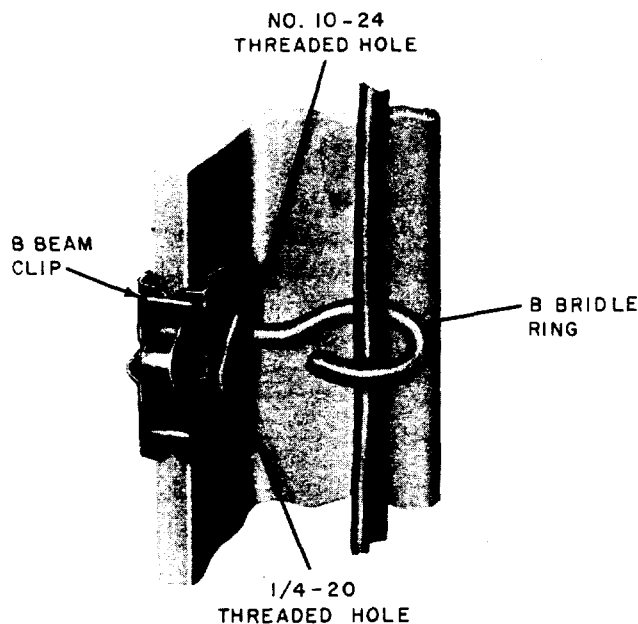


Fig. 1—Installed B Bridle Ring Using B Beam Clip

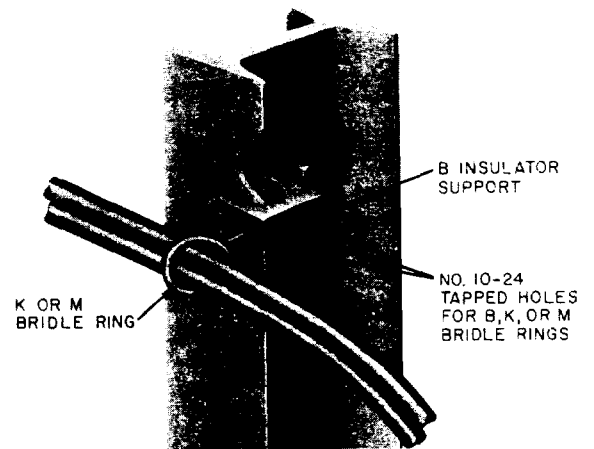
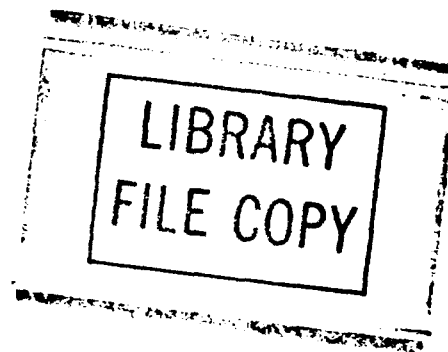


Fig. 2—Installed K or M Bridle Ring Using B Insulator Support



NOTICE

Not for use or disclosure outside the
Bell System except under written agreement