

**E1 STATUS REPORTING AND CONTROL SYSTEM
INITIAL TROUBLE DIAGNOSES
CENTRAL STATION**

This section contains, in flowchart form, step-by-step procedures to be performed at an E1 Central Station to determine the nature and location of the problem(s) in the E1 equipment without the use of specialized test equipment.

Caution: The flowchart must be entered at the designated "start" block at all times. Any deviation from this will cause an erroneous troubleshooting routine.

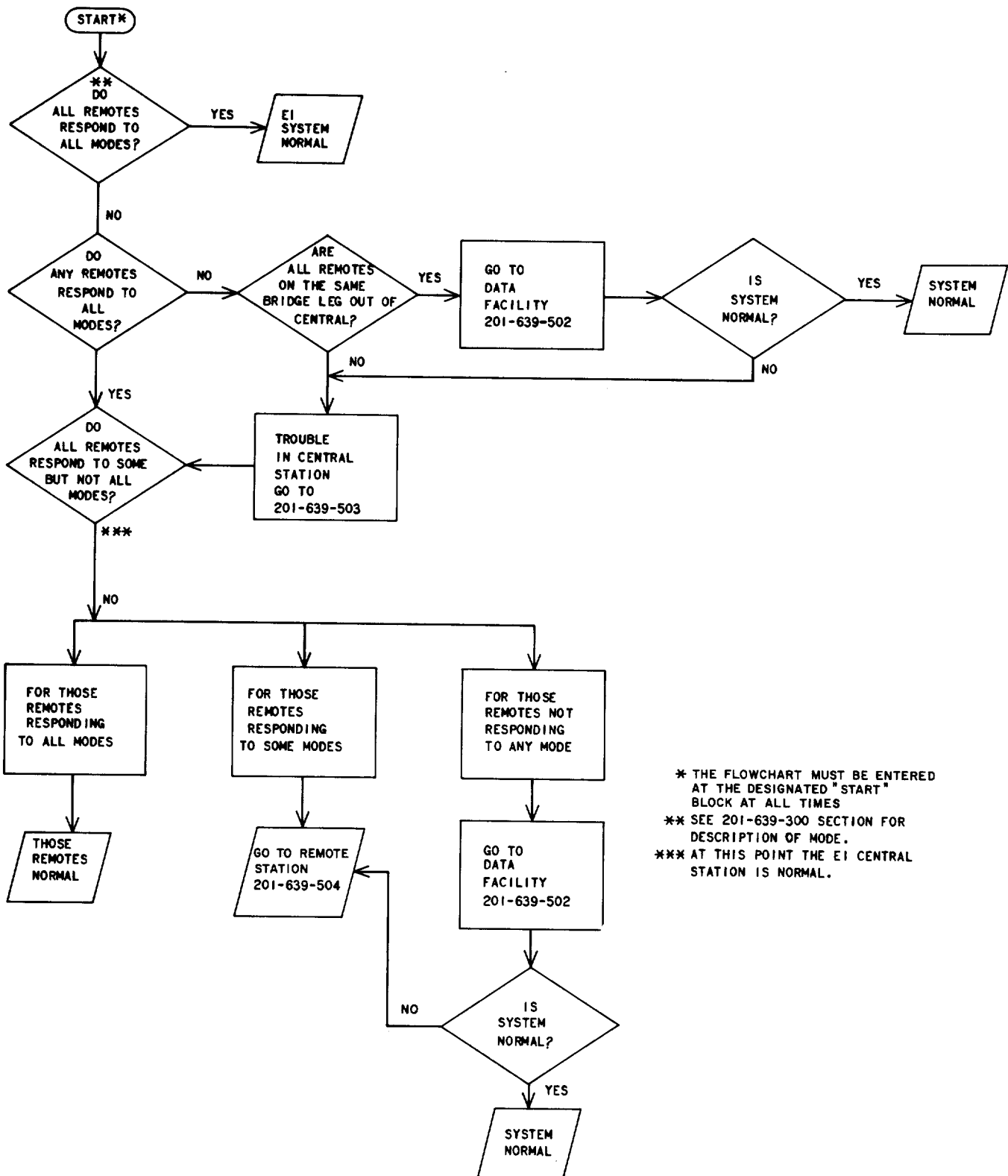


Fig. 1—Initial Diagnoses