

LINE LOAD CONTROL  
OPERATING METHODS  
NO. 1 CROSSBAR OFFICES

1. GENERAL

1.001 This addendum supplements Section 216-020-610.

1.002 It is issued to:

- Add Forms P 3436 and P 2406
- Include a Line Load Control flowchart.

4. RECOGNIZING ORIGINATING OVERLOADS

The following changes apply to Part 4 of the section:

- 4.01 (g) — added
- Exhibit — added

4.01 (g) Form P 3436, Line Load Control (Exhibit 1), should be located at each line load control cabinet. It should be reviewed and posted quarterly. The maintenance supervisor will compute the

discharge amperage equivalent to 30% above the current peak load. The switching administrator will supply the number of line link frames with calls waiting which would suggest the need for line load control. Unless more reliable data is available, this number should be about 75% of the total installed line link frames.

8. RECORDS AND REPORTS

The following changes apply to Part 8 of the section:

- 8.01 — revised
- Chart A — added
- Exhibit 2 — added

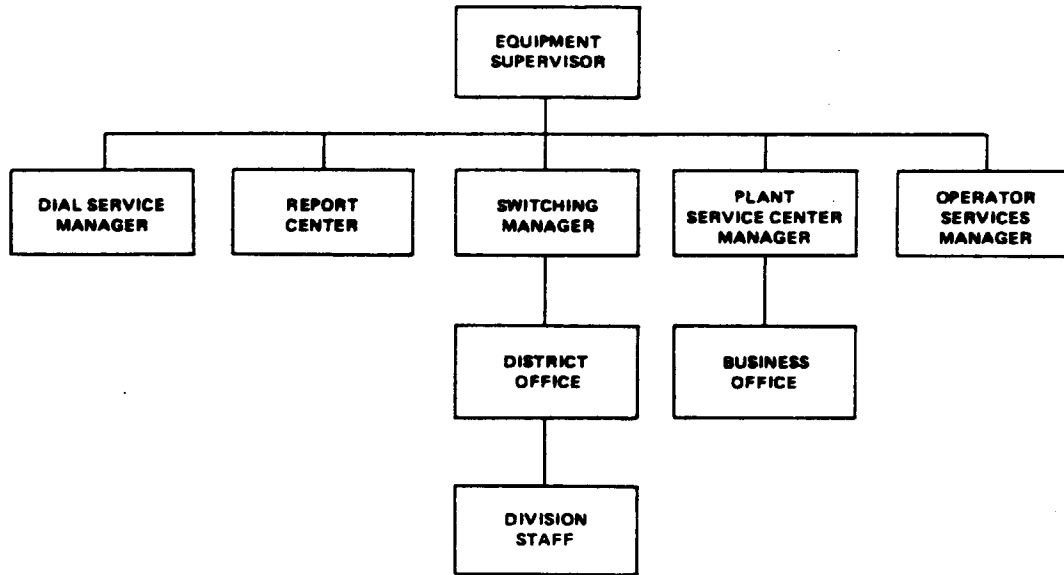
8.01 The required reports of the use of line load control should be entered on Form P 2406, Line Load Control Circuit Operations (Exhibit 2). These reports should include the date, time, and reason for line load control activity, as well as the duration of the abnormal condition. Report the use of line load control through lines of organization, as indicated on the flowchart (Chart A).

NOTICE

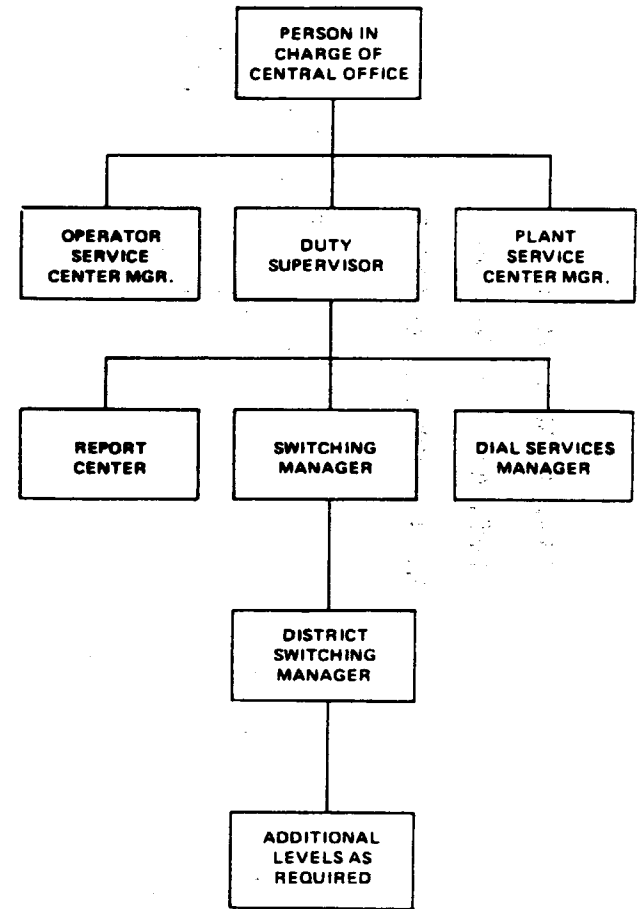
Not for use or disclosure outside the  
Bell System except under written agreement

# CHART A LINE LOAD CONTROL

## DURING BUSINESS HOURS



## OUTSIDE BUSINESS HOURS



NOTE: BYPASS ANY LEVEL OF MANAGEMENT WHO IS UNAVAILABLE.



**LINE LOAD CONTROL  
NO. 1 CROSSBAR**

P 3436  
(216-020-610PT)

**CONDITIONS FOR USE**

- Civil Defense actions
- Public disasters or unusual incidents
- Events such as news reports, advertising, etc.

**ORIGINATING OVERLOAD INDICATIONS**

- Large number of stuck senders and/or partial dials
- All originating markers busy alarm
- Originating marker connector time alarms
- Calls waiting condition on line link frames
- Large number of permanent signals
- Heavy battery drain indicated by the office load meter

**MAJOR OVERLOAD INDICATOR LEVELS**

Battery Discharge	Calls Waiting	Dates Levels Reviewed		
Amps	LLF's	_____	_____	_____
30% Overload	(red) G Lamps	_____	_____	_____
		_____	_____	_____
		_____	_____	_____

**CAUTION:** Before applying line load control, become familiar with BSP 216-020-610PT and applicable emergency instructions.

(Post at Line Load Control Cabinet)

**Exhibit 1**

