

ESS-4486 EMERGENCY ZERO LEVEL INTERCEPTING SET
FOR SMALL DIAL OFFICES
CONNECTION AND OPERATION

1. GENERAL

1.01 This section tells how to connect and operate the EES-4486 portable Emergency "O" Level Intercept set in unattended dial offices. This set is used to intercept calls to the operator during emergencies, i.e., trunk cable failures, carrier failures, etc.

1.02 It is reissued to renumber and update the practice. Arrows are omitted.

1.03 The EES-4486 set may be used to:

(a) Terminate an order wire and nine circuits for intercepting calls to the "O" level.

(b) Terminate ten circuits for intercepting calls to the "O" level when the order wire is not used or available.

1.04 Before connecting, check the "O" level trunks so each selector shelf will have access to the set. Busy out trunks that cannot be connected to the set.

1.05 The set is equipped with jacks for connecting an operator's telephone set. Lamps are provided to indicate incoming calls to each circuit. Five 2-position keys allow an operator to answer any circuit. Out going calls cannot be made except on the order wire.

1.06 Traffic will notify the District Plant Manager when the set is required. He will make arrangements for the transportation and installation of the set. Plant forces will operate the set until Traffic personnel arrive.

1.07 Five emergency sets are at these offices:

- El Centro
- Escondido
- Riverside-Orange
- San Diego - "C" Street
- Santa Ana - 5th Street

1.08 Before lifting any jumper, monitor the trunk to make certain that a conversation is not interrupted.

2. APPARATUS

2.01 Emergency zero level intercepting set EES-4486.

2.02 Operator's telephone set.

2.03 One of the following test sets:

SKS-1561
SD-31859-01
SD-31858-01

(One of these sets is available in each of the offices where employment of the EES-4486 set is contemplated.)

2.04 Two 3W3A cords or equivalent.

2.05 Toothpick (for blocking J relay, see 3.08).

3. CONNECTING

3.01 Locate the test set and the intercepting set near the C.D.F.

3.02 Connect battery and ground to the intercepting set.

3.03 Connect the operator's telephone set to the telephone jack of the intercepting set.

Intercepting Service

3.04 Lift the C.D.F. jumper between the selector level to be intercepted and the trunk circuit, at the trunk circuit end. Connect the T, R, and S clips of the cable connected to the intercepting set to the T, R, and S conductors of the jumper.

Order Wire

3.05 Select a trunk that is in serviceable condition. Lift the C.D.F. jumper between the selector level and the trunk circuit selected, at the trunk circuit end.

SECTION 226-199-900PT

3.06 The selector level end of the trunk selected for use as an order wire may be intercepted as described above or made busy by grounding the sleeve conductor of the jumper.

3.07 Make connections as shown in Figures 1, 2, or 3 depending on the test set and trunk circuit in the office involved.

3.08 Block operated the J relay of trunk circuit WS-1110 or WS-1173 that is to be used for the order wire.

4. OPERATING METHOD

Intercepting Service

4.01 Incoming calls will light the lamps associated with the intercepted trunks.

4.02 When a lamp lights, operate the key associated with the lamp. This will connect the operator's telephone set to the trunk.

4.03 When the call has been handled and the subscriber has hung up, release the key and the equipment will restore to normal.

Order Wire Service

4.04 Community Dial Offices with Test Set SKS-1561 and Trunk Circuit WS-1110 or WS-1173 (Fig. 1).

(a) Operate the TRS key of the test set and the talking key of the intercepting set.

(b) Operate the REV-CALL key of the test set. Ringing induction should be heard. When the operator answers, the ringing will be tripped.

(c) To disconnect, release the REV-CALL key. To flash the operator, release and reoperate the REV-CALL key.

4.05 Community Dial Offices with Test Set SKS-1561 and Trunk Circuit ES-30416-01 (Fig. 2).

(a) Operate the talking key of the intercepting set and the TRS key of the test set.

(b) Operate the REV-CALL key of the test set. Ringing induction should be heard. When the operator answers, the ringing should be tripped.

(c) To disconnect, release the REV-CALL key. To flash, release and reoperate the REV-CALL key.

4.06 355 Offices with Test Set SD-31858-01 or SD-31859-01 and Trunk Circuit SD-31874-01, SD-31753-01, SD-31751-01, or SD-31749-01 (Fig. 3).

(a) Operate the talking key of the intercepting set and the TR key of the test set. If using Test Set SD-31859-01, operate the REV-CALL key also.

(b) Operate the (RC) key of the test set. Ringing induction should be heard. When the operator answers, the ringing will be tripped.

(c) To disconnect, release the RC key of the test set. To flash operator, release and reoperate the (RC) key.

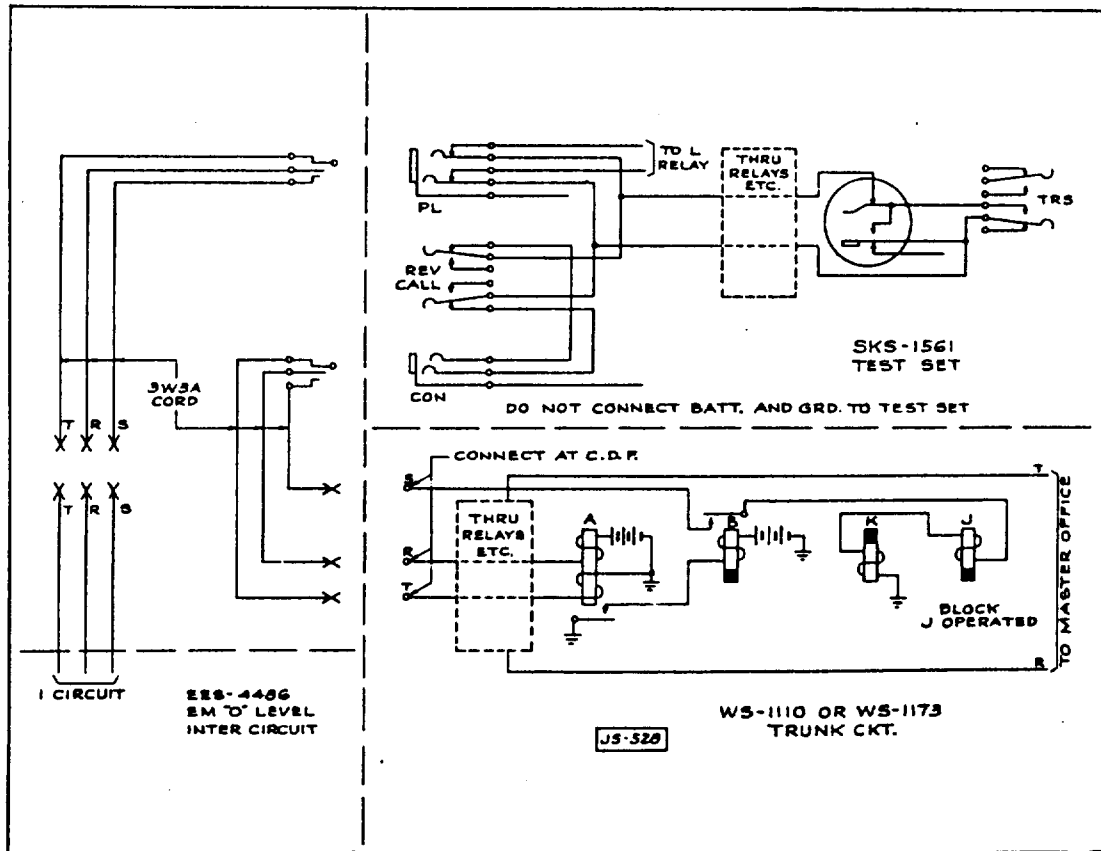


Fig. 1

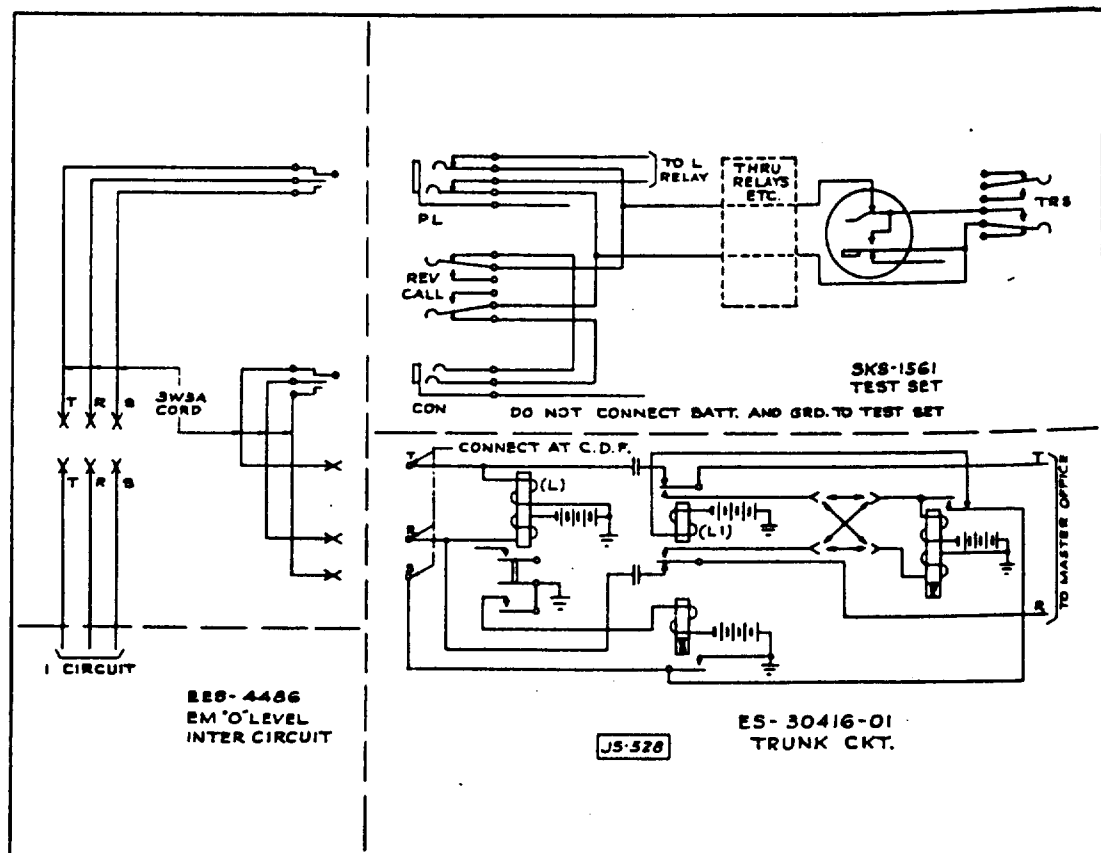


Fig. 2

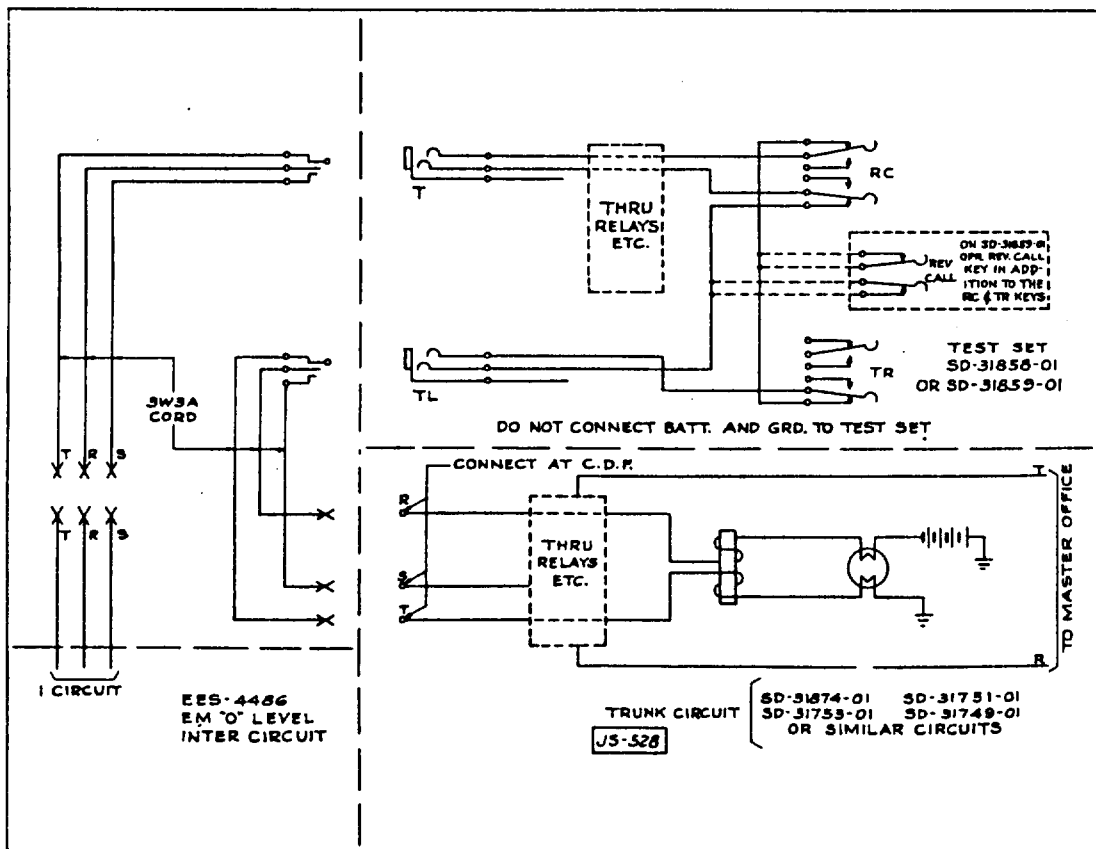


Fig. 3