

EQUIPMENT CABINETS AND APPARATUS MOUNTINGS IDENTIFICATION

	CONTENTS	PAGE		CONTENTS	PAGE
1.	GENERAL	2	5.	BACKBOARDS AND BASES	14
2.	APPARATUS BOXES	2	A.	173-Type Backboard	14
A.	105-Type Apparatus Box	2	B.	177A Backboard	15
B.	115-Type Apparatus Box	4	C.	KS-5796 Type Backboard	16
3.	APPARATUS MOUNTINGS	4	D.	ED-69368-50 Backboard	16
A.	15A Apparatus Mounting	4	E.	ED-91180-70 Base	17
B.	16-Type Apparatus Mounting	4	F.	ED-91472-70 Base	17
C.	26A Apparatus Mounting	7	6.	FLOOR STANDS	18
D.	31-Type Apparatus Mounting	7	A.	ED-69462-50 Floor Stand	18
E.	77-Type Apparatus Mounting	8	B.	ED-91296-70 Floor Stand	18
4.	EQUIPMENT CABINETS	10	C.	ED-95023-70 Floor Stand	19
A.	ED-69366-50 Cabinet	10	7.	WALL RACKS	20
B.	ED-69488-50 Cabinet	11		ED-69463-50 Wall Racks	20
C.	ED-69489-50 Cabinet	11	8.	COVERS	21
D.	ED-91180-70 Cabinet	11	A.	116A Cover	21
E.	ED-91194-70 Cabinet	11	B.	117-Type Cover	22
F.	ED-91472-70 Cabinet	11	C.	154-Type Cover	22
G.	ED-91981-70 Cabinet	12	D.	ED-69368-50 Cover	22
H.	ED-92185-70 Cabinet	12	E.	ED-69462-50 Cover	23
I.	34-Type Cabinet	13	F.	ED-69463-50 Cover	23
J.	50A Cabinet	13	9.	TERMINAL PLATE AND WALL BOX	24

NOTICE

Not for use or disclosure outside the
Bell System except under written agreement

	CONTENTS	PAGE
A.	ED-69366-50 Terminal Plate Assembly	25
B.	ED-69391-50 Terminal Wall Box	26
10.	ADAPTERS, BRACKETS, AND MOUNTING BARS	27
	ADAPTERS	27
A.	262A Adapter	27
B.	813622099 (P-36B209) Adapter	27
	BRACKETS	28
A.	67-Type Bracket	28
B.	813722048 (P-37B204) Bracket	29
C.	ED-69366-50 Bracket	29
	MOUNTING BARS	30
A.	811238245 (P-12C824) Mounting Bar	30
B.	813538733 (P-35C873) Mounting Bar	30
C.	ED-69143-70 Mounting Bar	31

1. GENERAL

1.01 This section covers the identification of apparatus boxes, equipment cabinets, apparatus mountings, and associated hardware.

1.02 This section is reissued to add information on the 34C, 34D, and 50A cabinets and the 117C, 154A, and 154B covers.

1.03 Some items in this section are available in different specifications. These are shown as group numbers added to the ED number on drawings or in supplies catalogs. Footnotes are provided throughout this section to draw attention to this. Refer to ED drawings or supplies catalogs for different specifications that are desired.

1.04 Table A lists mounting plate and key telephone unit mounting information for certain apparatus mountings and cabinets.

2. APPARATUS BOXES

A. 105-Type Apparatus Box

2.01 The 105-type apparatus box (Fig. 1) is a metal base with a cover designed to mount four single- or two double-space angle-bracket type key telephone units (KTUs). Two fanning rings are furnished with each box.

2.02 The fiber dust-sealing guard has been replaced by a single piece 813080025 (P-30H002) plastic dust guard. Two dust guards are shipped with each 105-type apparatus box and will slip into the cable entrance openings in the top and bottom of the cover to minimize dust seepage. The plastic dust guard can be cut to fit around entering wires or cables as necessary.

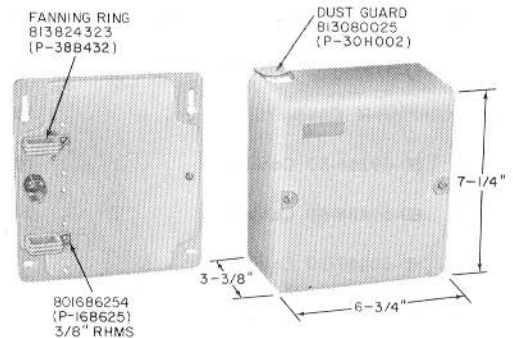


Fig. 1—105-Type Apparatus Box

TABLE A

APPARATUS	WILL ACCOMMODATE							
	MOUNTING PLATES				KTU TYPE			
	WIDTH (INCHES)		LENGTH (INCHES)					
	1-3/4	2	19	23	ANGLE BRACKET	STRIP	PANEL*	PLUG-IN
QUANTITY		19	23	ANGLE BRACKET	STRIP	PANEL*	PLUG-IN	
105-Type Apparatus Box					•			
15A Apparatus Mounting					• Note 1		•	
31A Apparatus Mounting					• Note 1		•	
31B Apparatus Mounting					• Note 1		•	
16A Apparatus Mounting	6 Note 1	6	• Note 1	•	• Note 1	• Note 1	•	•
16C Apparatus Mounting	6 Note 1	6	• Note 1	•	• Note 1	• Note 1	•	•
26A Apparatus Mounting	12 Note 1	13†	•	•	• Note 1	• Note 1	•	
4-Plate Equipment Cabinet per 91472-70‡	4		•		• Note 1	•		
11-Plate Apparatus Cabinet per ED-91194-01‡	11	9	• Note 2	•	• Note 1	• Note 2	• Note 2	•
18-Plate Apparatus Cabinet per ED-91180-01‡	18	15	• Note 2	•	• Note 1	• Note 2	• Note 2	•
26-Plate Apparatus Cabinet per ED-92185-01‡	26	23	• Note 2	•	• Note 1	• Note 2	• Note 2	•
45-Plate Apparatus Cabinet per ED-91981-01‡	45	40	• Note 2	•	• Note 1	• Note 2	• Note 2	
Wall Relay Rack per ED-69463-50‡	40 Note 1	34 Note 1	• Note 1	• Note 1	• Note 1	• Note 1	• Note 1	•
Floor-Supported Cabinet per ED-69366-50 Group 1	Two 26A Apparatus Mountings on Roller Slides.							
Floor Stand per ED-69462-50 Group 1	Mounting for one 177A backboard or 300-type key service unit.							
Floor-Supported Cabinet per ED-69488-50 Group 1	One 26A Apparatus Mounting on Roller Slide.							
Floor-Supported Cabinet per ED-69489-50 Group 1	Two 26A Apparatus Mountings on Roller Slide.							

Note 1: Requires adapter, mounting bars, or group number.

Note 2: Depending on group number, may require adapter(s).

* See SD-69288-0101 for the mounting space required for different sizes of 200-type key telephone units.

† By removing three bars.

‡ Before ordering see ED drawing or, where available, catalog of supplies for appropriate group number.

B. 115-Type Apparatus Box

2.03 The 115-type apparatus box (Fig. 2) is intended for use as a terminating and distributing point in buildings. It is equipped with a snap-on cover, distributing ring(s), and screws for mounting 66-type connecting blocks which must be ordered separately. For further information on the 115-type apparatus box, refer to Sections 461-604-101, 461-604-102, and 463-121-115.

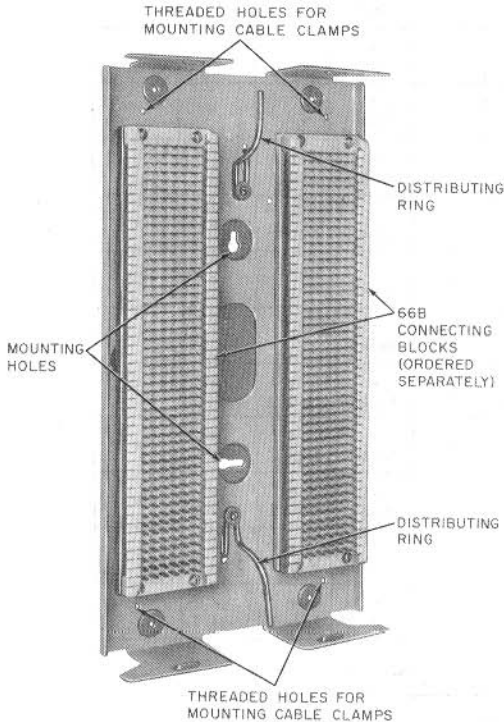


Fig. 2—Typical 115-Type Apparatus Box With Distributing Rings and Connecting Blocks Installed

3. APPARATUS MOUNTINGS

A. 15A Apparatus Mounting

3.01 The 15A apparatus mounting (Fig. 3) is a hinged metal framework primarily used to

mount panel-type 200-series KTUs. It can also be used to mount angle bracket KTUs using 813722048 (P-37B204) brackets which must be ordered separately. The apparatus mounting is furnished with an 811910058 (P-19A005) catch and screws for fastening the catch and the apparatus mounting to a 173A backboard. One or two mountings on a backboard can be covered with a 116A cover. The apparatus mounting can be arranged to hinge on either the left or right side.

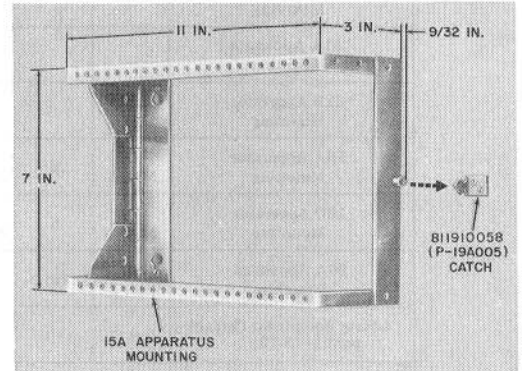


Fig. 3—15A Apparatus Mounting

B. 16-Type Apparatus Mounting

3.02 The 16A (MD) apparatus mounting (Fig. 4) is a hinged metal framework plus backboard used primarily for panel-type 200-series KTUs. It has twice the capacity of the 31A (MD) or 31B apparatus mounting and can be wall-mounted or floor-supported (using ED-95023-70 metal stand). For attaching the hinged gate of the 16A (MD) apparatus mounting to a metal backboard, use the D-179863 kit assembly. This kit consists of a die-cast aluminum backboard as used with the 16C apparatus mounting, a U-channel detail, and two 66B1-25 connecting blocks.

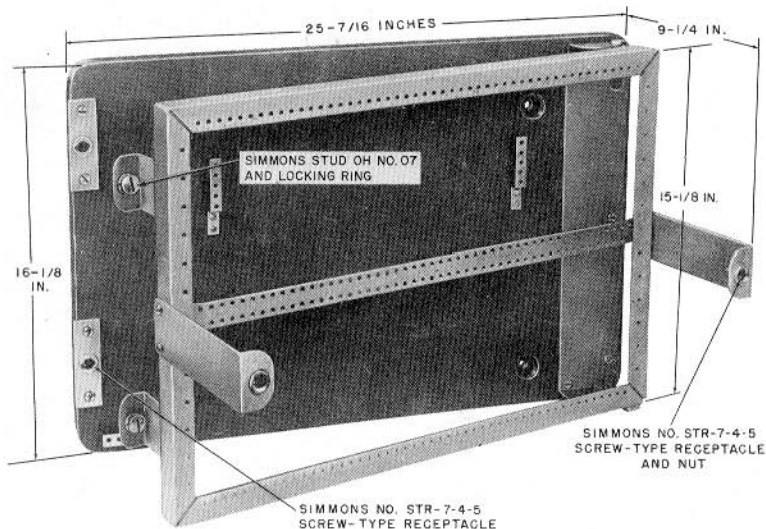


Fig. 4—16A (MD) Apparatus Mounting

3.03 The 16C apparatus mounting (Fig. 5) is a hinged metal framework comparable to the 16A apparatus mounting. The molded fiberglass backboard is drilled to handle 66-type connecting blocks. On mountings manufactured after July 1973, the mounting key holes are slotted at both ends and a second cable entry hole has been added to allow the apparatus to be mounted with the gate hinges at either left or right. Cable rings should be installed in the apparatus mounting after deciding which edge is top and bottom. The 16C apparatus mounting is primarily intended to mount 200-series KTUs but can also be used for the following:

- Angle bracket KTUs using 813722048 (P-37B204) brackets.
- 19- or 23-inch mounting plate. The 19-inch plates require 813622099 (P-36B209) adapters.
- 69-type apparatus mountings (Fig. 6), or 601A, 602A, or 603A panel on 99-type brackets.

- 583-, 584-, 597-, or 598-type panel.

Note: Mounting three 584-type panels in a 16C apparatus mounting is not recommended. The center 584 panel is restricted due to the cover support brackets interfering with the KTUs in the first and last positions of the panel. However, if the cover and cover support brackets are not needed and can be left off, the center panel can be used. If they are needed, the first line KTU cannot be used or a 412 KTU inserted or removed without removing the 13th line KTU.

The 99-type bracket consists of two 23-inch bars which mount on the 16C apparatus mounting frame. The upper bar has cable supports to retain the connector cables. All brackets or adapters must be separately ordered.

SECTION 463-140-100

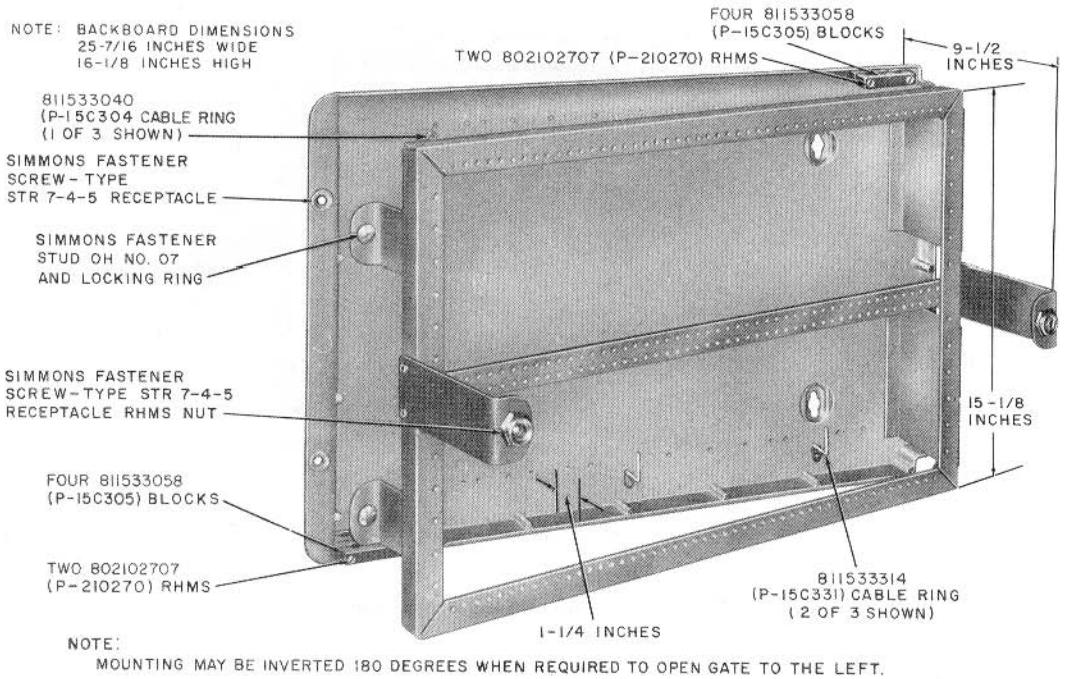


Fig. 5—16C Apparatus Mounting

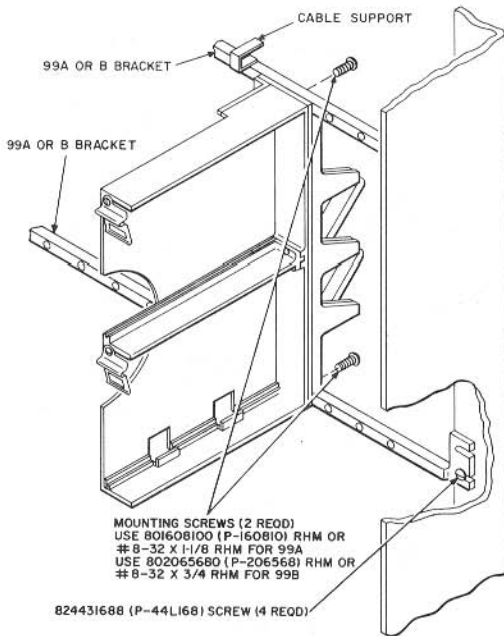


Fig. 6—69-Type Apparatus Mounting on a 99-Type Bracket

C. 26A Apparatus Mounting

3.04 The 26A apparatus mounting (Fig. 7) is a metal framework primarily used for panel-type 200-series KTUs. It is approximately twice the size of the 16-type apparatus mountings. The 26A may be mounted as follows:

- On 23-inch relay racks
- In 18-plate (with gate handle removed) or 45-plate apparatus cabinets
- In ED-69366-50, Group 1 floor-supported cabinet (using ED-69366-50, Group 2 bracket assembly)
- Directly to the floor when equipped with an ED-69366-50, Group 2 bracket assembly
- On an ED-69368-50, Group 1 or Group 3 backboard (may be enclosed with an ED-69368-50, Group 2 cover).

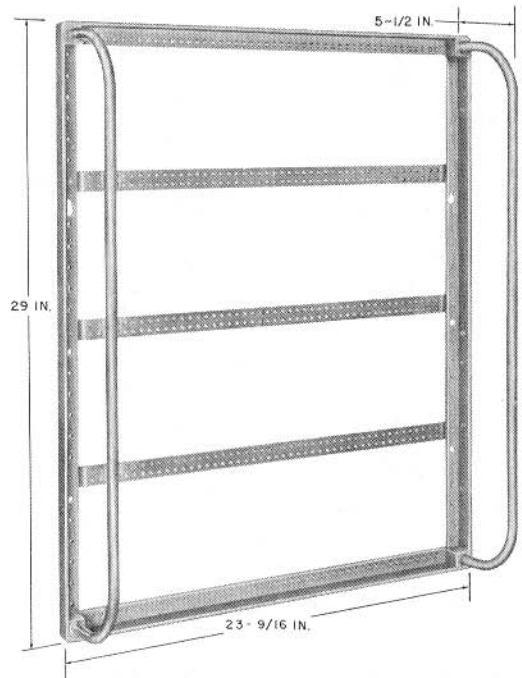


Fig. 7—26A Apparatus Mounting

D. 31-Type Apparatus Mounting

3.05 The 31A (MD) apparatus mounting (Fig. 8) is a hinged metal framework approximately twice the size of a 15A apparatus mounting. It is primarily used to mount panel-type 200-series KTUs, mounts on a 173B backboard, and may be enclosed with a 116A cover. The 31A (MD) apparatus mounting framework, less welded hinge and quick fastener details, is obtainable as an 811331131 (P-13C113) frame assembly and may be mounted singly or in pairs on 23-inch span frames with the aid of two 813538733 (P-35C873) mounting bars. The 31A (MD) apparatus mounting may also be mounted on a 177A backboard by using a D-179862 kit assembly.

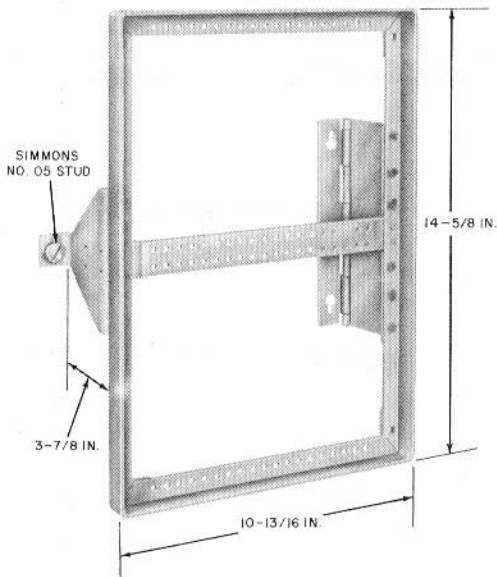


Fig. 8—31A (MD) Apparatus Mounting

3.06 The 31B apparatus mounting (Fig. 9) is a die-cast aluminum hinged framework comparable to the 31A (MD) apparatus mounting. Primarily used to mount panel-type 200-series KTUs, the 31B apparatus mounting is designed for use with the 177A backboard and can be arranged to open either to left or right. The unit can be protected with a 116A cover. The 814863056 (P-48F305) and 811533090 (P-15C309) bracket assemblies and associated fasteners must be ordered separately. (The 814863056 contains a Simmons fastener oval head stud No. 5.)

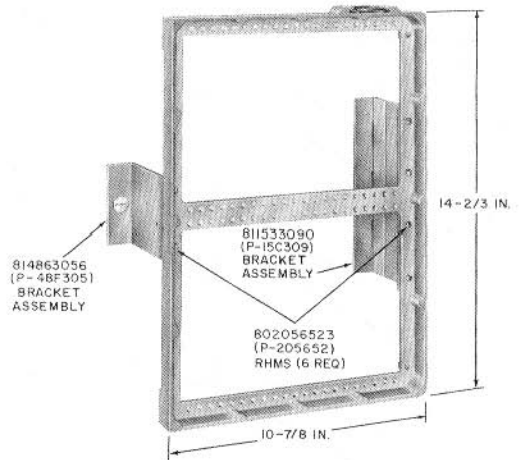


Fig. 9—31B Apparatus Mounting

E. 77-Type Apparatus Mounting

3.07 The 77B (MD) apparatus mounting is a floor-type nonanchored metal stand (preformed steel tubing) adjustable for mounting 513-, 515-, and 570-type (with 2-piece backboard) key service units (KSUs) when wall mounting is not available. The width is determined by how far the base legs are inserted into the spacer (Fig. 10).

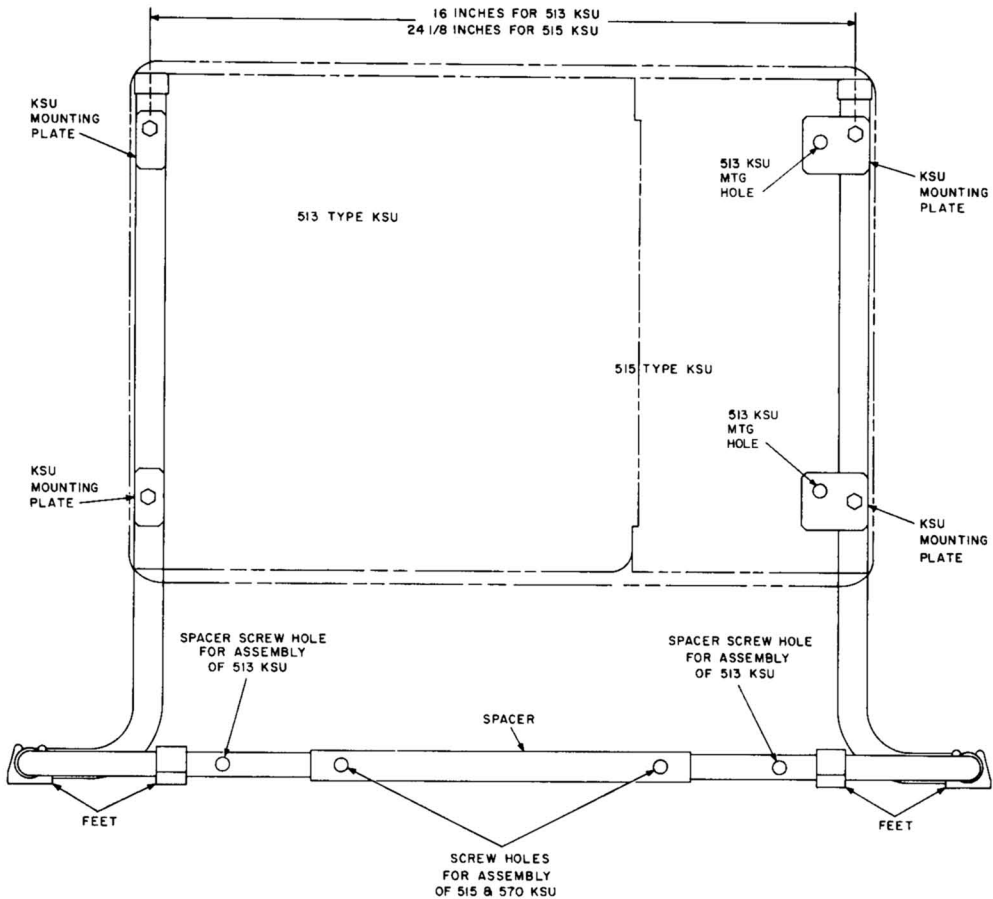
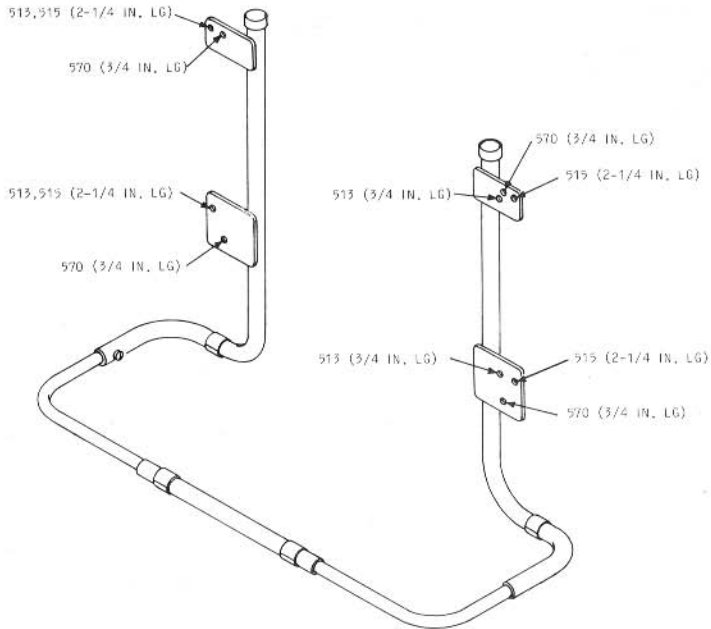


Fig. 10—77B (MD) Apparatus Mounting

3.08 The 77C apparatus mounting (Fig. 11) is similar to the 77B (MD) except the mounting plates have been enlarged to provide extra holes for mounting 570-type KSUs with one-piece backboards. The new holes will be circled in

yellow. The 77C apparatus mounting will also accept the 513- and 515-type KSUs or 570-type with 2-piece backboard. The holes used for each KSU and the length of 1/4-20 screws required are shown in Fig. 11.



NOTE:

HOLES FOR 570-TYPE KSU WITH ONE-PIECE BACKBOARD ARE CIRCLED IN YELLOW AT FACTORY.

Fig. 11—77C Apparatus Mounting

4. EQUIPMENT CABINETS

A. ED-69366-50 Cabinet

4.01 The floor-supported cabinet per ED-69366-50, Group 1 (Fig. 12) is a steel cabinet with light olive gray sides and top. Two front doors are hinged at the bottom so that, when lowered, they provide tracks upon which 26A apparatus mountings roll. The top, side, and rear panels are removable. Two ED-69366-50, Group 3 terminal plate assemblies (Fig. 39) may be mounted within the cabinet. One or two 26A apparatus mountings must be ordered separately. The ED-69366-50, Group 1 cabinet has been replaced by the ED-69489-50 cabinet.

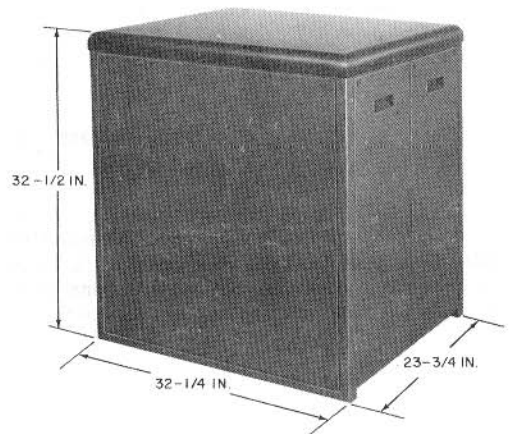


Fig. 12—Floor-Supported Cabinet per ED-69366-50, Group 1

B. ED-69488-50 Cabinet

4.02 The floor-supported cabinet per ED-69488-50, Group 1 (Fig. 13) is a steel cabinet, light olive gray in color, designed to take one 26A apparatus mounting and ED-69366-50, Group 3 terminal plate assembly. It can be ordered with or without apparatus mounting and terminal plate assembly. The terminal plate assembly is mounted on top of the apparatus mounting. The sides and ends are removable in two halves by removing the lift-off top and releasing a spring catch on each set. This allows lowering of hinged tracks on which the apparatus mounting rolls. Approximately 30 inches of clear space in front of the cabinet are required to allow complete lowering of track. Provision is made for floor mounting when required.

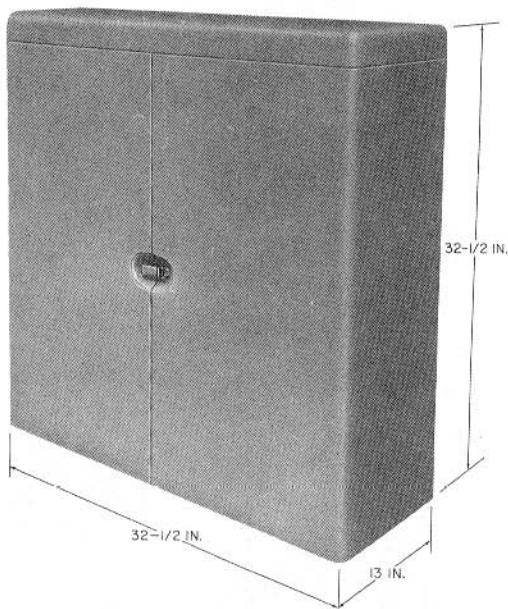


Fig. 13—Floor-Supported Cabinet per ED-69488-50, Group 1

C. ED-69489-50 Cabinet

4.03 The floor-supported cabinet per ED-69489-50, Group 1 is similar to the ED-69488-50 except

that it has a capacity of two 26A apparatus mountings, two terminal plate assemblies, and is 24-3/8 inches wide.

D. ED-91180-70 Cabinet

4.04 The 18-plate equipment cabinet per ED-91180-70* (Fig. 14) is a metal cabinet with a lift-off cover and hinged gate structure. It is drilled for wall or floor mounting.

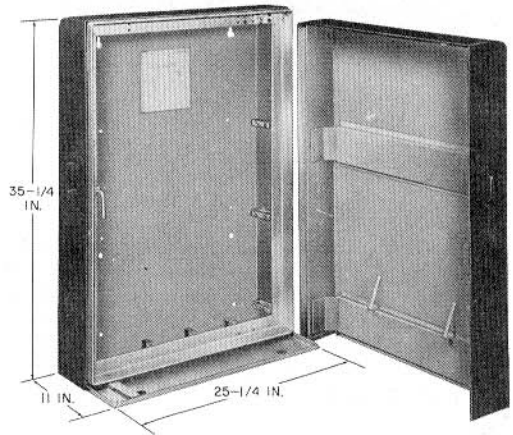


Fig. 14—18-Plate Equipment Cabinet per ED-91180-70

E. ED-91194-70 Cabinet

4.05 The 11-plate equipment cabinet per ED-91194-70* is similar in construction to the ED-91180-70, but has less mounting plate capacity. It is 23-1/8 inches high, 25-1/4 inches wide, and 11 inches deep. The matching wooden base for floor mounting is available for either the 18- or 11-plate cabinet.

F. ED-91472-70 Cabinet

4.06 The 4-plate equipment cabinet (MD) per ED-91472-70* (Fig. 15) is a metal cabinet with a hinged steel gate and removable metal cover. The cabinet is drilled for wall or floorstand mounting.

*Available in several different specifications. See ED drawing or, where available, catalog of supplies for group number.

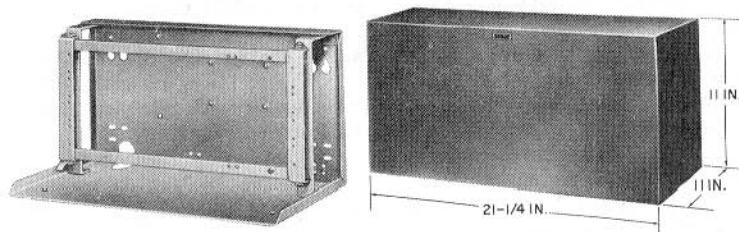


Fig. 15—4-Plate Cabinet per ED-91472-70 (MD)

G. ED-91981-70 Cabinet

4.07 The 45-plate apparatus cabinet per ED-91981-70* (Fig. 16) is a metal cabinet with a hinged door in front and back. The cabinet is drilled for floor mounting. It is shown in Fig. 16 as a housing for storage batteries.

H. ED-92185-70 Cabinet

4.08 The 26-plate apparatus cabinet per ED-92185-70* (Fig. 17) is a metal cabinet with a fixed mounting frame having a hinged door in front and lift-off panel in back. It is drilled for floor mounting.

*Available in several different specifications. See ED drawing or, where available, catalog of supplies for group number.

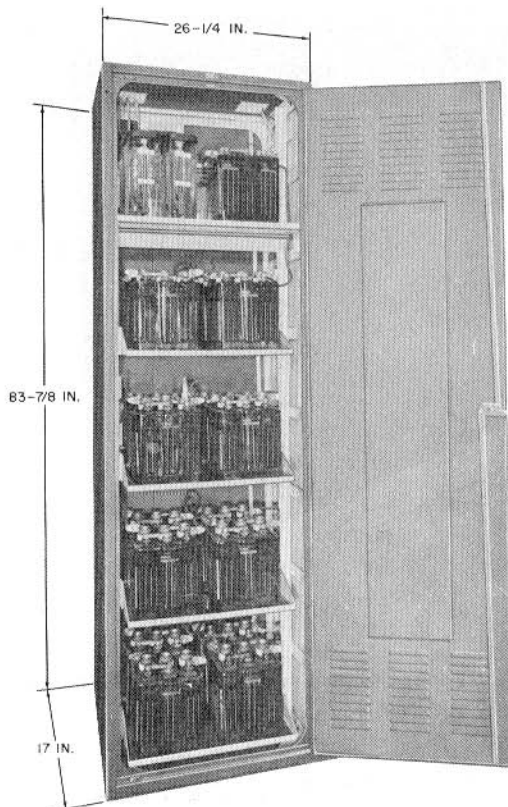


Fig. 16—45-Plate Apparatus Cabinet per ED-91981-70

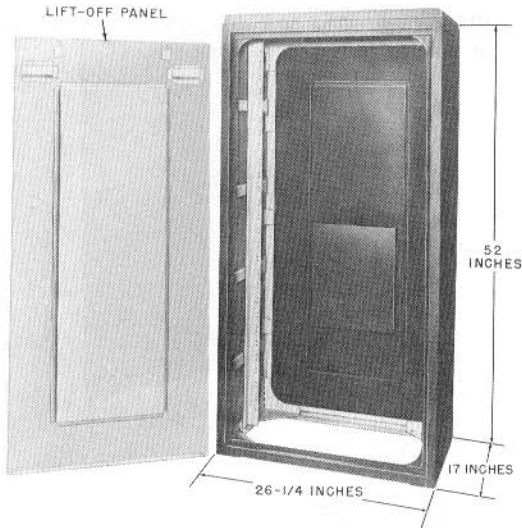


Fig. 17—26-Plate Apparatus Cabinet per ED-92185-70

I. ⚡34-Type Cabinet

4.09 The 34C cabinet (Fig. 18) is a general use, floor-standing unit consisting of a steel bottom and back and a hinged carrier gate. A caster supports the weight of the gate when it is open. Glides or optional casters (D-180700 Kit of Parts) are attached to the bottom corners of the cabinet for easy moving. The back provides a mounting surface for 100-, 101-, and 102-type connecting units; the gate provides a mounting space for a 2-type power panel and one or two 702- or 703-type panels. With a 154A cover installed, the cabinet is 20 inches wide, 19.6 inches deep, and 39.4 inches high overall.⚡

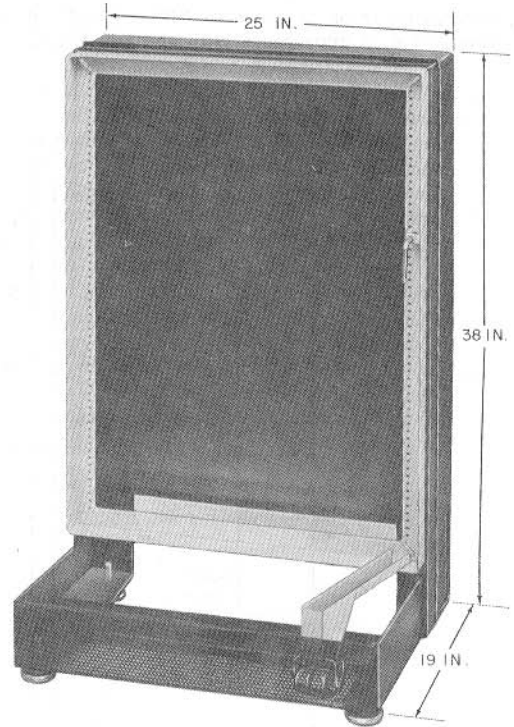


Fig. 18—⚡34C Cabinet⚡

4.10 ⚡The 34D cabinet is similar to the 34C in function and appearance but somewhat larger. The gate is supported by two casters, and the base has four casters permanently attached to the corners. With a 154B cover installed, the cabinet is 26 inches wide, 21 inches deep, and 43 inches high overall.⚡

J. ⚡50A Cabinet

4.11 The 50A cabinet (Fig. 19) is specifically intended for holding 188P-type terminal blocks and 188-type backboards in installations of the Customer Administered Terminal Move Service (CATMS) where wall mounting is not desired. It consists of a modular frame and optional front/rear doors, side panels, and top cover to convert the open frame to an enclosed cabinet. Two full-size terminal blocks and one backboard can be mounted in the 50A cabinet. It can be installed in free-standing

arrangements or adjacent to PBX cabinets; it is compatible in appearance with the DIMENSION®

PBX system. The 50A cabinet can also be used for holding 66-type connecting blocks.†

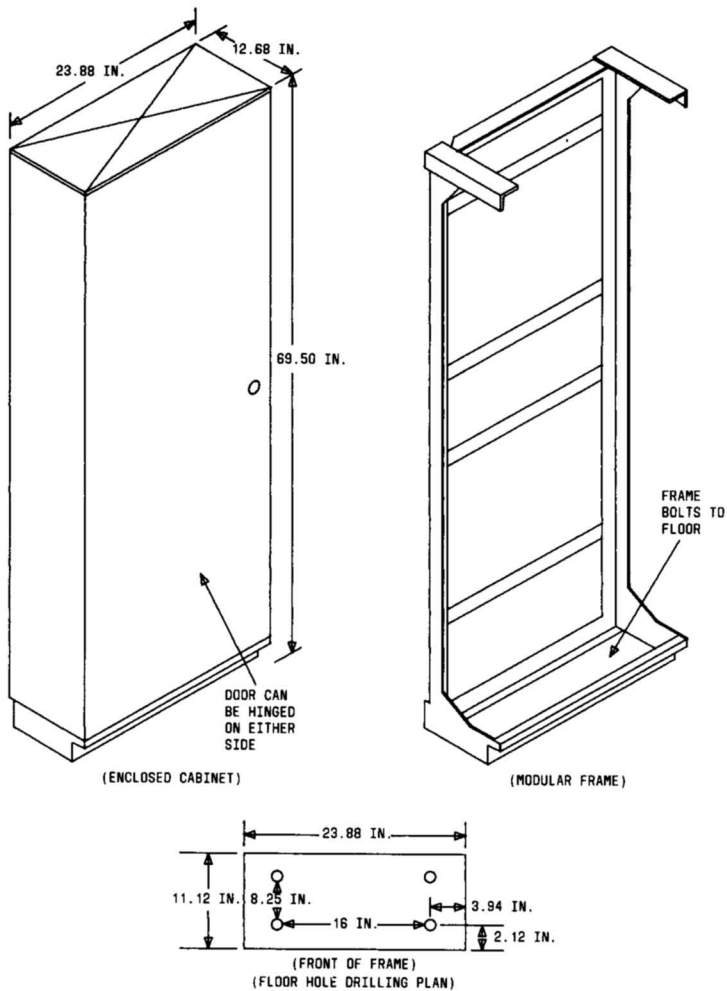


Fig. 19—50A Cabinet†

5. BACKBOARDS AND BASES

A. 173-Type Backboard

5.01 The 173A backboard (Fig. 20) is designed to mount one or two 15A apparatus mountings.

The backboard is made of wood and finished in light olive gray.

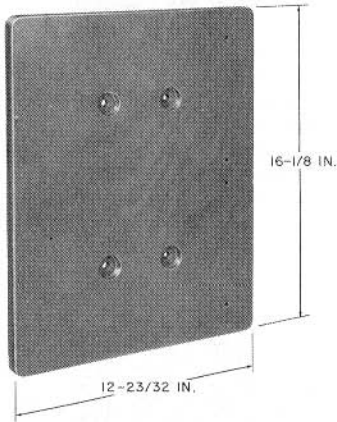
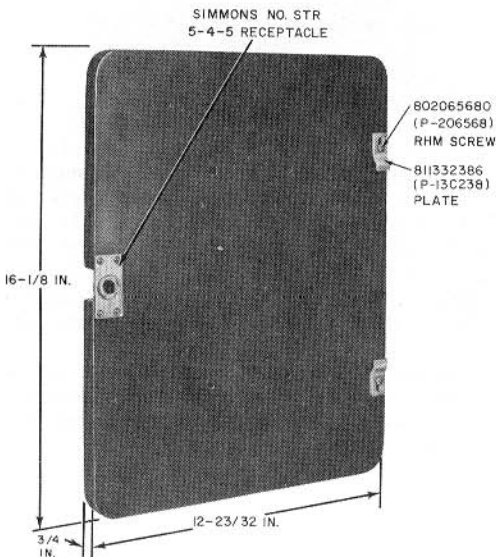


Fig. 20—173A Backboard

5.02 The 173B backboard (Fig. 21) is also finished in light olive gray and is designed to mount one 31A (MD) apparatus mounting.



- WOOD, GRAY
- MOUNTS ONE 31A APPARATUS MOUNTING

Fig. 21—173B Backboard

B. 177A Backboard

5.03 The 177A die-cast aluminum (Fig. 22) backboard has been replaced by a fiberglass (Fig. 23) backboard. The fiberglass type requires self-tapping screws while the aluminum type requires machine screws for attachment. The 177A backboard is designed for use with the 31B apparatus mounting. A shallow dish-shaped recess provides space for mounting 66-type connecting block. The 811537976 (P-15C797) plates, drilled and tapped to permit right or left hinging of 31B apparatus mounting, may be mounted on either side to hold the gate in an open position. To adapt the 177A backboard for use with the 31A (MD) apparatus mounting, use the D-179862 kit assembly. It consists of a 177A backboard, two metal details, and two 66B1-25 connecting blocks.

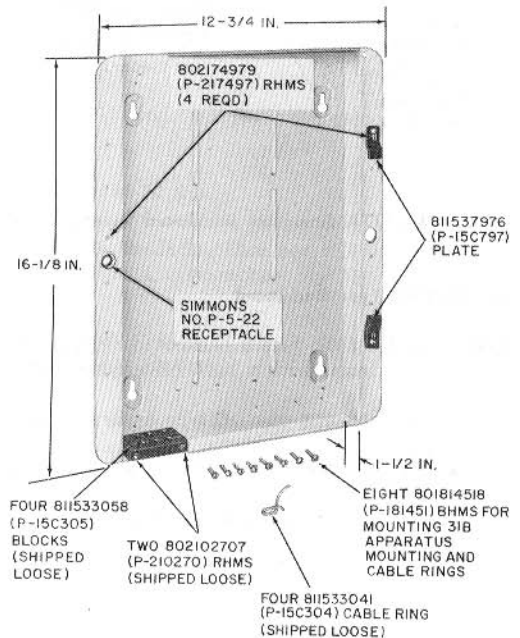


Fig. 22—177A Aluminum Backboard Assembly (MD)

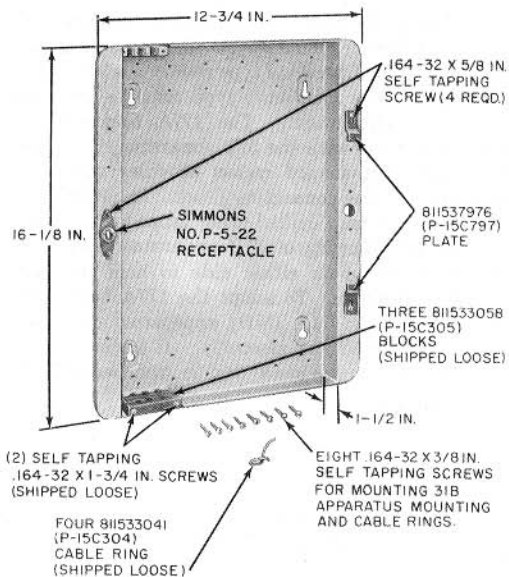


Fig. 23—177A Fiberglass Backboard Assembly

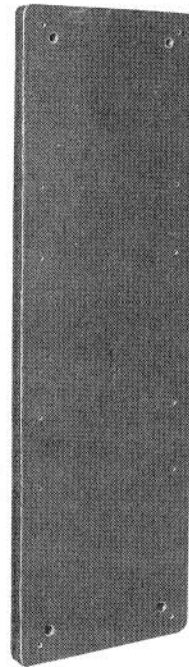


Fig. 24—KS-5796, List 9 Backboard

C. KS-5796 Type Backboard

5.04 The KS-5796, List 9 backboard (Fig. 24) is a backboard with a light olive gray finish.

- List 7 mounts one 105-type apparatus box.
- List 8 mounts two 105-type apparatus boxes.
- List 9 mounts three 105-type apparatus boxes.

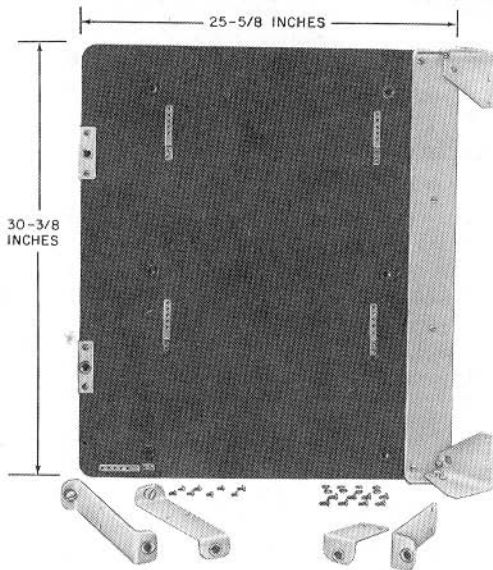
D. ED-69368-50 Backboard

5.05 The ED-69368-50, Group 1 backboard (Fig. 25) is designed to mount one 26A apparatus mounting and one ED-69366-50, Group 3 terminal plate assembly. The backboard has a light olive gray finish. To mount the terminal plate, four 824124788 (P-41K478) brackets, four 802056515 (P-205651) RHM screws, and eight 802065680 (P-206568) RHM screws must be ordered separately.

Note: Counterbored mounting holes and/or segmented butt-joined backboard could require the use of D-179860 parts (below) for strengthening and reinforcing purposes.



To avoid injury or damage resulting from falling 26A apparatus mounting, check and tighten shoulder screws before attempting to open gate. Shoulder screws used to fasten 26A apparatus mounting to end support of ED-69368-50, Group 1 backboard may become unscrewed gradually by opening and closing of gate.



- WOOD, LIGHT OLIVE GRAY
- MOUNT ONE 26A APPARATUS MOUNTING AND ONE ED-69366-50, G3 TERMINAL PLATE ASSEMBLY
- CAN BE EQUIPPED WITH ED-69368-50, G2 COVER

Fig. 25—Backboard per ED-69368-50, Group 1

5.06 The D-179860 kit (Fig. 26), designed to fit over the upper and lower edge of an ED-69368-50, Group 1 backboard, consists of two light olive gray finished, Z-shaped, 1/6-inch steel supporting brackets, and four No. 14 RHW screws. Four holes and a slot are provided in each bracket for fastening to the backboard and wall surface. These brackets may be used, as desired locally, to strengthen or reinforce existing or new backboard installations.

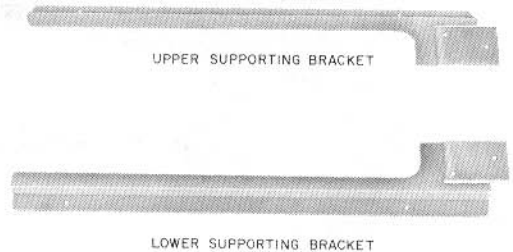


Fig. 26—D-179860 Kit

E. ED-91180-70 Base

5.07 The insulating base per ED-91180-70* (Fig. 27) is a wooden base for 11- and 18-plate cabinets.

F. ED-91472-70 Base

5.08 An insulating base per ED-91472-70* is used as a backboard for the 4-plate apparatus cabinet or as a base for the floor-mounting stand per ED-91296-01*.

*Available in several different specifications. See ED drawing or, where available, catalog of supplies for group number.

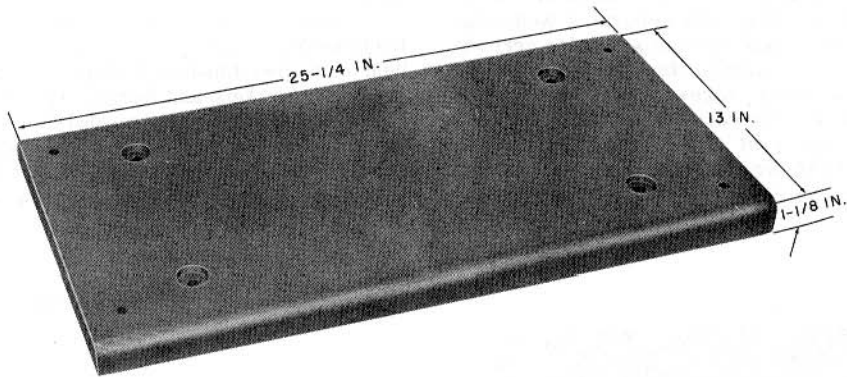


Fig. 27—Insulating Base per ED-91180-70

6. FLOOR STANDS

A. ED-69462-50 Floor Stand

6.01 The floor stand per ED-69462-50, Group 1

(Fig. 28) is a steel floor stand designed to hold a 177A backboard or equivalent. An auxiliary gate is included for mounting a J86731D, List 1 power plant (or physical equivalent). The floor stand may be wall mounted, if desired, by means of slotted holes provided for the purpose.

Note: For unattached installation, the ED-69462-50, Group 3 floor board can be used for added stability.

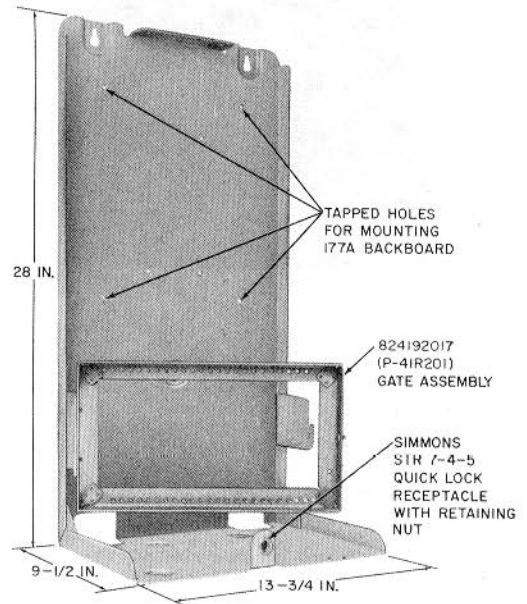


Fig. 28—Floor Stand per ED-69462-50, Group 1

B. ED-91296-70 Floor Stand

6.02 The floor stand per ED-91296-70† (Fig. 29) is a metal stand for mounting two 4-plate apparatus cabinets, one over the other.

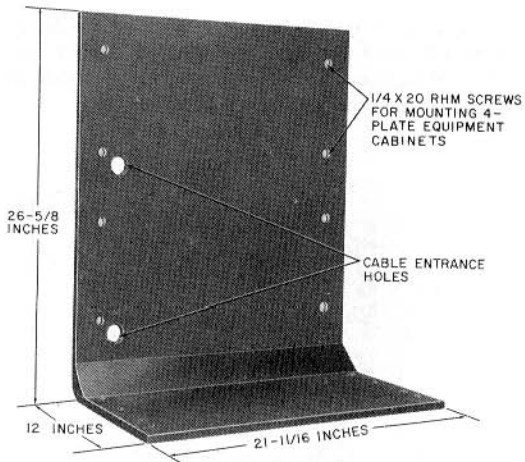


Fig. 29—Floor Stand per ED-91296-70

C. ED-95023-70 Floor Stand

6.03 The metal stand per ED-95023-70† (Fig. 30) has two leg assemblies used to mount one 16A apparatus mounting, or one J86731A, List 4 power plant, and may be used with the 16C apparatus mounting when redrilled locally. It is furnished with four RHM screws, four hex nuts, and four washers.

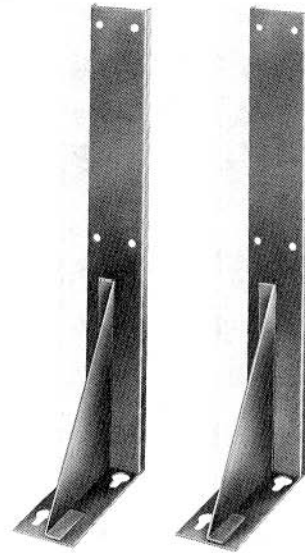


Fig. 30—Metal Stand per ED-95023-70

6.04 The auxiliary leg per ED-95023-70† (Fig. 31) has two extension leg assemblies used to mount the J86731A, List 4 power plant above the 16-type apparatus mounting.

6.05 The covers per ED-95023-70† (Fig. 32) are used to conceal the exposed portion of ED-95023-01 metal stands where appearance is important. Eight RHM screws are furnished with the covers.

†See ED drawing or, where available, catalog of supplies for group number.

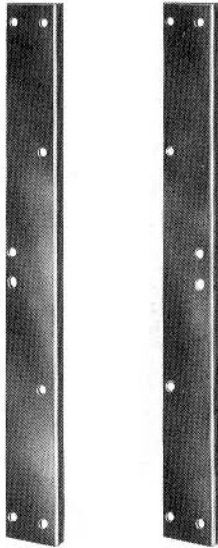


Fig. 31—Auxiliary Leg per ED-95023-70

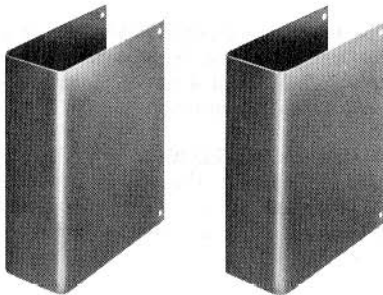


Fig. 32—Covers per ED-95023-70

7. WALL RACKS

ED-69463-50 Wall Racks

7.01 The wall relay rack per ED-69463-50, Group 1 (MD) (Fig. 33) and ED-69463-50, Group 8 (Fig. 34) are steel relay racks designed for centralized installations of key telephone equipment. They consist of two gates hinged on the right side and mounted on a steel frame. Each gate may be

swung open independently after the rack is securely fastened. Rear of frame is covered with a 3/4-inch plywood backboard for mounting cable distribution rings, connecting blocks, etc.

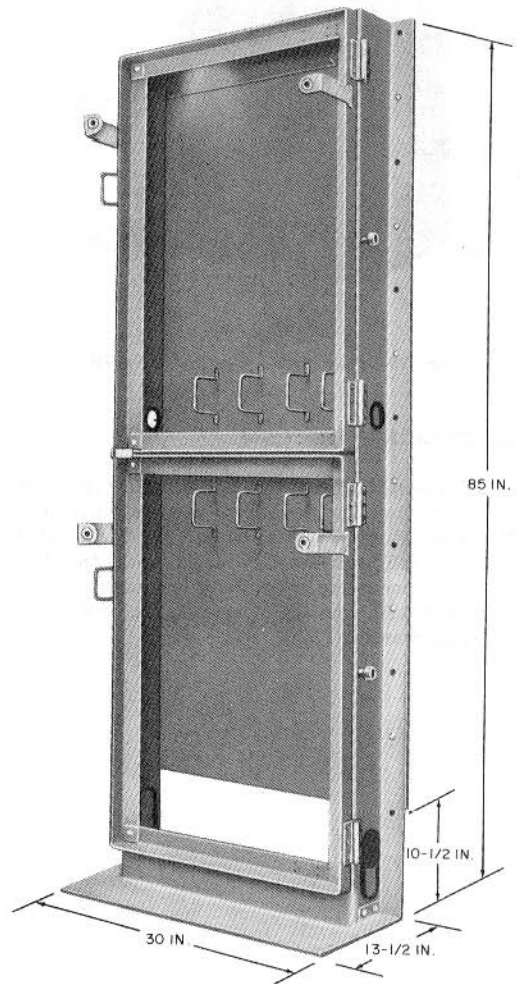


Fig. 33—Wall Relay Rack per ED-69463-50, Group 1 (MD)

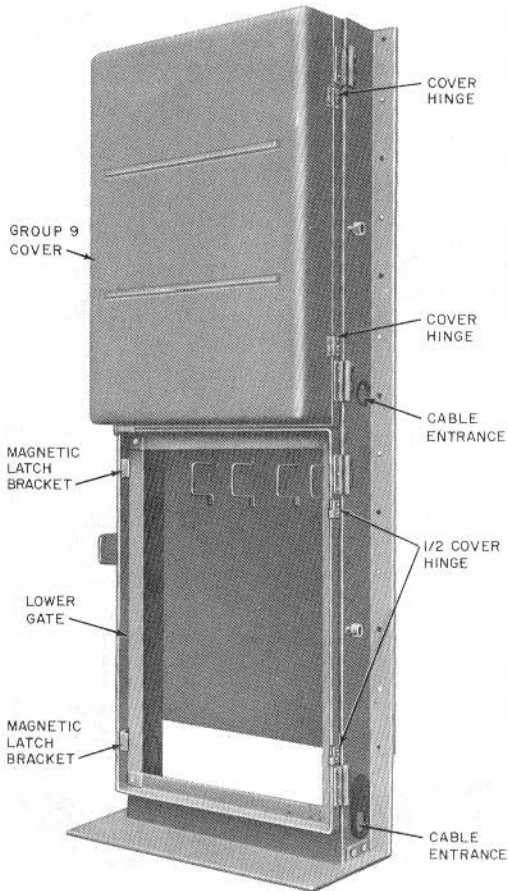


Fig. 34—Wall Relay Rack per ED-69463-50, Group 8, With One Group 9 Cover on Upper Gate

7.02 Multiple installations are possible, either back-to-back or side-by-side. In the latter arrangement, sufficient space must be left between racks to allow opening of the gates after equipment has been installed. Approximately 30 inches, measured from wall surface, are required at front of relay rack to allow full opening of gates. The relay rack weighs approximately 200 pounds unequipped. Care must be taken to ensure safe floor loading and proper anchoring. With the addition of other group assemblies, the rack has a capacity of forty 1-3/4 inch mounting plates or

thirty-four 2-inch mounting plates. The group assemblies are designed for the mounting of combinations of mounting plates and terminal strips. See Section 463-140-200 entitled Equipment Cabinets and Apparatus Mountings—Installation.

8. COVERS

A. 116A Cover

8.01 The 116A cover (Fig. 35) is designed to enclose:

- One or two 15A apparatus mountings mounted on a 173A backboard
- One 31A (MD) apparatus mounting mounted on a 173B backboard
- One 31B apparatus mounting on a 177A backboard.

Note: Two 811910082 (P-19A008) cover supports and eight RHM screws are furnished with cover.

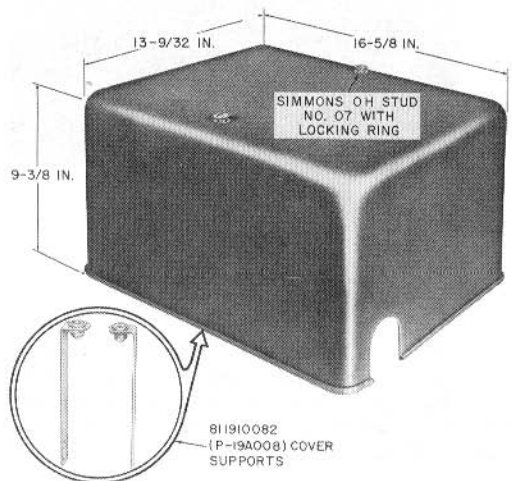


Fig. 35—116A Cover

B. 117-Type Cover

8.02 The 117A cover (Fig. 36) is designed to enclose:

- One 16A (MD) or 16C apparatus mounting
- Two 31A (MD) apparatus mountings mounted on two 173B backboards
- Two 31B apparatus mountings mounted on two 177A backboards
- Three or four 15A apparatus mountings mounted on two 173A backboards.

Note: When used to enclose the 15A, 31A (MD), or 31B apparatus mounting, two 811910082 (P-19A008) cover supports and eight 802056523 (P-205652) RHM screws must be ordered separately.

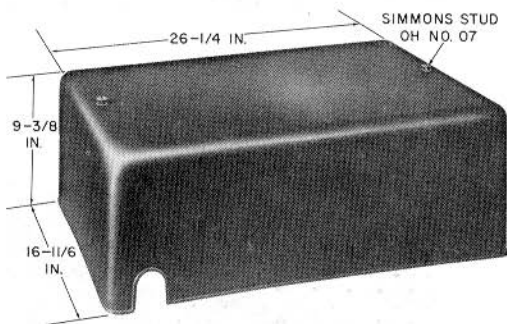


Fig. 36—117A Cover

8.03 The 117C cover is a general use fiberglass cover with the same applications as the 117A cover but having a more decorative appearance. The 117C cover is 26 inches wide, 16 inches deep, and 18-1/2 inches high.

C. 154-Type Cover

8.04 A 154A cover (Fig. 37) can be used with a 34C cabinet, or a 154B cover with a 34D cabinet, to provide a more finished appearance in

a business office installation. They are made of fiberglass and extend over the top, sides, and front of the associated cabinet.

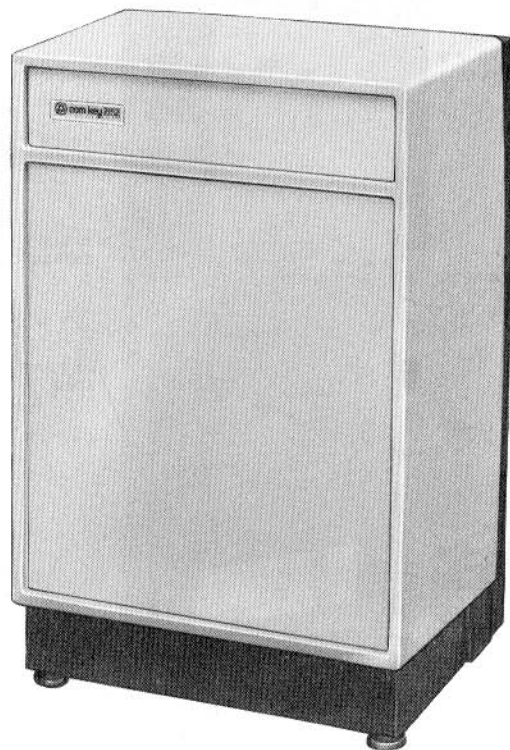


Fig. 37—154A Cover on 34C Cabinet

D. ED-69368-50 Cover

8.05 The cover per ED-69368-50, Group 2 (Fig. 38) is designed to enclose one 26A apparatus mounting on an ED-69368-50, Group 1 or 3 backboard.

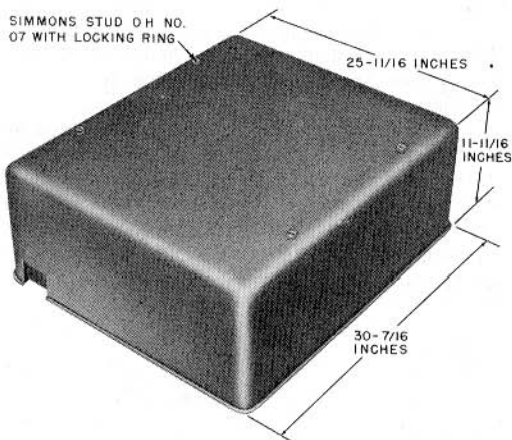


Fig. 38—Cover per ED-69368-50, Group 2

E. ED-69462-50 Cover

8.06 The cover per ED-69462-50, Group 2 (Fig. 39) is a fiberglass cover designed for use with ED-69462-01, Group 1 floor stand.

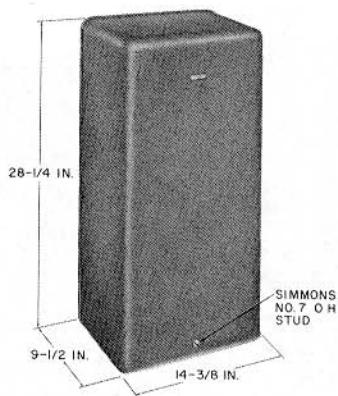


Fig. 39—Cover per ED-69462-50, Group 2

F. ED-69463-50 Cover

8.07 The cover per ED-69463-50, Group 6 (A&M Only) shown in Fig. 40 is a matted fiberglass cover designed to enclose one ED-69463-50 Group 1 (MD) wall relay rack. The cover is shown as it appears when assembled. It is shipped as a flat panel with top, center, and bottom panels, and must be formed on the job.

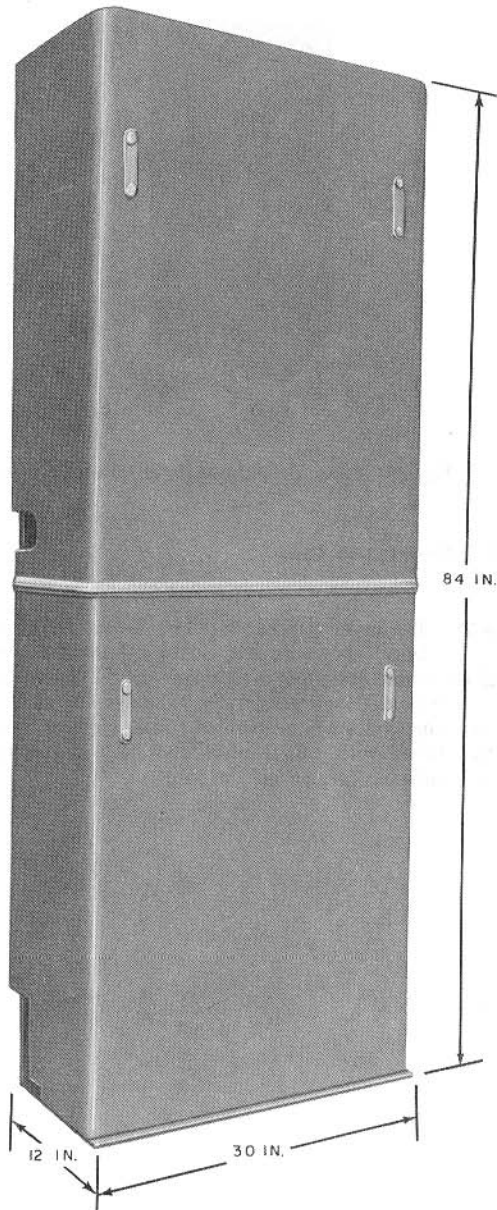


Fig. 40—Cover per ED-69463-50, Group 6 (A&M Only)

8.08 The ED-69463-50, Group 9 (Fig. 41) cover is a formed plastic cover hinged on the right side and held closed by magnetic catches. The hinges are the lift-away type to simplify installation and removal for maintenance. The keepers for the magnetic catches are mounted on the left side of the gate. The cover becomes part of the gate and the gate can be opened without disturbing the cover. Two Group 9 covers are required for one Group 8 relay rack. Half of the hinges mount on the relay rack gate and the other halves are riveted to the Group cover.

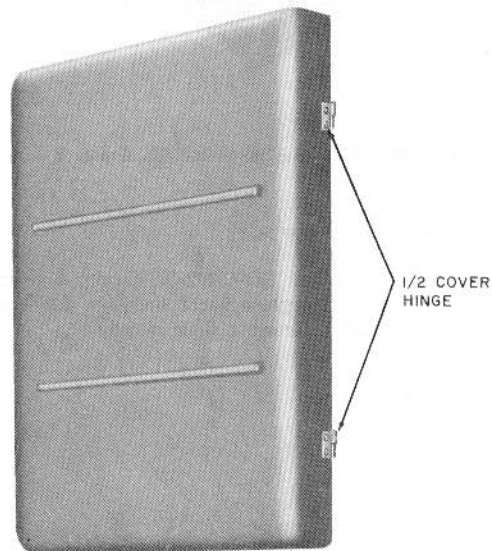


Fig. 41—Cover per ED-69463-50, Group 9

9. TERMINAL PLATE AND WALL BOX**A. ED-69366-50 Terminal Plate Assembly**

9.01 The terminal plate assembly per ED-69366-50, Group 3 (Fig. 42) is used primarily as a distribution terminal for the 26A apparatus mounting.

It has a capacity of 360 terminals which provide for wire-wrapped connections on the back and screw terminal connections on the face. This assembly fastens into a floor-supported cabinet per ED-69366-50, onto a terminal wall box per ED-69391-50, or on a backboard per ED-69368-50.

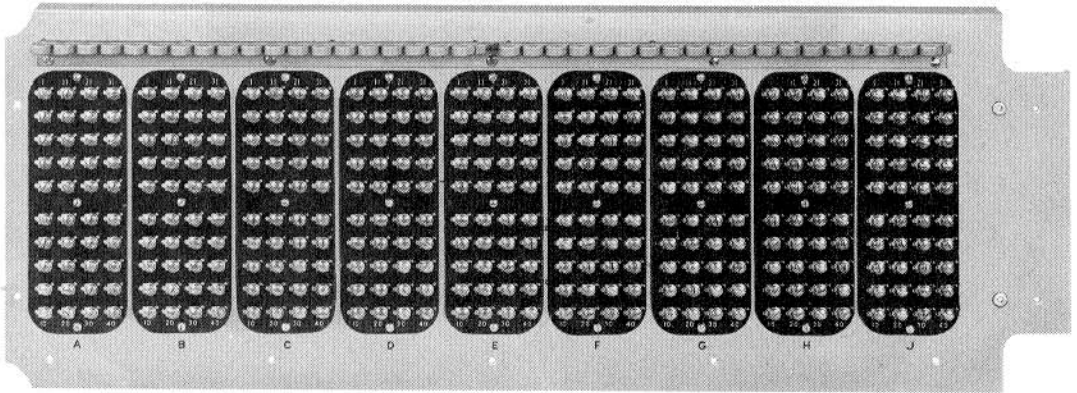


Fig. 42—Terminal Plate Assembly per ED-69366-50, Group 3

B. ED-69391-50 Terminal Wall Box

9.02 The terminal wall box per ED-69391-50, Group 1 (Fig. 43 and 44) consists of a particle

board backboard and a cover, plus hardware needed to hold one terminal plate assembly per ED-69366-50, Group 4.

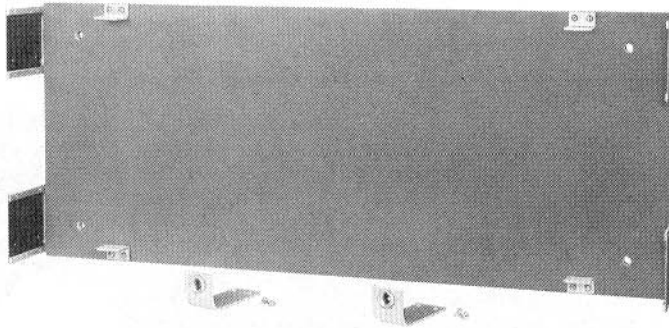


Fig. 43—Terminal Wall Box per ED-69391-50, Group 1

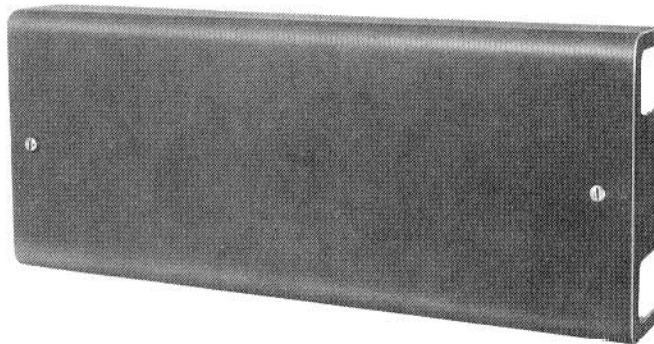


Fig. 44—Terminal Wall Box per ED-69391-50, Group 1 (Cover)

10. ADAPTERS, BRACKETS, AND MOUNTING BARS

hardware are supplied with the adapter but the 99-type brackets must be separately ordered.

ADAPTERS

A. 262A Adapter

10.01 The 262A adapter is used to mount a 20-type power unit in a 16C apparatus mounting with two 615A panels using 99-type brackets (Fig. 45). All necessary screws and

B. 813622099 (P-36B209) Adapter

10.02 The 813622099 (P-36B209) adapter (Fig. 46) consists of two extensions required for mounting one 1-3/4 by 19-inch mounting plate on 23-inch gates and relay racks.

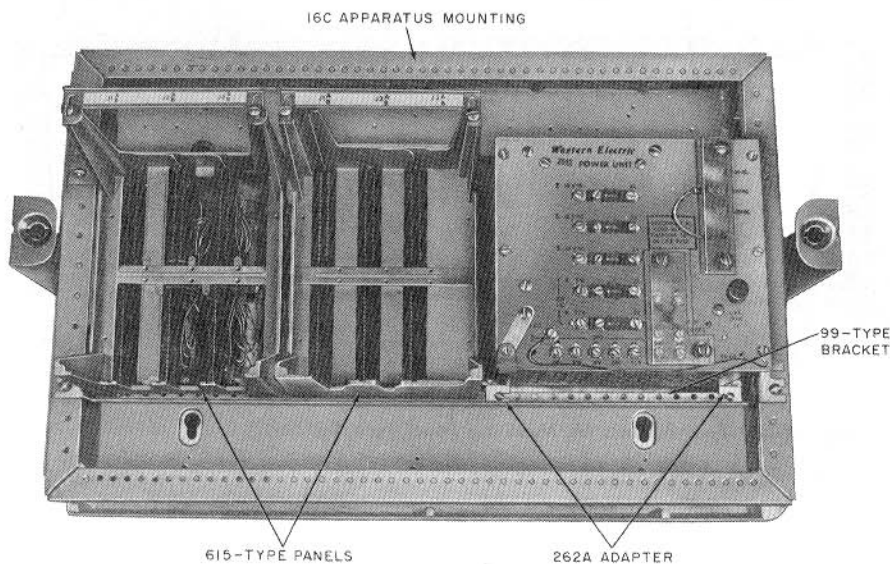


Fig. 45—16C Apparatus Mounting With 615A Panels Mounted on 99-Type Brackets and 20-Type Power Unit Mounted on 262A Adapter

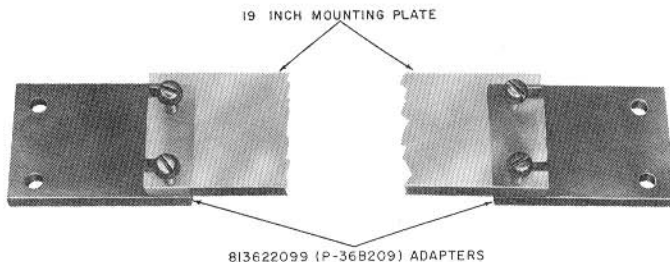


Fig. 46—813622099 (P-36B209) Adapter

BRACKETS

A. 67-Type Bracket

10.03 The 67A (19-inch) and 67B (23-inch) brackets are used to mount panel-type KTUs on relay racks or in 11-, 18-, 26-, and 45-plate apparatus cabinets. The 67A bracket replaces the 813718236 (P-37A823) mounting bar; the 67B bracket replaces

the 813715026 (P-37A502) mounting bar (see Fig. 47).

Note: Frames, gates, or mountings drilled on 1-inch centers for 2-inch mounting plates require an 813719010 (P-37A901) mounting bar assembly in addition to either the two 67A or two 67B brackets needed for accommodating panel-type KTUs.

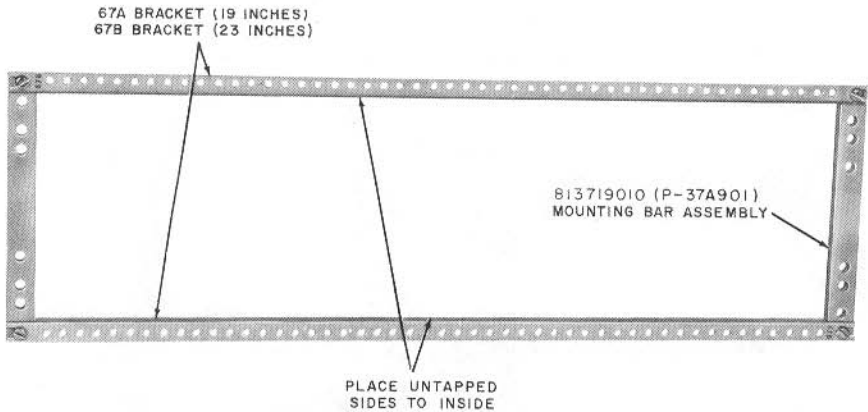


Fig. 47—67-Type Brackets for Mounting Panel Type 200-Series Key Telephone Units

B. 813722048 (P-37B204) Bracket

10.04 The 813722048 (P-37B204) bracket (Fig. 48) is used to mount angle-bracket type KTUs on 15A, 16-type, 26A, and 31-type apparatus mountings. Twelve tapped holes permit front and rear mounting of single- and double-space KTUs. Furnished with four 803535012 (P-353501) SPLHM screws for attaching to the apparatus mounting.

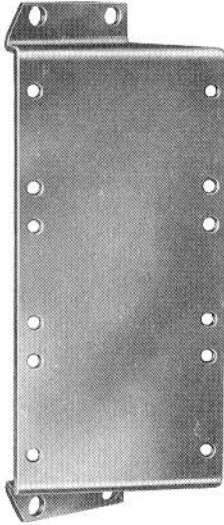


Fig. 48—813722048 (P-37B204) Bracket

C. ED-69366-50 Bracket

10.05 The bracket assembly per ED-69366-50, Group 2 (Fig. 49) has two wheel-equipped support plates needed to install a 26A apparatus mounting on the floor or in the floor-supported cabinet per ED-69366-50, Group 1. Eight RHM screws are furnished with the assembly. Nylon wheels are replaceable as Simmons Fastener Corp. Springlock Roller Assembly G-1300A-1343.

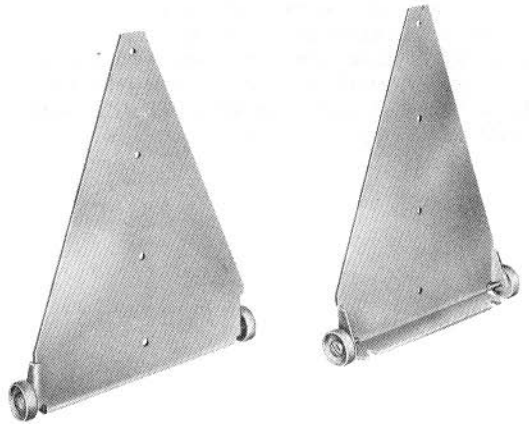


Fig. 49—Bracket Assembly per ED-69366-50, Group 2

MOUNTING BARS**A. 811238245 (P-12C824) Mounting Bar**

10.06 The 811238245 (P-12C824) mounting bar has slotted ends and can be used as a substitute for 67B brackets in 11-, 18-, 25-, and 45-plate apparatus cabinets.

**B. 813538733 (P-35C873) Mounting Bar**

10.07 The 813538733 (P-35C873) mounting bar (Fig. 50) has two bars needed to mount one or two 811331131 (P-13C113) frame assemblies [31A (MD) apparatus mounting less welded hinge and fastener details] on a 23-inch wide relay rack. It is furnished with four 803534468 (P-353446) RHM screws.

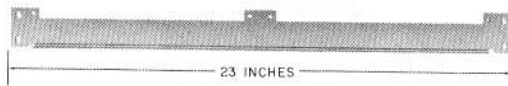


Fig. 50—813538733 (P-35C873) Mounting Bar

C. ED-69143-70 Mounting Bar

10.08 The bent mounting bars per ED-69143-70† (Fig. 51) are used to mount angle-bracket KTUs on 23-inch relay racks and in 4-, 11-, 18-, 26-, and 45-plate apparatus cabinets.

† See ED drawing or, where available, catalog of supplies for group number.

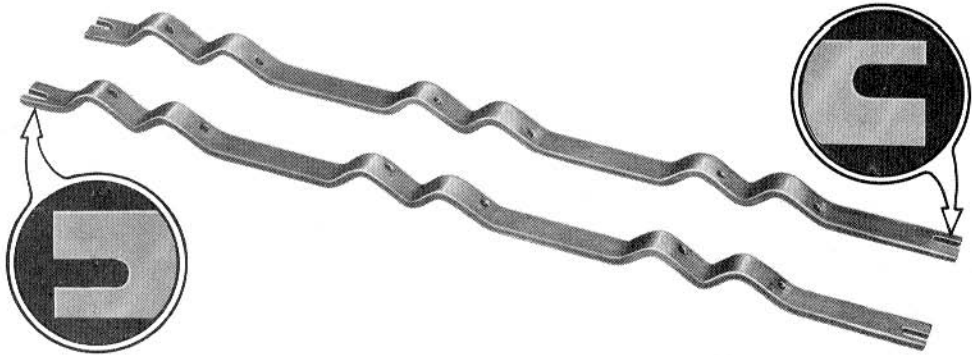


Fig. 51—Bent Mounting Bars per ED-69143-70