

1A TERMINATION UNIT

1. GENERAL

1.01 This section contains identification and installation information formerly found in Section 501-251-110.

1.02 The 1A termination unit (Fig. 1) is a telephone line termination device that simulates the electrical characteristics of a station set ringer.

2. IDENTIFICATION

2.01 The 1A termination unit is intended for use on any telephone line where a ringer is not permanently connected.

2.02 The termination unit enables the central office test desk to perform any test of the telephone line that may be performed with a station set installed. Use of the unit, however, reduces by one the number of ringers that may be connected to the line.

3. INSTALLATION

3.01 The 1A termination unit is suitable for indoor or outdoor mounting adjacent to the 123A1A protector block or may be mounted in an AT-8732 B Outlet Box. The unit is equipped with weatherproof pigtail leads for connection to the protector block.

3.02 The 1A termination unit is connected across the line as shown in Fig. 2.



Fig. 1—1A Termination Unit

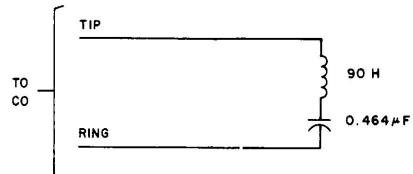


Fig. 2—1A Termination Unit, Connections

NOTICE

Not for use or disclosure outside the
Bell System except under written agreement