

SUBSCRIBER SETS
LOUD RINGING BELLS
INSTALLATION

1. GENERAL

1.01 This section covers installation of loud ringing bells for indoor and outdoor locations.

1.02 It is reissued to:

- Change title.
- Include information on new apparatus.

392-Type Subscriber Sets

1.03 The 392-type subscriber set is equipped with two No. 28A 6-inch steel galvanized gongs. The 392-type subscriber set is superseded by the 592-type subscriber set.

592-Type Subscriber Sets

1.04 The 592-type subscriber set is equipped with two 3-inch 26B brass, black finished gongs. The 592-type subscriber set is superseded by the L1A ringer.

L1A Ringer

1.05 The L1A ringer is equipped with one 26E gong and one 26F gong.

2. INSTALLATION

2.01 Prior to installation consider:

AUDIBILITY

- (a) Select a location where volume of sound will be best distributed and wherever practicable, place set at least 10 feet above ground.

(b) The sound output of the 392-type subscriber set is regulated by gong adjustments.

(c) To increase the sound output of the 592-type subscriber set, replace the standard 3-inch 26B gongs with 4-inch 42A gongs and brackets.

(d) See section on L1A ringers for adjustment of gongs for maximum sound output.

(e) Mounting holes for the 169A backboard are located on and 1 inch to either side of the vertical center line of the backboard.

(f) Mount the L1A ringer with a 181A backboard (Fig. 5). Two RH self-tapping screws are furnished with the backboard.

(g) Mount L1A ringer in a vertical position with gongs at top.

3. MOUNTING

Indoor

3.01 Backboards are not generally required for mounting subscriber sets and should not be used unless it will facilitate the installation or where a more secure mounting is required, such as on uneven surfaces.

3.02 When walls are uneven:

(a) Shim backboards and use screws 1/2 inch longer than specified in Table A.

(b) When required, the 171A wood backboard (Fig. 1) is used to attach the 592-type subscriber set.

TABLE A
MOUNTING THE 171A BACKBOARD

Surface	Quantity	Fastener
Hardwood	4	1 in., No. 8 RH Blued Wood Screws
Softwood	4	1-1/4 in., No. 8 RH Blued Wood Screws
Plaster on Masonry Block	3	2 in., No. 8 RH Blued Wood Screws in 6-8 x 3/4 in. Screw Anchors
Masonry	4	1-1/2 in., No. 8 RH Blued Wood Screws in 6-8 x 3/4 in. Screw Anchors
Metal	3	12-24 x 9/16 in. RH Galvanized Iron Machine Screws
Hollow Tile, Metal Lath	2	1/8 x 4 in. BH Toggle Bolts (cut off excess length)
Corrugated Metal	2	1 in., No. 8 RH Self-tapping Screws

Note: Use same fasteners to mount 592-type subscriber sets to wood surfaces.

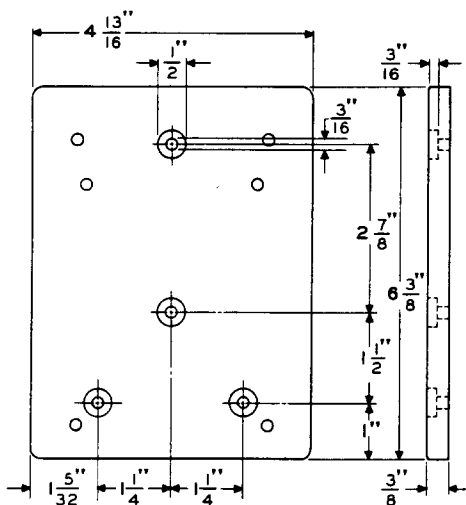


Fig. 1 – 171A Backboard

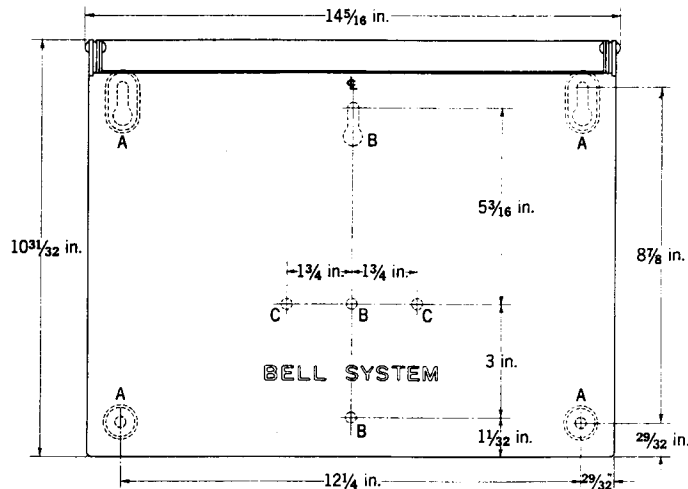


Fig. 2 – 159A Backboard

- (c) A 9- by 12- by 3/4-inch hardwood backboard may be used to mount the 392-type subscriber set.
- (d) The L1A ringer is fastened directly to wall surface with two fasteners.
- (e) Obtain customer permission before attaching subscriber sets or backboards to finely finished surfaces.

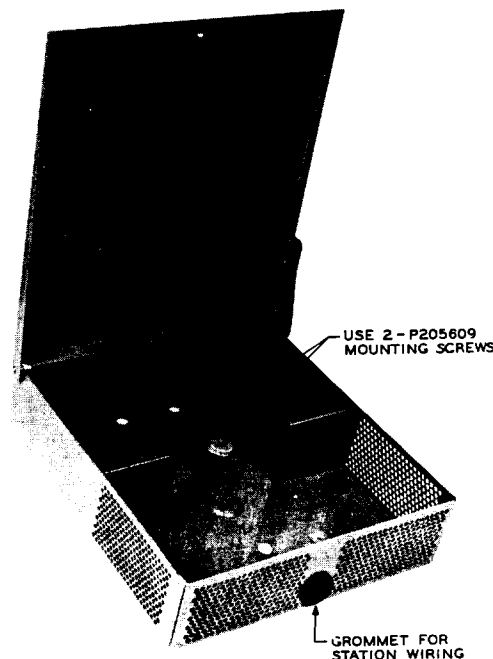


Fig. 3 – 169A Backboard

Outdoor

3.02 Locate subscriber sets where workman and equipment will not be exposed to injury or damage.

3.03 Install subscriber sets in enclosed steel backboards.

3.04 When exposed to the weather:

(a) Mount the 392-type subscriber set with a 159A backboard (Fig. 2, Table B). Two P-160406 12-24 by 9/16-inch RH machine screws are furnished with the backboard.

(b) Mount the 592-type subscriber set with a 169A backboard (Fig. 3 and 4). Two P-205609 8-32 by 5/8-inch RH brass machine screws are furnished with the backboard.

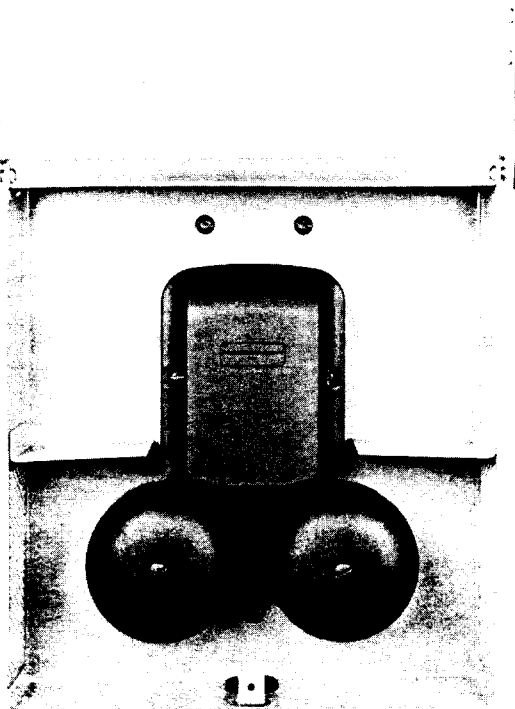


Fig. 4 — 592-Type Subscriber Set Mounted

TABLE B

MOUNTING THE 159A BACKBOARD

Surface	Quantity	Fastener
Wood	4	1 in., No. 14 RH Galvanized Wood Screws. (Use knock-out holes A.)
Wood Poles (see note)	2	1 in., No. 14 RH Galvanized Wood Screws in upper and lower knock-out holes B.
	2	1-1/2 in., No. 14 RH Galvanized Wood Screws in knock-out holes C.
Plastered Surfaces having Wood Studs	3	1 in., No. 14 RH Galvanized Wood Screws. (Use knock-out holes B and place screws in studding.)
Unfinished Masonry	4	1 in., No. 14 RH Galvanized Wood Screws in 10-14 x 1 in. Screw Anchors. (Use knock-out holes A.)
Finished Masonry	4	2 in., No. 14 RH Galvanized Wood Screws in 10-14 x 1 in. Screw Anchors. (Use knock-out holes A.)
Hollow Tile, Metal Lath, Corrugated Metal	4	3/16 x 4 in. BH Toggle Bolts. (Use knock-out holes A. Cut off excess bolt length.)
Solid Metal (see note)	3	12-24 x 9/16 in. RH Iron Machine Screws. (Use upper knock-out hole B and knock-out holes C.)

Note: If C knockout holes are not provided, drill at location shown in Fig. 2 with 9/32-inch drill. Fasteners through knockout holes should be brought up snug without forcing to avoid distorting backboard and throwing tapped mounting holes for the 392-type subscriber set out of alignment.

(c) Where practicable, use three of the same fasteners shown in Table B to attach the 169A backboard.

(d) Where use of the bottom mounting hole in the 169A backboard is not practicable, place fastener through the small knockout hole provided near center of backboard.

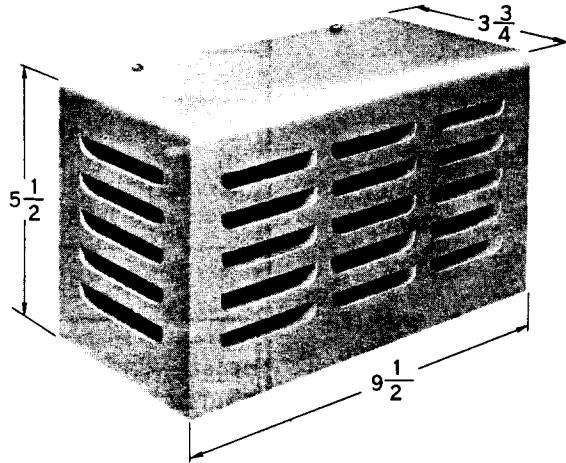


Fig. 5 — 181A-49 Backboard for Mounting L1A Ringer