

SUBSCRIBER SETS - 634AT

COMMON BATTERY - INDUCTION COIL TYPE - CONNECTIONS

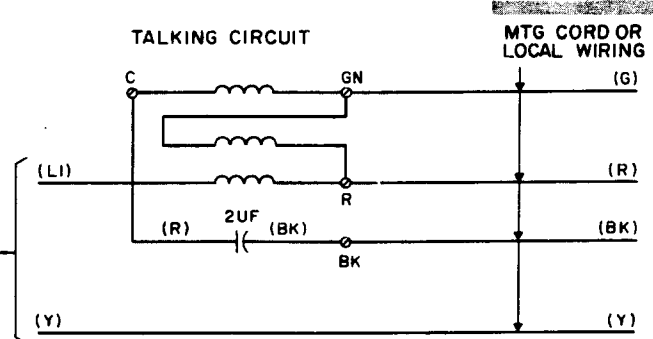
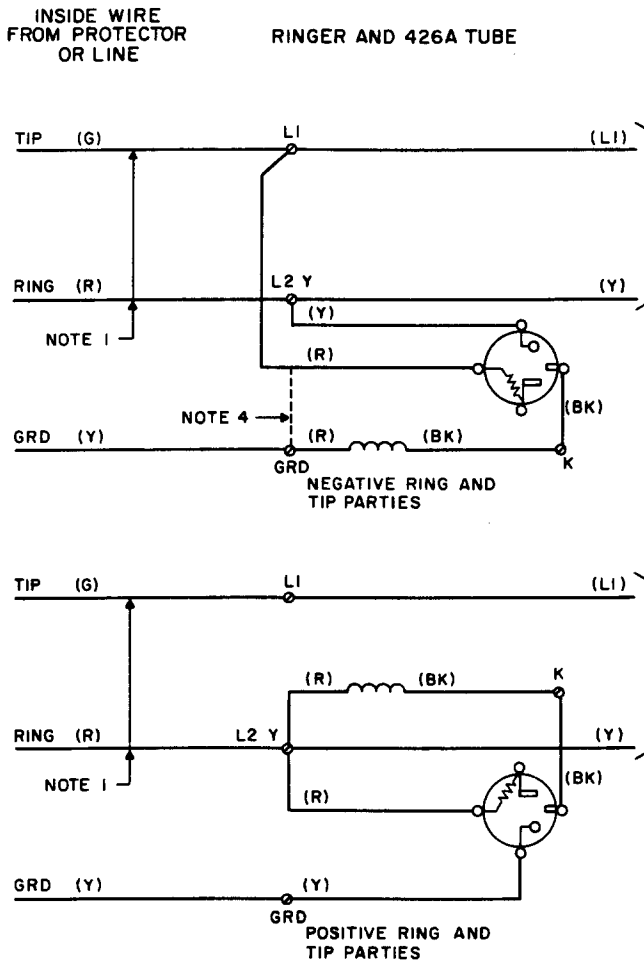


TABLE A
ASSOCIATED APPARATUS

Class of Service	Hand Telephone Sets	
	Hang-up Type	Desk Type
4-Party	201A, B, C, D	202A, B, C, D
Full Selective	211A, B, C, D, J, L	203A, B, C, D, E, F
8-Party	212A, B, C, L	215A, B, C, D
Semiselective	213A, B, C, E	

TABLE B

LINE, RINGER, AND TUBE CONNECTIONS

Wire or Lead		Negative (-) Parties		Positive (+) Parties	
		Ring	Tip	Ring	Tip
		1-5	2-6	3-7	4-8
Ringer Leads See Note 2	BK	K	K	K	K
	R	Grd	Grd	L2Y	L2Y
426A Tube (3-Element) See Note 3	R	L1 or Grd	L1 or Grd	L2Y	L2Y
	BK	K	K	K	K
	Y	L2Y	L2Y	Grd	Grd
Mounting Cord or Local Wiring	G	GN	GN	GN	GN
	R	R	R	R	R
	BK	BK	BK	BK	BK
Inside Wire from Protector or Line	Y	L2Y	L2Y	L2Y	L2Y
	R	L2Y	L1	L2Y	L1
	G	L1	L2Y	L1	L2Y
	Grd	Grd	Grd	Grd	Grd
4-Element Electron Tube Connections to Reduce Inductive Noise					
425A Tube (4-Element) See Note 3	R	L1	L1	L2Y	L2Y
	G	L2Y	L2Y	L1	L1
	BK	Grd	Grd	L2Y	L2Y
	Y	K	K	K	K

- Note 1: Tip and ring reversed for tip party service.
- Note 2: To silence ringer permanently, connect the red and black ringer leads to the K terminal.
- Note 3: For additional information concerning inductive interference, refer to section entitled Inductive Noise.
- Note 4: For negative stations in offices without ANI, R lead from 426A tube may be connected to Grd if ringer operation is marginal.

Fig. 1 - Circuit Diagram for Connection with Hand Telephone Sets