

TELEPHONE SETS—507A, B; 509A, B; 557A, B; AND 559A, B
AMPLIFIER SETS FOR LONG LOOPS—CONNECTIONS

TABLE A
LINE AND RINGER CONNECTIONS FOR 507- AND 537-TYPE TELEPHONE SETS

Wire or Lead	Indiv. or Bridged*	Ring Party*	Tip Party No Ident Ground*	Tip Party Ident Ground						
				Normal Connections		Ringer Reversal When Connected to Long Line Equip.		To Silence Ringer Permanently		
				1000Ω	2650Ω	1000Ω	2650Ω	1000Ω	2650Ω	
Ringer Leads	R	L2	L2	L2	K	B	B	G	K	B
	BK	L1	G	G	G	B	B	K	G	K
	S	K	K	K	B	K	G	R	B	K
	S-R	A	A	A	B	G	K	B	K	G
Switchhook Leads	S	L2	L2	L2	A†	A†	A†	A†	L2	L2
Line Wire or Mtg Cord in Set	Ring	R	L2	L2	L1	L1	L1	L1	L1	L1
	Tip	G	L1	L1	L2	L2	L2	L2	L2	L2
Grd	Y	—	G	G	G	G	G	G	G	G

* To silence ringer for all classes of service except tip party identification, connect S and BK ringer leads on K terminal of 425C network.

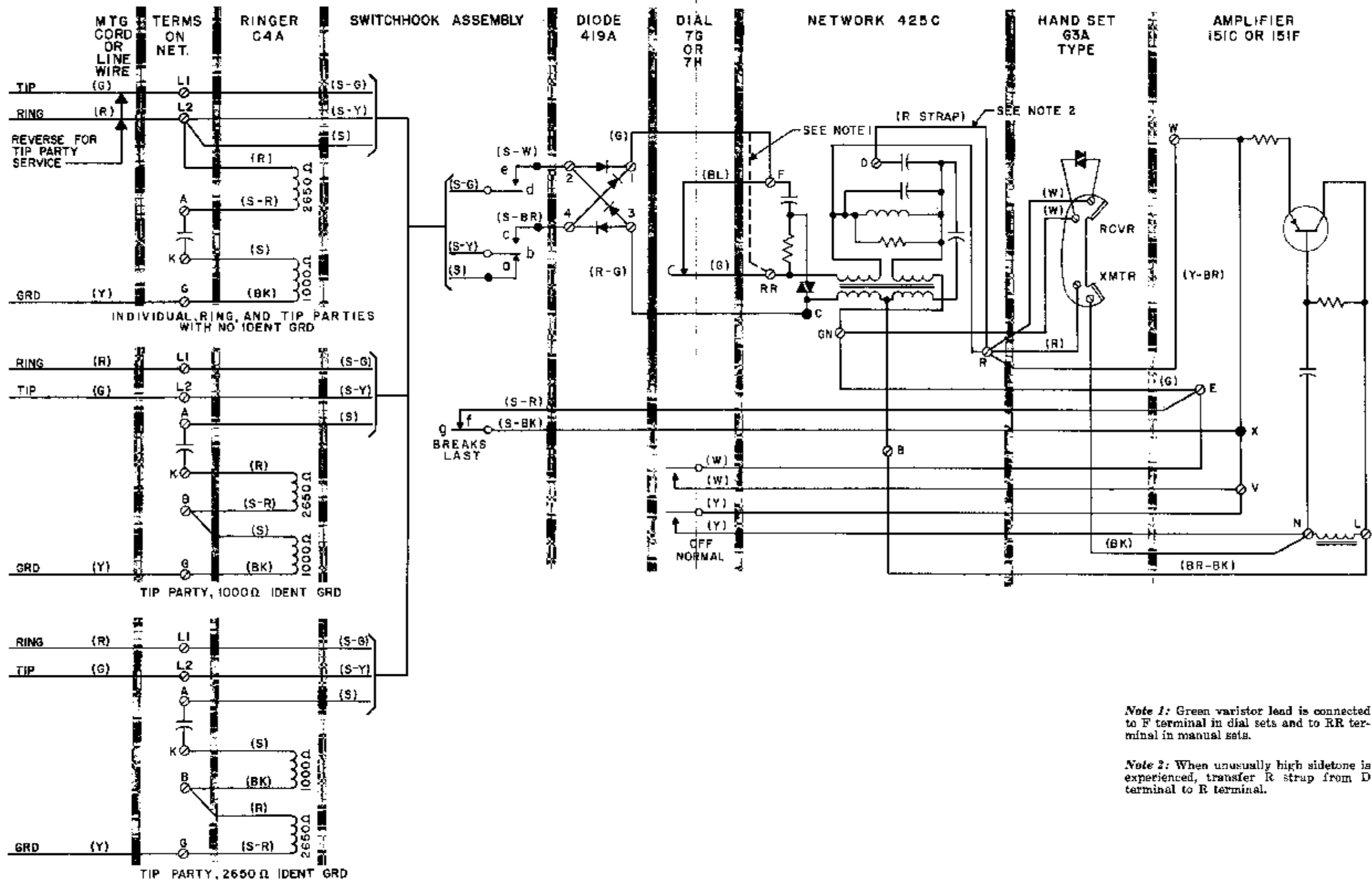
† When moving the S switchhook lead from L2 to A, be sure the lead does not contact the metal housing of the network; otherwise, the finger stop of the desk set or finger stop and handset cradle of the wall set will be energized by ringing current.

TABLE B
SET MODIFICATION FOR TIP PARTY IDENTIFICATION FOR 507- AND 537-TYPE TELEPHONE SETS

Wire or Lead	From	To				
		419A Diode	Amplifier	Network	Network	Switchhook Assembly
Switchhook Assembly	S-BR	4			R-G Lead*	
	S-W	2			F	
	S-BK		X†		R	
Network	R-G	3			S-BR Lead*	
Amplifier	BR-BK			B		3
	Y-BR			R		1
Transmitter	R			R		1
Dial	W		V		R	
Strap	G	1		F	B	4
	M1W Cord or Equiv				R	2

* Use D-16148R connector to terminate these leads.

† Solder connection.



Note 1: Green varistor lead is connected to F terminal in dial sets and to RR terminal in manual sets.

Note 2: When unusually high sidetone is experienced, transfer R strap from D terminal to R terminal.

Fig. 1 — 507A, B and 537A, B Telephone Sets Individual Ring and Tip Parties

TABLE C
LINE AND RINGER CONNECTIONS FOR 509- AND 559-TYPE TELEPHONE SETS

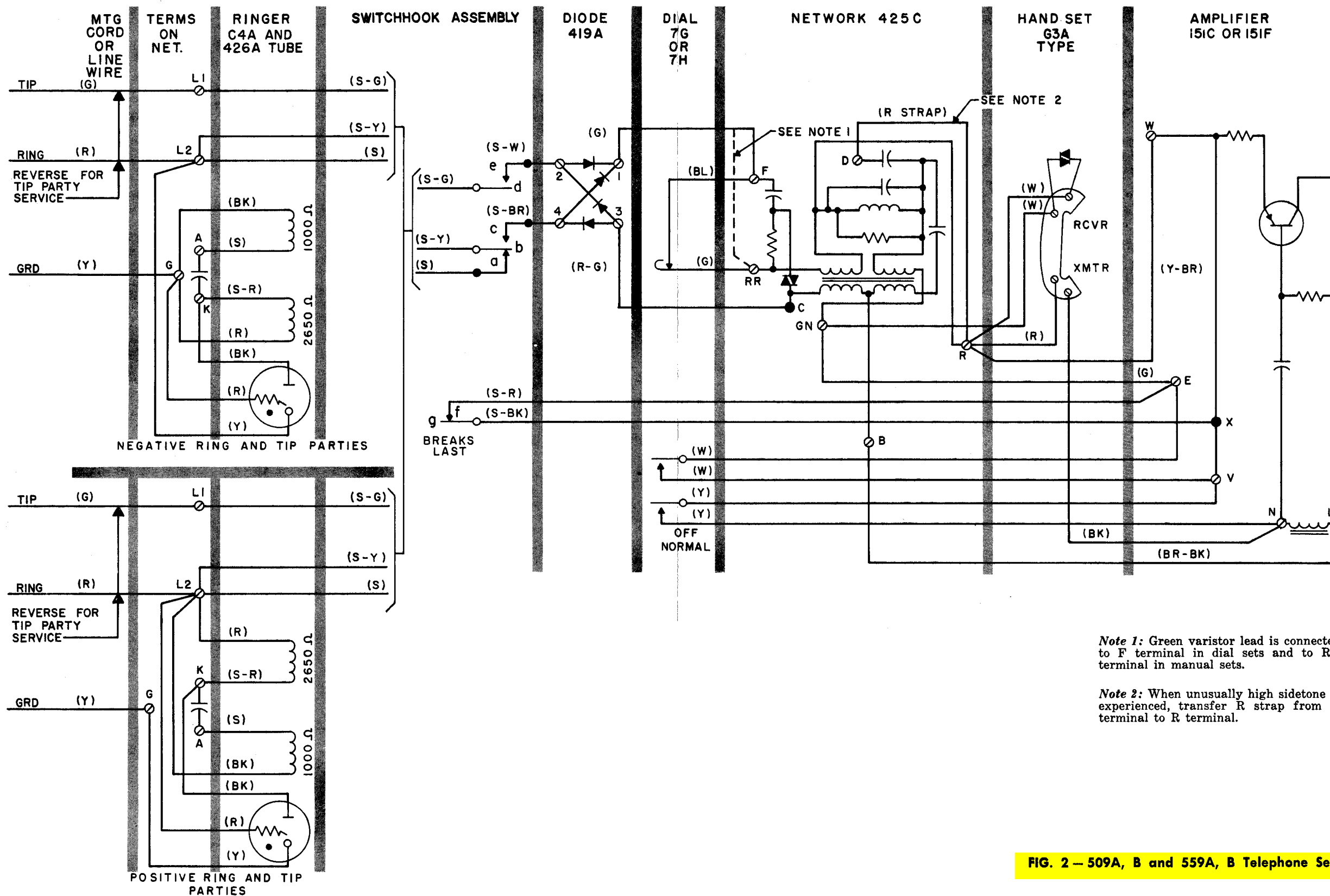
Wire or Lead		Negative (-) Parties		Positive (+) Parties	
		Ring	Tip	Ring	Tip
Line Wire or Mounting Cord in Set	Ring	R	L2	L1	L2
	Tip	G	L1	L2	L1
	Grd	Y	G	G	G
Ringer Lead	R	G	G	L2	L2
	BK	G	G	L2	L2
	S	A	A	A	A
	S-R	K	K	K	K
Tube Lead	R	G	G	L2	L2
	BK	K	K	K	K
	Y	L2	L2	G	G

TABLE D
TUBE LEAD CONNECTIONS FOR INDUCTIVE INTERFERENCE FOR 509- AND 559-TYPE TELEPHONE SETS

Lead		Negative (-) Ring or Tip Parties		Positive (+) Ring or Tip Parties
		Average Induction	Severe Induction	Average or Severe Induction
425A Tube	R		L1	L2
	G		L2	L1
	BK		K	K
	Y		L2	G
426A Tube	R	L1		
	BK	K		
	Y	L2		

Note 1: For additional information concerning inductive interference, refer to section on inductive noise.

Note 2: To silence ringer permanently, connect yellow mounting cord lead to same terminal as red mounting cord lead at connecting block.



Note 1: Green varistor lead is connected to F terminal in dial sets and to RR terminal in manual sets.

Note 2: When unusually high sidetone is experienced, transfer R strap from D terminal to R terminal.

FIG. 2 - 509A, B and 559A, B Telephone Sets