

**BOOTHS—INDOOR**  
**KS-19340 AND 11-TYPES**  
**MAINTENANCE**

**1. GENERAL**

**1.01** This section is reissued to include:

- Maintenance information for the 11-type booth.

**1.02** The approach to the booth shall be free of all hazards.

**1.03** External surfaces that are not badly scratched or marred should be cleaned with a mild detergent and warm water. After drying, the wood surface should be polished with furniture polish or an approved equivalent.

**1.04** When the condition of the external surface is such that cleaning would not be sufficient, the surface should be sanded and refinished.

**1.05** The air space between the ceiling and the roof should be kept free of excessive dust and dirt.

**2. DOOR**

**2.01** The door shall operate freely throughout its entire travel without binding or squeaking. When the door binds or squeaks, check the following:

- (a) Check that booth is level. Refer to Booths—Indoor, KS-19340, Installation for proper booth leveling procedure.

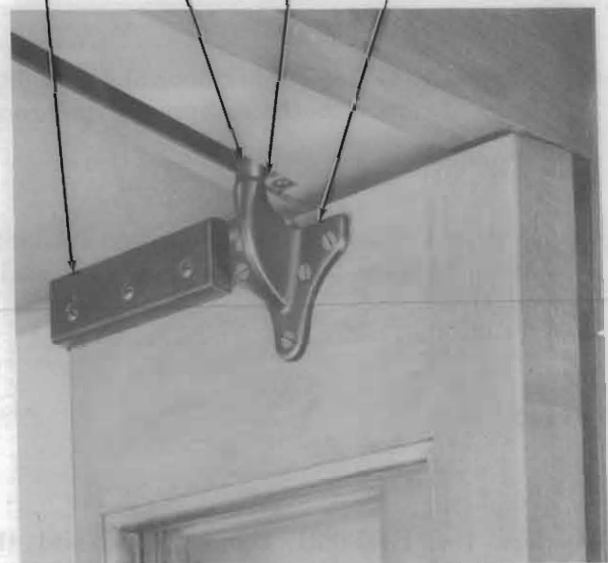
- (b) Thoroughly clean inside of door tracks with KS-7860 petroleum spirits.

**11-Type**

- (c) When the door is equipped with a rectangular guide pin block (P-370165), remove the door guide pin. Replace the rectangular guide block with a guide pin roller P-12A332 (see Fig. 1). Relocate the felt bumper (P-12A336) 3/8 inch nearer the center of the door track. Where a guide pin requires replacement, use the P-16A400 door guide pin.

- (d) Broken or defective wooden door stops shall be replaced using No. 8 oval head steel bronze-finished wood screws.

DOOR STOP    ROLLER    BUMPER    GUIDE PIN



**Fig. 1 — 11-Type, Upper Door Assembly**

**KS-19340**

(c) The guide pin assembly shall be straight and the roller shall be free of nicks and scars. When a guide pin replacement is necessary, order a B-558859 guide pin assembly.

(d) Broken or defective wooden door stops shall be replaced and secured by using No. 8 by 1-1/2 inch zinc plated wood screws.

**2.02** When hinges are noisy or bind, lubricate each joint with KS-14774, List 2G lubricant and wipe off all excessive lubricant. When hinges show wear of 1/8-inch separation between the hinge barrels, replace the hinge with a B-558815 piano hinge assembly on KS-19340 type. For 11-type, use a P-370242 piano hinge assembly.

**3. FLOORS**

**3.01** Booth floors should not be badly worn, torn, or otherwise defective.

**11-Type**

**3.02** Use the P-340285 rubber floor and P-340286 liner to repair booths equipped with bronze tread.

**3.03** Use the P-339595 rubber floor and P-339839 liner to repair booths equipped with stainless steel tread.

**KS-19340**

**3.04** Use the B-558821 rubber floor and the B-558822 floor liner to repair defective or worn floors.

**All Booths**

**3.05** To replace floor in booth:

(a) Remove binding strips, old floor, and liner

(b) Using putty knife, remove adhesive residue from the base and between edge of tread and floor.

(c) Apply a thin, even coat of adhesive EC-194 to the screen impression side of liner. Locate liner centrally with chamfered edge under the tread. Press it down smoothly by treading on it.

(d) Apply adhesive EC-847 in a thin, even coat, spread in a strip 12 inches wide across the front width of liner.

(e) Place edge of new floor under opened door and force tapered edge under the tread. (Exercise care in centering floor.) Let floor fall downward into position. The back and side flaps fold upward. Press floor against liner with foot.

(f) Replace binding strips.

**3.06** Replace booth if tread is badly worn.

**4. SEAT AND SHELF**

**4.01** Examine seat and shelf carefully for loose mounting, and tighten all loose screws and bolts.

**4.02** If required, replace seat using a 101U for the 11-type or a B-557129 for the KS-19340 booth.

**4.03** If required, replace shelf using an 18E shelf for the 11-type or a B-557327 shelf assembly for the KS-19340 type booth.

## 5. CARD FRAME

**5.01** When booths are equipped with card frames, check that frame is securely mounted. Replace any broken or chipped card windows.

**5.02** At locations where glass breakage is frequent, consider replacing the glass (KS-14123, List 2) with plastic (KS-14123, List 3). Where a new card frame is required, order KS-14123, List 4 (card frame with glass window) or KS-14123, List 5 (card frame with plastic window) for the 11-type. For KS-19340 booth, order KS-14123, List 6 (card frame with glass window) or KS-14123, List 7 (card frame with plastic window).

**5.03** Clean dirty card frame windows with mild detergent and warm water.

## 6. ELECTRICAL EQUIPMENT

**THINK** *Before making any repairs or replacements in electrical equipment, disconnect the plug or turn service switch off and verify that circuit is dead by checking with an electric wire tester or approved equivalent.*

## KS-19340

**6.01** Maintenance information for the KS-19207 light and blower unit is contained in the Plant Series Section 508-820-100.

**6.02** Adjust door switch so that switch operates when distance between the edge of the large door and the edge of the door frame is 13 inches  $\pm$  1 inch.

**Note:** Adjust door switch by loosening switch mounting screws, positioning switch, and retightening screws (Fig. 2).

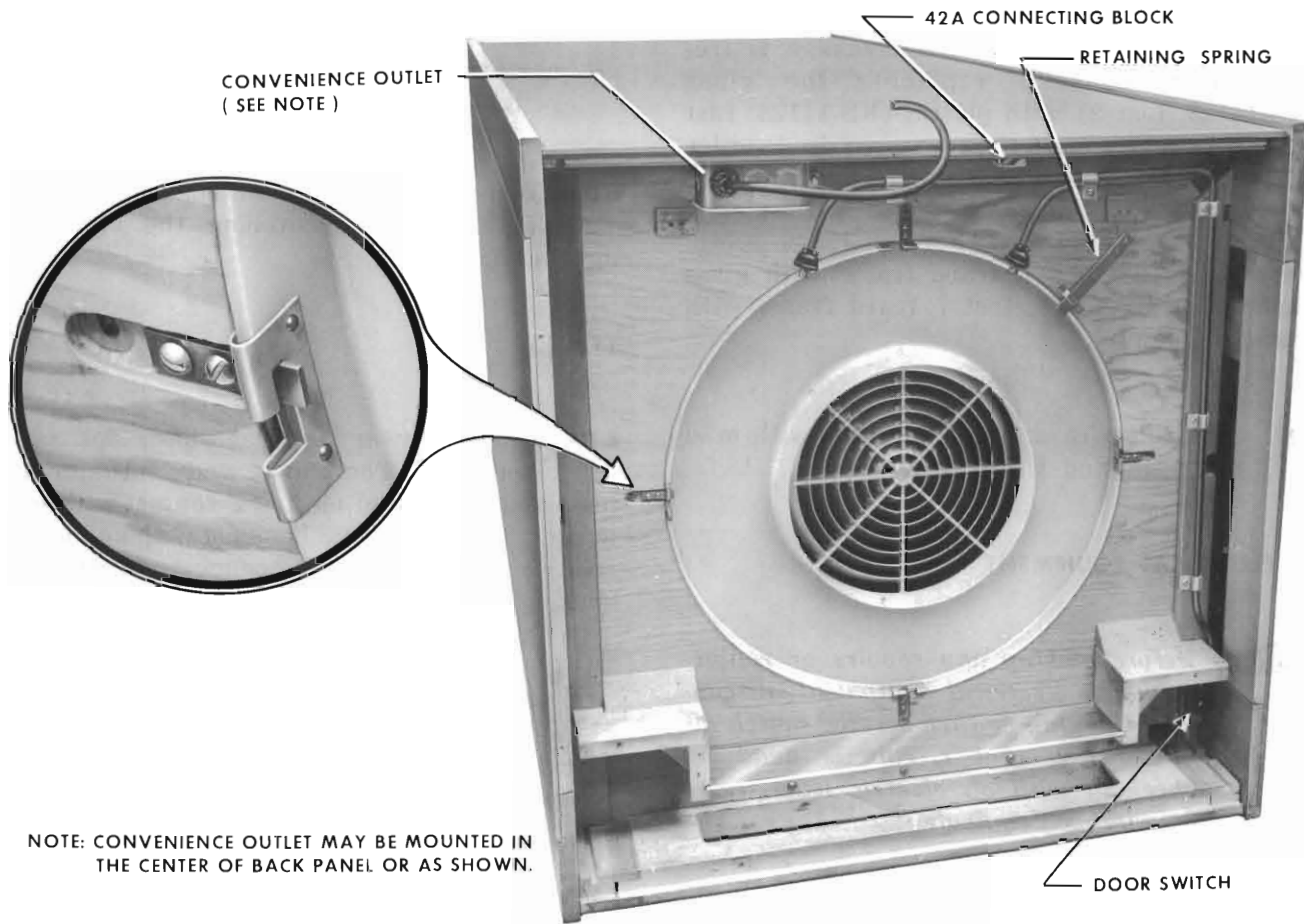
**6.03** Directory lighting maintenance is contained in the section covering the appropriate lighting fixture.

## 11-Type

**6.04** Check blower and ventilator for proper operation. The blower and ventilator housing should be free of electrical contact with power wiring. The test should be made with an approved neon or ac testing device connected between the housing and a grounded part of the light fixture.



*If any electrical contact is found in the above test, disconnect the power to the booth. Correct all defective wiring and replace defective blowers or ventilators.*



NOTE: CONVENIENCE OUTLET MAY BE MOUNTED IN THE CENTER OF BACK PANEL OR AS SHOWN.

Fig. 2 — KS-19340 Booth Ceiling with Roof and Light Frame Removed

6.05 The P-12C414 grounding wire assembly is available for grounding blower, ventilator, and coin collector housings. Installation is covered in the Plant Series Section 508-815-100.

6.06 Field maintenance of the KS-14125 blower is not recommended. When blower fails to function, replace it.

6.07 The KS-14125 blower is shown in Fig. 3.

#### To Replace KS-14125 Blower Unit

- (1) Using KS-8187 wrench, remove the four screws which secure the cover at the bottom



Fig. 3 — KS-14125 Blower

of the blower and remove the cover and blower motor from the blower housing.

- (2) Disconnect the 8-inch assembly cable from the 40-inch extension cable by turning the twist-lock connector counter clockwise to release the locking plug from its socket.

- (3) Reach through ventilator assembly and remove wing nuts and lock washers securing assembly to booth ceiling.

- (4) Remove assembly.

#### To Install New Blower Unit

- (5) Using KS-8187 wrench, remove the four screws which secure the cover at the bottom of the blower and remove the cover and blower motor from the blower housing.

- (6) Insert the remainder of the assembly into the booth ceiling with the mounting studs extending through the holes provided in the flange and through the top side of the ceiling.

- (7) Reach one arm through this part of the assembly and secure the lock washers and wing nuts in place.

- (8) Rest the remainder of the blower assembly on top of the coin collector to bring the plug end of the assembly cable within reach of the twist-lock connector hanging from the ceiling. Insert the plug into the twist-lock connector and lock together by turning clockwise.

- (9) Work the slack of the blower cable back up into the channel behind the blower housing while raising the assembly into place. Make certain that the excess cable does not interfere with the blower operation by pulling all of the

slack into the space between the ceiling and the roof of the booth.

- (10) Reassemble the motor and cover to the blower framework.



*Ground blower by attaching spade clip of P-12C414 grounding wire assembly under lock washer and wing nut. See Fig. 4.*

- 6.08 Adjust door switch so that switch operates when distance between edge of large door and edge of door frame is 13 inches  $\pm$  1 inch.

*Note:* Adjust door switch by removing cotter pin holding switch actuating rod to door. Rotate rod until requirement is met. Reconnect rod and cotter pin (Fig. 4).

- 6.09 Light fixtures with mercury-type switch may not be repaired. If trouble shows beyond switch, replace fixture or entire ceiling assembly.

*Note:* If trouble shows in switch, replace switch.

- 6.10 Maintenance information on the appropriate light fixture is contained in the section on lighting fixtures.

## 7. KS-19340 CEILING ASSEMBLY

- 7.01 The dome assembly shall be cleaned with a mild detergent and water. To remove dome, insert suitable screwdriver into retaining spring hole and raise spring, then rotate dome

1/4 inch counter-clockwise to disengage clips from retaining bars (Fig. 2). Dome removal also allows access for light tube replacement.

- 7.02 A cracked or defective dome shall be replaced using a B-551952 dome assembly.

- 7.03 The sign and Plexiglas shield shall be cleaned with warm water and a mild detergent.

- 7.04 Cracked or defaced signs shall be replaced with a KS-19340, List 51 (TELEPHONE) or KS-19340, List 52 (Blank) sign.

## 8. LININGS



*Booth linings cannot be replaced in the field, therefore booths requiring relining should be replaced.*

### KS-19340

- 8.01 Linings not badly soiled may be polished with an approved detergent and warm water.

### 11-Type

- 8.02 Metal linings not badly soiled may be polished with an approved metal polish (Paste, Metal, Bell System).

- 8.03 Soiled tempered hardboard linings should be cleaned with water and a mild detergent and polished with an approved polish (Paste, Metal, Bell System).



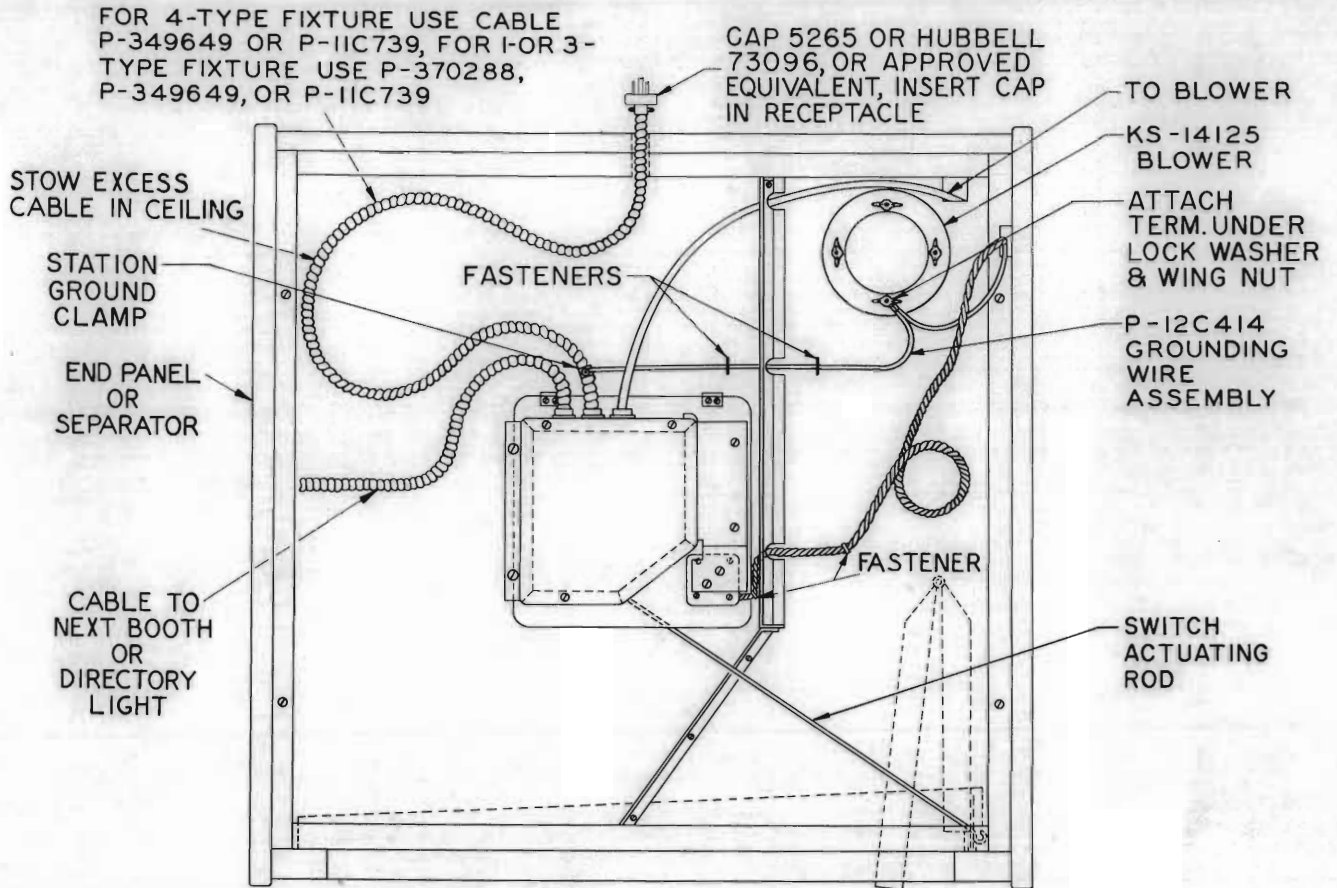


Fig. 4 - 11-Type Booth Ceiling, Roof Removed

## 9. FINAL CHECK

9.01 Upon completion of every booth maintenance visit, a final inspection shall be made as follows:

- Booth must be complete in all parts; clean and free of burrs, sharp edges, projecting nail ends, or screwheads which could present a hazard.
- Ventilator, blower housing, and switch operating rod should be grounded.
- Door must fit properly and operate freely.
- Light and ventilator shall turn off when the door is opened approximately 13 inches. If booth light is controlled by a KS-9786 relay, check operation from attendant's PBX.
- When provided, manual control switches and their associated equipment shall be checked for operation.
- Check blower or ventilator for noise.

