

INDOOR BOOTHS 5, 6, 10, AND 11 TYPES

1. GENERAL

- 1.01 The 5-, 6-, 10-, and 11-type indoor booths are rated MD. The KS-19340 indoor wood booth is a direct replacement.
- 1.02 The 10- and 11-type can be converted to KS-19340 booths, in the service center, per BSRS-457.103.
- 1.03 Information on these booths was formerly contained in the following:
- Identification and Installation—508-110-100—508-110-200
 - Light Fixtures, Ventilator, and Blower—508-110-201
 - Maintenance—508-110-300

These sections are hereby canceled.

2. MAINTENANCE

- 2.01 The approach to the booth shall be free of all hazards.
- 2.02 The local telephone company shall establish appearance and safety standards for all booths.
- 2.03 Clean the booth in accordance with Section 508-100-101.
- 2.04 When the condition of the external surface is such that cleaning is not sufficient, the surface should be sanded and finished.
- 2.05 The air space between the ceiling and the roof should be kept free of excessive dust and dirt.

Door

- 2.06 The door shall operate freely throughout its entire travel without binding or squeaking. When the door binds or squeaks:

- Check that the booth is level. Refer to Section 508-201-100 for proper method of leveling booths.
- Check that the guide pin (Fig. 1) is straight and the roller is free of nicks. For replacement, use P-16A400 guide and B-561730 roller.

Note: If the door is equipped with a rectangular guide pin block (P-370165), remove the guide pin (Fig. 1) and replace the rectangular block with a guide pin roller (B-561730). Relocate the bumper (B-560042) 3/8-inch nearer the center of the door track.

- Thoroughly clean inside of door tracks with KS-7860 petroleum spirits.



KS-7860 petroleum spirits is flammable. Use safety precautions while using.

- Replace broken or defective wooden door stops, using No. 8 oval head steel bronze-finished wood screws.
- Lubricate joints of noisy or binding hinges with KS-14774, List 2 lubricant using a KS-14796 oiler. Replace worn hinges showing a gap of 1/8-inch between barrels with a B-558815 piano hinge assembly.

Floor

- 2.07 Booth floors should not be badly worn, torn, or otherwise defective.
- 2.08 In booths equipped with bronze or stainless steel thread, use the B-558821 rubber floor with the B-558822 liner. Cut floor and liner to fit.

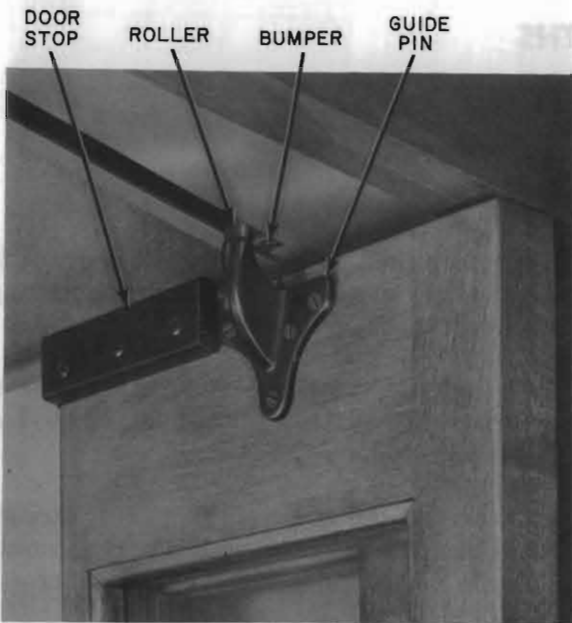


Fig. 1—Upper Door Assembly

2.09 To replace floor in booths with steel bases:

- Remove binder strips, old floor, and liner.
- Remove adhesive residue from steel base and between edge of tread and floor with a putty knife.
- Apply adhesive EC-194 over all the surface of the base and install the liner. Press it down smoothly by treading on it.
- Apply adhesive EC-847 on the front 12 inches of the surface of the liner.
- Place the edge of the new floor under the opened door and force the tapered edge under the tread. (Exercise care in centering floor.) Let floor fall downward into position. Back and side flaps fold upward. Press floor against liner with foot.
- Replace binder strips.

2.10 Replace booth if tread is badly worn.

Seat and Shelf

2.11 Ensure that all mounting screws are secure.

2.12 To replace a seat, use a B-557129 seat assembly.

2.13 When replacing a shelf, use a B-557327 shelf assembly.

Card Frame

2.14 Where booths are equipped with card frames, check to see if the frame is securely mounted, and replace any broken or chipped windows.

2.15 In locations where glass breakage is above normal, consider replacing the glass (KS-14123, List 2 [MD]) with plastic (B-697120). Where a new frame is required, order KS-19928, List 1. Refer to Section 508-811-100.

2.16 Clear dirty windows with mild detergent and water.

Blower and Ventilator



Before making any repairs or replacements in electrical equipment, first disconnect the plug or turn the service switch off and make sure the circuit is dead by checking with an electric wire tester or approved device.

2.17 Check blower and ventilator for proper operation. The blower and ventilator housing should be free of electrical contact with power wiring. The test should be made with an approved neon or ac testing device connected between the housing and a grounded part of the light fixture.



If any electrical contact is found in the above test, disconnect the power to the booth. Correct all defective wiring and replace defective blowers or ventilators.

2.18 The P-12C414 grounding wire assembly is available for grounding blower, ventilator, and coin collector housings.

2.19 If the rubber blades of the KS-8164 ventilator (MD) are cut or damaged the ventilator should be removed.

2.20 Field maintenance of the KS-14125 blower is not recommended. When blower fails to function, replace it.



Make sure blower is grounded. Spade clip of P-12C414 grounding wire assembly should be attached under lockwasher and wing nut as shown in Fig. 2.

2.21 Adjust door switch so that switch operates when distance between edge of large door and edge of door frame is 13 inches \pm 1 inch.

Note: Adjust door switch by removing cotter pin holding switch actuating rod (Fig. 2) to door. Rotate rod until requirement is met. Reconnect rod and cotter pin.

Lighting Equipment

2.22 Light fixtures having the mercury-types switch may be repaired in so far as the replacement of the switch is concerned. If trouble shows beyond the switch, replace fixture or entire ceiling assembly.

2.23 Mercury switch leads in the 215A switch or in the 3-type light fixture shall be located one on each side of the tube, outside of the spring clip fingers and inside the upright yoke members. The leads shall be taped together with a narrow strip of friction tape near end of tube as they leave the switch. Inspect the mercury switch to ensure that it is in good operating condition and that it is not cracked or its leads shorted where spliced to the tube. Replace tube, if defective.

2.24 Cracked or defective lens in the light fixture may be replaced with the proper type as shown below:

Type Fixture	Replacement Lens
1	P-347192
3A	P-347192
4A	P-389569

2.25 If the plate assembly or bezel assembly in the 3A and 4A fixtures is damaged, replace

with the P-371692 plate assembly (3A) and P-339902 bezel assembly (4A).

2.26 Table A lists some additional replacement items in light fixtures.

**TABLE A
COMMON REPLACEMENT PARTS**

PART	LIGHT FIXTURE		QUANTITY REQUIRED
	3-TYPE	4-TYPE	
Hinge	P-474638	P-339775	2
RH Machine Screw		P-210815	4
BHI Machine Screw, 0.112-40 x 1 inch	P-210816		4
Hexagonal Nut	P-210828	P-210828	4
Bracket	P-475732		1
Mercury Switch	P-470164	P-470164	1

Linings

2.27 To replace linings, disconnect electric service and remove blower or ventilating fan, door, seat, card frame, shelf, and subscriber set. It is recommended that coin collector be removed, in order to simplify the operation. Place wedges under separators and end panels to maintain 3/16-inch spacing. Place new lining over old lining. Install linings and replace cove moldings and other equipment in the sequence outlined in Table B.

2.28 Upon completion of every booth maintenance visit, a final inspection shall be made as follows:

- Booth must be complete in all parts; clean and free of burrs, sharp edges, projecting

TABLE B
REPLACEMENT SEQUENCE FOR LININGS AND EQUIPMENT

PARTS AND EQUIPMENT	FASTENERS	
Lining, KS-14723, List 4, right side	Parker Kalon screw nails	No. 15, 3/4-inch PFH
Lining, KS-14723, List 2, left side		No. 15, 3/4-inch PFH
Lining, KS-14723, List 5, rear		No. 15, 3/4-inch PFH
Vertical cove molding, right front	Recessed (Phillips) steel wood screws	No. 6, 1-1/4 inch RH
Vertical cove molding, left rear		No. 6, 1-1/4 inch RH
Ceiling cove moldings		No. 6, 7/8-inch, RH, P-42B363
Vertical cove molding, 25 inches long, right rear (new)		No. 6, 1-1/4 inch RH
Vertical cove molding, 28-1/4 inches long, right rear (new)		No. 6, 1-1/4 inch RH
Binder strips		No. 6, 1-inch RH, P-42B364
Card frame		No. 8, 1-inch FH, P-42B374
Shelf		No. 8, 1-inch, RH
Seat		Re-use old fasteners
Separator and panel		No 9, 1-1/2 inch OH, P-42B371
Replace door, coin collector, subscriber set, and blower or ventilator.	Re-use old fasteners	

Note: Screw heads may be touched up with beige paint to blend in with the linings.

nail ends, or screwheads which could present a hazard.

- Ventilator, blower housing, and switch operating rod should be grounded.
- Door must fit properly and operate freely.
- Light and ventilator shall turn off when the door is opened approximately 13 inches. If booth light is controlled by a KS-9786 relay, check operation from attendant PBX.

- When provided, manual control switches and their associated equipment shall be checked for operation.

- Check blower or ventilator for noise.

Panels and Separators

2.29 For replacement, use KS-19340 panels and separators per Table C.

**TABLE C
REPLACEMENT PANELS AND SEPARATORS**

KS-19340 LIST NO. OF BOOTH		FINISH	MATERIAL	KS-19340 LIST NO. OF MATCHING PARTS		
SIT-DOWN	STAND-UP			SIDE PANEL	BACK PANEL	SEPARATOR*
1	11	None	Birch	21	31	41
2	12	Birch	Birch	22	32	42
3	13	None	Oak	23	33	43
4	14	Oak	Birch	24	34	44
5	15	Walnut	Birch	25	35	45
6	16	Mahogany	Birch	26	36	46

* The separators are for use when booths are installed in multiples; one separator is required for two booths. A separator may be substituted for a finished end panel when the end of the booth is not exposed.

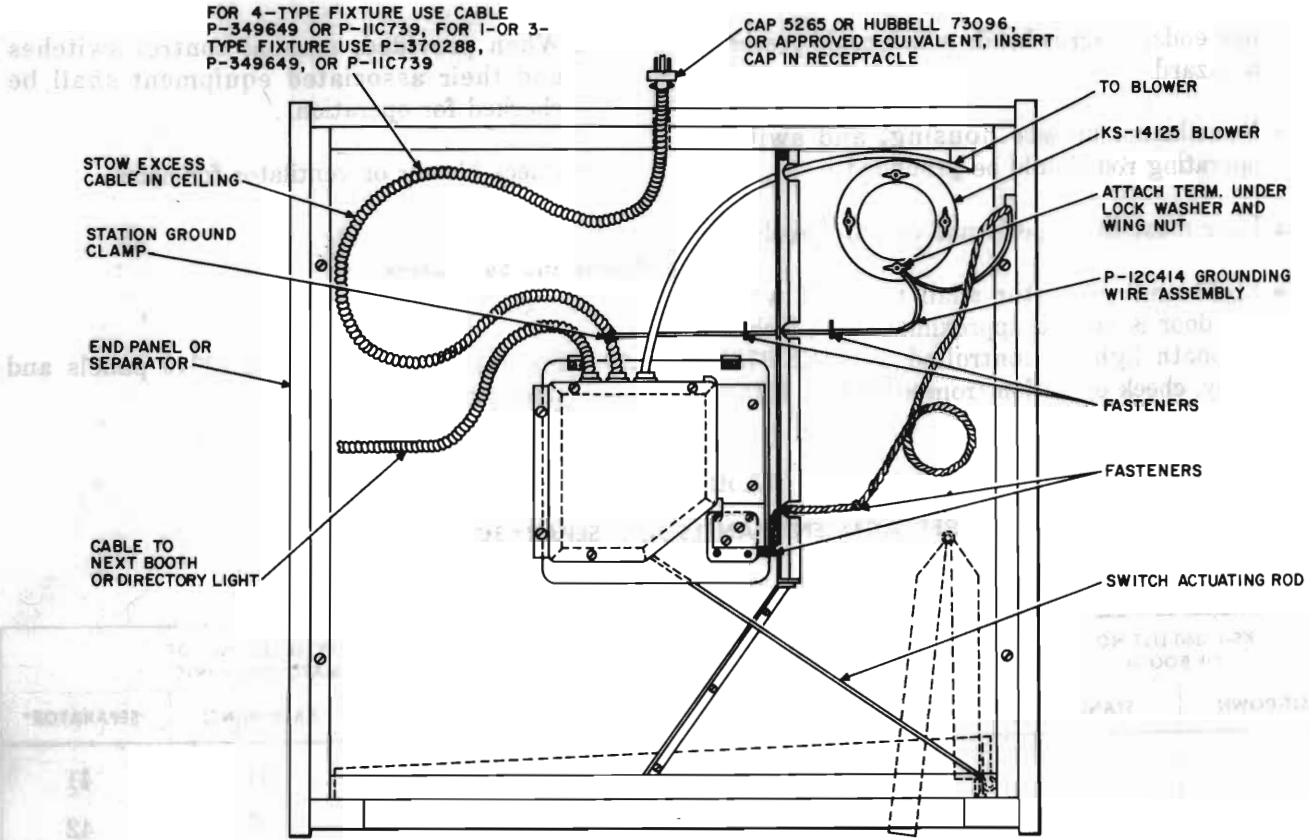


Fig. 2-11-Type Booth Ceiling, Roof Removed