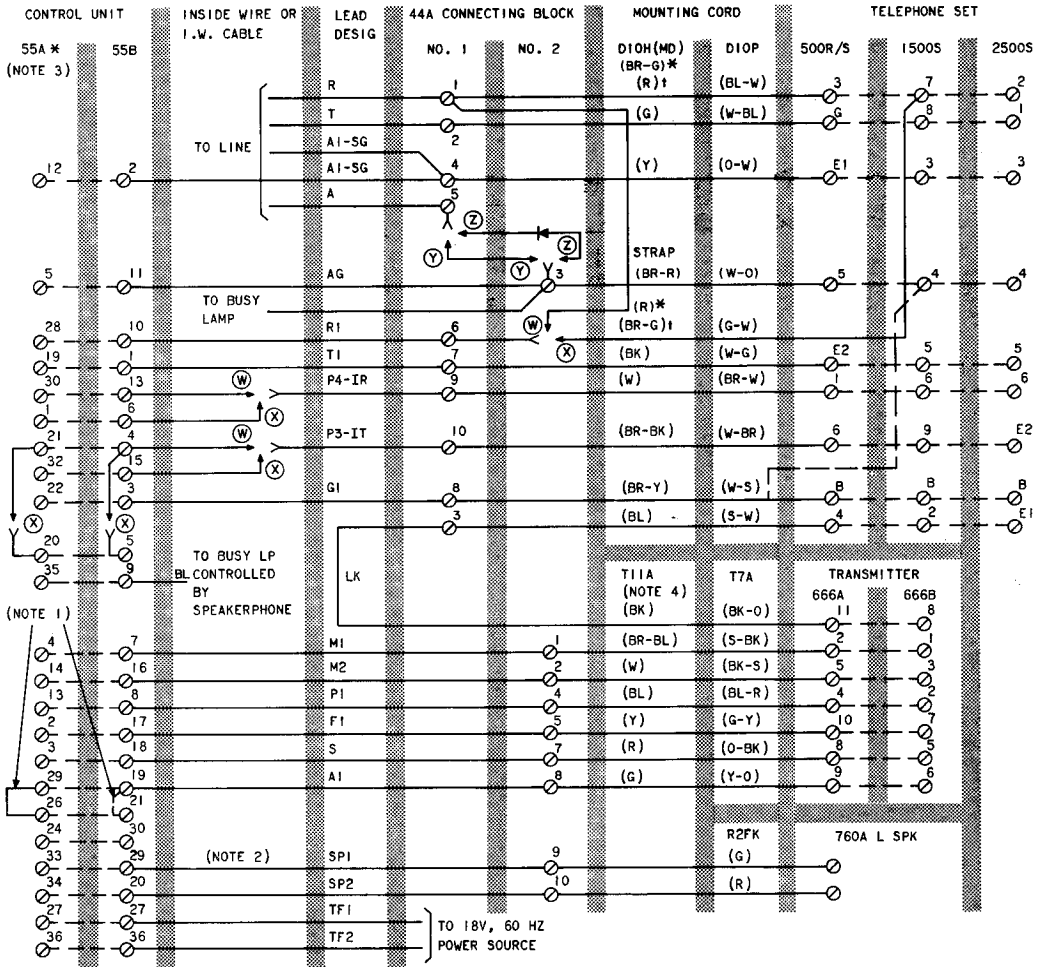


**SPEAKERPHONE SYSTEM 3-TYPE**  
**500R/S, 1500S, AND 2500S TELEPHONE SET**  
**CONNECTIONS**

**1. GENERAL**

**1.01** This section is reissued to add information on the 1500S and 2500S telephone sets, formerly contained in Sections 512-621-402 and 512-622-405 which are hereby canceled.

**1.02** Refer to the appropriate Reference or Service section in the Division 502 for complete wiring information of the telephone set. Information on the components of the 3-type speakerphone system will be found in Section 512-620-100.



NOTES:

1. ADD STRAP FOR BUSY LAMP CONTROLLED BY SPEAKERPHONE ONLY.
2. IF REDUCED LOUDSPEAKER VOLUME IS DESIRED, MOVE SP1 LEAD TO TERM. 30 (55B) OR 24 (55A).
3. MODIFIED FOR TOUCH-TONE USE.
4. INSULATE AND STORE UNUSED LEADS.

- \* COLOR CODE USED ON 500R/S
- † COLOR CODE USED ON 1500S

- (W) 500R/S
- (X) 1500S, 2500S
- (Y) WITHOUT BUSY LAMP
- (Z) WITH BUSY LAMP KS-15724, LI DIODE

Fig. 1—500R/S Telephone Set—Speakerphone Connections