

SPEAKERPHONE SYSTEMS—3-TYPE

832-, 2832-, 833-, AND 2833-TYPE TELEPHONE SETS

CONNECTIONS

1. GENERAL

1.01 This section shows connections between components of the 3-type speakerphone system and the 832-, 833-, 2832-, and 2833-type telephone sets.

1.02 This section is reissued to:

- Show wiring changes which must be made when using speakerphone with BM and CM coded modular telephone sets.
- Revise Table A and Fig. 1 and 2.

1.03 The 832- and 2832-type telephone sets are special 10-, 11-, and 13-button set initially designed to work with the 7A Communication System.

1.04 The 833- and 2833-type telephone sets are special 20-button sets initially designed to work with the 14A Communication System.

2. CONNECTIONS

2.01 Due to lack of available conductors in the mounting cords, the 55B control unit must be installed at the same location as the telephone set. The speakerphone leads are connected to the telephone set using a D10R auxiliary cord (Fig. 1, 2, and Table A).

2.02 Refer to Section 512-620-100 for maintenance and ordering information of speakerphone components used with these sets.

2.03 In order to reduce the tone or voice level on incoming calls while using speakerphone, a wiring change must be made to amplifier. The change uses the (O-W) and (W-O) conductors in the D10R cord and is shown in Table A.

NOTICE

Not for use or disclosure outside the
Bell System except under written agreement

TABLE A
3B SPEAKERPHONE CONNECTIONS (USING AUXILIARY MOUNTING CORD)

CONNECT LEADS FROM				LEAD DESIG	CORD COLORS			CONNECT LEADS TO 55B CONTROL UNIT TERM. ‡
TEL SET TERM. ¶¶	TRMTR TERM.	SPEAKER TERM.	TRNSF TERM.		D1OR	T7A	R2FK	
24				P4*	W-S			13
				IR†				6
30				P3*	S-W			4
				IT†				15
25†				T1	W-BL			1
RR§*								
6				R1	BL-W			10
29				LK	W-BR			35
8				AG	BR-W			11
10				A1	W-G			2
19¶					O-W			32
**					W-O			23
	8			LK		BK-O		35
	7			F1		G-Y		17
	5			S		O-BK		18
	6			A1		Y-O		19
	3			M2		BK-S		16
	2			P1		BL-R		8
	1			M1		S-BK		7
		††		SP2			G	20
		††		SP1			R	29§§
			‡‡	TF1				27
			‡‡	TF2				36

* For rotary dial tel set.

† For TOUCH-TONE tel set.

‡ Strap terminals 4 and 5 on control unit when used with TOUCH-TONE tel sets.

§ Located on network.

¶ Also remove W-S lead from telephone set amplifier terminal 1 and connect it to terminal 19.
 (If telephone set is equipped with D50AL-87 cord, use D-161488 connector instead of terminal 19.)

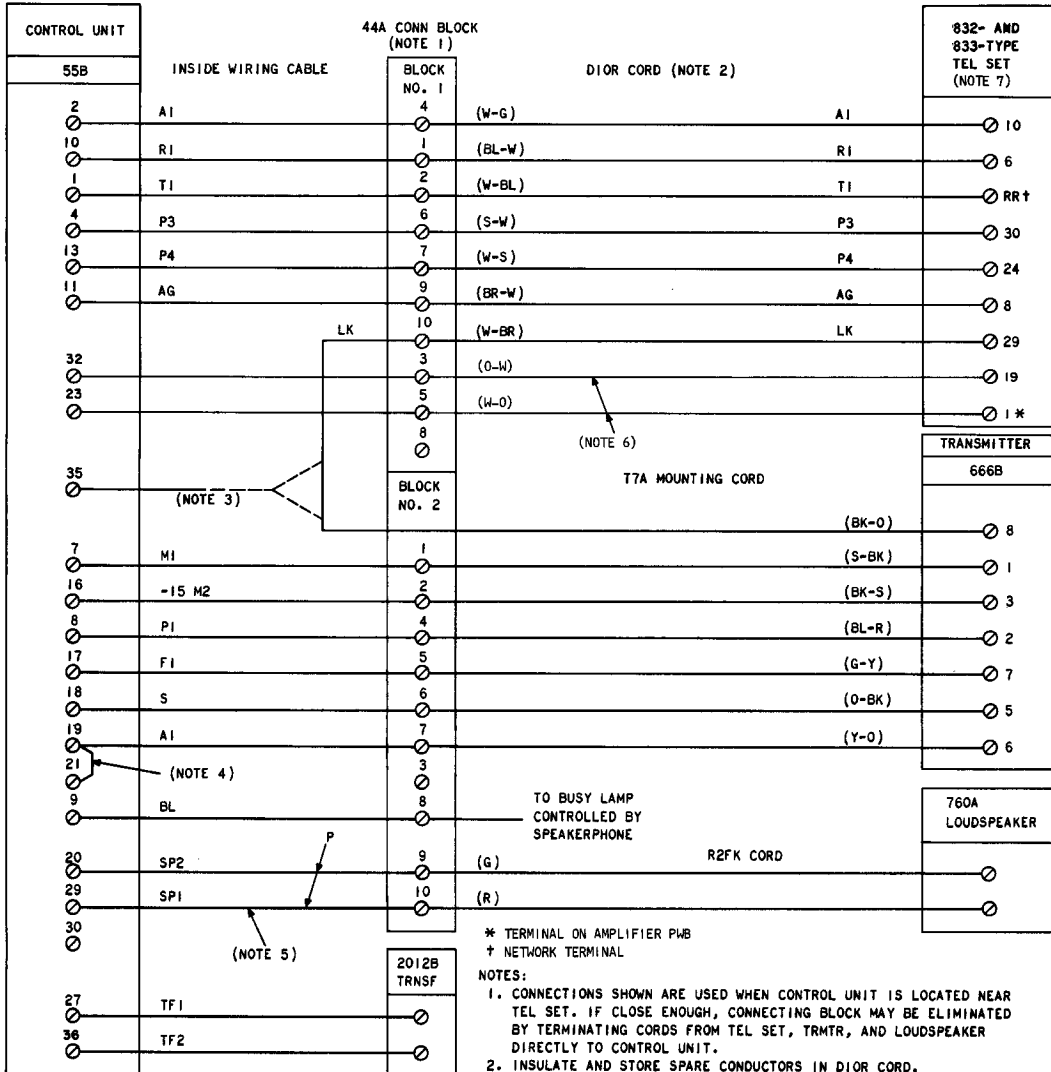
** Connect W-O lead to terminal 1 on tel set amplifier.

†† Speaker terminals are not designated.

‡‡ Use inside wire.

§§ Connect lead to terminal 30 if a reduction in volume is desired.

¶¶ If modular set with new line switch is used, remove (o) lead from terminal 27 and connect to terminal 22.



6. REMOVE (W-S) LEAD FROM TERMINAL 1 OF AMPLIFIER PWB AND CONNECT WITH (O-W) LEAD OF DIOR CORD TO TERMINAL 19 OF TELEPHONE SET.
7. IF MODULAR SET WITH NEW LINE SWITCH IS USED, REMOVE (O) LEAD FROM TERMINAL 27 AND CONNECT TO TERMINAL 22.

Fig. 1—832- and 833-Type Telephone Sets—3-Type Speakerphone Connections

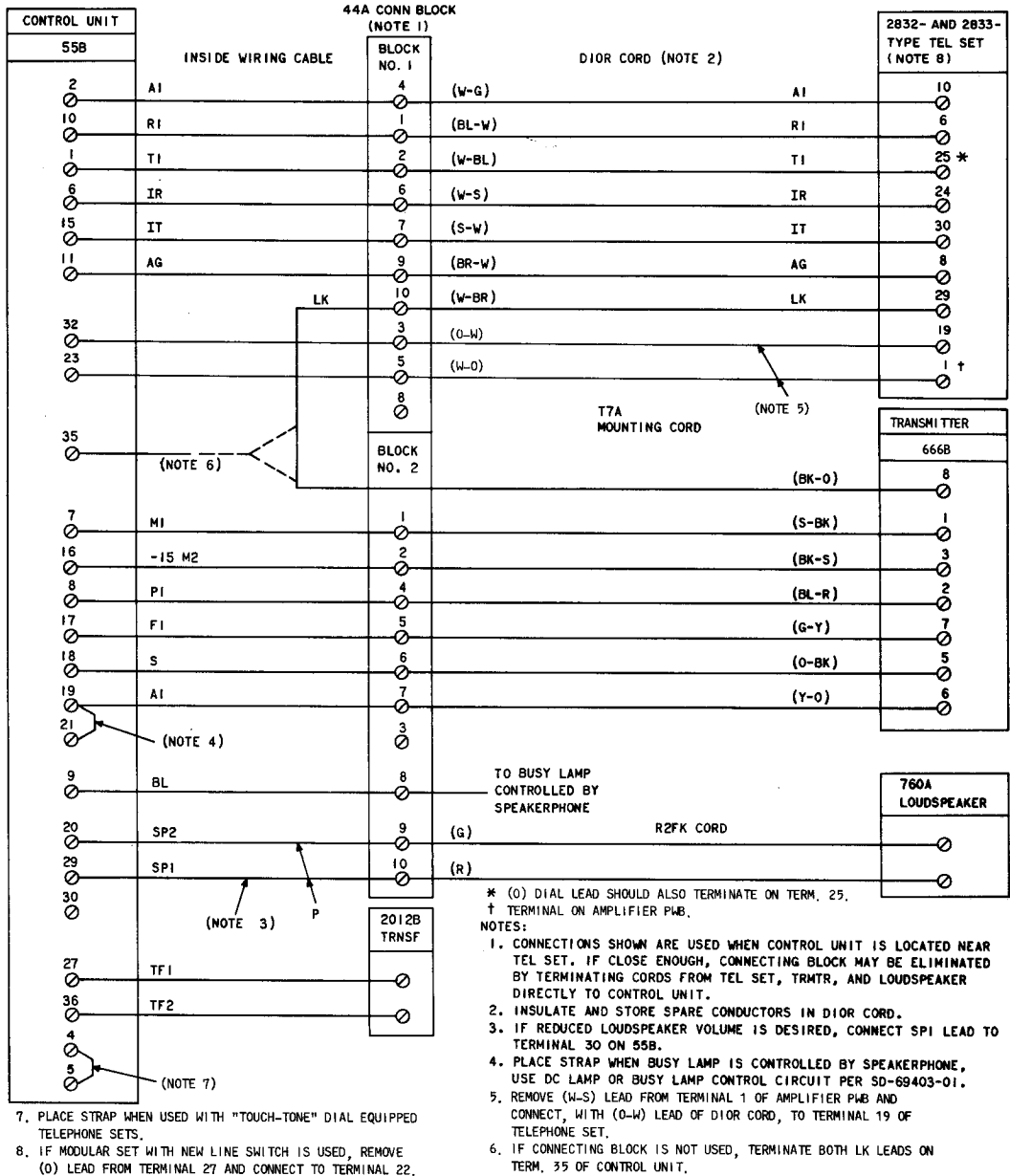


Fig. 2—2832- and 2833-Type Telephone Sets—3-Type Speakerphone Connections