

POLE ATTACHMENTS  
PLACING GUARD ARMS

Part	Page
1. GENERAL .....	1
2. INSTALLING GUARD ARMS.....	1
3. ARRANGEMENT OF GUARD ARMS.	2

1. GENERAL

1.01 This section covers the placing of guard arms on jointly used poles as required in Section 620-200-900PT and other Bell System Practices. The detail plans may also specify the placing of additional guard arms where required by special agreement with supply utilities.

1.02 See the Sections on "Clearances for Outside Plant" for climbing space requirements.

1.03 Where two or more cables, messengers, or other conductors are attached to a pole and a guard arm is required, place the guard arm over the uppermost attachment only.

1.04 At messenger dead ends, including false dead ends, and at certain corner poles, place double guard arms as required in Part 3 of this section.

1.05 On stepped poles where it is necessary to install double guard arms and the pole steps will not be parallel with the arms, shift the pole steps in accordance with instructions in the pole stepping practice to permit climbing past the guard arms with a minimum of interference.

1.06 At a corner where the pull is away from the pole and the need to employ a reinforcing strap prevents the proper installation of a guard arm, use reinforcing links in accordance with instructions in Section 627-220-200.

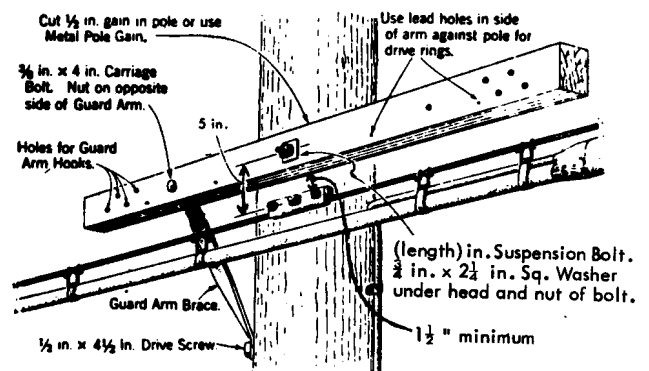
1.07 At a corner where the pull is toward the pole, and the need to employ a guy or a reinforcing strap would prevent the proper installation of guard arms, provide a minimum clearance of 6 feet between the suspension strand including its associated hardware and the power wires supported above the strand, and omit the guard arm.

1.08 At corner poles where guard arms are required (other than at double dead-ends), where one guy bisecting the angle supports the corner, maintain an electrical separation of 4 inches between metallic parts of the guy and the suspension strand or cable. In addition, sectionalize the guy as specified in the 621-405-900PT group on grounding or insulating guys.

At dead-ends, double dead-ends, and false dead-ends, see the 621-405-900PT group on grounding or insulating guys as to whether guys and strand may be electrically connected or require 4 inches of separation.

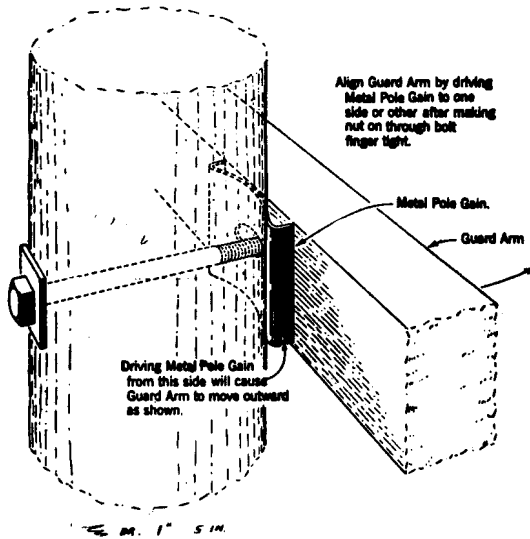
2. INSTALLING GUARD ARMS

2.01 Install guard arm as shown below:



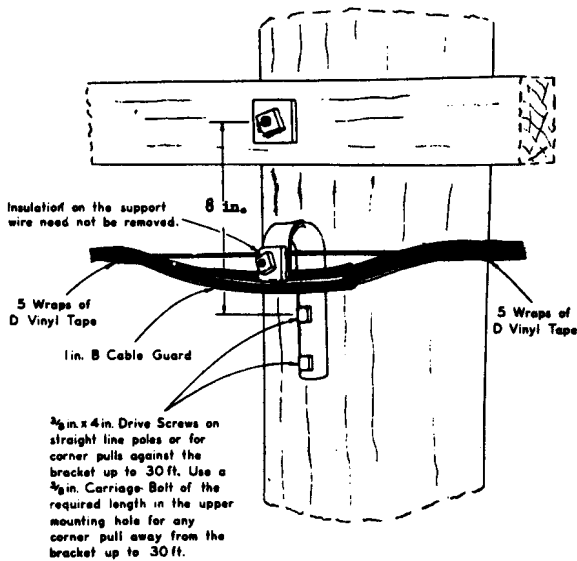
Note: In placing brace proceed as follows—  
 (1) Fasten brace to Guard Arm.  
 (2) Bend to approximately middle of face or back of pole.  
 (3) Provide 1 1/2" or more clearance from cable and strand.  
 (4) Fasten to pole.

(a) A metal pole gain installed as shown below may be used to avoid the necessity for cutting a gain in the pole.



2.02 When a guard arm is required above B Urban or B Rural Wire, place the B Wire Bracket upside down and place the guard arm as shown below.

NOTE: See Paragraph 2.01 for details on installation of guard arms.



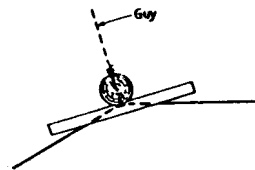
### 3. ARRANGEMENT OF GUARD ARMS

3.01 On straight line poles (other than at dead ends or false dead ends) or where the pull on the pole is less than 10 feet, place the guard arm parallel to the cable, or essentially so, to obtain equal guarding in both directions.

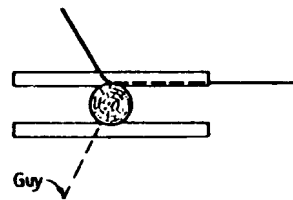
3.02 At corners where the pull is more than 10 feet, place guard arms as covered in the following:

(a) Corner Poles - Pull Away from the Pole

(1) Where the pull on the pole is between 10 feet and 38 feet.

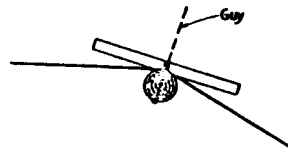


(2) Where the pull on the pole is more than 38 feet.

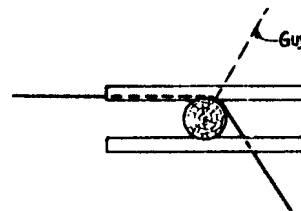


(b) Corner Poles - Pull Against the Pole

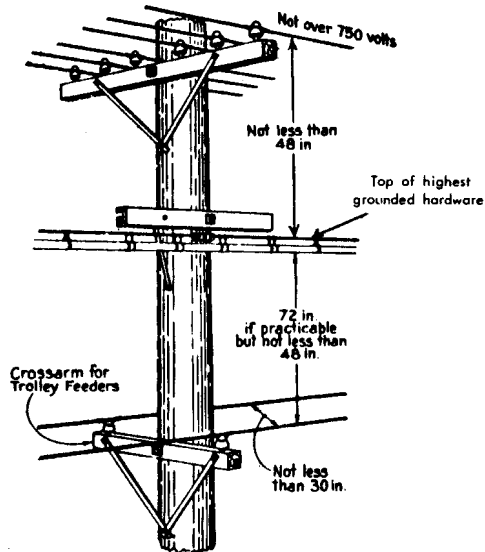
(1) Where the pull on the pole is between 10 feet and 38 feet.



(2) Where the pull on the pole is more than 38 feet.

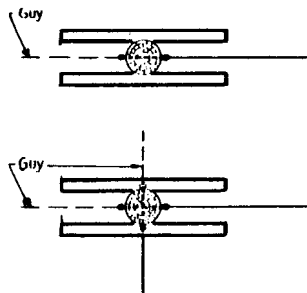


3.03 Where conditions are such that cable is to be placed between trolley feeders and 0 to 750 volt supply circuits, and a 6-foot clearance cannot be obtained both above and below the cable, provide the greater clearance between the cable and the trolley feeder and place a guard arm over the cable as shown below:



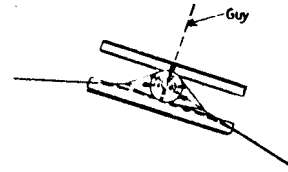
3.04 Where strand dead-ends are made on joint poles less than 6 feet below 0 to 750 volt power wires, place guard arms as follows:

(a) At strand dead ends including slack span dead ends.

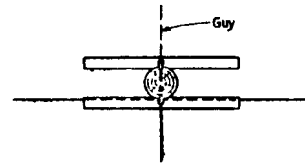


NOTE: Where the strand is dead ended below double open wire cross-arms, no additional guarding of the strand is required.

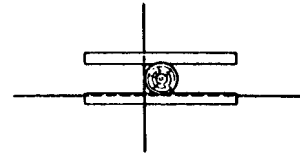
(b) At angles or corners.



(c) Branch strand termination.



3.05 Where a main and a branch (or other) cable are attached to a junction pole, place guard arms as shown below:



3.06 Where a false dead end is placed on the suspension strand, place the guard arms as follows:



NOTE: Place the guard arm bolt 3 inches above the bolt used for the down guy. When a B Guy Strap is used it should be reversed so that all grounded hardware will be below the top of the guard arm.