

## COIN COLLECTORS — POSTPAY — 182C, D

### MANUAL — MAGNETO — CONNECTIONS

#### 1.00 INTRODUCTION

This section covers the combination of apparatus, circuit diagram, and connections for the 182C and D coin collectors when used for manual postpay service as a magneto station.

#### 2.00 GENERAL

2.01 Connections for this service require some changes in the wiring of the coin collector; therefore, the circuit diagram herein should be followed closely.

2.02 This coin collector may be used with the 400A, K, and CD or 415H and CD subscriber sets as a magneto station. When used for this service, the induction coil and capacitor in the coin collector are not used in the circuit.

2.03 The 37A varistor, shown in the circuit diagram, is not required at postpay coil collector stations; however, coin collectors which are equipped with the varistor may be used for this service.

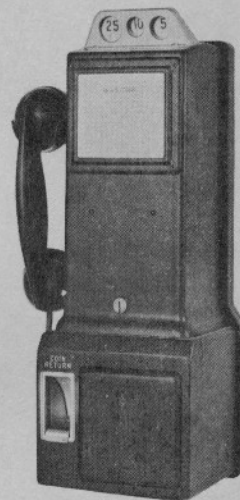


FIG. 1—182C, D—MANUAL SET

TABLE A—COMBINATION OF APPARATUS—LOWER HOUSING AND BACKPLATE

Type Collector	Components				
	Handset	Handset Cord	Induction Coil	Capacitor*	Varistor
182C, D	F1B	H3AE	101B	152C or 195C	37A

\*Standard equipment, not wired in circuit, when set is used as a magneto station.

TABLE B—COMBINATION OF APPARATUS—UPPER HOUSING

Type Collector	Components			
	Apparatus Blank	Card Holder	Coil Chute	Coin Gauge Guard
182C	50C	1B	KS-8487, L2	P-338883
182D				P-338884

3.00 CONNECTIONS

3.01 The circuit diagram in this section is shown on a foldout page so that it may be associated with the circuit diagram of the appropriate subscriber set, to provide complete information for the connection of station apparatus.

3.02 The designations on the transfer contact terminals in some upper housings are different from those shown herein. Corresponding terminals are as shown in Table C.

TABLE C—UPPER HOUSING

Upper Housing	Terminals				
Original	W	Y	BK-YY	BB-YY	5*
Replacement	W	Y	YY	BB	BK-YY

\*Terminal 5 is not always furnished.

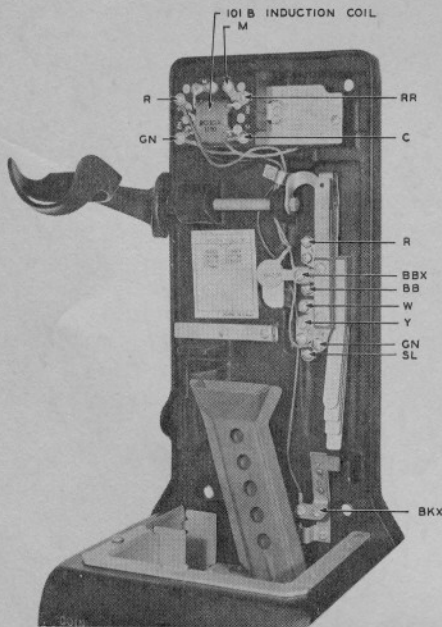


FIG. 2—182C, D—LOWER HOUSING AND BACKPLATE TERMINALS

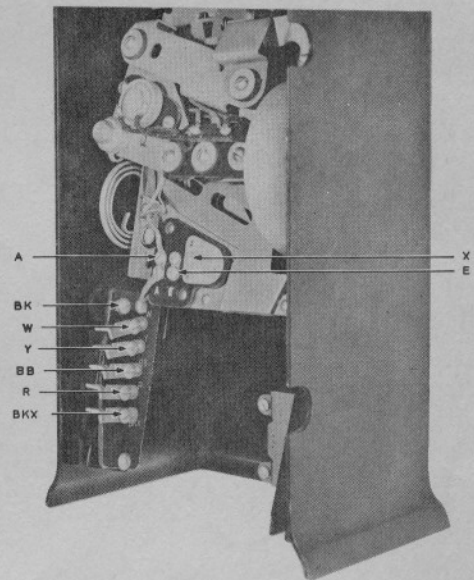


FIG. 3—182C, D—UPPER HOUSING TERMINALS

3.03 Circuit diagram of 182C, D coin collectors when used with 400A, K, CD, or 415H, CD subscriber sets.

