

COIN COLLECTOR - 223G TYPE

1. GENERAL

- 1.01 This section provides information for the installation and maintenance of 223G type coin collectors.

2. INSTALLATION

- 2.01 Sketches herein illustrate connections for 223G and 197GN coin collectors used in semipublic, booths with subset under shelf and booths with subset in the ceiling.
- 2.02 The 223G coin collectors are shipped with aluminum backboards when used for semipublic service.
- 2.03 All 223G type coin collectors are equipped with spring cords.

3. MAINTENANCE

- 3.01 Coin Relay P10C117, used in the 223G coin collector, is a four spring relay, two springs being normally made to short circuit the dial pulse contacts. Relay P145749 presently used in the 197GN shall be used to replace a defective P10C117 relay. The new coin relay P10C117 will not be available individually for maintenance purposes until the third quarter of 1957. Repairmen shall notify their Foremen of the location and telephone number of the collector when a P10C117 relay is replaced by a P145749 relay. The Foreman shall maintain a record of these cases and arrange to have a new type relay installed when available.
- 3.02 Maintenance practices for the 223G type coin collector are the same as those covering 197GN collectors. The dial pulse contacts are ineffective until the coin relay is operated.
- 3.03 The G type handset receiver and transmitter caps can be locked by using adhesive EC-847. Apply the adhesive over a $\frac{1}{2}$ to $\frac{3}{4}$ inch length from the top to the base

of the handset thread. Excess adhesive may be removed with
KS8372 Trichlorethylene.

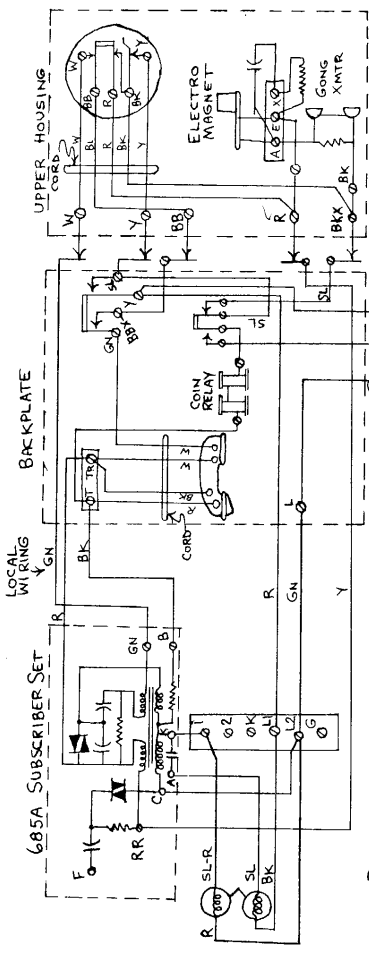
4. SUPPLIES

Tube Cement MM & M Co.
EC-847 Adhesive 2 oz. tube (S,EX)

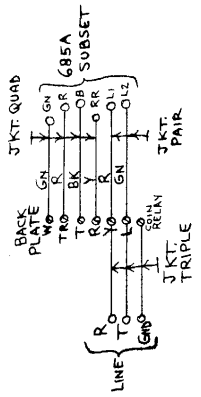
Collector, Coin 223G
Relay, Coin P10C117 (NS,X)

COIN COLLECTORS
197 GN & 223G

CONNECTIONS FOR BOOTHS
WITH SUBSET UNDER SHELF
AND SEMI-PUBLIC COIN



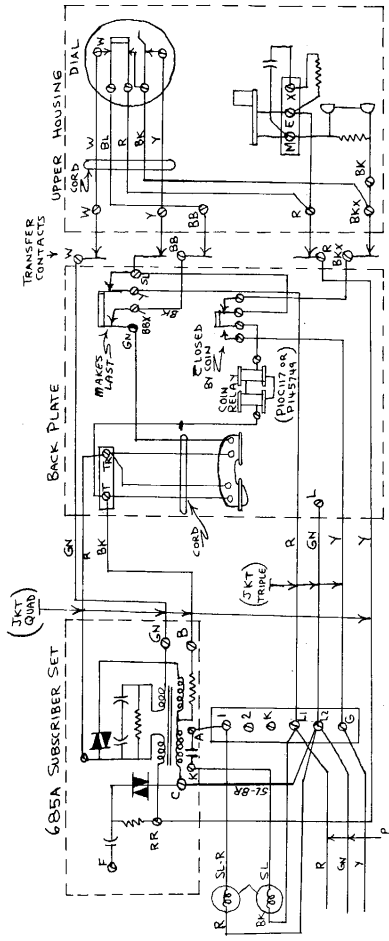
BOOTH WIRING



NOTE: FOR 197GN SETS, COIN RELAY
BREAK CONTACTS AND SL LEADS
TO BKX AND SL TERMINALS ARE
OMITTED

COIN COLLECTORS: 197GN
223G

SUBSETS IN CEILING



NOTE: FOR 197GN SETS
COIN RELAY BREAK CONTACTS AND SL
WIRES TO BKX AND SL TERMINALS ARE OMITTED