

BELL SYSTEM PRACTICES ADDENDUM C63.289
Station Installation and Maintenance Issue 1, August, 1954
AT&T Co Standard

**L.B.T., C.B.S. ANTISIDETONE
STATIONS
BALANCING NETWORK AND BATTERY
SUPPLY FILTER CONNECTIONS**

1. GENERAL

1.01 This addendum supplements Section C63.289, Issue 6. It is issued to include information on the use of key telephone units as a battery feed filter for local battery talking sets and to revise 3.01 and 3.02, Fig. 1 and note. Part 4, Part 5, and Fig. 1a and note were added.

3. BATTERY FEED FILTER

3.01 Change to read as follows: Where one or more L.B.T. antisidetone stations receive transmitter battery supply from a common source such as from a local storage battery, rectifier, or over cable pairs from a central office battery, a filter is necessary in each transmitter circuit. This filter consists of either a 2A or 12A key telephone unit in conjunction with a 27A key telephone unit as shown in Fig. 1a. Fig. 1 is shown only for maintenance purposes. Provision is made in the 634BD subscriber set to mount a resistor to control the value of the transmitter current as indicated in Fig. 1.

Change the following Fig. 1 and Note:

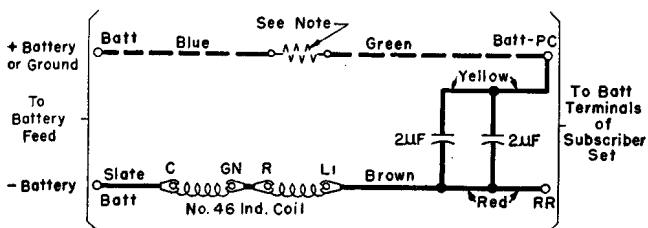
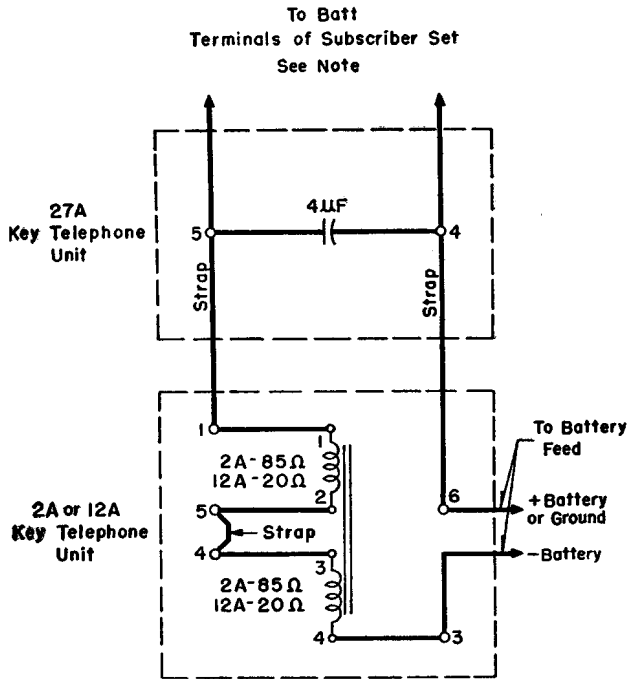


Fig. 1—634BD Subscriber Set (Battery Feed Filter)

Note: If a resistor is required to adjust transmitter current to 100 to 125 mils, connect as shown by dotted lines. If a resistor is not required, connect the positive (grounded) battery feed conductor directly to the Batt-PC terminal. Connect each of the terminals, Batt-PC and RR, of the 634BD set to each of the battery terminals of the wall set or subscriber set as follows: From the circuit drawing of the subscriber set or wall set involved, determine which battery terminal is wired to the induction coil; then connect this terminal to RR of the 634BD set at tip parties, and connect it to Batt-PC at ring parties. Where 307- or 309-type telephone sets are used, connect the blue mounting cord conductor to terminal RR of the 634BD set, and the black conductor to Batt-PC at tip parties. At ring parties connect the blue conductor to Batt-PC, and the black to RR.

Add Fig. 1a and Note:



Note: From the circuit drawing of the subscriber set or wall set associated with the battery feed filter, determine which battery terminal in the subscriber set or wall set is wired to the induction coil; at tip parties connect this battery terminal to terminal 5 of the 27A KTU, and connect the other battery terminal in the wall set or subscriber set to terminal 4 of the 27A KTU. Reverse these connections at terminals 4 and 5 of the 27A KTU for ring parties. When 307- or 309-type telephone sets are used, connect the blue mounting cord conductor to terminal 5 of the 27A KTU, and the black conductor to terminal 4 at tip parties. At ring parties the blue conductor connects to terminal 4, and the black to 5.

3.02 Change to read as follows: Station apparatus which may be used with battery supply filters is shown in Figs. 2 to 8, inclusive. In addition, 308E, F, G, or H telephone set may be used; and 309- or 357-type telephone sets equipped with F2B handsets may be used.

4. INSTALLATION: Add the following installation part to this section.

4.01 The key telephone units may be mounted in a 105-type apparatus box or in accordance with the Sections C53.506, Key Equipment and Station System Cabinets, Description, and C53.507, Key Equipment and Station System Cabinets, Installation.

4.02 Reference may be made to the Sections C53.151, 1A Key Telephone System, Description, and to C53.153, 1A Key Telephone System, Installation, for the proper method of installing and wiring 105-type apparatus boxes and key telephone units.

4.03 The 2A key telephone unit is recommended for a battery feed coil where the voltage range is 14 to 26 volts. The 12A key telephone unit should be employed as a battery feed coil when dry cells are furnished.

5. SUPPLIES: Add the following supply part to this section.

5.01 The apparatus required for the battery feed filter circuit Fig. 1a is as follows:

Index

Ordering Information and Description

Backboards	Backboard, KS-5796, List 2. Black finish, wooden backboard for 105A apparatus box.
	Backboard, KS-5796, List 8. Beige gray finish, wooden backboard for 105B apparatus box.

Boxes **Box, Apparatus, 105A.**
 Black finish. For mounting key telephone units.

Box, Apparatus, 105B.
 Beige gray finish. For mounting key telephone sets.

Screw **P-140692, Screw.**
 RH machine screw, .192-32 x 3/16 in. For mounting each key telephone unit. (2 required.)

Units **Unit, Telephone, Key, 27A.**
 Consists of one mf condenser wired and equipped with mounting bracket and terminals.

Unit, Telephone, Key, 2A
 For battery feed on intercommunicating line 14-26V.

Unit, Telephone, Key, 12A.
 Dry cell battery feed coil.