

2A, 12B, AND 31A KEY TELEPHONE UNITS

BATTERY FEED CIRCUITS

23A KEY TELEPHONE UNIT

NOISE SUPPRESSION CIRCUIT

CONNECTIONS

1.00 GENERAL

1.01 The 2A KTU is a 14- to 28-volt dc battery feed circuit, the 12B is a 4.5-volt dc battery feed circuit, and the 31A is a 14- to 26-volt dc battery feed relay circuit. The 31A was designed for busy lamp circuits, opening of time-out circuits, or other features as required. The 23A KTU is a noise suppression circuit. When required it is installed across the battery supply.

1.02 This section is reissued to show the KS-16485 nonpolarized capacitor in the 23A KTU instead of the KS-14136 polarized electrolytic capacitor.

2.00 CONNECTIONS

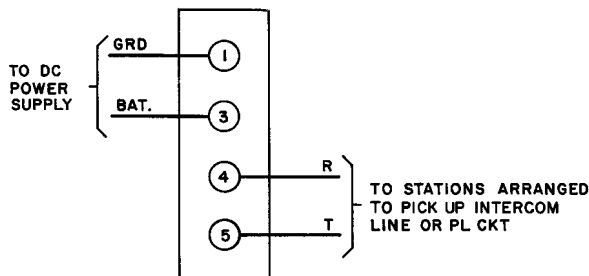


Fig. 1 - 2A or 12B KTU Connections
 Ref: CD- and SD-69091-01

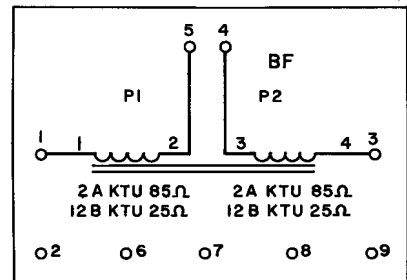


Fig. 3 - 2A or 12B KTU Battery Feed Coil Circuit

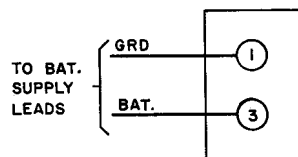


Fig. 2 - 23A KTU Connections
 Ref: CD- and SD-69091-01

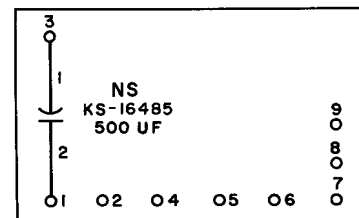


Fig. 4 - 23A KTU Noise Suppression Circuit

SECTION C71.336.03

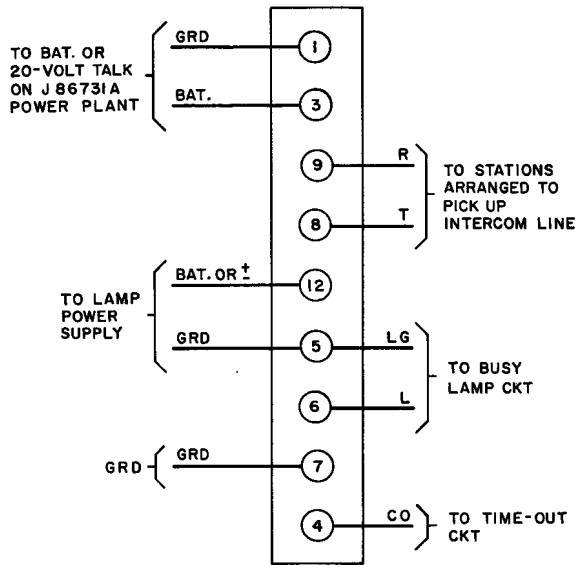


Fig. 5 - 31A KTU Connections
Ref: CD- and SD-69091-01

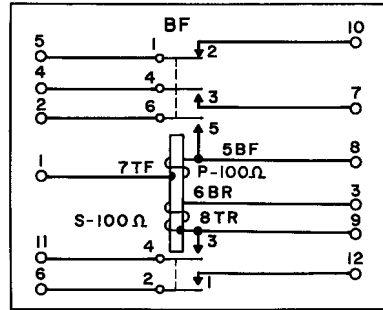


Fig. 6 - 31A KTU Battery Feed Relay Circuit