

22-TYPE KEY TELEPHONE UNITS

DC LAMP RESISTANCE CIRCUIT

CONNECTIONS

1.00 GENERAL

1.01 A 22-type KTU is required when a dc power supply as shown in Table A is used for lamps in key telephone sets. They are also required for K2 lamps in indicators operating from a 48-volt dc power supply. Install one resistor in series with each lamp.

1.02 When three or more stations are located near each other, the *L* and *LG* leads from the 22-type KTU or the connecting block may be common. However, the total loop resistance in ohms shall not exceed 10 ohms divided by the number of lamps being served by the common lead. When common *L* and *LG* leads are used, the *L* terminal for each lamp served must be strapped together at the 22-type KTU.

TABLE A
BATTERY SUPPLY FOR 22-TYPE KTU

Lamps	Battery Supply		22-type KTU
	cells	volts	
51A	8	15 to 19	22F
	9	17 to 21	22G
	10	19 to 24	22H
	11, 12, or 13	21 to max of 26	22J
	23	47.5 to 50 regulated	22K
K2	23	47.5 to 50 regulated	22J

2.00 CONNECTIONS

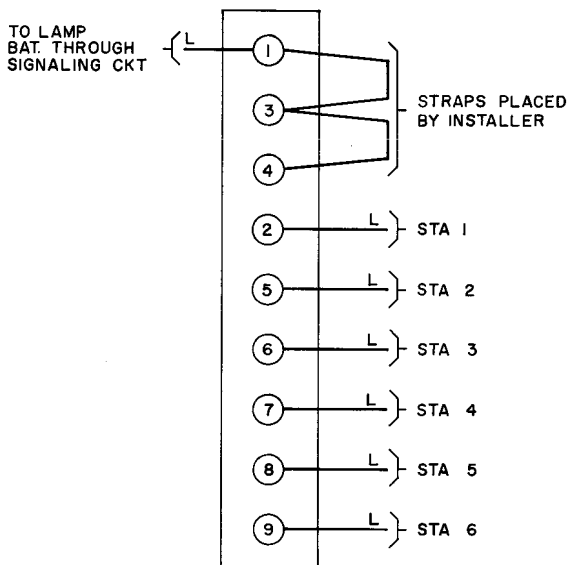


Fig. 1 — 22F through 22K KTU Connections
 Ref: CD- and SD-69091-01

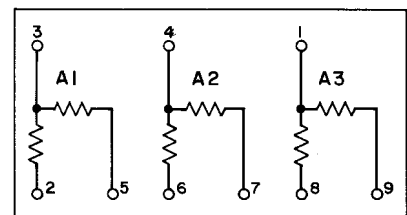


Fig. 2 — Resistance Units:
 22F KTU — 19RK Res
 22G KTU — 19AH Res
 22H KTU — 19PG Res
 22J KTU — 19DS Res
 22K KTU — 19BA Res