

50-TYPE KEY TELEPHONE UNITS

(STRIP MOUNTED)

CONNECTIONS

1.00 GENERAL

1.01 Strip-mounted key telephone units are assembled on 19-inch mounting plates. They are usually mounted in the 4- or 11-plate apparatus cabinets or on relay racks.

1.02 The power connections shown in Fig. 1 are the ones most commonly used. When the 101G power plant is used, battery and ground shall

be from the 20-volt dc talk supply. The $18V \pm$ or $105V \pm$ should be used for audible signal supply and the 20-volt dc supply used for relay battery on the 57A KTU as shown in Fig. 1. No fusing is required other than fuses in the 101G power plant.

1.03 When central office or building battery is used and the fuses at the supply are not readily accessible, fuse as shown in Table A.

TABLE A
 FUSING ARRANGEMENT FOR CENTRAL OFFICE OR BUILDING BATTERY

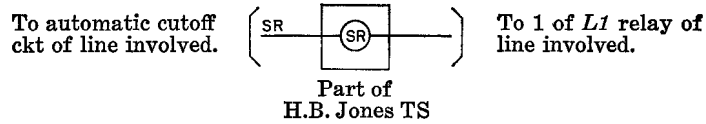
See Note	Lead Desig	51A TSA	51A TSB	52A	53A	54A	55A	57A TSA	57A TSB
△	GRD	13	13	13	13	13	13		
	BAT.	19							
	BAT.		19						
	BAT.			19					
	BAT.				19				
	BAT.					19			
	BAT.						19		
	GRD		14-22						
	BAT.		16-20*						
†	Lamp GRD	15	15	15	15	15	15		4
	BAT.	18	18	18	18	18	18		3
△	GRD								19
	BAT. A								20
	GRD								21
	BAT. B								22
	GRD								24
	BAT. C								25

△ One 2-amp fuse per circuit.

* Do not strap 19 to 20 on 51A KTU TS B.

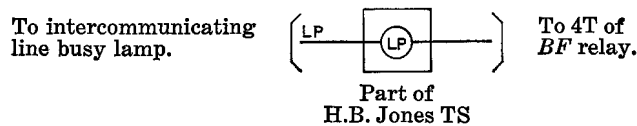
† One 2-amp fuse per 36 51A lamps; or when lamp battery is 48 volts dc from central office, fuse with 1-1/3 amp fuse.

* 51A KTU TS A or TS B or 52A KTU.



† Connections shown are for J86731A, List 4 or List 6 power plant. If central office or building battery is used and fuses at supply are not readily accessible, fuse as shown in Table A. If fuses at supply are readily accessible and the maximum current drain to a system does not exceed 1.6 amperes, no circuit fuses at equipment are required.

‡ For line busy lamp on intercommunicating line, add wiring on 51A KTU as follows:
 3 top of *BF* relay to 1 bottom of *SR* relay.
 4 top of *BF* relay to TS A (28) or H.B.
 Jones terminal (lp lead).



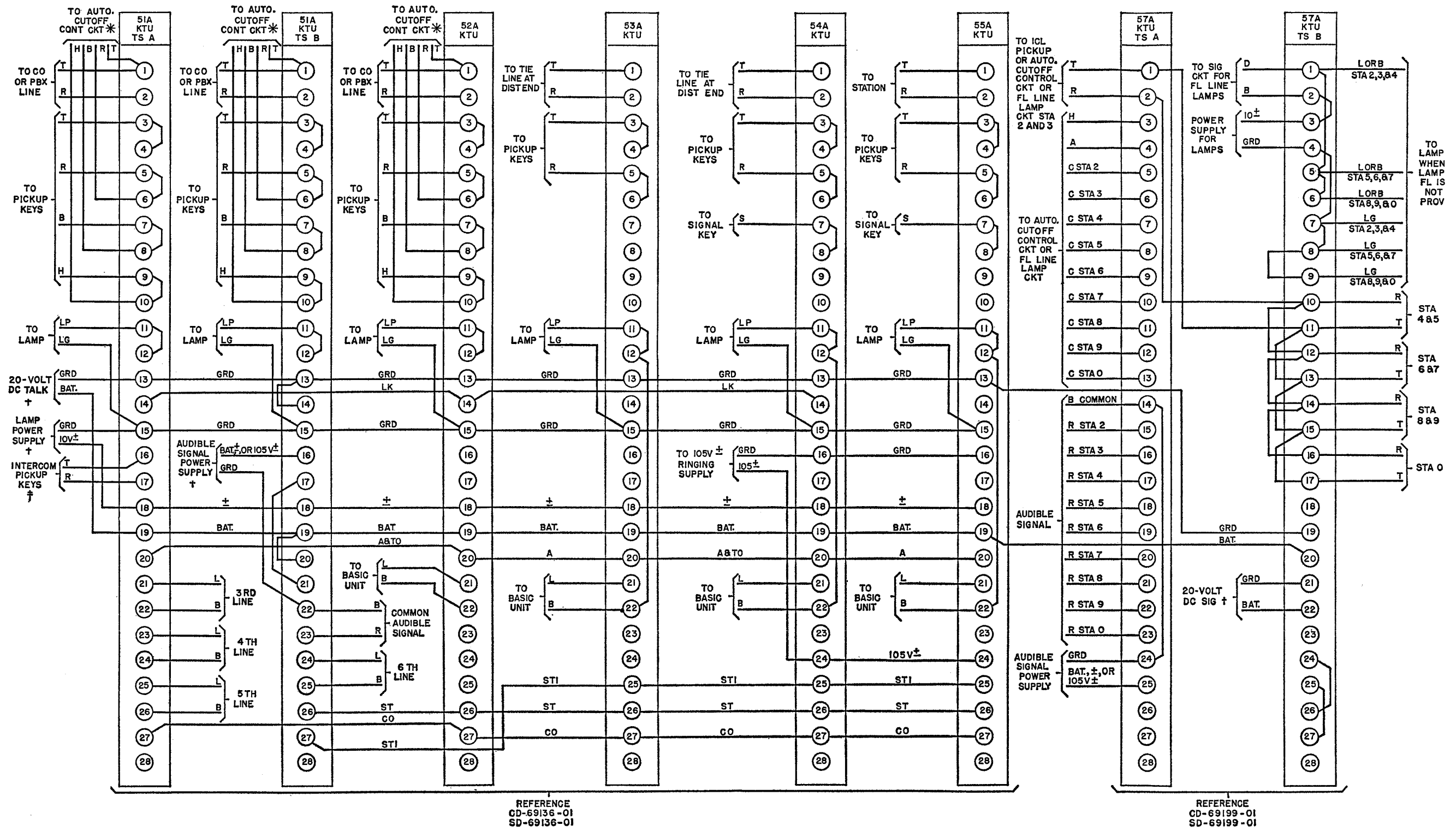


Fig. 1 - 50-type KTU Connections

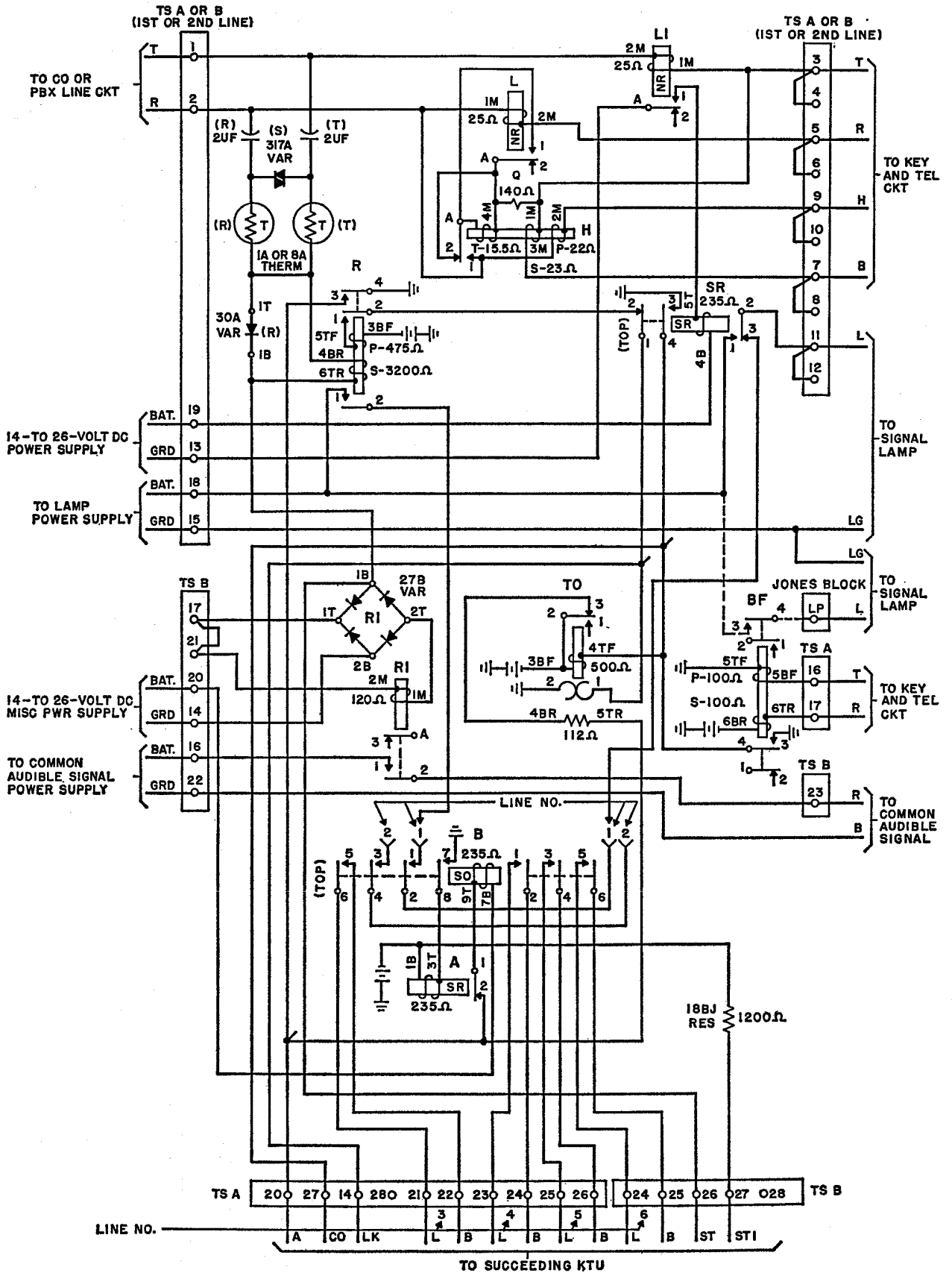


Fig. 2-51A KTU

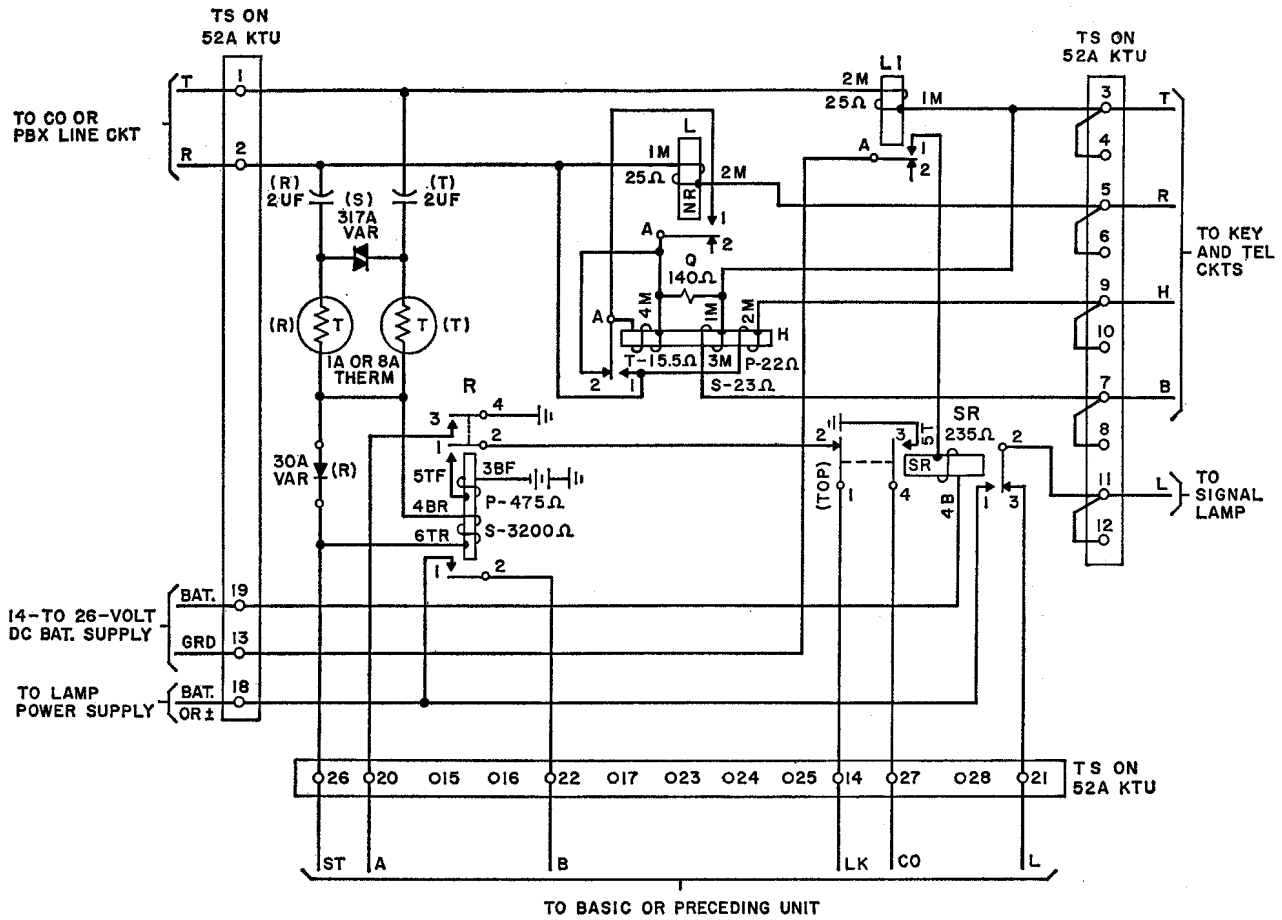


Fig. 3 - 52A KTU

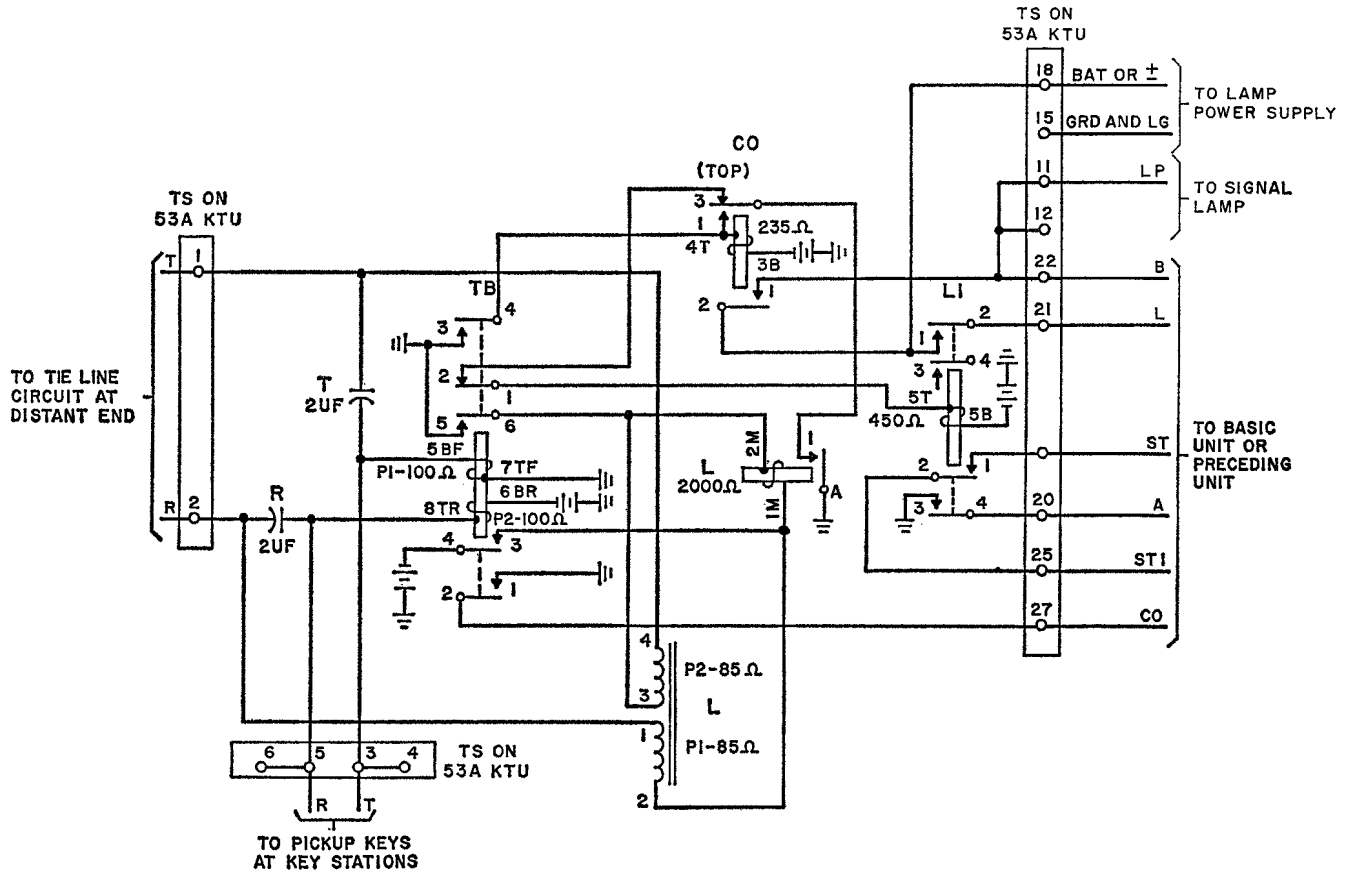


Fig. 4 - 53A KTU

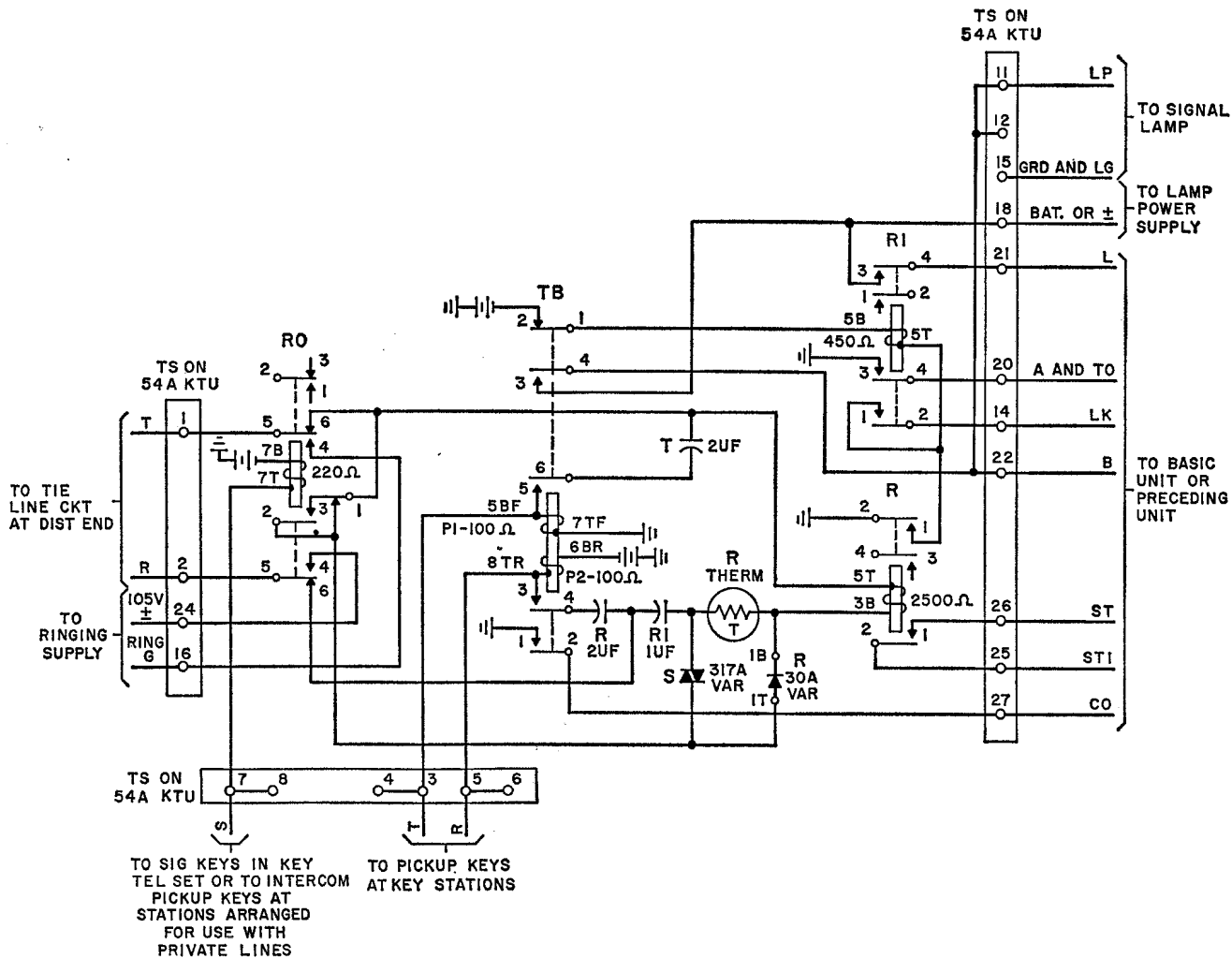
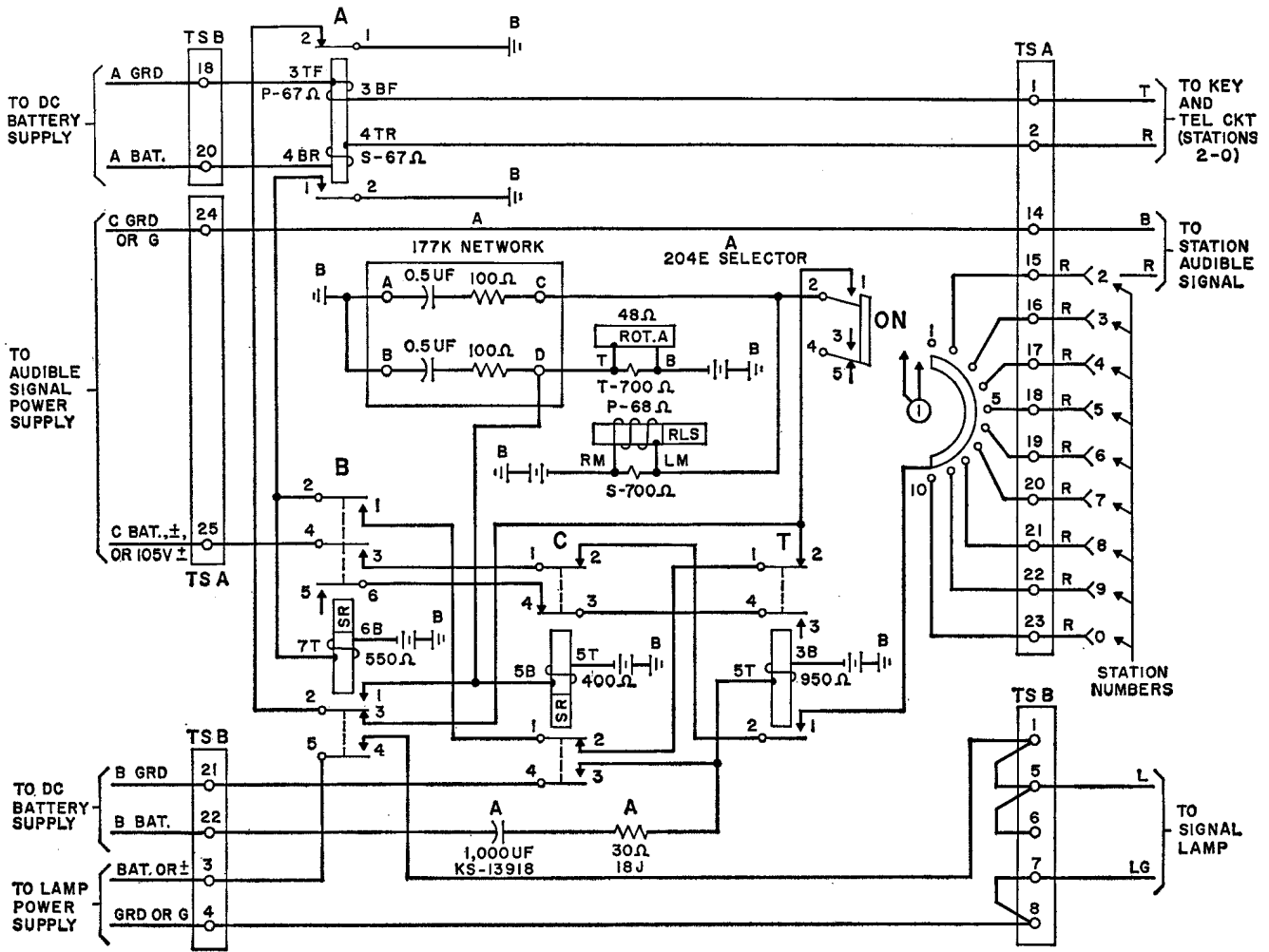


Fig. 5 - 54A KTU



NOTE: SECOND SELECTOR A NOT SHOWN. USED ONLY WHEN FLASHING LINE LAMP IS PROVIDED

Fig. 7-57A KTU