

1A1 KEY TELEPHONE SYSTEM
MANUAL CUTOFF CIRCUIT
USING 29A KEY TELEPHONE UNIT
CONNECTION DATA

1.00 GENERAL

1.01 This section covers connections required at the 29A key telephone unit to provide manual cutoff of 1A1 key telephone system stations.

1.02 The control station can cut off the tip, ring, and A leads to a controlled station at any time by operation of the cutoff key.

2.00 CONNECTIONS

Fig. 1 shows connections to the 29A key telephone unit.

3.00 DESCRIPTION OF OPERATION

Cutoff Key Unoperated

3.01 When a call is answered or originated at the controlled station, the *CT* relay oper-

ates. The operating path of the *CT* relay is battery through its winding, contacts of cutoff key at control station, and switchhook contacts of controlled station to ground.

- Operation of the *CT* relay closes tip, ring, and A leads through to the controlled station.
- The C diode serves to isolate the *CT* relay winding from the A lead toward the line circuit.

Cutoff Key Operated

3.02 Operation of the cutoff key at the control station opens the circuit to the *CT* relay winding. This releases the *CT* relay if operated, or prevents its operation if released and opens tip, ring, and A leads to the controlled station.

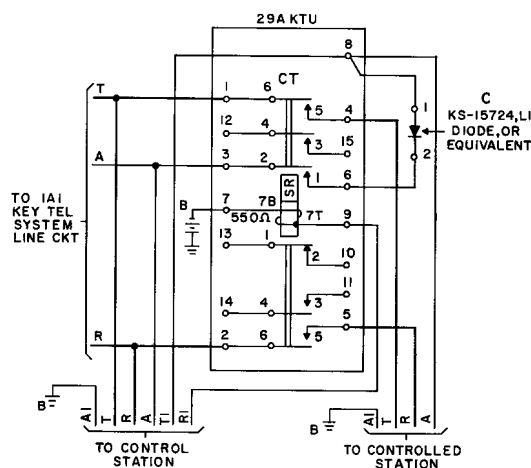


Fig. 1 – Manual Cutoff Circuit