

1A1 KEY TELEPHONE SYSTEM
SIGNAL KEY AND BUZZER CIRCUITS
CONNECTION DATA

1.00 GENERAL

1.01 This section covers connections at the apparatus cabinet for code and/or selective, internal or external, signal key and buzzer circuits.

1.02 Connections at the station for signal key and buzzer circuits are included in the C sections covering the type equipment being used.

1.03 The 549-type keys are 4-button or 8-button nonlocking push-button keys. These keys are designed primarily for use without permanent fastening, the bases being provided with cork and rubber pads so that the keys may be used on furniture. However, screw holes have been provided under the escutcheon plate so that the key can be mounted permanently where this is desirable.

1.04 The 551A key is a single nonlocking push-button key. This key is designed for permanent mounting and is to be connected by wiring brought in through the key.

1.05 The connection information in this section can be applied to the 1A key telephone system.

1.06 Due to extensive changes marginal arrows have been omitted.

2.00 CONNECTIONS

2.01 When key or running cable pairs are used for signal key and buzzer circuits, the conductors are assigned as follows: (See Fig. 1 and 2 for code and/or selective signaling and Fig. 3 for selective signaling.)

- One pair is assigned for each signal key circuit.
 1. One conductor is to be used to supply ground to signal key.
 2. One conductor is to be used to connect signal key, *S* lead, to bridging block.
- One pair is assigned for each buzzer circuit.
 1. One conductor is to be used to supply power to buzzer.
 2. One conductor is to be used to connect buzzer, *B1* lead, to bridging block.
- The *S* lead from the signal keys are to be bridged to the *B1* leads from their associated buzzers at the bridging block.

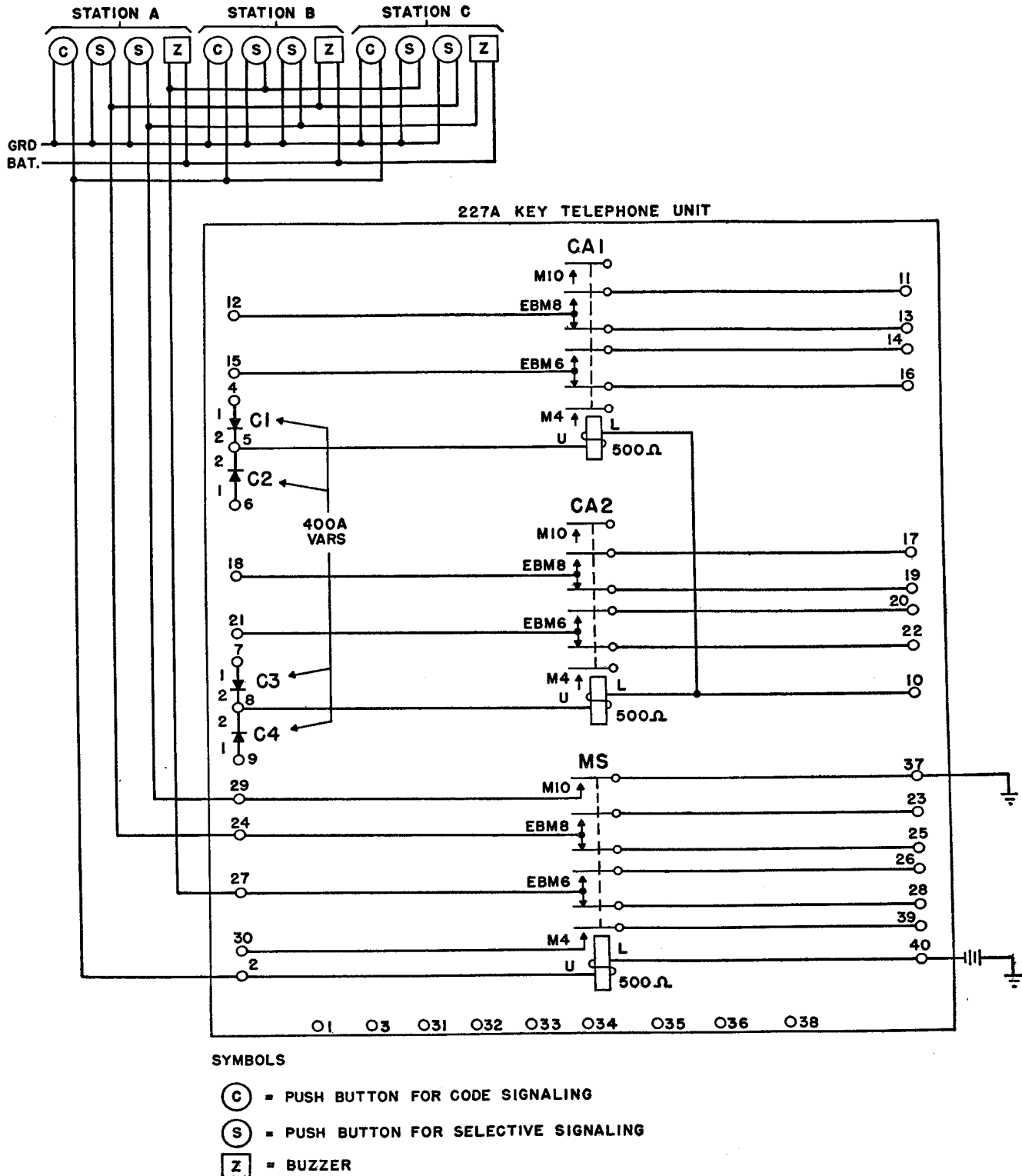
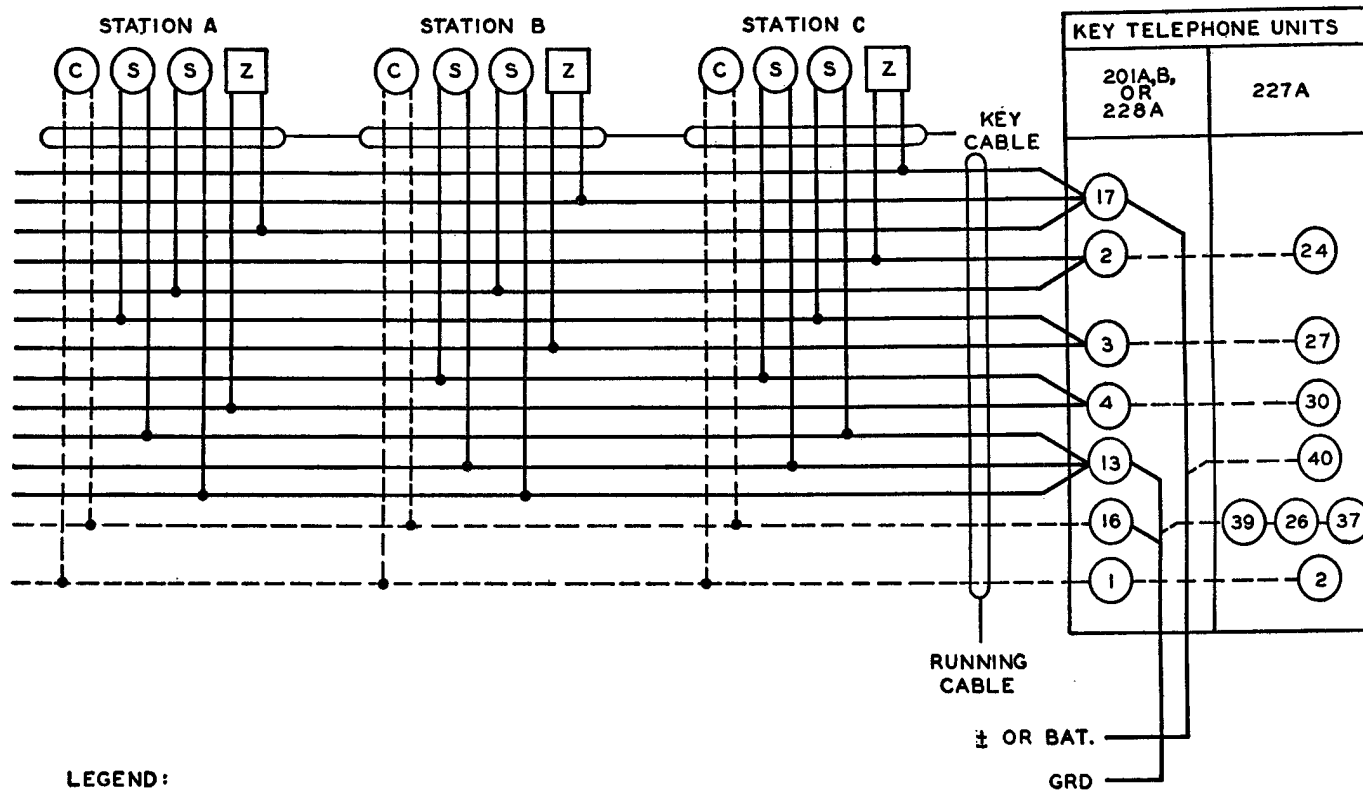


Fig. 1 – Code and Selective Signaling – 227A Key Telephone Unit



LEGEND:

SELECTIVE SIGNALING ONLY - USE SOLID LINES.
 CODE SIGNALING ONLY - STRAP DESIRED BUZZER TERMINALS, 1 THRU 12, ON 201A, B, OR 228A KTU. USE SOLID BUZZER LINES AND DOTTED SIGNAL KEY LINES. 227A KTU NOT USED.

CODE AND SELECTIVE SIGNALING - USE DOTTED (CODE) AND SOLID (SELECTIVE) LINES.

WHOLE PAIRS USED FOR S1 AND GRD LEADS TO SIGNAL KEYS AND ALSO FOR B1 AND R1 LEADS TO BUZZERS.

Fig. 2 - Typical Code and/or Selective Signaling for 1A1 Key Telephone System

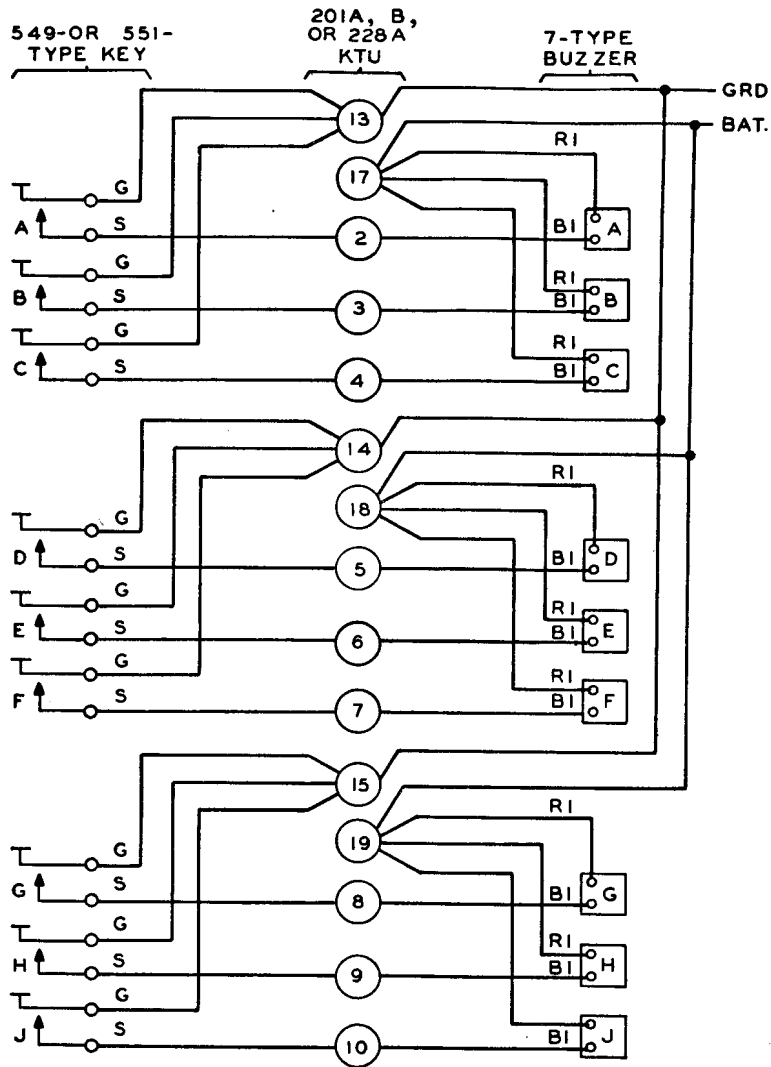


Fig. 3 — Typical 9-Station Selective Buzzer Circuit — Stations A through J