

## 200G-TYPE KEY TELEPHONE UNITS

### 1.00 GENERAL

1.01 This section covers the identification, connections, and maintenance for 200G-type key telephone units. It is reissued to:

- Add information for the new 202D, 230B, and 232B key telephone units.
- Change Table A and the connection drawings to conform with the latest manufacturing specifications.

1.02 The 202C, 230A, and 232A key telephone units are rated Manufacture Discontinued.

As manufacturing facilities permit, key telephone units will be equipped with 202D, 230B, and 232B units, although the package code will not be changed to reflect this fact.

### 2.00 IDENTIFICATION

2.01 The 200G-type key telephone units are packaged units of the 1A1 and 6A selector only key telephone systems. These packages provide for:

- Pickup and hold on four to nine central office or PBX lines, or

- Pickup and hold on four to seven central office or PBX lines with 9-station dial selective intercommunicating circuit.
- Electromechanical interrupter, flashing and winking lamps, interrupted audible signal, manual intercommunicating, and time out.

2.02 The 202G-type key telephone units consist of panel-type key telephone units mounted and factory-wired on a 26A apparatus mounting with or without a 64B1-75 cable terminal (see Fig. 1).

2.03 Fig. 2 shows the arrangement, coding (without cable terminal), and key telephone units used in the 200G-type KTU.

2.04 Additional numbers and letters added to the basic code designate the twenty arrangements of the 200G-type KTU. For example, 200G7DC is a unit as follows:

- 200G — Type
- 7 — Central office or PBX line circuits
- D — 9-station dial selective intercommunicating circuit
- C — 64B1-75 cable terminal

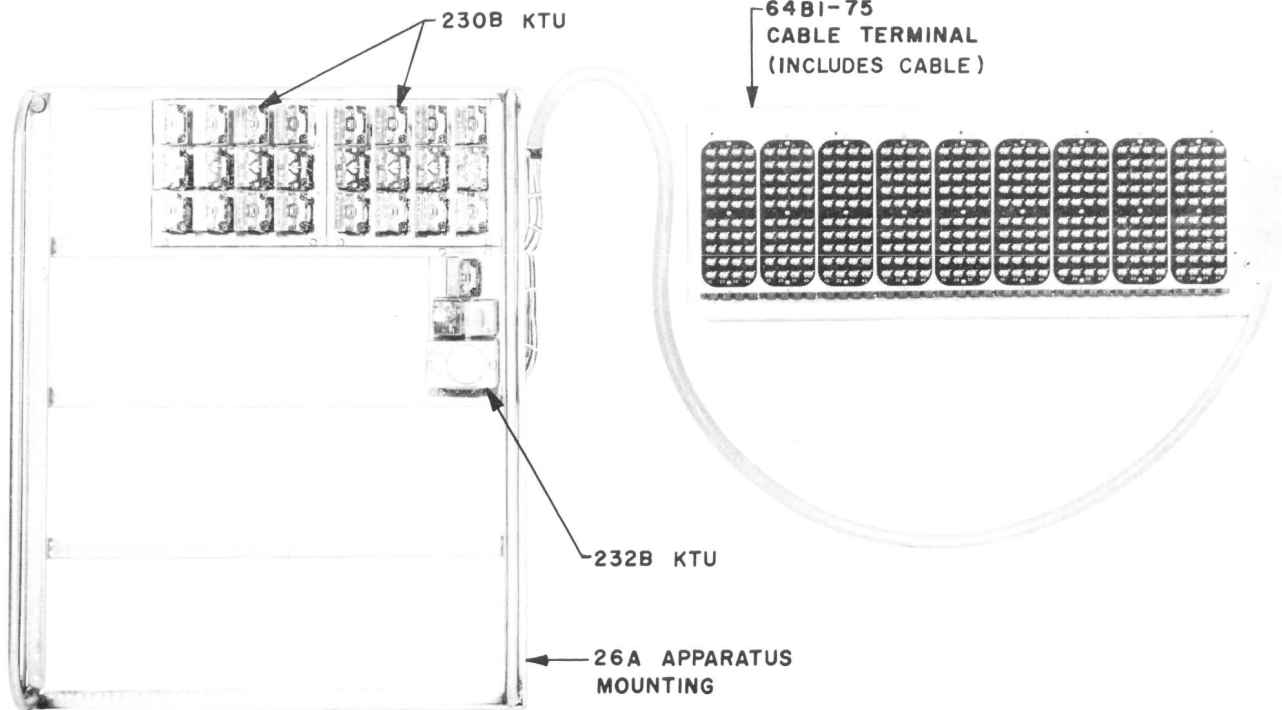


Fig. 1 — 200G8C KTU

**SECTION C71.511.02**

**2.05** The 64B1-75 cable terminal, when ordered as a subcode C, is a 75-pair inside wiring cable terminated at one end on the back of a terminal plate assembly per ED-69366-50, Group 3 and terminated at the other end on the back of the key telephone units. The length of the running cable is 6 feet from cable clamp to cable clamp (see Fig. 1).

➤ **2.06** The 64B1-75 cable terminal equipped with a 15-foot cable tail can be ordered separately.

↳ **2.07** A 232A or B KTU equipped with a KS-15900, List 1 interrupter is furnished with each 200G-type KTU.

**2.08** The 26A apparatus mounting may be installed on the wall, on relay racks, directly on the floor, or in roller slide cabinets. Refer to appropriate C Section for installation.

**2.09** The 200G-type KTU provides mounting space for additional local requirements.

**3.00 CONNECTIONS**

➤ **3.01** When 10 volts ac is used for the station lamp, the KS-15900, List 1 interrupter may also be operated from the same source, depending on the total ac drain imposed on the power plant. Allow approximately 300 ma for the motor load.  
 ↳ This is equivalent to about eight 51A lamps.

**3.02** Table A shows the connections for the running or key cables at either the terminal plate or the key telephone units.

**3.03** Fig. 3 gives an arrangement for manual signaling for five pushbuttons and five buzzers when the dial selective intercommunicating line circuit is not provided.

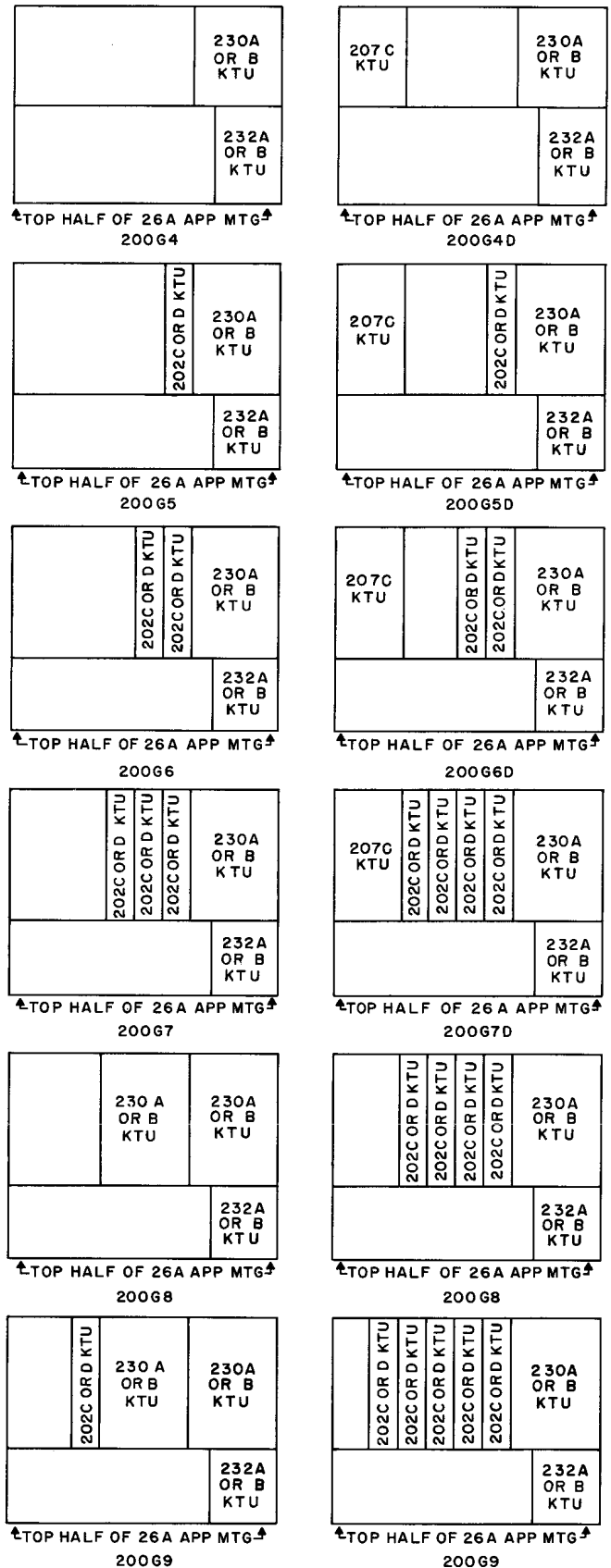
➤ **3.04** Fig. 4 shows strapping between 202C, 230A, 232A, and 207C key telephone units, power connections, and key cable connections.

↳ **3.05** Fig. 5 shows strapping between 202D, 230B, 232B, and 207C key telephone units, power connections, and key cable connections.

**4.00 MAINTENANCE**

➤ **4.01** Circuit drawings (Fig. 6A, 6B, and 6C) are included as aids for making connections and clearing troubles.

↳ **4.02** For additional maintenance information, refer to the C Section covering the KTU involved.



**Fig. 2 - Block Diagram**

TABLE A

200G-TYPE KTU — CONNECTIONS

| Feature              | Lead Designation | 64B1-75 Cable Terminal |                     | Terminal* on KTU |      | Terminal† on KTU |      | Terminal‡ on KTU |      | Terminal on 207C KTU |
|----------------------|------------------|------------------------|---------------------|------------------|------|------------------|------|------------------|------|----------------------|
|                      |                  | Terminal Strip A       | Inside Wiring Cable | 232A             | 232B | 230A             | 230B | 202C             | 202D |                      |
|                      |                  |                        |                     |                  |      |                  |      |                  |      |                      |
| Line 1               | T                | 1                      | W                   |                  |      | 1A-11A           |      |                  |      |                      |
|                      | R                | 2                      | BL                  |                  |      | 2A-12A           |      |                  |      |                      |
|                      | A                | 3                      | W                   |                  |      | 3A-13A           |      |                  |      |                      |
| Line 2               | A1               | 4                      | O                   |                  |      | 4A-14A           |      |                  |      |                      |
|                      | LG               | 5                      | W                   |                  |      | 6A-16A           |      |                  |      |                      |
|                      | L                | 6                      | G                   |                  |      | 5A-15A           |      |                  |      |                      |
| Line 3               | T                | 7                      | W                   |                  |      | 1B-11B           |      |                  |      |                      |
|                      | R                | 8                      | BR                  |                  |      | 2B-12B           |      |                  |      |                      |
|                      | A                | 9                      | W                   |                  |      | 3B-13B           |      |                  |      |                      |
| Line 4               | A1               | 10                     | S                   |                  |      | 4B-14B           |      |                  |      |                      |
|                      | LG               | 11                     | R                   |                  |      | 6B-16B           |      |                  |      |                      |
|                      | L                | 12                     | BL                  |                  |      | 5B-15B           |      |                  |      |                      |
| Line 5               | T                | 13                     | R                   |                  |      | 1C-11C           |      |                  |      |                      |
|                      | R                | 14                     | O                   |                  |      | 2C-12C           |      |                  |      |                      |
|                      | A                | 15                     | R                   |                  |      | 3C-13C           |      |                  |      |                      |
| Line 6               | A1               | 16                     | G                   |                  |      | 4C-14C           |      |                  |      |                      |
|                      | LG               | 17                     | R                   |                  |      | 6C-16C           |      |                  |      |                      |
|                      | L                | 18                     | BR                  |                  |      | 5C-15C           |      |                  |      |                      |
| Line 7               | T                | 19                     | R                   |                  |      | 1D-11D           |      |                  |      |                      |
|                      | R                | 20                     | S                   |                  |      | 2D-12D           |      |                  |      |                      |
|                      | A                | 21                     | BK                  |                  |      | 3D-13D           |      |                  |      |                      |
| Line 8               | A1               | 22                     | BL                  |                  |      | 4D-14D           |      |                  |      |                      |
|                      | LG               | 23                     | BK                  |                  |      | 6D-16D           |      |                  |      |                      |
|                      | L                | 24                     | O                   |                  |      | 5D-15D           |      |                  |      |                      |
| Line 9               | T                | 25                     | BK                  |                  |      | 1A-11A           |      | 1-11             |      |                      |
|                      | R                | 26                     | G                   |                  |      | 2A-12A           |      | 2-12             |      |                      |
|                      | A                | 27                     | BK                  |                  |      | 3A-13A           |      | 3-13             |      |                      |
| Line 10              | A1               | 28                     | BR                  |                  |      | 4A-14A           |      | 4-14             |      |                      |
|                      | LG               | 29                     | BK                  |                  |      | 6A-16A           |      | 6-16             |      |                      |
|                      | L                | 30                     | S                   |                  |      | 5A-15A           |      | 5-15             |      |                      |
| Line 11              | T                | 31                     | Y                   |                  |      | 1B-11B           |      | 1-11             |      |                      |
|                      | R                | 32                     | BL                  |                  |      | 2B-12B           |      | 2-12             |      |                      |
|                      | A                | 33                     | Y                   |                  |      | 3B-13B           |      | 3-13             |      |                      |
| Line 12              | A1               | 34                     | O                   |                  |      | 4B-14B           |      | 4-14             |      |                      |
|                      | LG               | 35                     | Y                   |                  |      | 6B-16B           |      | 6-16             |      |                      |
|                      | L                | 36                     | G                   |                  |      | 5B-15B           |      | 5-15             |      |                      |
| Manual Intercom Line | T                | 37                     | Y                   |                  | 30   |                  |      |                  |      |                      |
|                      | R                | 38                     | BR                  |                  | 40   |                  |      |                  |      |                      |
|                      | LG               | 39§                    | Y                   |                  |      |                  |      |                  |      |                      |
|                      | L                | 40                     | S                   |                  | 28   |                  |      |                  |      |                      |

\* 232B KTU is arranged internally to disable timeout feature when BF relay is operated. See Fig. 6B.  
 † 230B KTU is arranged for individual fusing of circuits 1 and 2 and circuits 3 and 4 lamp input power. See Fig. 6B.  
 ‡ If second 230A or B KTU is not used for lines 5 through 8, terminate leads on 202C or D key telephone units as shown.  
 § Strap to terminal strip A, punching 5.

TABLE A (Cont)

200G-TYPE KTU – CONNECTIONS

| Feature                      | Lead Designation | 64B1-75 Cable Terminal |                     |               | Terminal on KTU |      | Terminal on KTU |      | Terminal‡ on KTU |      | Terminal on 207C KTU |            |
|------------------------------|------------------|------------------------|---------------------|---------------|-----------------|------|-----------------|------|------------------|------|----------------------|------------|
|                              |                  | Terminal Strip B       | Inside Wiring Cable |               | 232A            | 232B | 230A            | 230B | 202C             | 202D |                      |            |
|                              |                  |                        |                     |               |                 |      |                 |      |                  |      |                      |            |
| Line 7                       | T                | 1                      | V                   | Blue Binder   |                 |      | 1C-11C          |      | 1-11             | 3rd  |                      |            |
|                              | R                | 2                      | BL                  |               |                 |      | 2C-12C          |      | 2-12             |      |                      |            |
|                              | A                | 3                      | V                   |               |                 |      | 3C-13C          |      | 3-13             |      |                      |            |
| Line 8                       | A1               | 4                      | O                   |               |                 |      | 4C-14C          |      | 4-14             | 4th  |                      |            |
|                              | LG               | 5                      | V                   |               |                 |      | 6C-16C          | 2nd‡ | 6-16             |      |                      |            |
|                              | L                | 6                      | G                   |               |                 |      | 5C-15C          |      | 5-15             |      |                      |            |
| Line 9                       | T                | 7                      | V                   |               |                 |      | 1D-11D          |      | 1-11             | 5th  |                      |            |
|                              | R                | 8                      | BR                  |               |                 |      | 2D-12D          |      | 2-12             |      |                      |            |
|                              | A                | 9                      | V                   |               |                 |      | 3D-13D          |      | 3-13             |      |                      |            |
| Dial Selective Intercom Line | A1               | 10                     | S                   |               |                 |      | 4D-14D          |      | 4-14             |      |                      |            |
|                              | LG               | 11                     | W                   |               |                 |      | 6D-16D          |      | 6-16             |      |                      |            |
|                              | L                | 12                     | BL                  |               |                 |      | 5D-15D          |      | 5-15             |      |                      |            |
| Dial Selective Intercom Line | T                | 13                     | W                   | Orange Binder |                 |      |                 |      |                  |      | 1B-11B-21B           |            |
|                              | R                | 14                     | O                   |               |                 |      |                 |      |                  |      |                      | 2B-12B-22B |
|                              | A                | 15                     | W                   |               |                 |      |                 |      | 3-13             |      |                      |            |
|                              | A1               | 16                     | G                   |               |                 |      |                 |      | 4-14             |      |                      |            |
|                              | LG               | 17                     | W                   |               |                 |      |                 |      | 6-16             |      |                      |            |
|                              | L                | 18                     | BR                  |               |                 |      |                 |      | 5-15             |      |                      |            |
|                              | T                | 19                     | W                   |               |                 |      |                 |      |                  |      |                      |            |
|                              | R                | 20                     | S                   |               |                 |      |                 |      |                  |      |                      |            |
|                              | LG               | 21                     | R                   |               |                 |      |                 |      |                  |      |                      |            |
|                              | L                | 22                     | BL                  |               |                 |      |                 |      |                  |      |                      |            |
|                              | B (2)            | 23                     | R                   |               |                 |      |                 |      |                  |      |                      |            |
|                              | R (2)            | 24                     | O                   |               |                 |      |                 |      |                  |      |                      |            |
| B (3)                        | 25               | R                      |                     |               |                 |      |                 |      |                  |      |                      |            |
| R (3)                        | 26               | G                      |                     |               |                 |      |                 |      |                  |      |                      |            |
| B (4)                        | 27               | R                      |                     |               |                 |      |                 |      |                  |      |                      |            |
| R (4)                        | 28               | BR                     |                     |               |                 |      |                 |      |                  |      |                      |            |
| B (5)                        | 29               | R                      |                     |               |                 |      |                 |      |                  |      |                      |            |
| R (5)                        | 30               | S                      |                     |               |                 |      |                 |      |                  |      |                      |            |
| B (6)                        | 31               | BK                     |                     |               |                 |      |                 |      |                  |      |                      |            |
| R (6)                        | 32               | BL                     |                     |               |                 |      |                 |      |                  |      |                      |            |
| B (7)                        | 33               | BK                     |                     |               |                 |      |                 |      |                  |      |                      |            |
| R (7)                        | 34               | O                      |                     |               |                 |      |                 |      |                  |      |                      |            |
| B (8)                        | 35               | BK                     |                     |               |                 |      |                 |      |                  |      |                      |            |
| R (8)                        | 36               | G                      |                     |               |                 |      |                 |      |                  |      |                      |            |
| B (9)                        | 37               | BK                     |                     |               |                 |      |                 |      |                  |      |                      |            |
| R (9)                        | 38               | BR                     |                     |               |                 |      |                 |      |                  |      |                      |            |
| B (0)                        | 39               | BK                     |                     |               |                 |      |                 |      |                  |      |                      |            |
| R (0)                        | 40               | S                      |                     |               |                 |      |                 |      |                  |      |                      |            |

→ ‡ If second 230A or B KTU is not used for lines 5 through 8, terminate leads on 202C or D key telephone units as shown.

TABLE A (Cont)

200G-TYPE KTU – CONNECTIONS

| Feature   | Lead Designation | 64B1-75 Cable Terminal |                     | Terminal on KTU |      | Terminal on KTU |            | Terminal‡ on KTU |          | Terminal on 207C KTU |     |
|-----------|------------------|------------------------|---------------------|-----------------|------|-----------------|------------|------------------|----------|----------------------|-----|
|           |                  | Terminal Strip C       | Inside Wiring Cable | 232A            | 232B | 230A            | 230B       | 202C             | 202D     |                      |     |
|           |                  |                        |                     |                 |      |                 |            |                  |          |                      |     |
| Aud Sig   | Line 1           | B1 or BZ1<br>R1 or BZ  | 1<br>2              | Y<br>BL         |      |                 | 25A<br>10A |                  |          |                      |     |
|           | Line 2           | B1 or BZ1<br>R1 or BZ  | 3<br>4              | Y<br>O          |      |                 | 25A<br>10B |                  |          |                      |     |
|           | Line 3           | B1 or BZ1<br>R1 or BZ  | 5<br>6              | Y<br>G          |      |                 | 28A<br>10C | 30A<br>10C       |          |                      |     |
|           | Line 4           | B1 or BZ1<br>R1 or BZ  | 7<br>8              | Y<br>BR         |      |                 | 28A<br>10D | 30A<br>10D       |          |                      |     |
|           | Line 5           | B1 or BZ1<br>R1 or BZ  | 9<br>10             | Y<br>S          |      |                 | 25A<br>10A |                  | 25<br>10 | 1st                  |     |
|           | Line 6           | B1 or BZ1<br>R1 or BZ  | 11<br>12            | V<br>BL         |      |                 | 25A<br>10B | 30A<br>10B       | 25<br>10 | 30<br>10             | 2nd |
|           | Line 7           | B1 or BZ1<br>R1 or BZ  | 13<br>14            | V<br>O          |      |                 | 28A<br>10C | 25A<br>10C       | 25<br>10 |                      | 3rd |
|           | Line 8           | B1 or BZ1<br>R1 or BZ  | 15<br>16            | V<br>G          |      |                 | 28A<br>10D | 30A<br>10D       | 25<br>10 | 30<br>10             | 4th |
|           | Line 9           | B1 or BZ1<br>R1 or BZ  | 17<br>18            | V<br>BR         |      |                 |            |                  | 25<br>10 |                      | 5th |
| CO or PBX | Line 1           | T<br>R                 | 19<br>20            | V<br>S          |      |                 | 7A<br>8A   |                  |          |                      |     |
|           | Line 2           | T<br>R                 | 21<br>22            | W<br>BL         |      |                 | 7B<br>8B   |                  |          |                      |     |
|           | Line 3           | T<br>R                 | 23<br>24            | W<br>O          |      |                 | 7C<br>8C   |                  |          |                      |     |
|           | Line 4           | T<br>R                 | 25<br>26            | W<br>G          |      |                 | 7D<br>8D   |                  |          |                      |     |
|           | Line 5           | T<br>R                 | 27<br>28            | W<br>BR         |      |                 | 7A<br>8A   |                  | 7<br>8   |                      | 1st |
|           | Line 6           | T<br>R                 | 29<br>30            | W<br>S          |      |                 | 7B<br>8B   |                  | 7<br>8   |                      | 2nd |
|           | Line 7           | T<br>R                 | 31<br>32            | R<br>BL         |      |                 | 7C<br>8C   |                  | 7<br>8   |                      | 3rd |
|           | Line 8           | T<br>R                 | 33<br>34            | R<br>O          |      |                 | 7D<br>8D   |                  | 7<br>8   |                      | 4th |
|           | Line 9           | T<br>R                 | 35<br>36            | R<br>G          |      |                 |            |                  | 7<br>8   |                      | 5th |
| Spare     |                  |                        | 37<br>38            | R<br>BR         |      |                 |            |                  |          |                      |     |
|           |                  |                        | 39<br>40            | R<br>S          |      |                 |            |                  |          |                      |     |

‡ If second 230A or B KTU is not used for lines 5 through 8, terminate leads on 202C or D key telephone units as shown.

TABLE A (Cont)  
200G-TYPE KTU — CONNECTIONS

| Feature  | Lead Designation                                 | 64B1-75 Cable Terminal |                     | Terminal on KTU |      | Terminal on KTU |      | Terminal‡ on KTU |      |   | Terminal on 207C KTU |            |
|--|--|------------------------|---------------------|-----------------|------|-----------------|------|------------------|------|---|----------------------|------------|
|  |  | Terminal Strip E       | Inside Wiring Cable | 232A            | 232B | 230A            | 230B | 202C             | 202D |   |                      |            |
| 20V DC Talk (A Bat.)                             | GRD<br>BAT.                                      | 1                      | BK                  | 25              | 24   |                 |      |                  |      |   |                      |            |
|  |  | 2                      | BL                  |                 |      |                 |      |                  |      |   |                      |            |
| 20V DC Sig (B Bat.)                              | GRD<br>BAT.                                      | 3                      | BK                  | 39              |      | 27A             | 14A  |                  |      |   |                      |            |
|  |  | 4                      | O                   |                 |      | 26A             |      |                  |      |   |                      |            |
| Motor Supply                                     | GRD<br>10V ±                                     | 5                      | BK                  | 27              | 26   |                 |      |                  |      |   |                      |            |
|  |  | 6                      | G                   |                 |      |                 |      |                  |      |   |                      |            |
| Aud Sig Supply                                   | GRD<br>BAT., ±, or 105V ±                        | 7                      | BK                  | 29              |      | 25A             |      |                  |      |   |                      |            |
|  |  | 8                      | BR                  |                 |      |                 |      |                  |      |   |                      |            |
| Lamp Supply 1st 4 Lines                          | GRD<br>± or BAT.                                 | 9                      | BK                  |                 |      | 30A             | 16A  |                  |      |   |                      |            |
|  |  | 10                     | S                   |                 |      |                 |      |                  |      |   |                      | 29A        |
| Lamp Supply 2nd 4 Lines                          | GRD<br>± or BAT.                                 | 11                     | Y                   |                 |      | 30A             | 16A  | 2nd‡             | 30   | 6 | 1st                  |            |
|  |  | 12                     | BL                  |                 |      |                 |      |                  |      |   |                      |            |
| Lamp Supply 9th Line and Dial Selective Intercom | GRD<br>± or BAT.                                 | 13                     | Y                   |                 |      |                 |      |                  | 30   | 6 | 5th                  | 32B<br>29B |
|  |  | 14                     | O                   |                 |      |                 |      |                  |      |   |                      |            |
| Lamp Supply                                      | ± or BAT.<br>± or BAT.<br>± or BAT.<br>± or BAT. | 15                     | Y                   | 9               | 10   |                 |      |                  |      |   |                      |            |
|  |  | 16                     | G                   |                 |      |                 |      |                  |      |   |                      |            |
|  |  | 17                     | Y                   |                 |      |                 |      |                  |      |   |                      |            |
|  |  | 18                     | BR                  |                 |      |                 |      |                  |      |   |                      |            |
| Spare  |  | 19                     | Y                   |                 |      |                 |      |                  |      |   |                      |            |
|  |  | 20                     | S                   |                 |      |                 |      |                  |      |   |                      |            |
|  |  | 21                     | V                   |                 |      |                 |      |                  |      |   |                      |            |
|  |  | 22                     | BL                  |                 |      |                 |      |                  |      |   |                      |            |
|  |  | 23                     | V                   |                 |      |                 |      |                  |      |   |                      |            |
|  |  | 24                     | O                   |                 |      |                 |      |                  |      |   |                      |            |
|  |  | 25                     | V                   |                 |      |                 |      |                  |      |   |                      |            |
|  |  | 26                     | G                   |                 |      |                 |      |                  |      |   |                      |            |
| 27   | V  |                        |                     |                 |      |                 |      |                  |      |   |                      |            |
| 28   | BR   |                        |                     |                 |      |                 |      |                  |      |   |                      |            |
| Vacant   |  | 29                     | V                   |                 |      |                 |      |                  |      |   |                      |            |
|  |  | 30                     | S                   |                 |      |                 |      |                  |      |   |                      |            |
| Vacant   |  | 31                     |                     |                 |      |                 |      |                  |      |   |                      |            |
|  |  | 32                     |                     |                 |      |                 |      |                  |      |   |                      |            |
|  |  | 33                     |                     |                 |      |                 |      |                  |      |   |                      |            |
|  |  | 34                     |                     |                 |      |                 |      |                  |      |   |                      |            |
|  |  | 35                     |                     |                 |      |                 |      |                  |      |   |                      |            |
|  |  | 36                     |                     |                 |      |                 |      |                  |      |   |                      |            |
|  |  | 37                     |                     |                 |      |                 |      |                  |      |   |                      |            |
|  |  | 38                     |                     |                 |      |                 |      |                  |      |   |                      |            |
| 39   |  |                        |                     |                 |      |                 |      |                  |      |   |                      |            |
| 40   |  |                        |                     |                 |      |                 |      |                  |      |   |                      |            |

Green Binder

‡ If second 230A or B KTU is not used for lines 5 through 8, terminate leads on 202C or D key telephone units as shown.

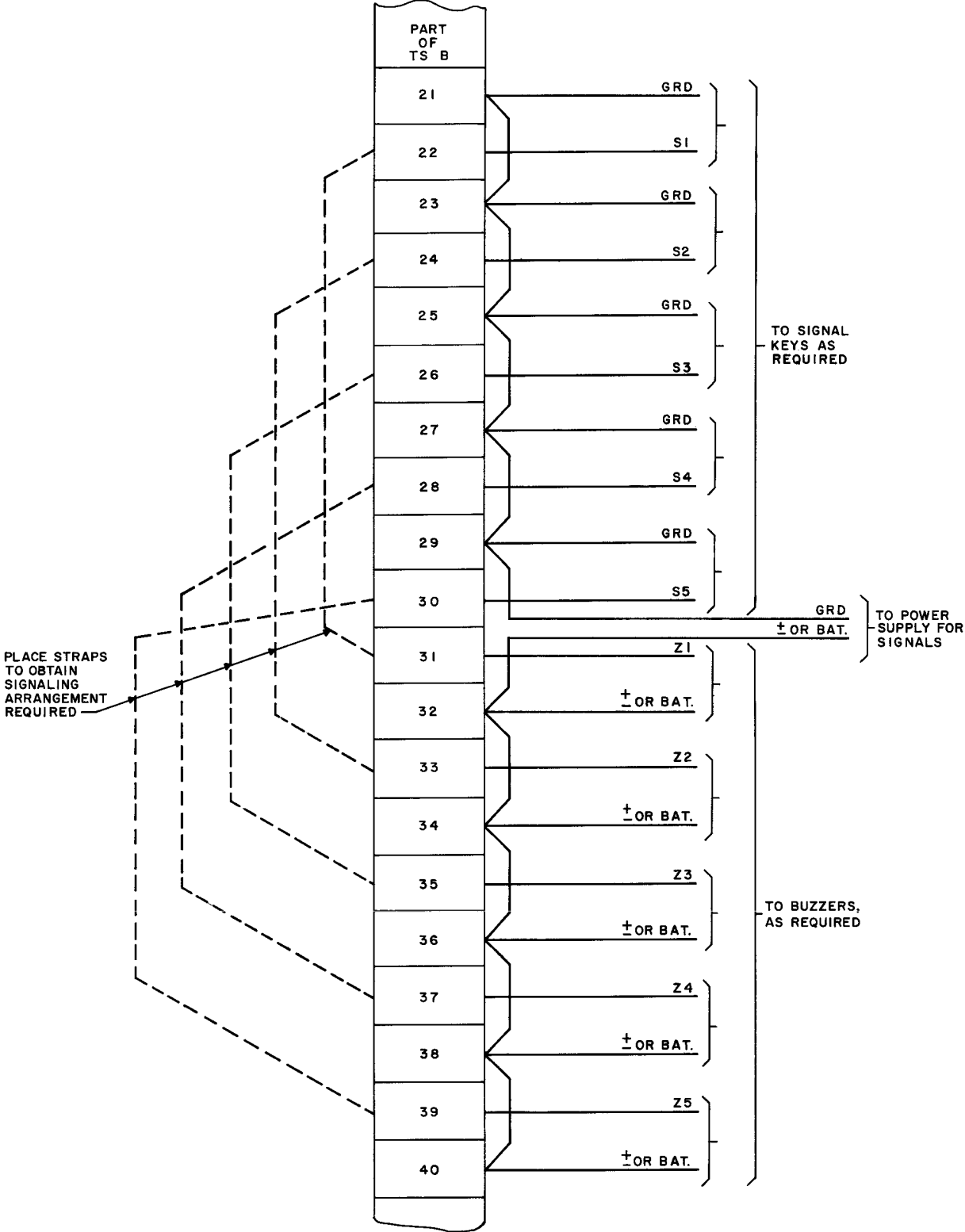


Fig. 3 – Connections for Manual Signaling When Dial Selective Intercommunicating Circuit Is Not Used

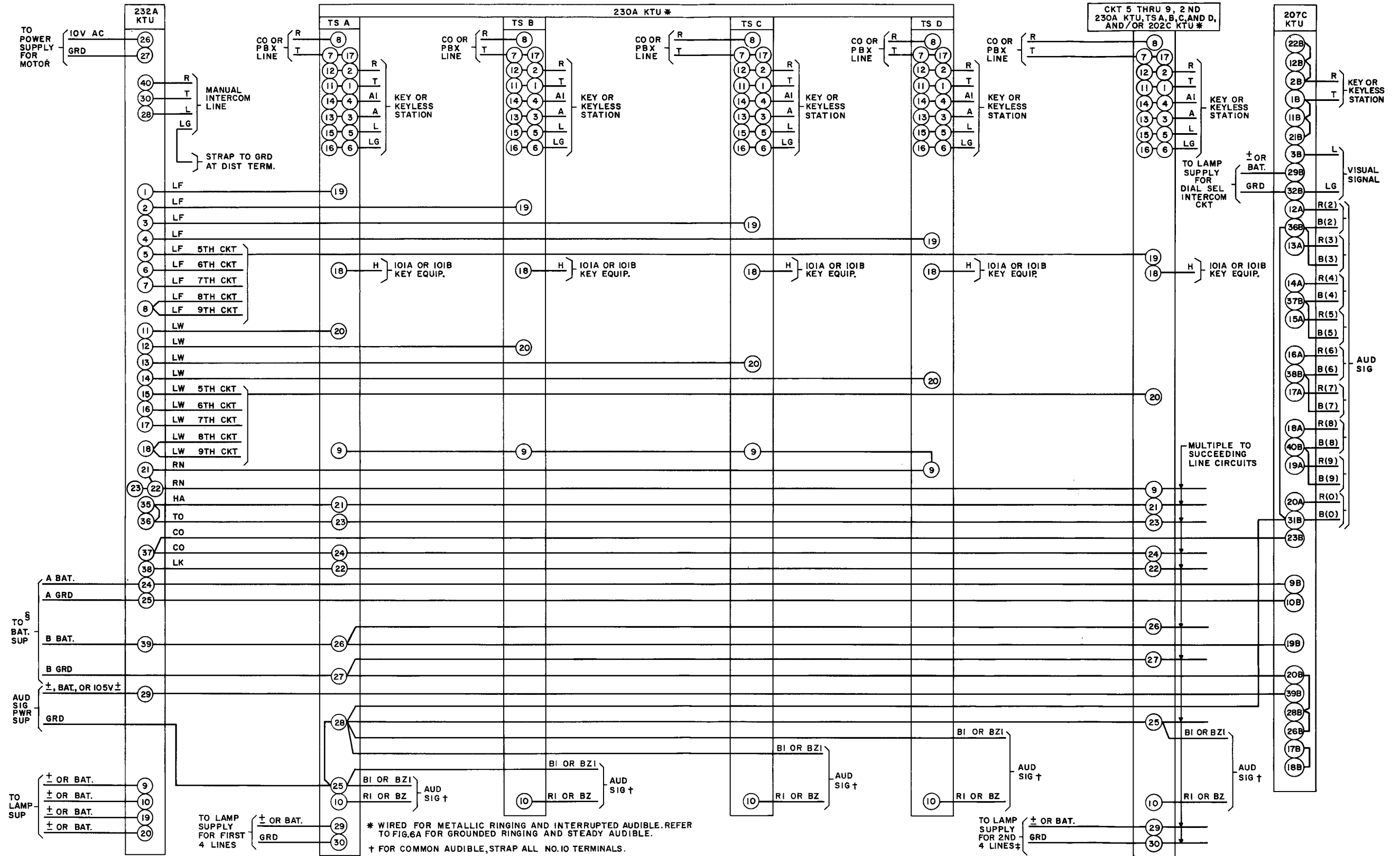


Fig. 4 - 200G-Type KTU (202C, 230A, 232A, and 207C) - Connections and Strappings



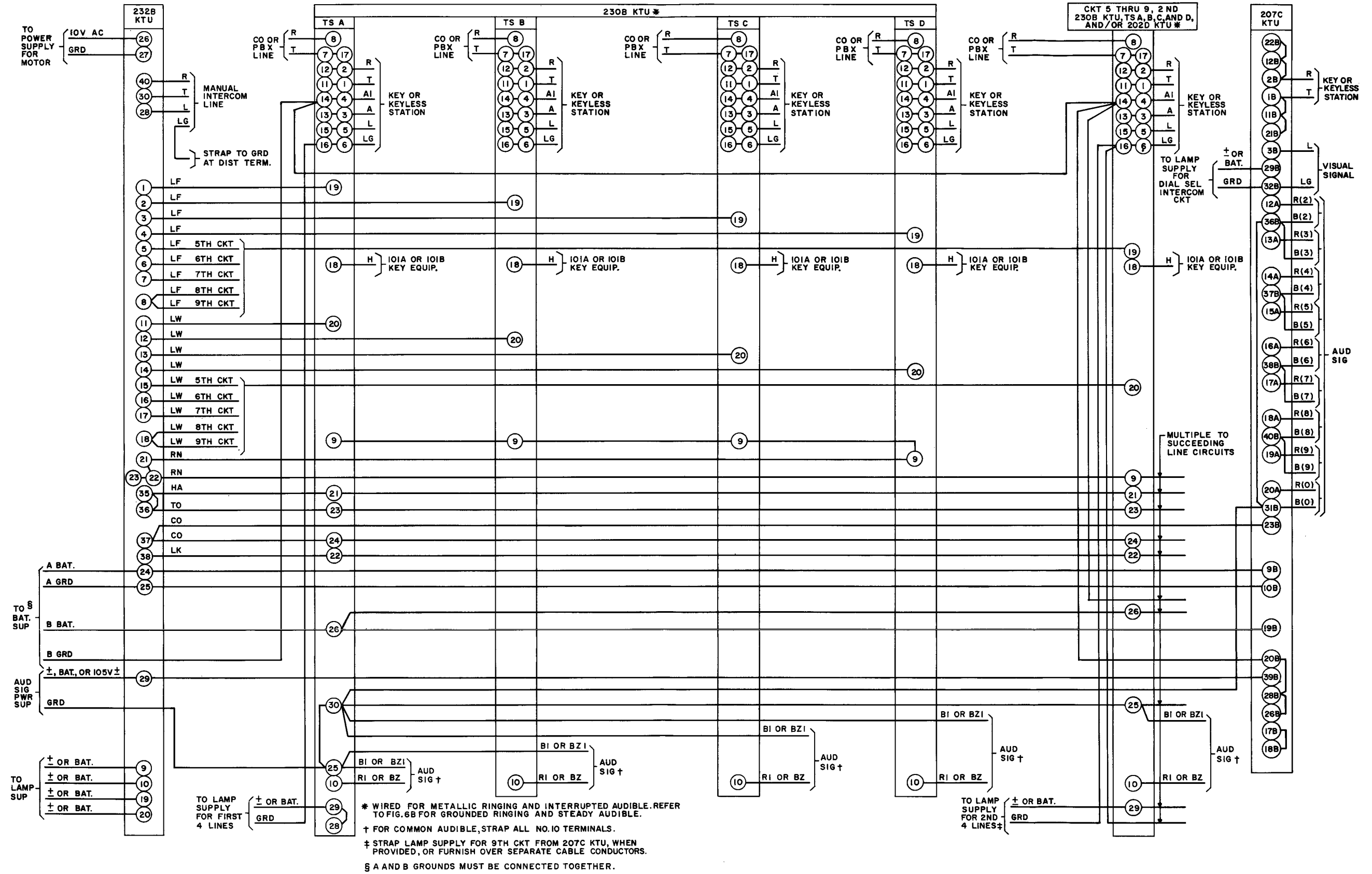


Fig. 5 - 200G-Type KTU (202D, 230B, 232B, and 207C) - Connections and Strappings

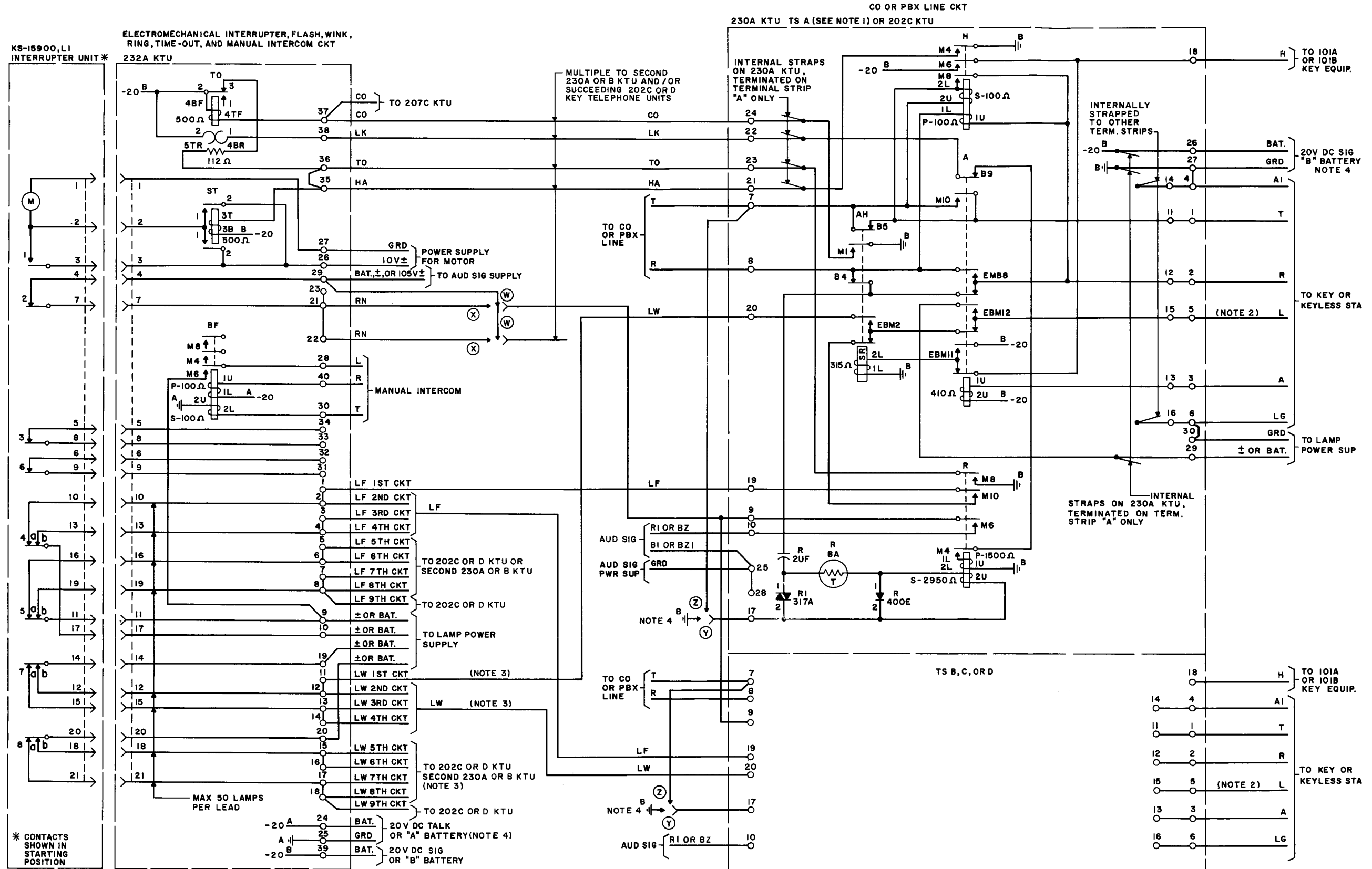


Fig. 6A - 200G-Type KTU (202C, 230A, and 232A) ←  
 - Schematic Drawing  
 (For Wiring Options and Circuit Notes, See Fig. 6C)

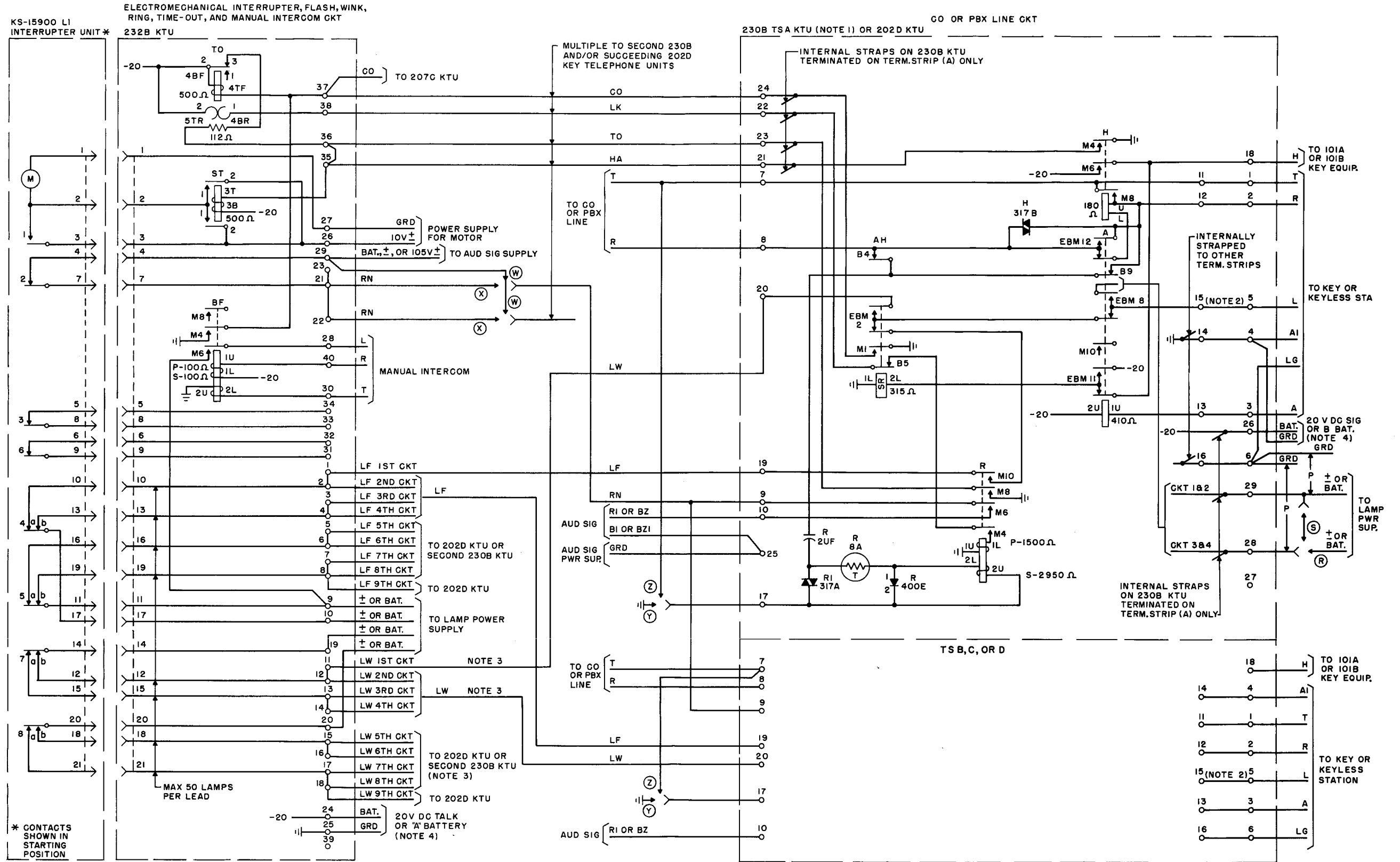
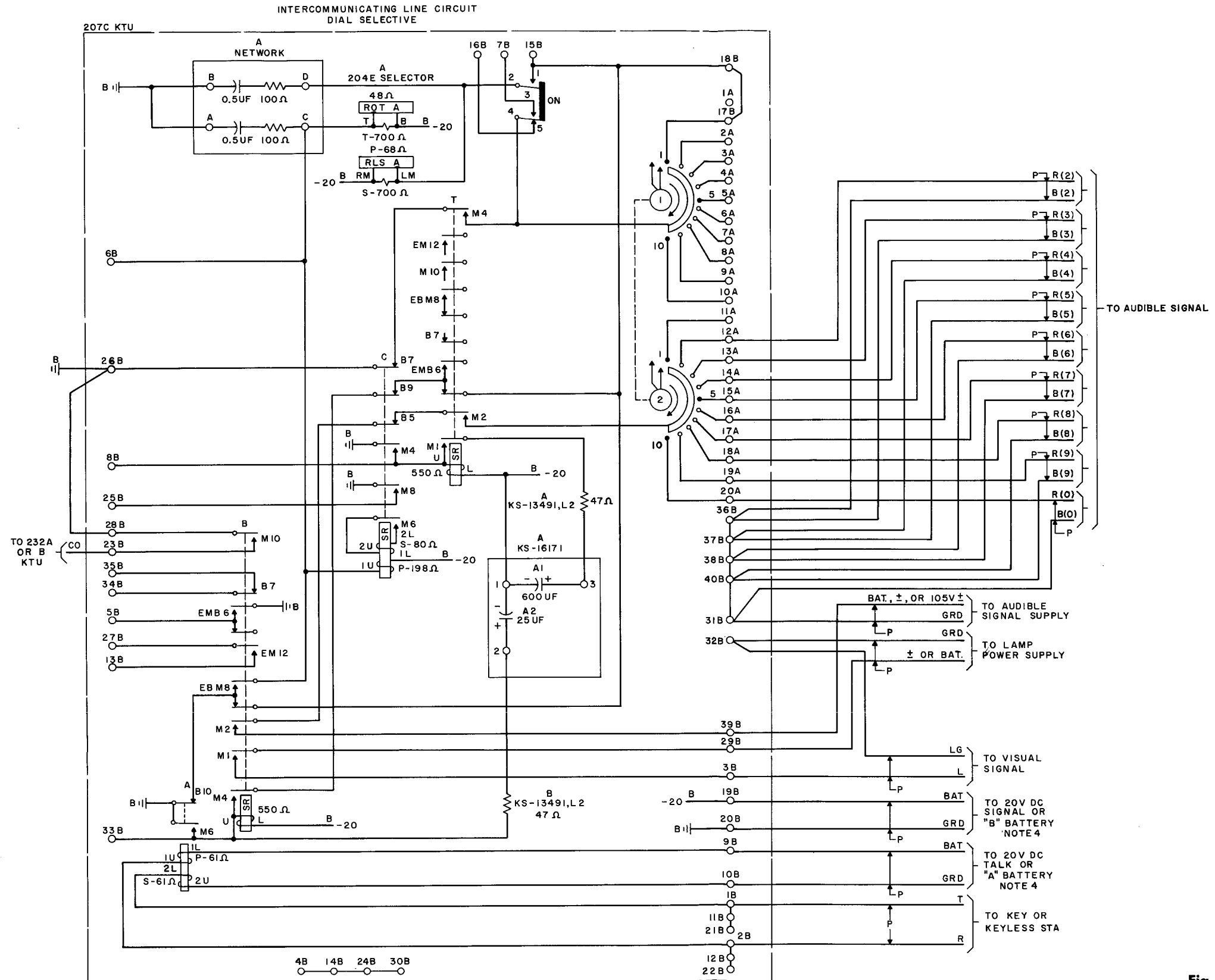


Fig. 6B — 200G-Type KTU (202D, 230B, and 232B) — Schematic Drawing  
 (For Wiring Options and Circuit Notes, See Fig. 6C)



| WIRING FOR CO OR PBX LINES          |                          | OPTION |
|-------------------------------------|--------------------------|--------|
| METALLIC RINGING (FURNISHED)        |                          | Z      |
| GROUNDING RINGING                   |                          | Y      |
| INTERRUPTED AUDIBLE SIG (FURNISHED) |                          | X      |
| STEADY AUDIBLE SIGNAL               |                          | W      |
| LAMP MAX                            | MAX 40 LAMPS (FURNISHED) | S      |
|                                     | MAX 80 LAMPS             | R      |

FACTORY STRAPPING OF TERMINAL STRIPS  
FOR THE 230A KEY TEL UNIT

DOTTED LINE - INTERNAL STRAPPING  
SOLID LINE - SURFACE STRAPPING

| TS A |    | TS B |    | TS C |    | TS D |    |
|------|----|------|----|------|----|------|----|
| 1    | 11 | 1    | 11 | 1    | 11 | 1    | 11 |
| 2    | 12 | 2    | 12 | 2    | 12 | 2    | 12 |
| 3    | 13 | 3    | 13 | 3    | 13 | 3    | 13 |
| 4    | 14 | 4    | 14 | 4    | 14 | 4    | 14 |
| 5    | 15 | 5    | 15 | 5    | 15 | 5    | 15 |
| 6    | 16 | 6    | 16 | 6    | 16 | 6    | 16 |
| 7    | 17 | 7    | 17 | 7    | 17 | 7    | 17 |
| 8    | 18 | 8    | 18 | 8    | 18 | 8    | 18 |
| 9    | 19 | 9    | 19 | 9    | 19 | 9    | 19 |
| 10   | 20 | 10   | 20 | 10   | 20 | 10   | 20 |
| 11   | 21 | 11   | 21 | 11   | 21 | 11   | 21 |
| 12   | 22 | 12   | 22 | 12   | 22 | 12   | 22 |
| 13   | 23 | 13   | 23 | 13   | 23 | 13   | 23 |
| 14   | 24 | 14   | 24 | 14   | 24 | 14   | 24 |
| 15   | 25 | 15   | 25 | 15   | 25 | 15   | 25 |

NOTE 1: FOR THE 230A OR B KTU, THE FOLLOWING APPLIES FOR PUNCHINGS 1 THROUGH 20:  
 LINE 1 TERMINATES ON TERMINAL STRIP A  
 LINE 2 TERMINATES ON TERMINAL STRIP B  
 LINE 3 TERMINATES ON TERMINAL STRIP C  
 LINE 4 TERMINATES ON TERMINAL STRIP D  
 BATTERY AND GROUND TERMINATED ON TERMINAL STRIP A AND STRAPPED INTERNALLY.

NOTE 2: MAXIMUM 20 LAMPS PER L LEAD.

NOTE 3: WHEN STEADY HOLD LAMP IS REQUIRED INSTEAD OF LAMP WINK, PROVIDE STRAPS AS FOLLOWS:  
 202C & 202D KTU - TERM. 20 AND 29.  
 230A KTU - TERM. 20A, B, C, D, AND 29A.  
 230B KTU - TERM. 20A, B, AND 29A  
 TERM. 20C, D, AND 28A

CAUTION: IF PACKAGE INTERRUPTER IS USED TO FURNISH LAMP WINK FOR OTHER SYSTEMS, DISCONNECT AND TAPE LW LEADS AT TERMINAL 20 OF EACH LINE CIRCUIT NOT USING THE WINK FEATURE.

NOTE 4: A AND B GROUNDS MUST BE CONNECTED TOGETHER AT POWER SUPPLY.

Fig. 6C - 200G-Type KTU (207C) - Schematic Drawing