

KEY SERVICE UNITS
 300, 301, AND 302 TYPES
 CONNECTIONS AND MAINTENANCE

1.00 GENERAL

1.01 This section covers connections and maintenance for the 300-, 301-, and 302-type key service units.

1.02 General information for these units is as follows:

- 300-Type Key Service Units - Apparatus interwired only; key or running cables connect directly to apparatus.
- 301-Type Key Service Units -
 - (a) Apparatus wired to two 66B1-25 connecting blocks (quick connect terminals).
 - (b) Connecting blocks furnished with aluminum pressure-sensitive tapes, preprinted with lead designations.
- 302-Type Key Service Units -
 - (a) Apparatus wired to two 66B1-25 connecting blocks.

- (b) Length of A75A connector cable wired to connecting blocks.
- (c) Connecting blocks furnished with aluminum pressure-sensitive tapes, preprinted with lead designations.

1.03 Fig. 1 shows the method of counting 66B1-25 connecting blocks.

1.04 The aluminum tape applied to the connecting blocks is one continuous strip. When terminating the first wire, hold wire taut and snap into slot on the fanning strip to break through tape.

1.05 The coding and feature make-up of these key service units is covered in C Section entitled 300-Type Key Service Units, Identification.

1.06 These key service units are designed for wall or floor mounting, equipped with or without power. Methods for mounting the 177A backboard or ED-69462-01 cabinet assembly associated with these packages is covered in C Section

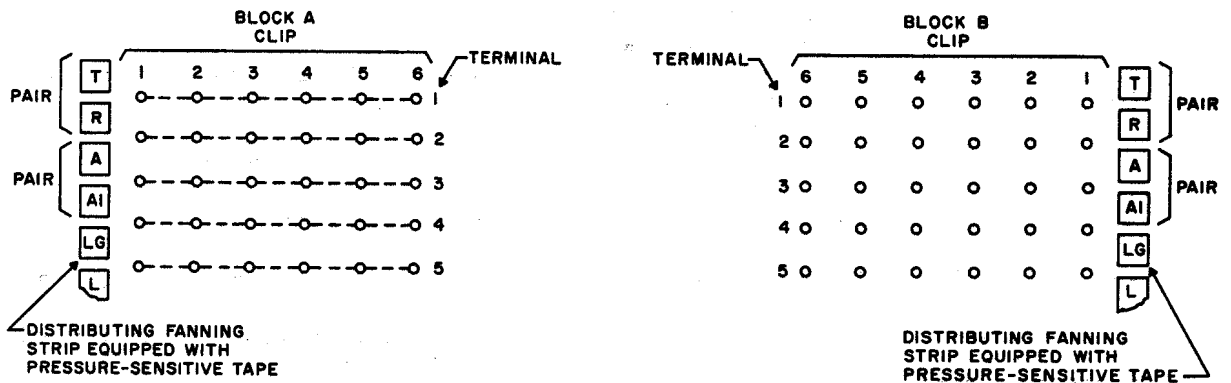


Fig. 1 - Method of Counting 66B1-25 Connecting Blocks

entitled Equipment Cabinets and Apparatus Mountings, Installation.

1.07 Index to Figures and Tables

- Fig. 1 - Method of Counting 66B1-25 Connecting Blocks
- Fig. 2 - Key or Running Cable Termination on 66B1-25 Connecting Block
- Fig. 3 - Connections for Manual Signaling When Dial Intercommunicating Circuit Is Not Used
- Fig. 4 - Suggested Intercommunicating Signal Connections Using 564HDR or 565HDR Telephone Sets
- Fig. 5 - 202D, 230B, 232B, and 207C Key Telephone Units, Connections and Strappings
- Fig. 6 - 202D, 230B, and 232B Key Telephone Units, Schematic Drawing
- Fig. 7 - 207C Key Telephone Unit, Schematic Drawing
- Table A - 301- and 302-Type Key Service Units, Connections Between Apparatus and 66B1-25 Connecting Blocks
- Table B - 301- and 302-Type Key Service Units, Connections Between Block A of 66B1-25 Connecting Block, Apparatus, and Power Plant
- Table C - 302-Type Key Service Unit, Connections Between A75A Connector Cable and 66-Type Connecting Blocks
- Table D - Procedure for Disconnecting Leads in 565HDR Telephone Sets

2.00 CONNECTIONS

2.01 Key and power cable connections and strappings between 202D, 230B,

232B, and 207C key telephone units are shown in Fig. 5.

300-TYPE KEY SERVICE UNITS

- 2.02 The key telephone units in this package are interwired only.
- 2.03 Connect key or running cables directly to the screw terminals on back of the key telephone units. See Table A for features, lead designations, and connections.
- 2.04 Connect an external power source as shown in Table B when power is not provided as part of the package.

301-TYPE KEY SERVICE UNITS

- 2.05 Connect key or running cables on clips 1 through 5 of 66B1-25 connecting block (see Fig. 2). See Table A for features, lead designations, and terminal numbers on connecting blocks A and B.
- 2.06 Connect an external power source to clip 1 of connecting block A as shown in Table B when power is not provided as part of the package.

302-TYPE KEY SERVICE UNITS

2.07 An A75A connector cable is connected to 66B1-25 connecting block as follows:

- Blue binder (connector 1) to clip 1.
- Orange binder (connector 2) to clip 2.
- Green binder (connector 3) to clip 3.

Each connector provides for:

- All line features
- Dial intercommunicating line
- Common audible signal for all line circuits.

See Table C for features, lead designations, and connections to blocks A and B.

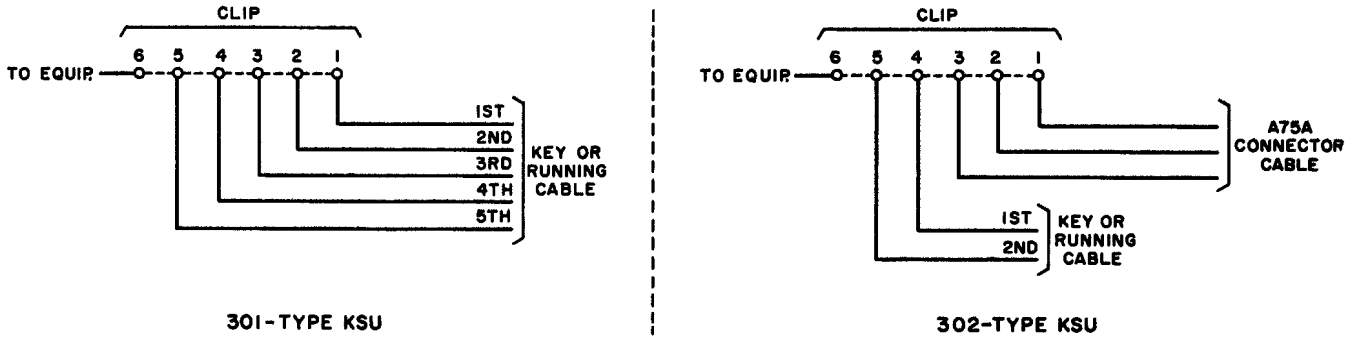
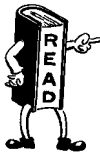


Fig. 2 - Key or Running Cable Termination on 66B1-25 Connecting Block

2.08 Some pairs in each binder group of the A75A connector cable are not terminated. These pairs may be used for dial intercommunicating codes and miscellaneous circuits by terminating on the proper or vacant terminal pairs on the 66B1-25 connecting block.



These vacant terminal pairs may have wires terminated on clip 6, that are lying dead at the apparatus end. Make sure that these terminals are clear of trouble before using for miscellaneous circuits.

2.09 A telephone set may be connected to each connector of the A75A connector cable or extended with a B25A connector cable to a bridging adapter or equivalent.

2.10 Fig. 4 shows possible arrangements for intercommunicating signal leads and for extending stations using a 3-way bridging adapter.

2.11 Connect additional key or running cables to clips 4 and 5 of 66B1-25 connecting blocks (see Fig. 2). See Table A for features, lead designations, and connections to terminal numbers on connecting blocks A and B.

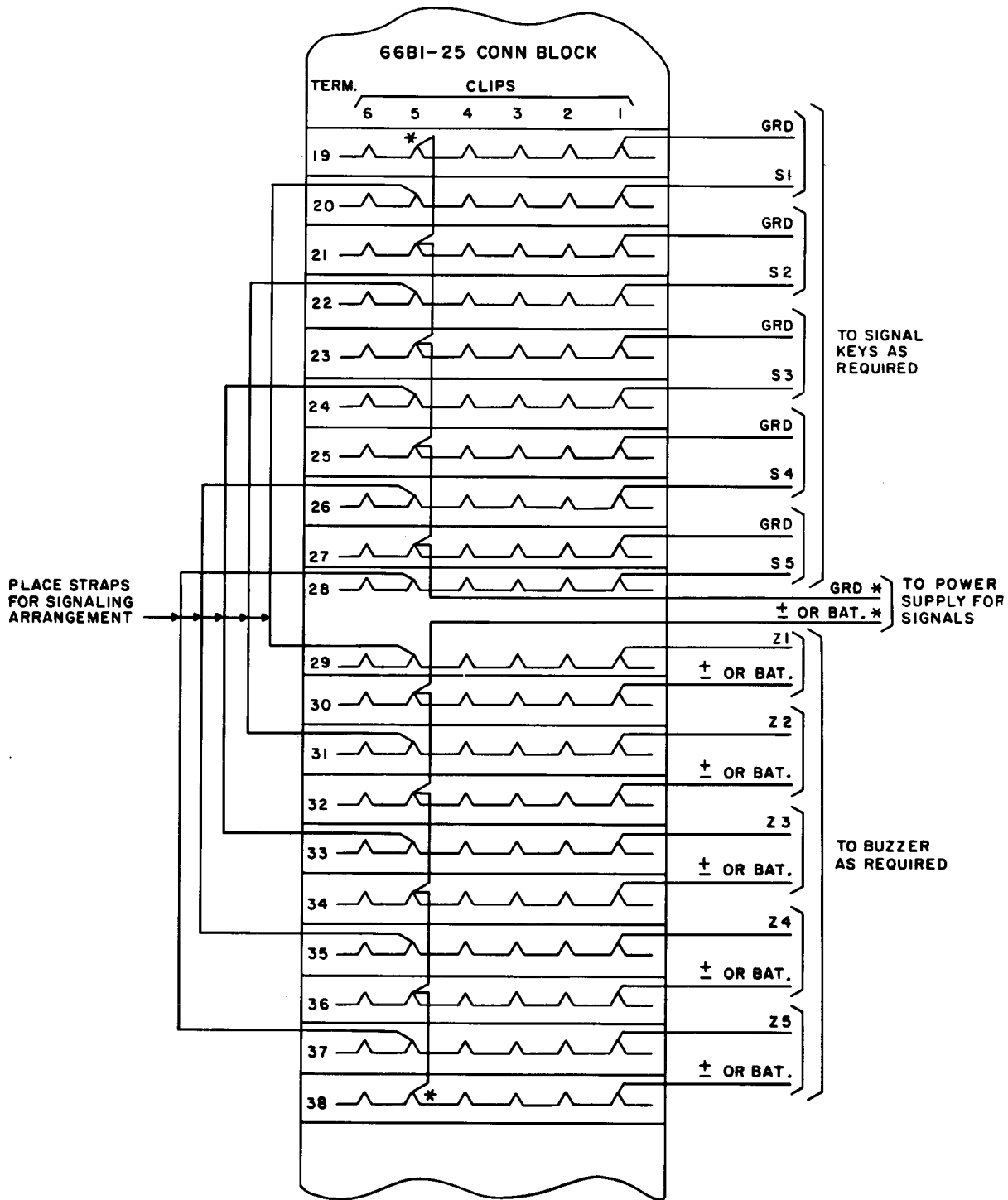
2.12 Connect an external power source to clip 1 of connecting block A (see Table B) when power is not provided as part of the package.

2.13 Exclusion and speakerphone leads of 565HDR telephone sets must be disconnected, taped, and stored when two or more 565HDR sets are connected in multiple through bridging adapters. This avoids interference with working circuits. Proceed as in Table D.

TABLE D
PROCEDURE FOR DISCONNECTING LEADS IN 565HDR TELEPHONE SETS

| Lead Desig | Cord Color | Remove From Term. |
|------------|------------|-------------------|
| R1 | G-V | R |
| T1 | V-G | RR |
| P4 | BR-V | ON1 |
| P3 | V-BR | ON |
| LK | S-V | L1* |
| AG | V-S | N |
| ER | BL-V | ER |
| ET | V-BL | ET |
| EB | O-V | EB |
| EH | V-O | EH |

* Terminal on network



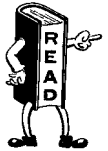
Note: Clip 6 is used for internal wiring which will be spare on equipment end when dial intercommunicating is not provided.

* Looped connections on clip.

Fig.3 - Connections for Manual Signaling When Dial Intercommunicating Circuit Is Not Used

SIGNALING CIRCUIT FOR MANUAL INTERCOMMUNICATING

2.14 Fig. 3 shows an arrangement for manual signaling when dial intercommunicating is not provided. This arrangement utilizes the terminals normally used for dial intercommunicating.



These terminals have wires, terminated on clip 6, that are lying dead at the apparatus end. Make sure that these terminals are clear of trouble before using for manual signaling.

WINK HOLD CIRCUIT

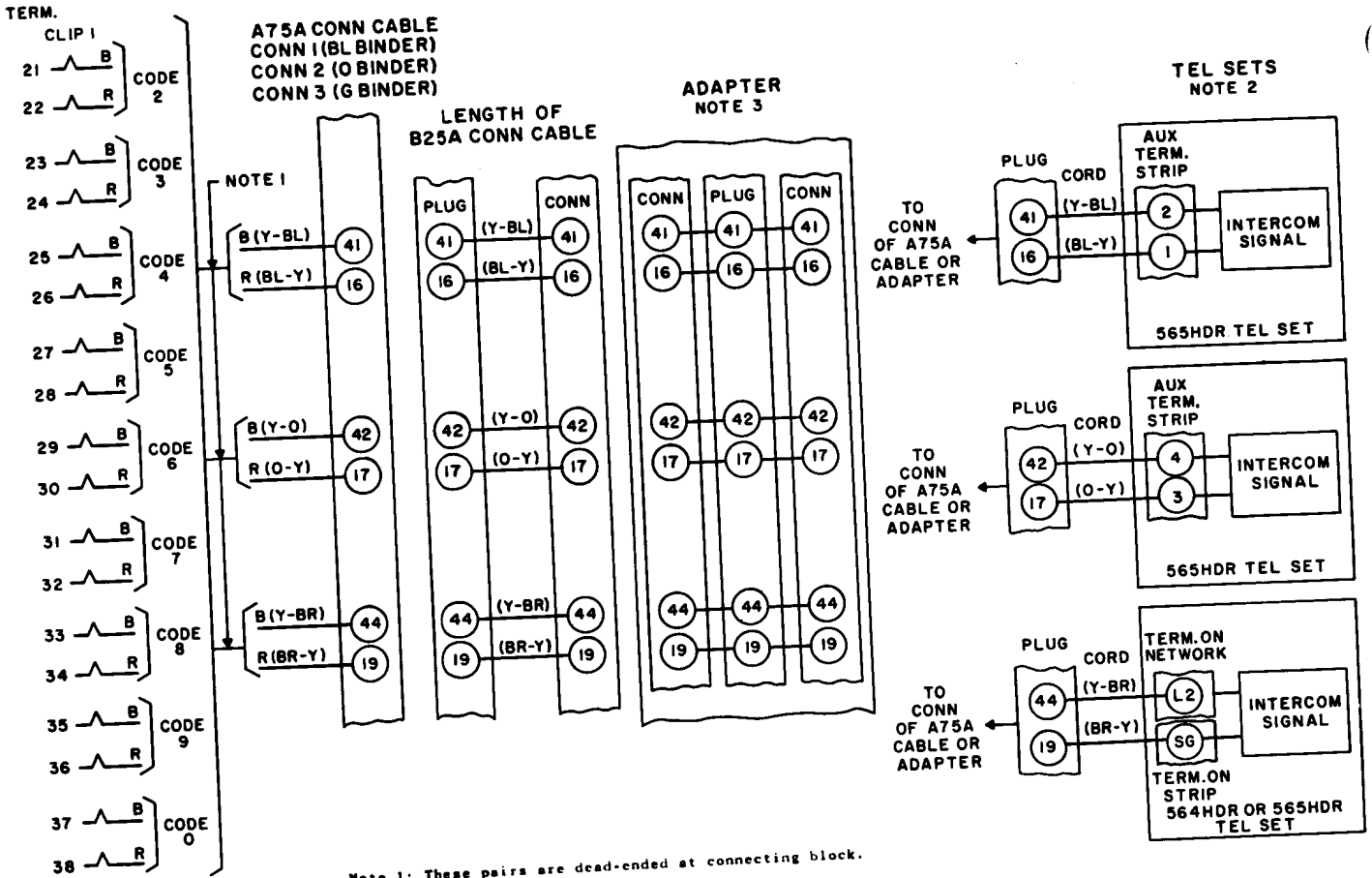
2.15 All packages are wired for wink hold feature. Refer to Note 3, Fig. 7, when the steady hold feature is to be provided.

3.00 MAINTENANCE

3.01 Circuit drawings (Fig. 6 and 7) are included as aids for clearing troubles and for changes in wiring options as furnished with the package.

3.02 For additional maintenance information, refer to C section covering the key telephone units involved.

66BI-25 CONN BLK
BLOCK B



Note 1: These pairs are dead-ended at connecting block. Connect as required.

Note 2: Only one 564HDR telephone set can be provided per connector of A75A connector cable. When two or more 565HDR telephone sets are multiplexed through adapters, the exclusion and speakerphone leads inside the telephone sets must be disconnected, taped, and stored. See Table D.

Note 3: Adapters may be multiplexed, as shown, to provide more than two intercommunicating codes per connector of the A75A connector cable.

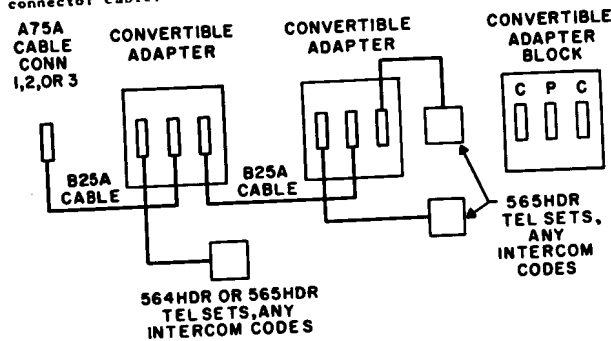


Fig. 4 - Suggested Intercommunicating Signal Connections Using 564HDR or 565HDR Telephone Sets

TABLE A
301- AND 302-TYPE KSU
CONNECTIONS BETWEEN APPARATUS
AND 66B1-25 CONNECTING BLOCKS

| Feature | Lead Desig | Block A 66B1-25 Connecting Block | | | Terminal on 232B KTU | Terminal on 230B KTU | Terminal on 202D KTU | Terminal on 207C KTU |
|-------------------------|------------|--|--------------------------------------|----------------------------|----------------------------|----------------------------|----------------------------|----------------------------|
| | | Term. | Clip | Cable Color Blue Binder | | | | |
| Line 1 | T | 1 | 6 | W-BL | | 1A | | |
| | R | 2 | | BL-W | | 2A | | |
| | A | 3 | | W-O | | 3A | | |
| | A1 | 4 | | O-W | | 4A | | |
| Line 2 | LG | 5 | W-G | | 6A | | | |
| | L | 6 | G-W | | 5A | | | |
| | T | 7 | W-BR | | 1B | | | |
| | R | 8 | BR-W | | 2B | | | |
| Line 3 | A | 9 | W-S | | 3B | | | |
| | A1 | 10 | S-W | | 4B | | | |
| | LG | 11 | R-BL | | 6B | | | |
| | L | 12 | BL-R | | 5B | | | |
| Line 4 | T | 13 | R-O | | 1C | | | |
| | R | 14 | O-R | | 2C | | | |
| | A | 15 | R-G | | 3C | | | |
| | A1 | 16 | G-R | | 4C | | | |
| Line 5 | LG | 17 | R-BR | | 6C | | | |
| | L | 18 | BR-R | | 5C | | | |
| | T | 19 | R-S | | 1D | | | |
| | R | 20 | S-R | | 2D | | | |
| Line 6 | A | 21 | BK-BL | | 3D | | | |
| | A1 | 22 | BL-BK | | 4D | | | |
| | LG | 23 | BK-O | | 6D | | | |
| | L | 24 | O-BK | | 5D | | | |
| Line 7 | T | 25 | BK-G | | | 1 | | |
| | R | 26 | G-BK | | | 2 | | |
| | A | 27 | BK-BR | | | 3 | 1st | |
| | A1 | 28 | BR-BK | | | 4 | | |
| Line 8 | LG | 29 | BK-S | | | 6 | | |
| | L | 30 | S-BK | | | 5 | | |
| | T | 31 | Y-BL | | | 1 | 2nd | |
| | R | 32 | BL-Y | | | 2 | | |
| Line 9 | A | 33 | Y-O | | | 3 | | |
| | A1 | 34 | O-Y | | | 4 | | |
| | LG | 35 | Y-G | | | 6 | | |
| | L | 36 | G-Y | | | 5 | | |
| Motor Supply | GRD | 37 | See Table B for Power Connections | | | | | |
| | 10V† | 38 | | | | | | |
| Spare | | 39 | | | | | | |
| | | 40 | | | | | | |
| Lamp Supply | ± or BAT. | 41 | | | | | | |
| | ± or BAT. | 42 | | | | | | |
| Audible Signal Supply | GRD | 43 | | | | | | |
| | ± or BAT. | 44 | | | | | | |
| 20V DC Talk or "A" Bat. | GRD | 45 | | | | | | |
| | BAT. | 46 | | | | | | |
| 20V DC Sig or "B" Bat. | GRD | 47 | | | | | | |
| | BAT. | 48 | | | | | | |
| | GRD | 49 | | | | | | |
| | BAT. | 50 | | | | | | |

TABLE A (CONT)
301- AND 302-TYPE KSU
CONNECTIONS BETWEEN APPARATUS
AND 66B1-25 CONNECTING BLOCKS

| Feature | Lead Desig | Block B 66B1-25 Connecting Block | | | Terminal on 232B KTU | Terminal on 230B KTU | Terminal on 202D KTU | Terminal on 207C KTU |
|------------------------------|------------|--|-------|------------------------------|----------------------------|----------------------------|----------------------------|----------------------------|
| | | Term. | Clip | Cable Color Orange Binder | | | | |
| Manual Intercom Line | T | 1 | 6 | W-BL | 30 | | | |
| | R | 2 | | BL-W | 40 | | | |
| | LG | 3 | | W-O | † | | | |
| | L | 4 | | O-W | 28 | | | |
| Audible Signal * | Line 1 | B1 or BZ1 | 5 | W-G | | 25A | | |
| | | R1 or BZ | 6 | G-W | | 10A | | |
| | Line 2 | B1 or BZ1 | 7 | W-BR | | 25A | | |
| | | R1 or BZ | 8 | BR-W | | 10B | | |
| | Line 3 | B1 or BZ1 | 9 | W-S | | 27A | | |
| | | R1 or BZ | 10 | S-W | | 10C | | |
| | Line 4 | B1 or BZ1 | 11 | R-BL | | 27A | | |
| | | R1 or BZ | 12 | BL-R | | 10D | | |
| | Line 5 | B1 or BZ1 | 13 | R-O | | | 25 | 1st |
| | | R1 or BZ | 14 | O-R | | | 10 | |
| | Line 6 | B1 or BZ1 | 15 | R-G | | | 25 | 2nd |
| | | R1 or BZ | 16 | G-R | | | 10 | |
| Dial Selective Intercom Line | T | 17 | R-BR | | | | 1B | |
| | R | 18 | BR-R | | | | 2B | |
| | LG | 19 | R-S | | | | 32B | |
| | L | 20 | S-R | | | | 3B | |
| | B(2) | 21 | BK-BL | | | | 36B | |
| | R(2) | 22 | BL-BK | | | | 12A | |
| | B(3) | 23 | BK-O | | | | 36B | |
| | R(3) | 24 | O-BK | | | | 13A | |
| | B(4) | 25 | BK-G | | | | 37B | |
| | R(4) | 26 | G-BK | | | | 14A | |
| | B(5) | 27 | BK-BR | | | | 37B | |
| | R(5) | 28 | BR-BK | | | | 15A | |
| | B(6) | 29 | BK-S | | | | 38B | |
| | R(6) | 30 | S-BK | | | | 16A | |
| | B(7) | 31 | Y-BL | | | | 38B | |
| | R(7) | 32 | BL-Y | | | | 17A | |
| B(8) | 33 | Y-O | | | | 40B | | |
| R(8) | 34 | O-Y | | | | 18A | | |
| B(9) | 35 | Y-G | | | | 40B | | |
| R(9) | 36 | G-Y | | | | 19A | | |
| B(0) | 37 | Y-BR | | | | 31B | | |
| R(0) | 38 | BR-Y | | | | 20A | | |
| CO or PBX | Line 1 | T | 39 | Y-S | | 7A | | |
| | | R | 40 | S-Y | | 8A | | |
| | Line 2 | T | 41 | V-BL | | 7B | | |
| | | R | 42 | BL-V | | 8B | | |
| | Line 3 | T | 43 | V-O | | 7C | | |
| | | R | 44 | O-V | | 8C | | |
| Line 4 | T | 45 | V-G | | 7D | | | |
| | R | 46 | G-V | | 8D | | | |
| Line 5 | T | 47 | V-BR | | | 7 | 1st | |
| | R | 48 | BR-V | | | 8 | | |
| Line 6 | T | 49 | V-S | | | 7 | 2nd | |
| | R | 50 | S-V | | | 8 | | |

* On the 302 KSU the R1 leads and the B1 leads are factory-strapped.

† Connect to convenient lamp ground.

TABLE B
 301- AND 302-TYPE KSU
 CONNECTIONS BETWEEN BLOCK A
 OF 66B1-25 CONNECTING BLOCK, APPARATUS,
 AND POWER PLANT

| Feature | Lead Desig | Connecting Block A | | | | | | | | | | | | | | |
|-------------------------|----------------------|-----------------------------|------------------|--------|----------|------------------|----------|----------|------------------|--------|----------|------------------|----------|----------|------------------|------------------------|
| | | Term. on 66B1-25 Conn Block | Clip 6 | | Clip 5 | | Clip 4 | | Clip 3 | | Clip 1 | | | | | |
| | | | Cable Color Code | To KTU | To Term. | Cable Color Code | To KTU | To Term. | Cable Color Code | To KTU | To Term. | Cable Color Code | To KTU | To Term. | Cable Color Code | To J86731D Power Plant |
| Motor Supply | GRD 10V ± | 37 38 | Y-BR BR-Y | 232B | 27 26 | | | | | | | | | | 10V AC | G B |
| Spare | | | | | | | | | | | | | | | | |
| Lamp Supply | ± or BAT. | 41 | BR * | 232B | 9 | BR-W * | 1st 202D | 29 | | | | | | | 10V AC | B † |
| | ± or BAT. | 42 | S * | 232B | 10 | S-W * | | | | | | | | | | B † |
| | GRD | 43 | BL-W † | 230B | 6A | O-W † | 230B | 16A | G-W † | 207C | 32B | Y-W † | 1st 202D | 16 | | G |
| | ± or BAT. | 44 | BL † | 230B | 28A | O † | 230B | 29A | G † | 207C | 29B | Y † | | | | B † |
| Audible Signal Supply | GRD | 45 | V-G | 232B | 39 | | | | | | | | | | | |
| | ±, BAT. or 105V ± | 46 | G-V | | 29 | | | | | | | | | | | |
| 20V DC Talk or "A" BAT. | GRD | 47 | V-BR | 232B | 25 | | | | | | | | | | 20V DC Talk | G B |
| | BAT. | 48 | BR-V | | 24 | | | | | | | | | | | |
| 20V DC Sig or B BAT. | GRD | 49 | V-S | 230B | 4A | | | | | | | | | | 20V DC Sig | G B |
| | BAT. | 50 | S-V | | 26A | | | | | | | | | | | |

* 18 Gauge - Green Binder

† 20 Gauge - Green Binder

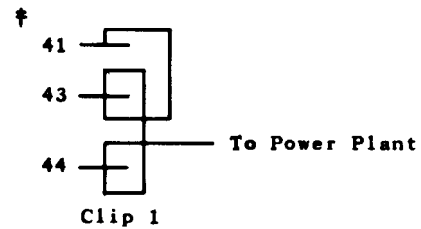


TABLE C
302-TYPE KSU
CONNECTIONS BETWEEN A75A
CONNECTOR CABLE AND 66-TYPE CONNECTING BLOCKS

| Conn 1 | | | | | | | Conn 2 | | | | | | | Conn 3 | | | | | | |
|----------------|------------|--------------------|-------------|-----------------------------------|-----|------|-----------|------------|----------------------|-------------|-----------------------------------|-----|-----------|---------|------------|---------------------|-------------|-----------------------------------|-----|------|
| Feature | Lead Desig | Conn 1 Blue Binder | | Termination on 66B1-25 Conn Block | | | Feature | Lead Desig | Conn 2 Orange Binder | | Termination on 66B1-25 Conn Block | | | Feature | Lead Desig | Conn 3 Green Binder | | Termination on 66B1-25 Conn Block | | |
| | | Pin No. | Cable Color | Term. | Rlk | Clip | | | Pin No. | Cable Color | Term. | Rlk | Clip | | | Pin No. | Cable Color | Term. | Rlk | Clip |
| Line 1 | T | 26 | W-BL | 1 | A | 1 | T | 26 | W-BL | 1 | A | 1 | T | 26 | W-BL | 1 | A | 1 | | |
| | R | 1 | BL-W | 2 | | | R | 1 | BL-W | 2 | | | R | 1 | BL-W | 2 | | | | |
| | A | 27 | W-O | 3 | | | A | 27 | W-O | 3 | | | A | 27 | W-O | 3 | | | | |
| Line 2 | A | 27 | O-W | 4 | A | 2 | A | 27 | O-W | 4 | A | 2 | A | 27 | O-W | 4 | A | 2 | | |
| | LG | 28 | W-G | 5 | | | LG | 28 | W-G | 5 | | | LG | 28 | W-G | 5 | | | | |
| | L | 3 | G-W | 6 | | | L | 3 | G-W | 6 | | | L | 3 | G-W | 6 | | | | |
| Line 3 | T | 29 | W-BR | 7 | A | 3 | T | 29 | W-BR | 7 | A | 3 | T | 29 | W-BR | 7 | A | 3 | | |
| | R | 4 | BR-W | 8 | | | R | 4 | BR-W | 8 | | | R | 4 | BR-W | 8 | | | | |
| | A | 30 | W-S | 9 | | | A | 30 | W-S | 9 | | | A | 30 | W-S | 9 | | | | |
| Line 4 | A | 30 | S-W | 10 | A | 4 | A | 30 | S-W | 10 | A | 4 | A | 30 | S-W | 10 | A | 4 | | |
| | LG | 31 | R-BL | 11 | | | LG | 31 | R-BL | 11 | | | LG | 31 | R-BL | 11 | | | | |
| | L | 6 | BL-R | 12 | | | L | 6 | BL-R | 12 | | | L | 6 | BL-R | 12 | | | | |
| Line 5 | T | 32 | R-O | 13 | A | 5 | T | 32 | R-O | 13 | A | 5 | T | 32 | R-O | 13 | A | 5 | | |
| | R | 7 | O-R | 14 | | | R | 7 | O-R | 14 | | | R | 7 | O-R | 14 | | | | |
| | A | 33 | R-G | 15 | | | A | 33 | R-G | 15 | | | A | 33 | R-G | 15 | | | | |
| Line 6 | A | 33 | G-R | 16 | A | 6 | A | 33 | G-R | 16 | A | 6 | A | 33 | G-R | 16 | A | 6 | | |
| | LG | 34 | R-BR | 17 | | | LG | 34 | R-BR | 17 | | | LG | 34 | R-BR | 17 | | | | |
| | L | 9 | BR-R | 18 | | | L | 9 | BR-R | 18 | | | L | 9 | BR-R | 18 | | | | |
| Line 7 | T | 35 | R-S | 19 | A | 7 | T | 35 | R-S | 19 | A | 7 | T | 35 | R-S | 19 | A | 7 | | |
| | R | 10 | S-R | 20 | | | R | 10 | S-R | 20 | | | R | 10 | S-R | 20 | | | | |
| | A | 36 | BK-BL | 21 | | | A | 36 | BK-BL | 21 | | | A | 36 | BK-BL | 21 | | | | |
| Line 8 | A | 36 | BL-BK | 22 | A | 8 | A | 36 | BL-BK | 22 | A | 8 | A | 36 | BL-BK | 22 | A | 8 | | |
| | LG | 37 | BK-O | 23 | | | LG | 37 | BK-O | 23 | | | LG | 37 | BK-O | 23 | | | | |
| | L | 12 | O-BK | 24 | | | L | 12 | O-BK | 24 | | | L | 12 | O-BK | 24 | | | | |
| Dial Inter-com | T | 38 | BK-G | 17 | A | 9 | T | 38 | BK-G | 17 | A | 9 | T | 38 | BK-G | 17 | A | 9 | | |
| | R | 13 | G-BK | 18 | | | R | 13 | G-BK | 18 | | | R | 13 | G-BK | 18 | | | | |
| Spare * | | 39 | BK-BR | | | | | 39 | BK-BR | | | | | 39 | BK-BR | | | | | |
| Dial Inter-com | LG | 40 | BK-S | 19 | A | 10 | LG | 40 | BK-S | 19 | A | 10 | LG | 40 | BK-S | 19 | A | 10 | | |
| | L | 15 | S-BK | 20 | | | L | 15 | S-BK | 20 | | | L | 15 | S-BK | 20 | | | | |
| Spare * | | 41 | Y-BL | | | | | 41 | Y-BL | | | | | 41 | Y-BL | | | | | |
| Spare * | | 42 | Y-O | | A | 11 | | 42 | Y-O | | A | 11 | | 42 | Y-O | | A | 11 | | |
| | | 43 | Y-G | | | | | 43 | Y-G | | | | | 43 | Y-G | | | | | |
| | | 44 | Y-BR | | | | | 44 | Y-BR | | | | | 44 | Y-BR | | | | | |
| | | 45 | Y-S | | | | | 45 | Y-S | | | | | 45 | Y-S | | | | | |
| Com Aud | R1 or BZ1 | 45 | Y-S | 5 | A | 12 | R1 or BZ1 | 45 | Y-S | 7 | A | 12 | R1 or BZ1 | 45 | Y-S | 9 | A | 12 | | |
| | R1 or BZ | 20 | S-Y | 6 | | | R1 or BZ | 20 | S-Y | 8 | | | R1 or BZ | 20 | S-Y | 10 | | | | |
| Spare * | | 46 | V-BL | | | | | 46 | V-BL | | | | | 46 | V-BL | | | | | |
| Spare * | | 47 | V-O | | A | 13 | | 47 | V-O | | A | 13 | | 47 | V-O | | A | 13 | | |
| | | 48 | V-G | | | | | 48 | V-G | | | | | 48 | V-G | | | | | |
| | | 49 | V-BR | | | | | 49 | V-BR | | | | | 49 | V-BR | | | | | |
| | | 50 | V-S | | | | | 50 | V-S | | | | | 50 | V-S | | | | | |
| | | 51 | S-V | | | | | 51 | S-V | | | | | 51 | S-V | | | | | |

* Dead-ended and stored at connecting blocks. Connect as required.

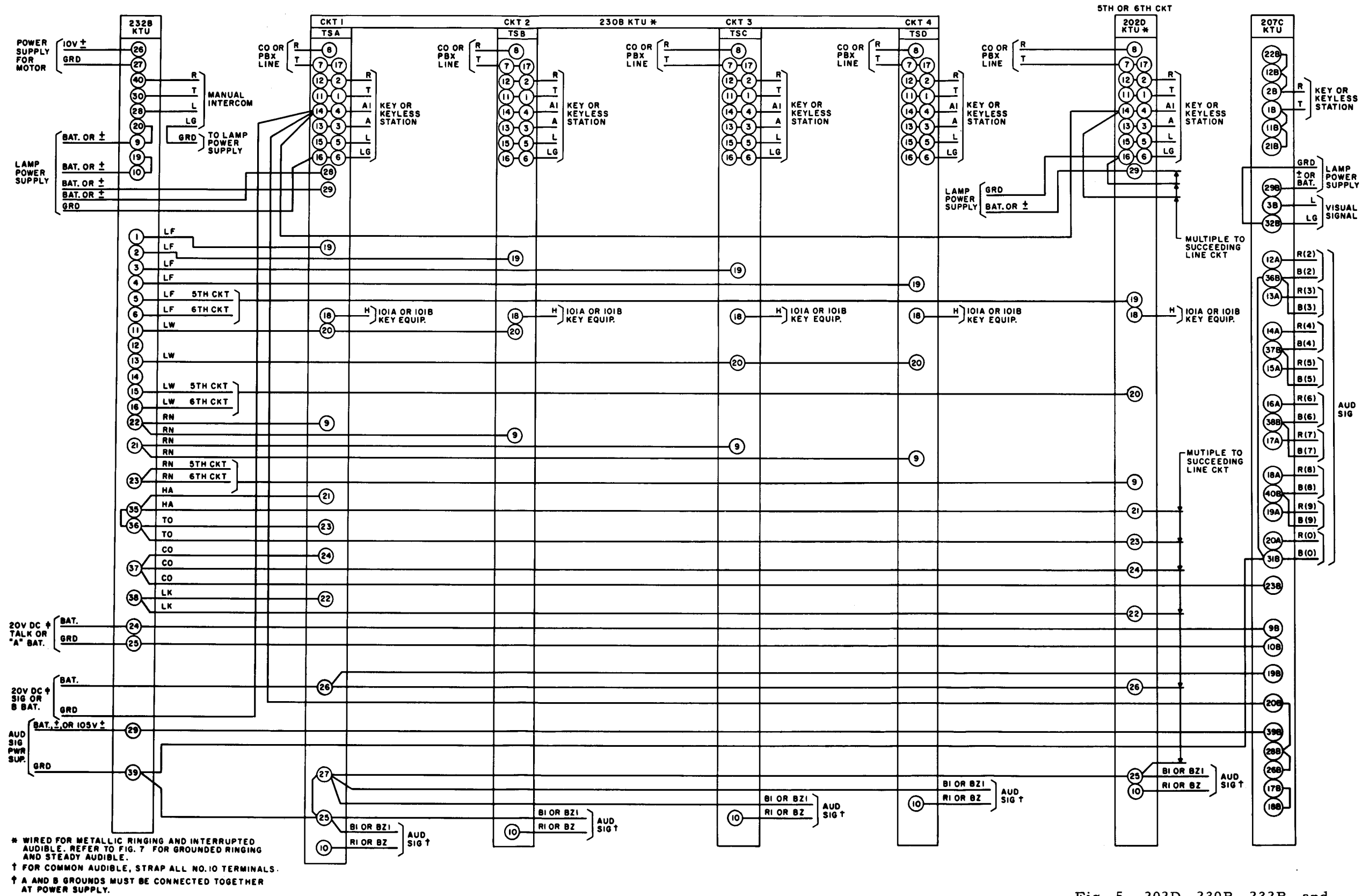
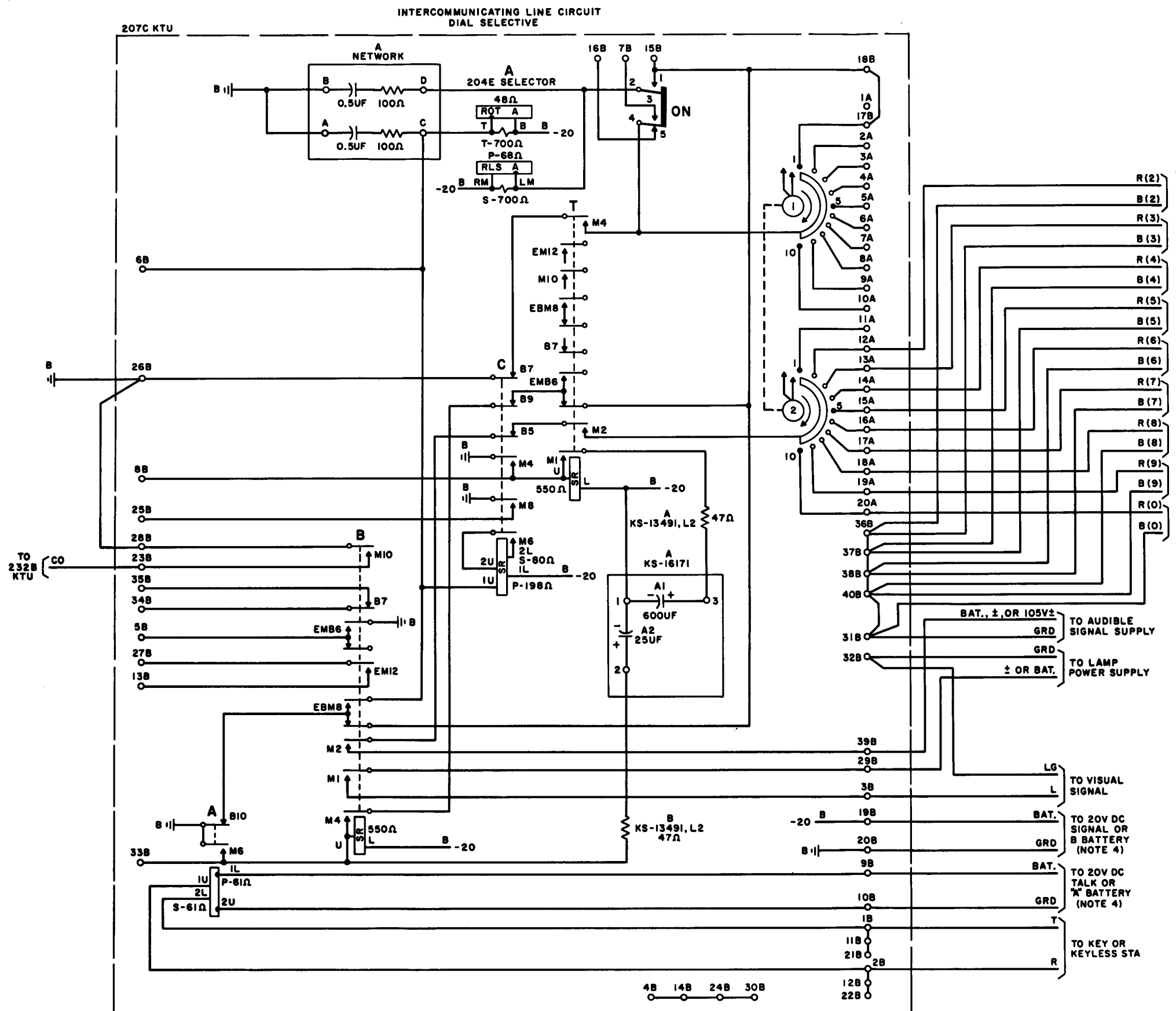


Fig. 5 - 202D, 230B, 232B, and 207C Key Telephone Units, Connections and Strappings



TO AUDIBLE SIGNAL

| WIRING | | OPTION |
|-------------------------------------|--------------------------|--------|
| METALLIC RINGING (FURNISHED) | | Z |
| GROUNDED RINGING | | Y |
| INTERRUPTED AUDIBLE SIG (FURNISHED) | | X |
| STEADY AUDIBLE SIGNAL | | W |
| LAMP SUPPLY | MAX 40 LAMPS (FURNISHED) | S |
| | MAX 80 LAMPS | R |

Note 1: For the 230B KTU, the following applies for punchings 1 through 20:
 Line 1 terminates on terminal strip A.
 Line 2 terminates on terminal strip B.
 Line 3 terminates on terminal strip C.
 Line 4 terminates on terminal strip D.
 Battery and ground terminated on terminal strip A and strapped internally.

Note 2: Maximum 20 lamps per L lead.

Note 3: When steady hold lamp is required instead of lamp wink, provide straps as follows:

- 202D KTU - Terminals 20 and 29
- 230B KTU, Circuits 1 and 2 - Terminals 20A, B and 29A
- Circuits 3 and 4 - Terminals 20C, D and 28A

Caution: If package interrupter is used to furnish lamp wink for other systems, disconnect and tape LW leads at terminal 20 of each line circuit not using the wink feature.

Note 4: A and B grounds must be connected together.

Fig. 7 - 207C Key Telephone Unit, Schematic Drawing