

CODE CALLING SYSTEMS

1A AND 1B

CONNECTIONS

1.00 GENERAL

1.01 This section was formerly Station Installation and Maintenance Section C65.811, Issue 4. Except for editorial changes and renumbering for inclusion in the Station Operations Manual, no other revisions have been made.

1.02 This section covers the connections for the 1A and 1B code calling systems, including their associated signals which are also used in conjunction with the 2A and 2B code calling systems covered in the PBX Installation and Maintenance Practices.

2.00 CONNECTIONS

2.01 The diagrams in this section show typical schematic circuits of the 1A and 1B code calling systems, arranged for operation from either ac or dc commercial power supply.

2.02 All telephone wire connections shall be made in accordance with the sections covering the termination of station wiring, and all connections to the power wiring shall be made in accordance with the National Electrical Code and any local regulations that may apply.

2.03 Table A is an index to the figures shown.

TABLE A

System	Code Sending Station	Power Supply	Figure Reference
1A	KS-8225	AC or DC	1(A), (B), (C) and 2
	KS-14468	AC	3 and 9
1B	KS-8225	AC	1(A) and (B); 4, 5, and 6
		DC	1(A), (B), and (C); 7 and 8
	KS-14468	AC	9 and 10

Note: When the KS-14468 code sender replaces the KS-8225 code sender in the 1A system, make wiring changes in the 3-wire receptacle to conform with Fig. 3.

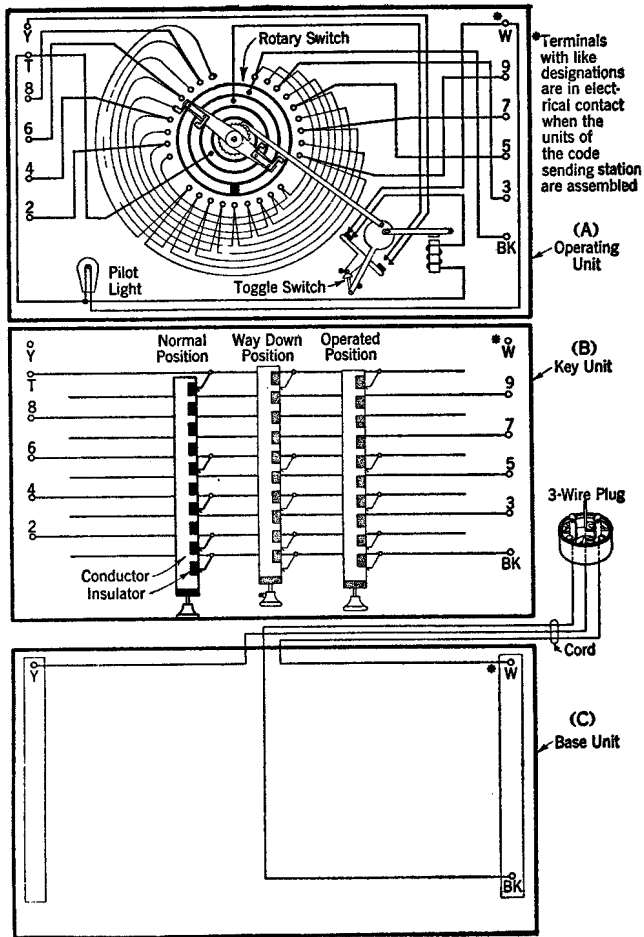
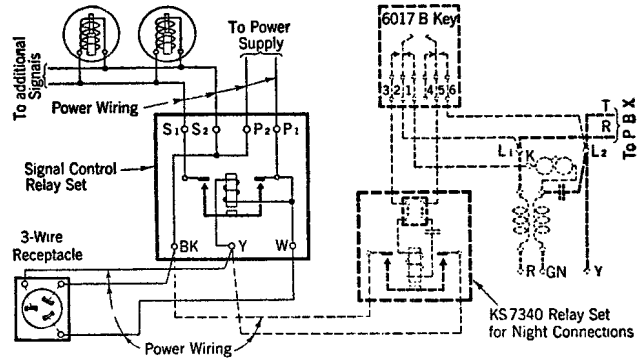


Fig. 1 - KS-8225 Code Sending Station



Note: Night connection circuit and equipment shown by dotted lines.

Fig. 2 - Signal and Night Connections Circuit for 1A System (AC or DC)

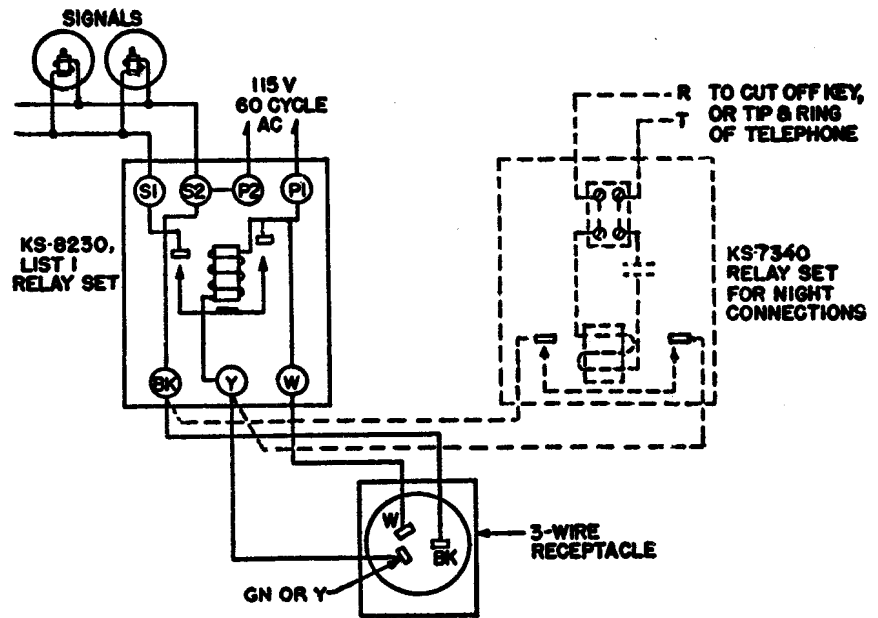


Fig. 3 - Signal and Night Connections Circuit for 1A System (AC)

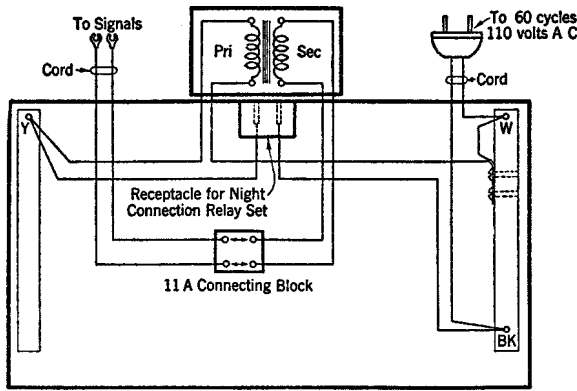


Fig. 4 - Base for KS-8225 Code Sending Station for 1B System (AC)

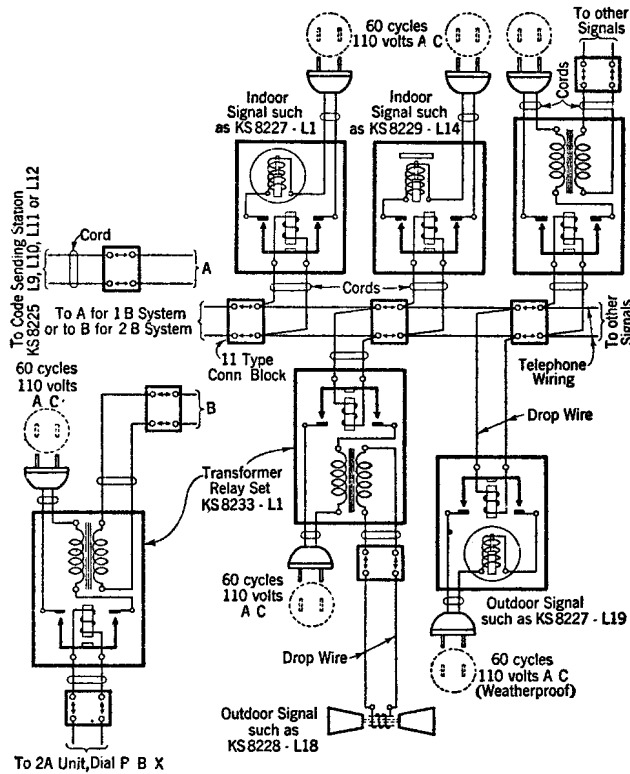


Fig. 5 - Signal Circuit for 1B System (AC)

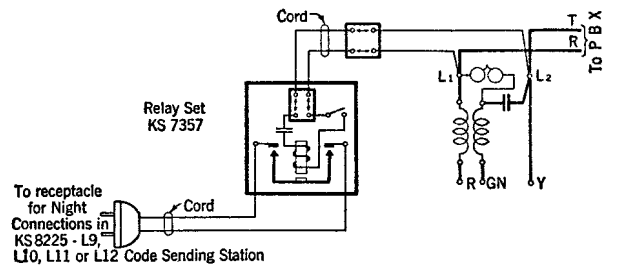


Fig. 6 - Night Connections for 1B System (AC)

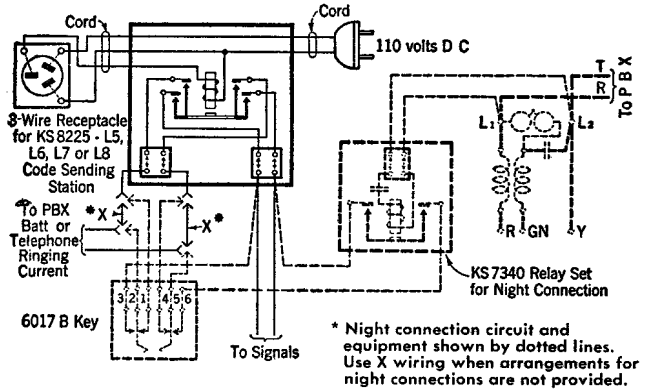


Fig. 7 - Night Connections and KS-8231 Relay Set for 1B System (DC)

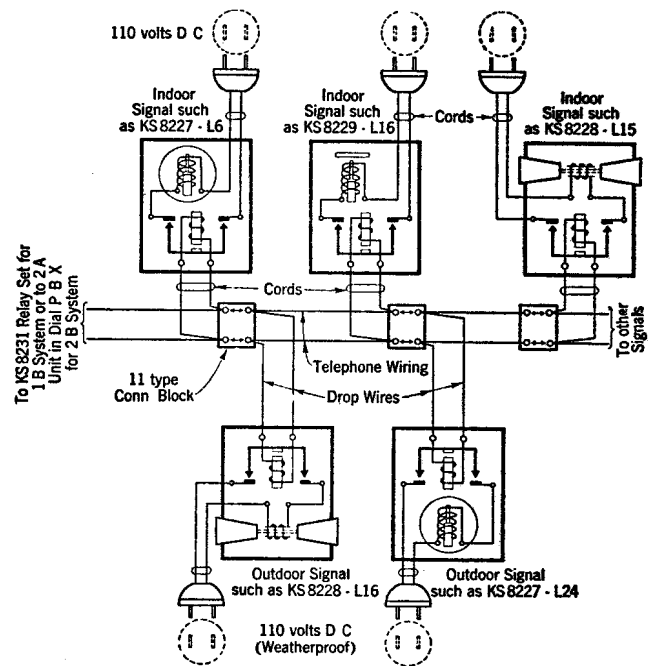


Fig. 8 - Signal Circuit for 1B System (DC)

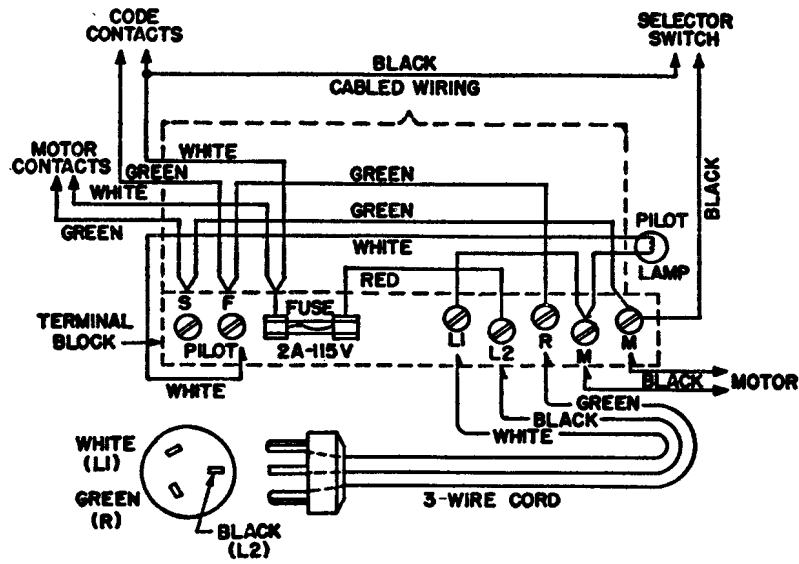


Fig. 9 — KS-14468 Code Calling Station

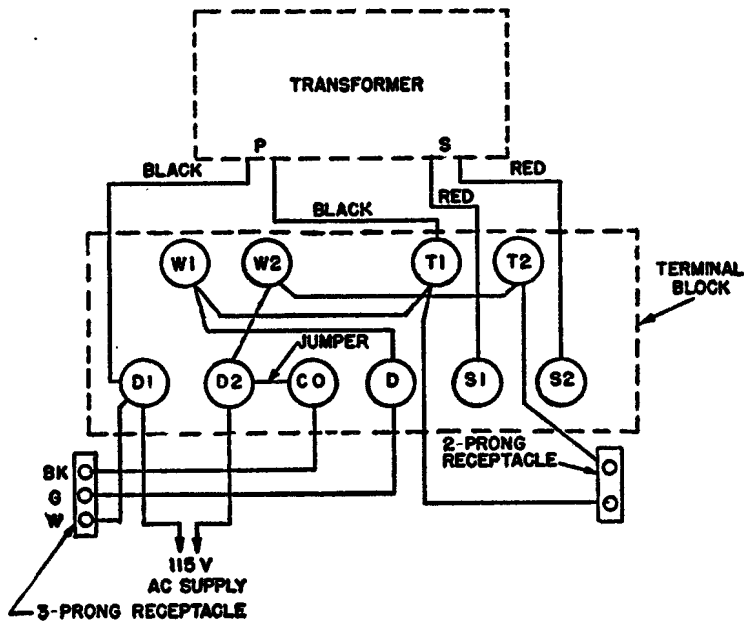


Fig. 10 — Transformer for KS-14468 Code Sending Station on 1B System (AC)