

BELL SYSTEM PRACTICES
Outside Plant Construction
and Maintenance

SECTION G61.115.1
Issue 1, March, 1955
AT&T Co Standard

BD TERMINALS
DESCRIPTION

Contents	Page
1. General	1
2. Description of BD Terminals	1
Sizes	1
Housing	2
Binding Post Chambers	2
Mounting Facilities	2
Wiring Facilities	3
Terminal Illustrations	5
3. Replacement Parts	9

1. GENERAL

1.01 This section covers descriptions of BD Cable Terminals designed for installation between aerial feeder and distribution cables and within runs of these aerial cables to provide flexibility through cross connection. Section G61.115 is replaced.

2. DESCRIPTION OF BD TERMINALS

2.01 **Sizes:** BD Terminals are available in five sizes as indicated in the following table which also gives approximate over-all dimensions and weights of the terminals. The code designations indicate the total number of cable pairs terminated in the terminals.

Terminal Code Designation	Height	Width Inches	Depth	Weight Lbs.
BD102	26-7/8	10-3/16	8-1/2	85
BD202	44-1/2	10-3/16	8-1/2	125
BD304	37-1/8	16-9/16	9-1/4	170
BD404	46	16-9/16	9-1/4	215
BD606	51	18-5/8	11	250

G61.115.1

Page 1

BD TERMINALS
DESCRIPTION

2.02 Housing: It consists of a back assembly, a top assembly that is common to both the chamber and the housing and two doors. The back assembly includes door hinges, two hangers for supporting the terminal on a detachable mounting bracket and a horizontal flange that forms the bottom of the housing. The doors form the sides and front of the housing and are locked in the closed position by means of two latches.

On terminals now being supplied the top hinges on the doors of the BD102 and the center hinges on the doors of the other BD Terminal sizes are provided with a notch in the stationary member and a stud in the sliding member. When the door is opened to a point where its front edge is in line with the back of the terminal, the stud drops into the notch and locks the door in the open position. To close the door, lift it about 1/8 inch so as to release the stud from the notch.

Two handles are attached to the top assembly of all housings, which serve as hoisting rings during installation of the terminal, besides serving as an aid to workmen when stepping from a pole to a pole seat or balcony.

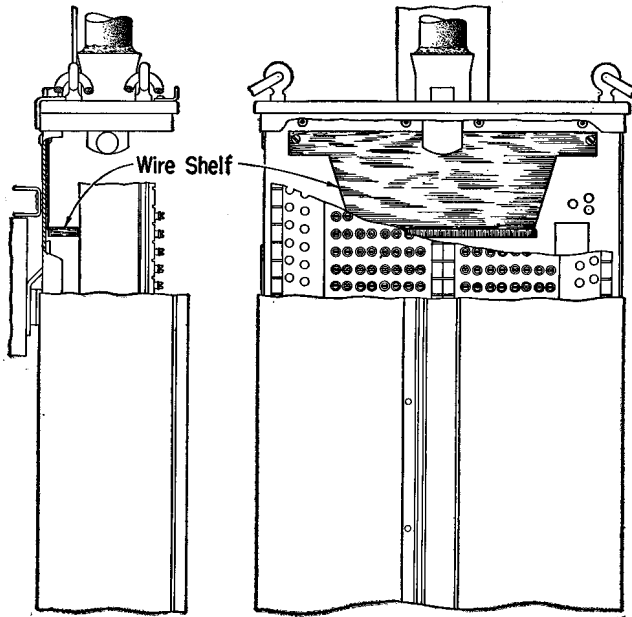
The housings for the BD102, BD202, BD304, and BD404 are of galvanized sheet steel. The sheet metal parts of the BD606 housing are of aluminum alloy except for the top assembly, hinges and latches which are of galvanized steel.

2.03 Binding Post Chambers: Each chamber is equipped with a 10 ft. stub cable which enters the top and terminates on binding posts mounted on a phenol fibre faceplate. The stub cable is coiled within a steel support to protect it from damage during transportation and handling of the terminal. Screw type binding posts are used to conserve faceplate area and to facilitate termination of cross-connecting and drop wires. The faceplate extends beyond the sides of the chamber and is provided with wiring holes. Wood numbering strips are mounted at the outer edges of the faceplate and in the case of the 304, 404 and 606 pair terminals, two additional strips are mounted at the center of the faceplate.

2.04 Mounting Facilities: The BD Terminals are equipped with upper and lower mounting brackets and two hangers. The upper bracket is detachable and consists of a short length of steel channel to which is riveted a cross member. This bracket is installed first and then the terminal is suspended from it by means of the two hangers that are secured to the back of the housing near the top. The lower bracket secures the bottom of the terminal to the mounting surface and is adjustable to permit proper alignment of the terminal.

2.05 **Wiring Facilities:** All the BD Terminals except the BD606 size now being supplied are equipped with a wiring shelf located at the top of the terminal housing behind the binding post chamber. It permits cross connections from the upper third of the feeder cable binding posts to be routed upward in order to avoid bulky wire runs around the bottom of the chamber.

**VIEW SHOWING POSITION OF WIRE SHELF
AT TOP OF BD TERMINALS
IN THE 404 PAIR AND SMALLER SIZES**



G61.115.1

Page 3

**BD TERMINALS
DESCRIPTION**

The BD606 Terminal is equipped with three wiring shelves behind the chamber to facilitate running cross connections around the back of the chamber in addition to the wiring run around the bottom of the chamber.

The older terminals found in the plant are equipped with M Bridle Rings or fibre tube assemblies in place of wiring shelves. In such terminals the cross-connecting wires are generally routed around the bottom of the chamber. Where bulkiness of such wire runs makes it difficult to close the terminal doors, a wiring shelf may be utilized to relieve the congestion. The shelf is mounted at the top of the terminal behind the binding post chamber by means of two 10-24 x 3/8-in. screws (P-210649) inserted in the tapped holes in the back of the housing occupied by the M Bridle Rings or fibre tube assemblies. The piece part numbers of the shelves available for this purpose are as follows:

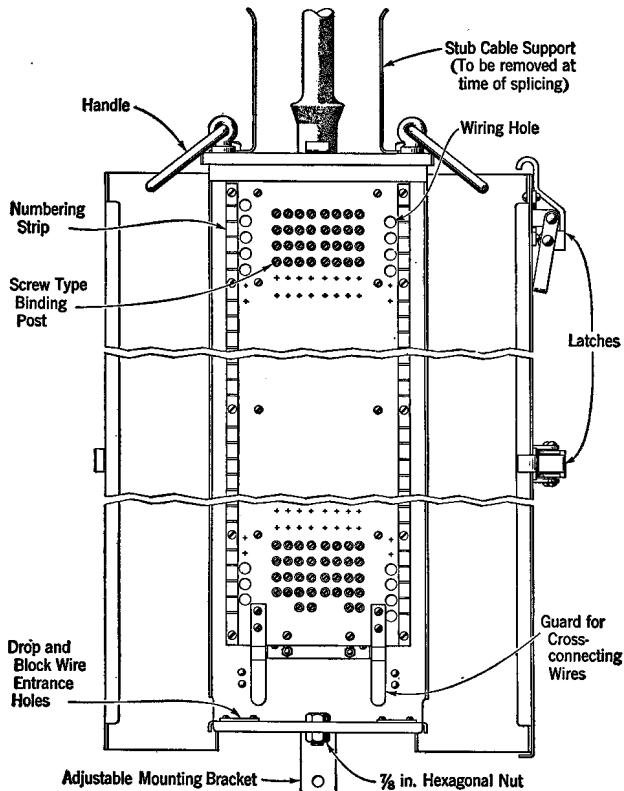
<u>Piece Part</u>	<u>Application</u>
P-16A589 Shelf	BD102 and BD202
P-16A590 Shelf	BD304 and BD404

Drop wires enter BD Terminals through holes provided in each lower corner of the housings.

2.06 **Terminal Illustrations:** The principal features of the BD Cable Terminals are indicated in the following illustrations:

(a) **Front Views**

BD102 AND BD202 CABLE TERMINALS

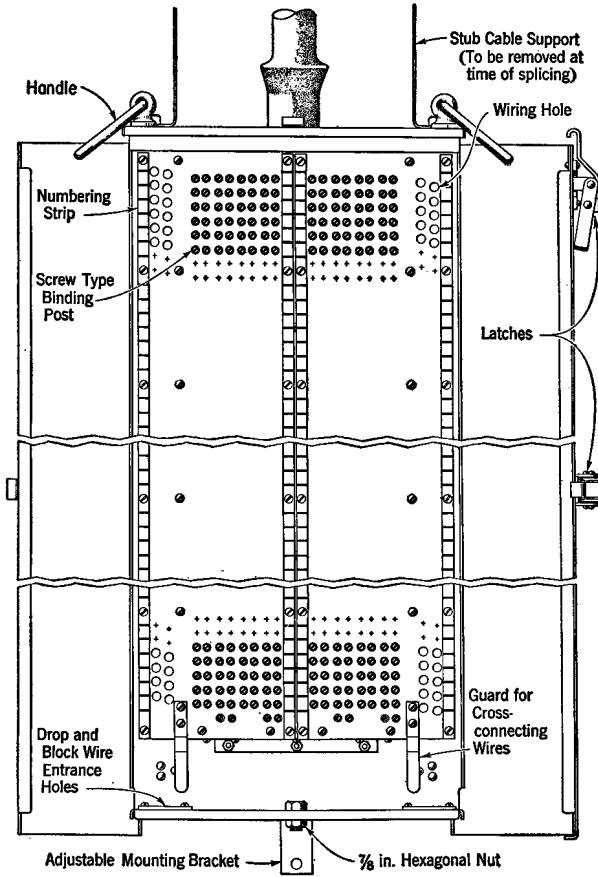


G61.115.1

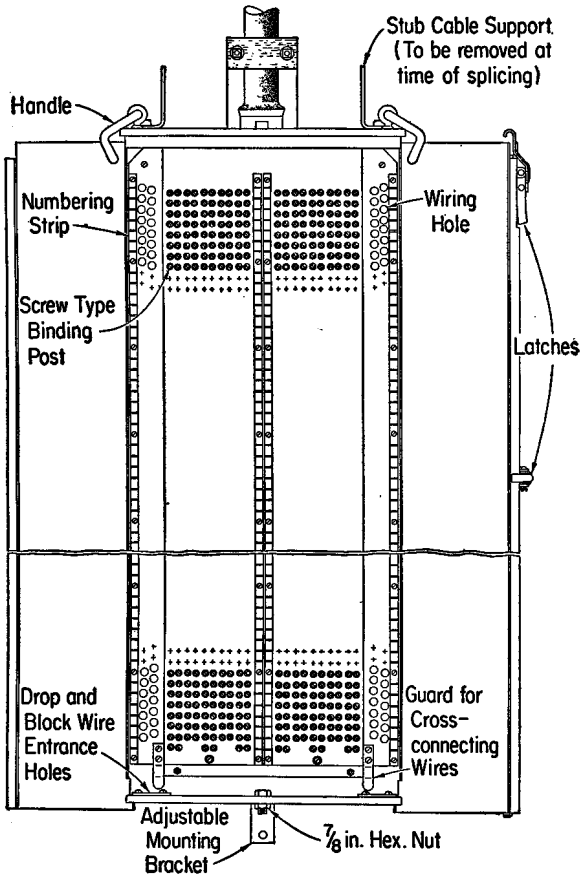
Page 5

**BD TERMINALS
DESCRIPTION**

BD304 AND BD404 CABLE TERMINALS



BD 606 CABLE TERMINAL



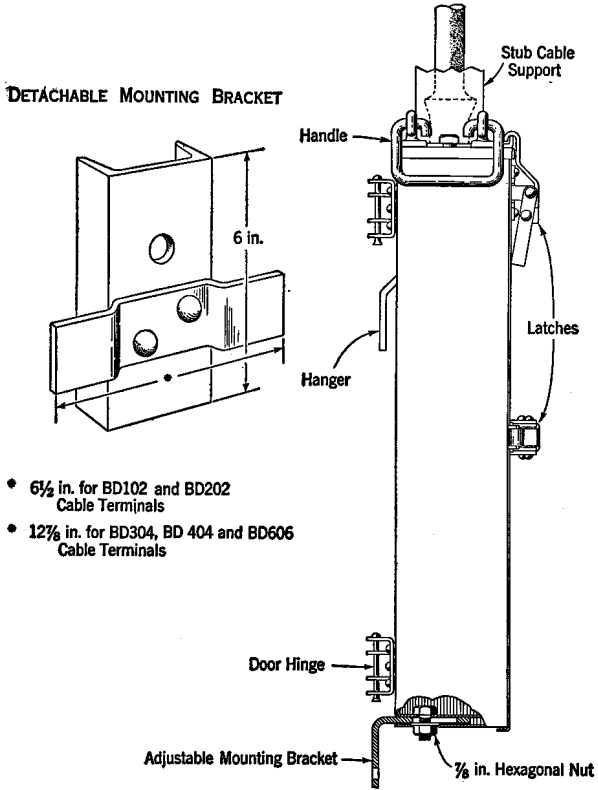
G61.115.1

Page 7

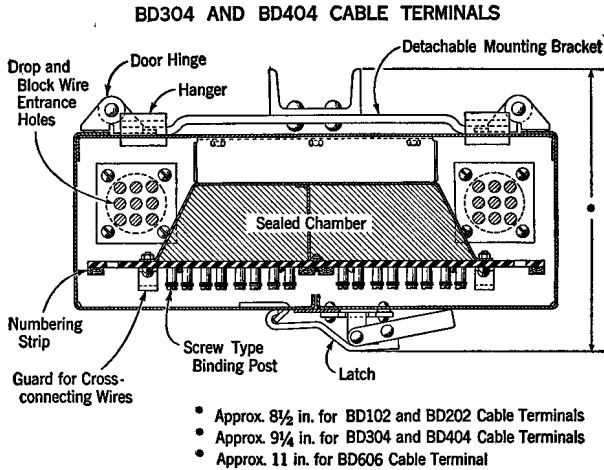
**BD TERMINALS
DESCRIPTION**

(b) Side View

BD TYPE CABLE TERMINAL



(c) **Cross-Sectional View**



3. REPLACEMENT PARTS

3.01 Parts of the BD Terminals available for field replacement or modification are listed below.

<u>Item</u>	<u>Piece Part No.</u>
Latch (Upper or lower)	P464551
Latch Handle (Upper)	P12A714
Latch Handle (Lower)	P464553
Rivet (For latch and handle assembly)	P210891
Shelf (For BD102 and 202)	P16A589
Shelf (For BD304 and 404)	P16A590

G61.115.1

Page 9
9 Pages

**BD TERMINALS
DESCRIPTION**